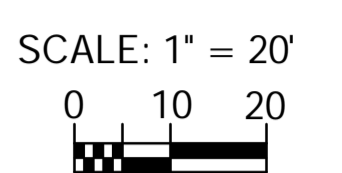
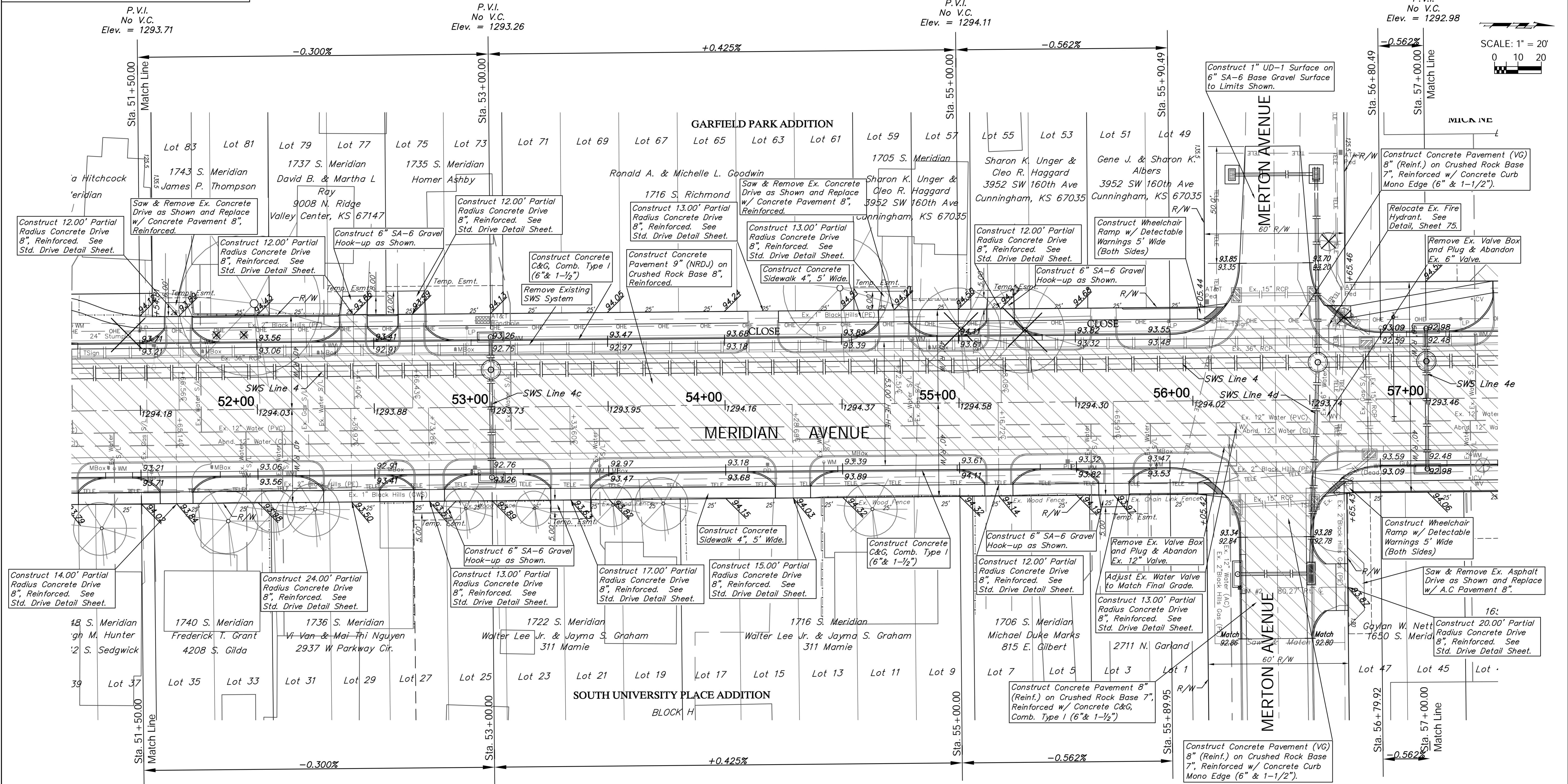


BENCHMARKS:
 BM #1 - Chiseled "b" on the Top of Curb on the South Side of Esthner Avenue, 80'± East of Centerline of Meridian. Elev. = 1292.64 (NAVD 88)
 BM #2 - Chiseled "b" on the Top of Curb on the South Side of Merton Avenue, 80'± East of Centerline of Meridian. Elev. = 1293.40 (NAVD 88)

REGION NO.	STATE	PROJECT NO.	FISCAL YEAR	SHEET NO.	TOTAL SHEETS
7	KANSAS	087-N-0593-01	2015	21	153



P.V.I. No V.C. Elev. = 1293.71

P.V.I. No V.C. Elev. = 1293.26

P.V.I. No V.C. Elev. = 1294.11

P.V.I. No V.C. Elev. = 1292.98

PROTECTION CURB				
STA. TO STA. (BASELINE)	ROADWAY	SIDE	HEIGHT	LENGTH (ft.)
51+72.6 - 52+35.4	Meridian	Lt.	6"	62.8
52+47.4 - 52+60.4	Meridian	Lt.	6"	13.0
55+70.0 - 56+02.3	Meridian	Lt.	6"	32.3
55+72.4 - 56+01.8	Meridian	Rt.	6"	29.4

Note:
Trees/Shrubs to be removed are marked thus:

Areas of Full Pavement Removal & Replacement are Indicated By:

Drawing File: E:\Projects\Meridian - Orient to McCormick\Civil 3d\Meridian Base.dwg (Pav 08)
 Project No. 1004-E493 CAPITAL IMPROVEMENT PROJECT
 Design: TPV
 Drawn: STAFF
 Approved: TPV
 Scale: NOTED
MERIDIAN AVENUE PAVING
 Sta. 51 + 50.00 to Sta. 57 + 00.00
 MERIDIAN AVENUE - PAVINE AVENUE TO MCCORMICK AVENUE

Baughman Company, P.A.
 315 Ellis St., Wichita, KS 67211 P 316.262.7271 F 316.262.0149
 ENGINEERING | SURVEYING | PLANNING | LANDSCAPE ARCHITECTURE