

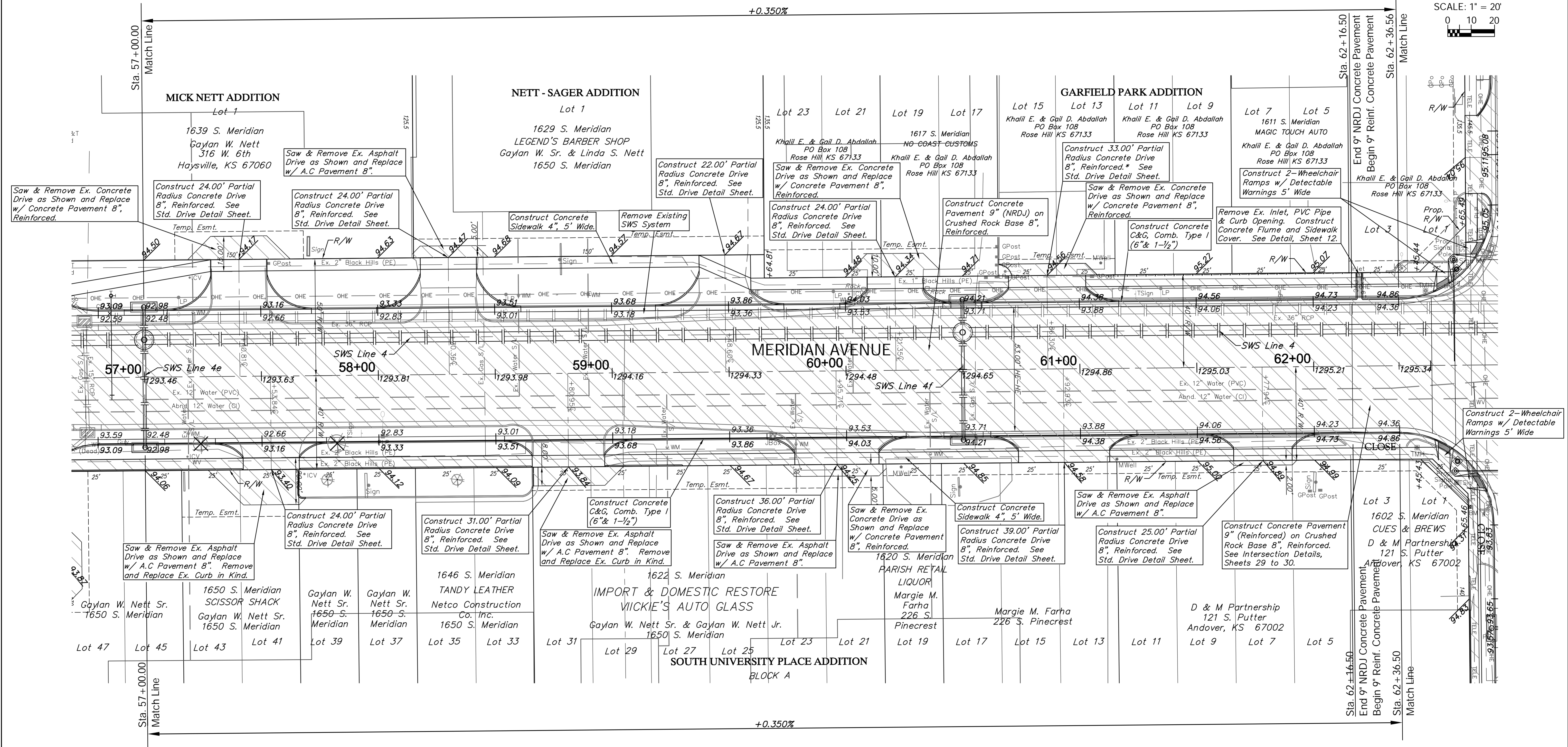
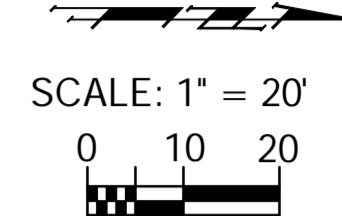
BENCHMARKS:
 BM #2 - Chiseled "a" on the Top of Curb on the South Side of Merton Avenue, 80'± East of Centerline of Meridian. Elev. = 1293.40 (NAVD 88)
 BM #3 - City of Wichita Benchmark Disc in the Southeast Corner of the Intersection of Meridian and Harry, 29.5' South and 61' East of the Centerline of Both. Elev. = 1294.17 (NAVD 88)

The Contractor Shall Remove the Landscaping Boulders at 1617 S. Meridian and Stockpile on Private Property. Cost for this work shall be SUBSIDIARY to the Lump Sum Bid Item "Site Clearing".

* The proposed drive for 1611 S. Meridian at Sta. 60+86.30 shall have a 15' radius on the south side of the drive and a 20' radius on the north side of the drive.

REGION NO.	STATE	PROJECT NO.	FISCAL YEAR	SHEET NO.	TOTAL SHEETS
7	KANSAS	087 N-0593-01	2015	22	153

P.V.I.
No V.C.
Elev. = 1292.98



P.V.I.
No V.C.
Elev. = 1292.98

PROTECTION CURB				
STA. TO STA. (BASELINE)	ROADWAY	SIDE	HEIGHT	LENGTH (ft.)
56+68.1 - 57+41.8	Meridian	Rt.	6"	73.7
57+65.8 - 58+65.4	Meridian	Rt.	8"	99.6
58+96.4 - 59+30.0	Meridian	Rt.	6"	33.6

Note:
Areas of Full Pavement Removal & Replacement are Indicated By:
 Trees/Shrubs to be removed are marked thus:

Design: TPV
 Drawn: STAFF
 Approved: TPV
 Scale: NOTED

Project No. 1004 E493 CAPITAL IMPROVEMENT PROJECT
 MERIDIAN AVENUE PAVING
 Sta. 57 + 50.00 to Sta. 62 + 36.56
 MERIDIAN AVENUE - PAVINE AVENUE TO MCCORMICK AVENUE