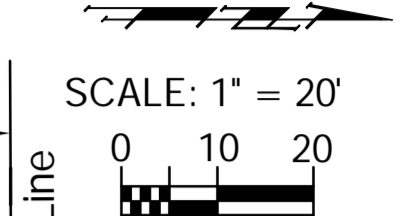
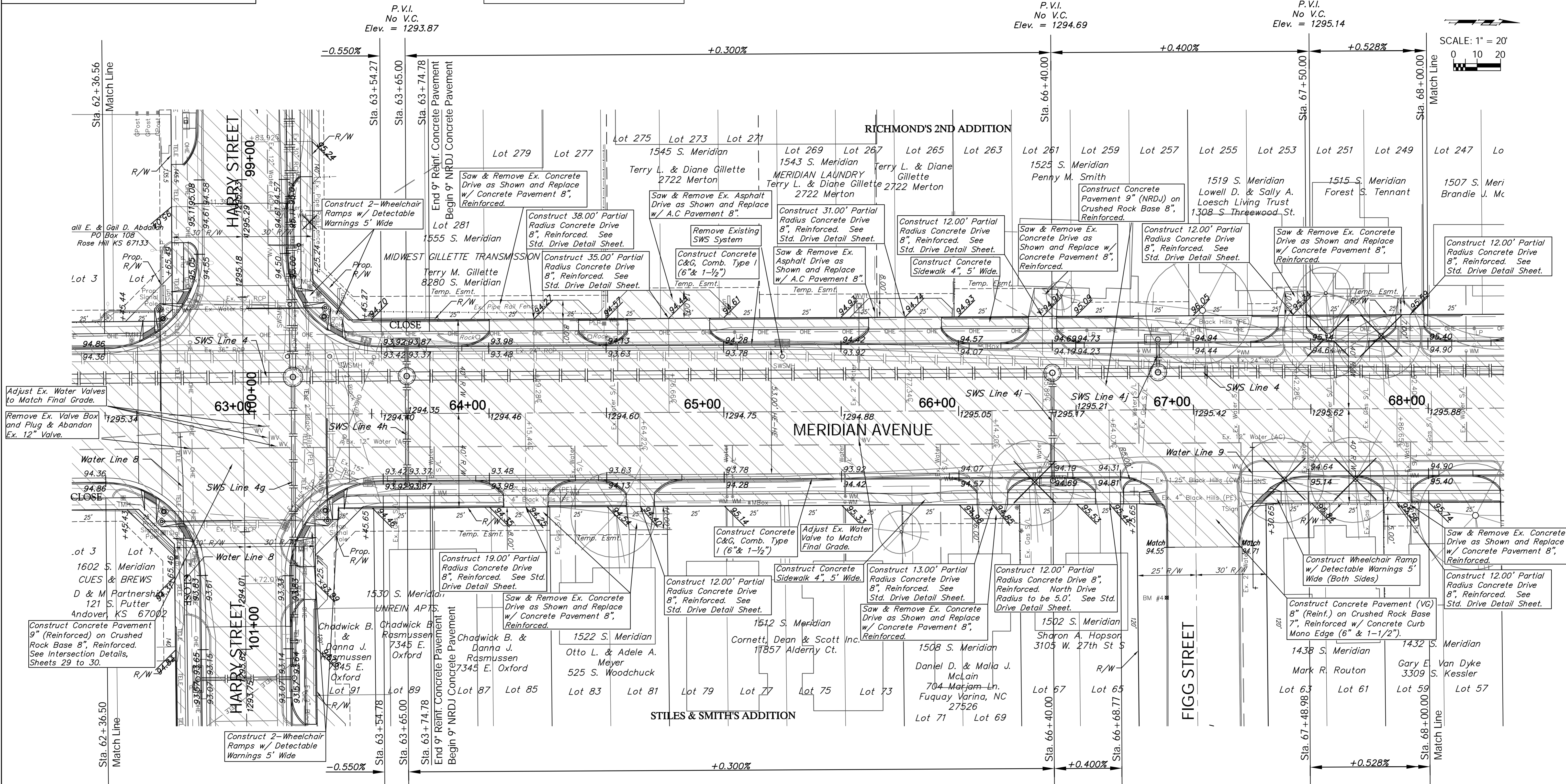


BENCHMARKS:
 BM #3 - City of Wichita Benchmark Disc in the Southeast Corner of the Intersection of Meridian and Harry, 29.5' South and 61' East of the Centerline of Both.
 Elev. = 1294.17 (NAVD 88)
 BM #4 - Chiseled "b" on the Top of Curb on the South Side of Figg Street, 80± East of Centerline of Meridian.
 Elev. = 1295.08 (NAVD 88)

The Contractor Shall Remove the Landscaping Boulders at 1555 S. Meridian and Stockpile on Private Property. Cost for this work shall be **SUBSIDIARY** to the Lump Sum Bid Item "Site Clearing".

REGION NO.	STATE	PROJECT NO.	FISCAL YEAR	SHEET NO.	TOTAL SHEETS
7	KANSAS	087 N-0593-01	2015	23	153



PROTECTION CURB				
STA. TO STA. (BASELINE)	ROADWAY	SIDE	HEIGHT	LENGTH (ft.)
63+45.7 - 64+05.9	Meridian	Rt.	6"	60.2
63+50.0 - 64+00.3	Meridian	Lt.	6"	50.3
64+24.9 - 64+58.2	Meridian	Rt.	6"	33.3
64+38.3 - 64+59.2	Meridian	Lt.	6"	20.9

P.V.I. No V.C. Elev. = 1293.87

PROTECTION CURB				
STA. TO STA. (BASELINE)	ROADWAY	SIDE	HEIGHT	LENGTH (ft.)
64+94.2 - 65+61.8	Meridian	Lt.	6"	67.6
65+92.8 - 66+29.9	Meridian	Lt.	6"	37.1
66+41.9 - 66+75.0	Meridian	Lt.	6"	33.1
67+25.0 - 67+36.3	Meridian	Lt.	6"	11.3
67+48.3 - 68+86.4	Meridian	Lt.	6"	38.1

P.V.I. No V.C. Elev. = 1294.69

P.V.I. No V.C. Elev. = 1295.14

Note:
 Areas of Full Pavement Removal & Replacement are Indicated By:
 Trees/Shrubs to be removed are marked thus:

Drawing File: E:\Projects\Meridian - Orient to McCormick\Civil 3d\Meridian Base.dwg (Pav 10)
 Project No. 1004 E493 CAPITAL IMPROVEMENT PROJECT
MERIDIAN AVENUE PAVING
 Sta. 62 + 36.56 to Sta. 68 + 00.00
 MERIDIAN AVENUE - PAVINE AVENUE TO MCCORMICK AVENUE