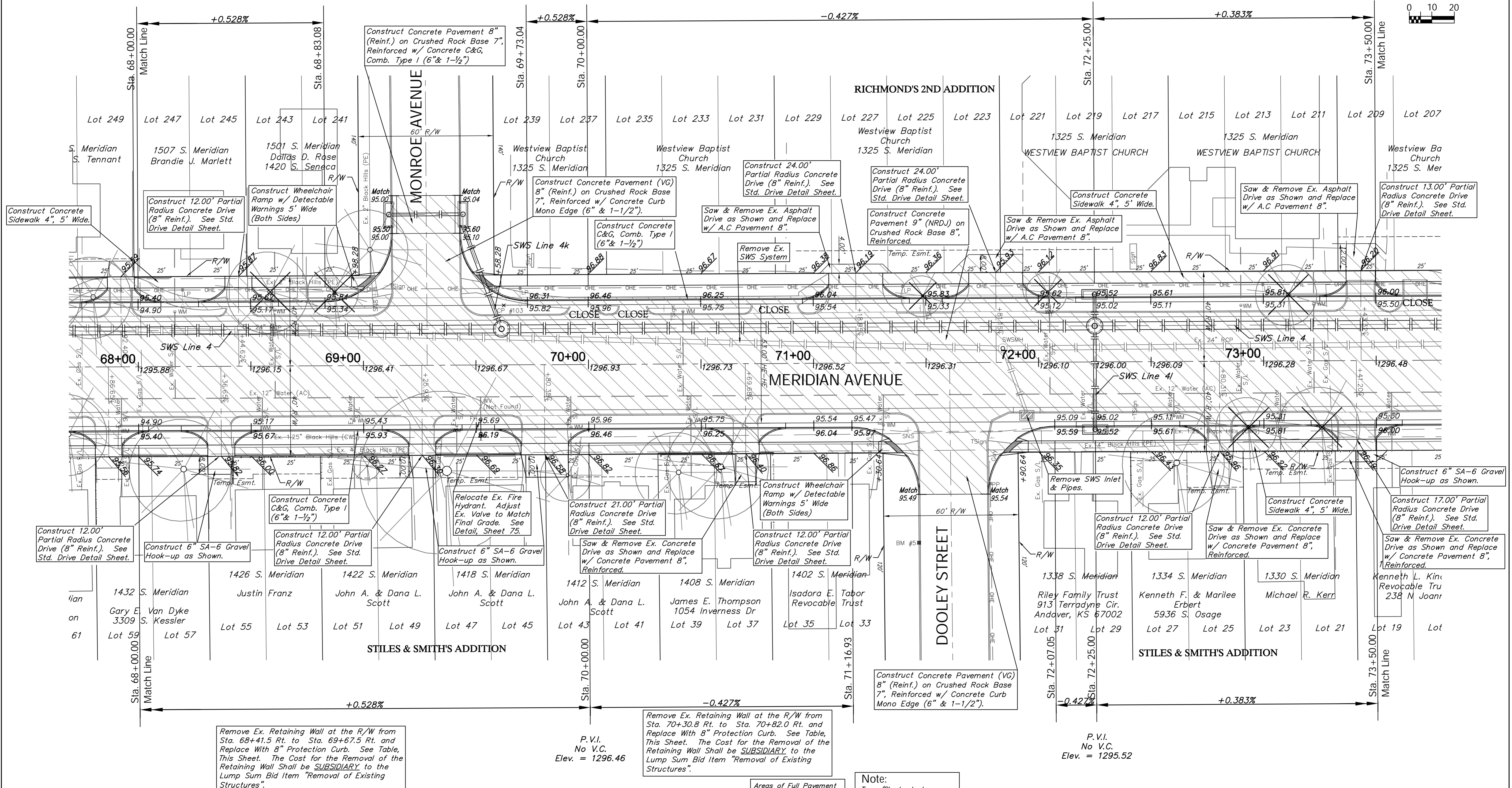
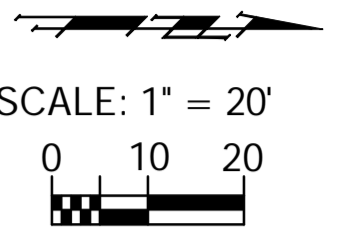


BENCHMARK:  
 BM #5 - Chiseled "a" on the Top of Curb on the South Side of  
 Dooley Street, 80± East of Centerline of Meridian.  
 Elev. = 1296.20 (NAVD 88)

PROTECTION CURB					
STA. TO STA. (BASELINE)	ROADWAY	SIDE	HEIGHT	LENGTH (ft.)	
67+92.7	68+30.7	Meridian	Rt.	6"	38.0
67+98.4	68+15.0	Meridian	Lt.	6"	16.6
68+42.7	69+19.9	Meridian	Rt.	8"	77.2
69+31.9	69+69.9	Meridian	Rt.	8"	38.0

PROTECTION CURB					
STA. TO STA. (BASELINE)	ROADWAY	SIDE	HEIGHT	LENGTH (ft.)	
70+30.8	70+63.7	Meridian	Rt.	8"	32.9
70+65.7	70+82.4	Meridian	Lt.	8"	16.7

REGION NO.	STATE	PROJECT NO.	FISCAL YEAR	SHEET NO.	TOTAL SHEETS
7	KANSAS	087 N-0593-01	2015	24	153



Note:  
 Trees/Shrubs to be removed are marked thus:

Areas of Full Pavement Removal & Replacement are Indicated By:

Drawing File: E:\Projects\Meridian - Orient to McCormick\Civil 3d\Meridian Base.dwg (Pav 11)  
 Project No. 1004 E493 CAPITAL IMPROVEMENT PROJECT  
 Design: TPV  
 Drawn: STAFF  
 Approved: TPV  
 Scale: NOTED

MERIDIAN AVENUE PAVING  
 Sta. 68+00.00 to Sta. 73+50.00  
 MERIDIAN AVENUE - PAVING AVENUE TO MCCORMICK AVENUE

**Baughman Company, P.A.**  
 315 Ellis St., Wichita, KS 67211 P 316-262-7271 F 316-262-0149  
 ENGINEERING | SURVEYING | PLANNING | LANDSCAPE ARCHITECTURE