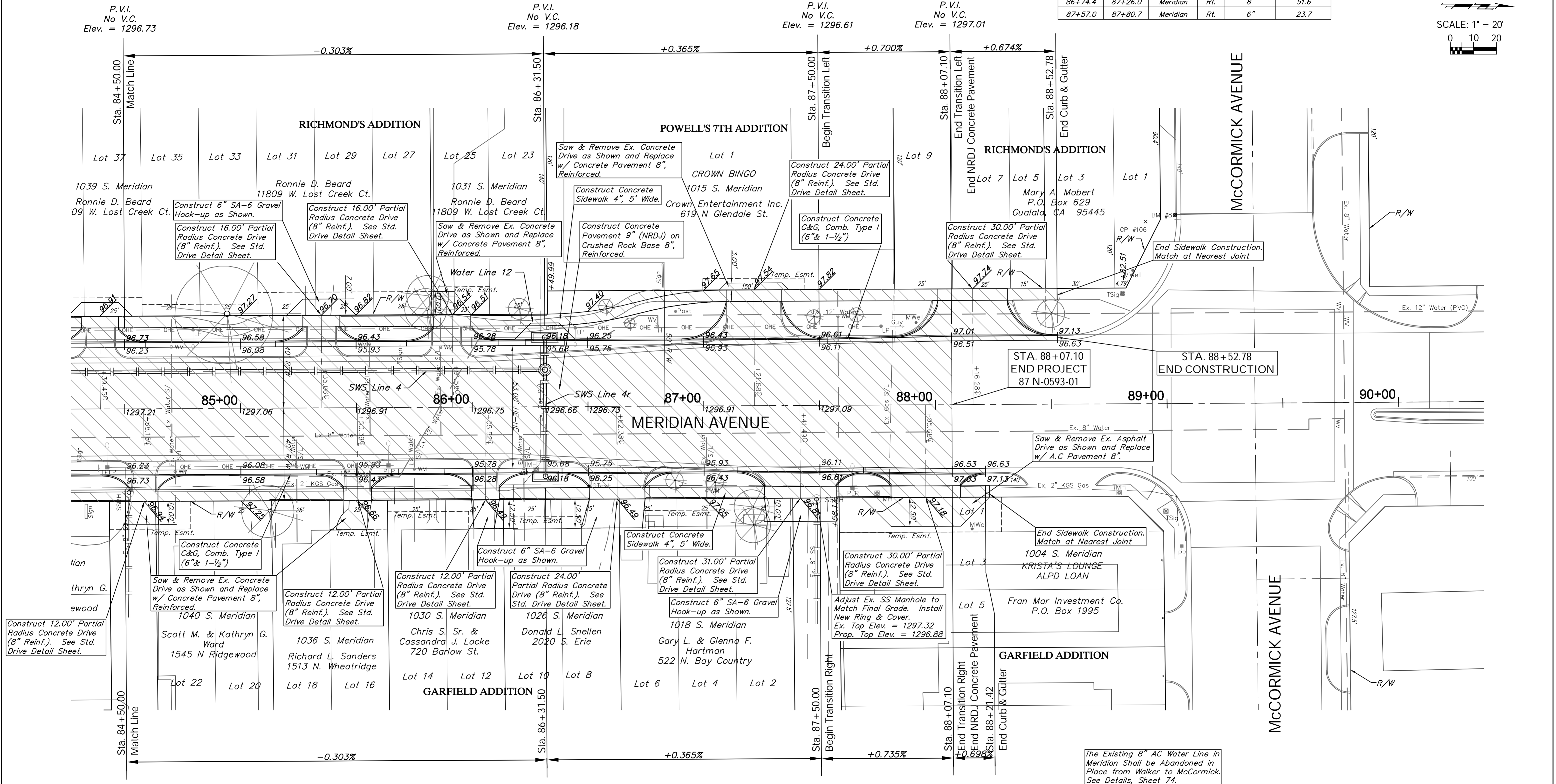
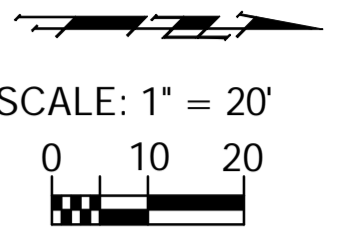


BENCHMARK:
 BM #8 - Chiseled "a" on West Curb Return on the Southwest
 Corner of Meridian and McCormick
 Elev. = 1297.18 (NAVD 88)

REGION NO.	STATE	PROJECT NO.	FISCAL YEAR	SHEET NO.	TOTAL SHEETS
7	KANSAS	087 N-0593-01	2015	27	153

PROTECTION CURB				
STA. TO STA. (BASELINE)	ROADWAY	SIDE	HEIGHT	LENGTH (ft.)
86+11.5 - 86+50.4	Meridian	Rt.	8"	38.9
86+74.4 - 87+26.0	Meridian	Rt.	8"	51.6
87+57.0 - 87+80.7	Meridian	Rt.	6"	23.7



PROTECTION CURB				
STA. TO STA. (BASELINE)	ROADWAY	SIDE	HEIGHT	LENGTH (ft.)
85+12.0 - 85+44.4	Meridian	Rt.	6"	32.4
85+43.1 - 85+83.6	Meridian	Rt.	6"	40.5
85+56.4 - 85+99.5	Meridian	Rt.	6"	43.1
85+99.6 - 86+32.8	Meridian	Rt.	6"	33.2

The Contractor Shall Completely Remove the Traffic Manholes at 86+28 Rt. and 87+75 Rt. Any Cables Still in the Manholes or in Conduits Between the Manholes Shall be Salvaged and Returned to the City of Wichita Traffic Department. Contact Brian Coon at 268-4448 for More Information. All Costs Associated with this Work Shall be Considered **INCIDENTAL** to the Lump Sum Bid Item "Removal of Existing Structures".

Areas of Full Pavement Removal & Replacement are Indicated By:

Note:
 Trees/Shrubs to be removed are marked thus:

Design File: E:\Projects\Meridian - Orient to McCormick\Civil 3d\Meridian Base.dwg (Pav 14)
 Design: TPV
 Drawn: STAFF
 Approved: TPV
 Scale: NOTED

Project No. 1004E493 CAPITAL IMPROVEMENT PROJECT
MERIDIAN AVENUE PAVING
 Sta. 84 + 50.00 to Sta. 88 + 52.78
 MERIDIAN AVENUE - PAVINE AVENUE TO MCCORMICK AVENUE