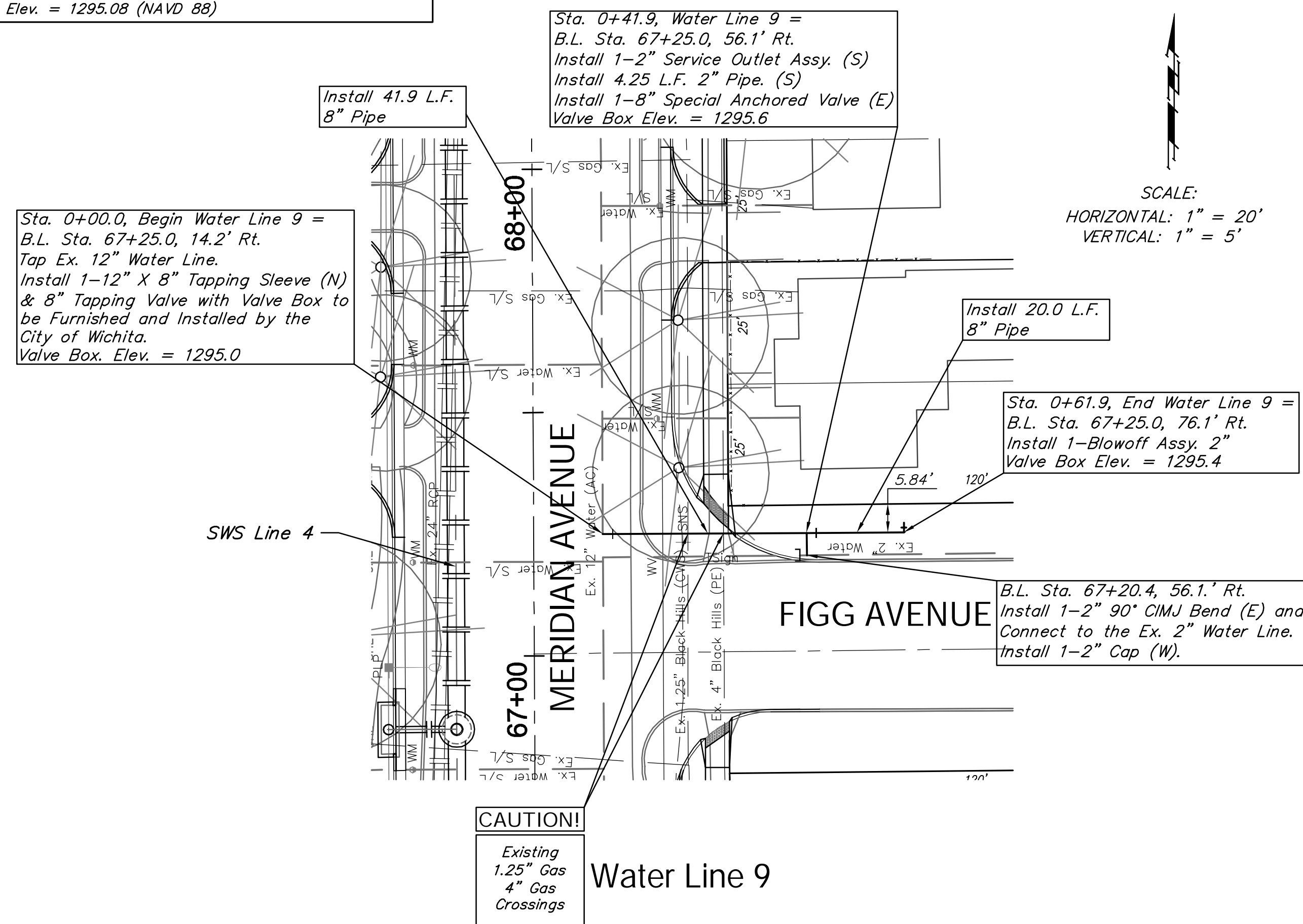
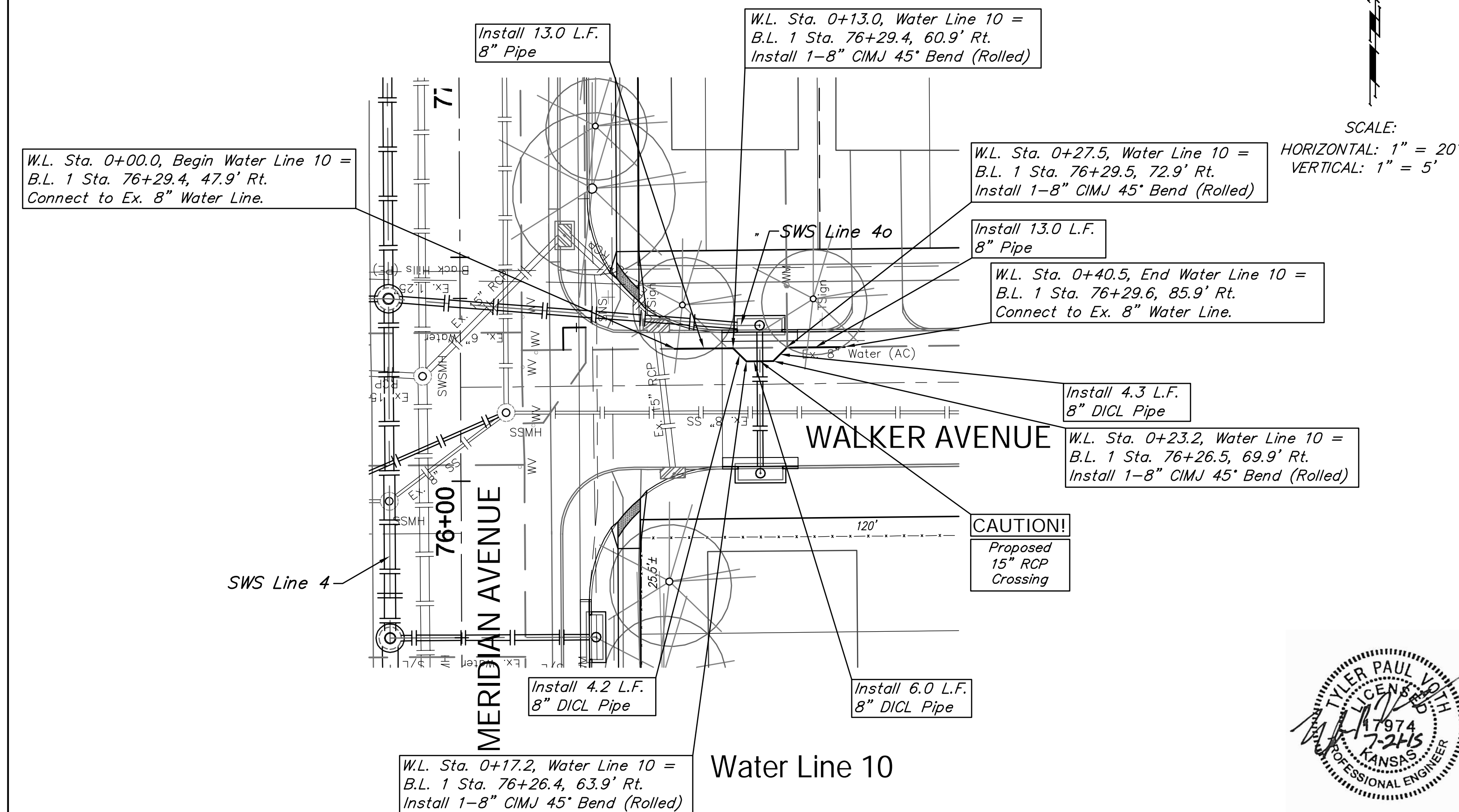


BENCHMARK:
 BM #4 - Chiseled "a" on the Top of Curb on the South Side of Figg Street, 80± East of Centerline of Meridian.
 Elev. = 1295.08 (NAVD 88)



BENCHMARK:
 BM #6 - Chiseled "a" on the Top of Curb on the South Side of Walker Street, 80± East of Centerline of Meridian.
 Elev. = 1295.44 (NAVD 88)



REGION NO.	STATE	PROJECT NO.	FISCAL YEAR	SHEET NO.	TOTAL SHEETS
7	KANSAS	087 N-0593-01	2015	71	153

