

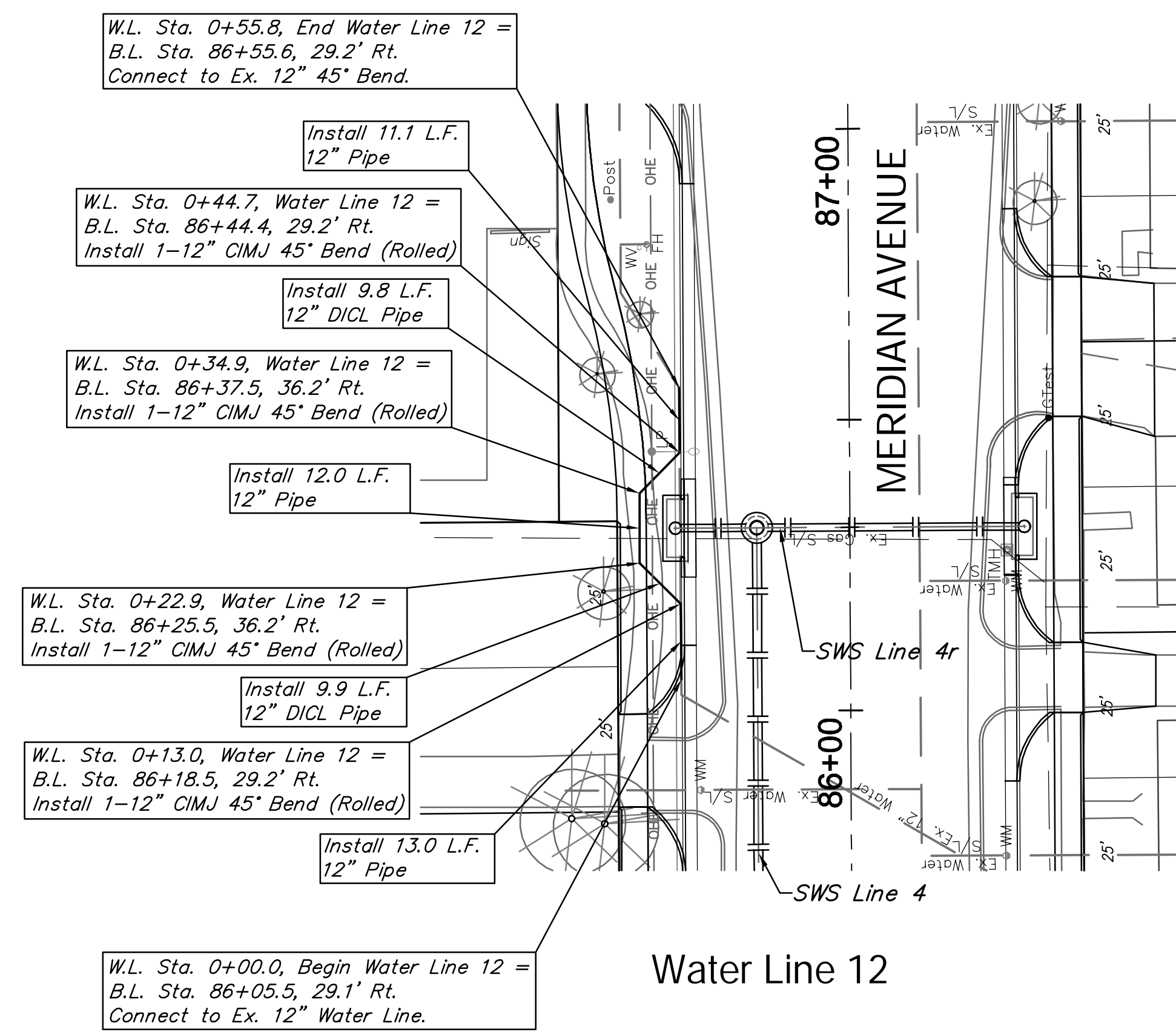
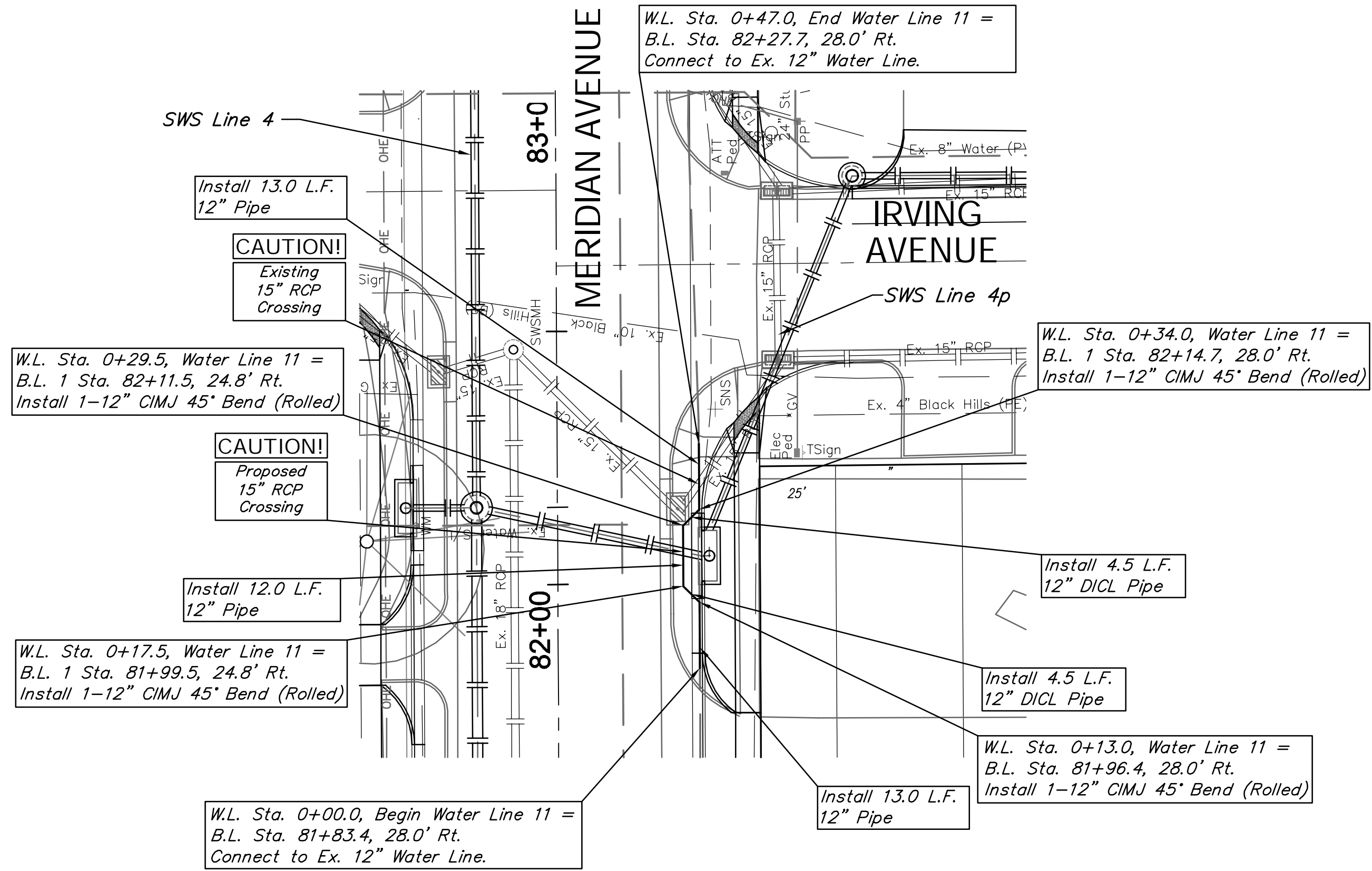
BENCHMARK:  
 BM #7 - Chiseled "b" on the Top of Curb on the South Side of Irving Avenue, 100'± East of Centerline of Meridian.  
 Elev. = 1295.86 (NAVD 88)

BENCHMARK:  
 BM #9 - Chiseled "b" on West Curb Return on the Southwest Corner of Meridian and McCormick  
 Elev. = 1297.18 (NAVD 88)

REGION NO.	STATE	PROJECT NO.	FISCAL YEAR	SHEET NO.	TOTAL SHEETS
7	KANSAS	087 N-0593-01	2015	72	153

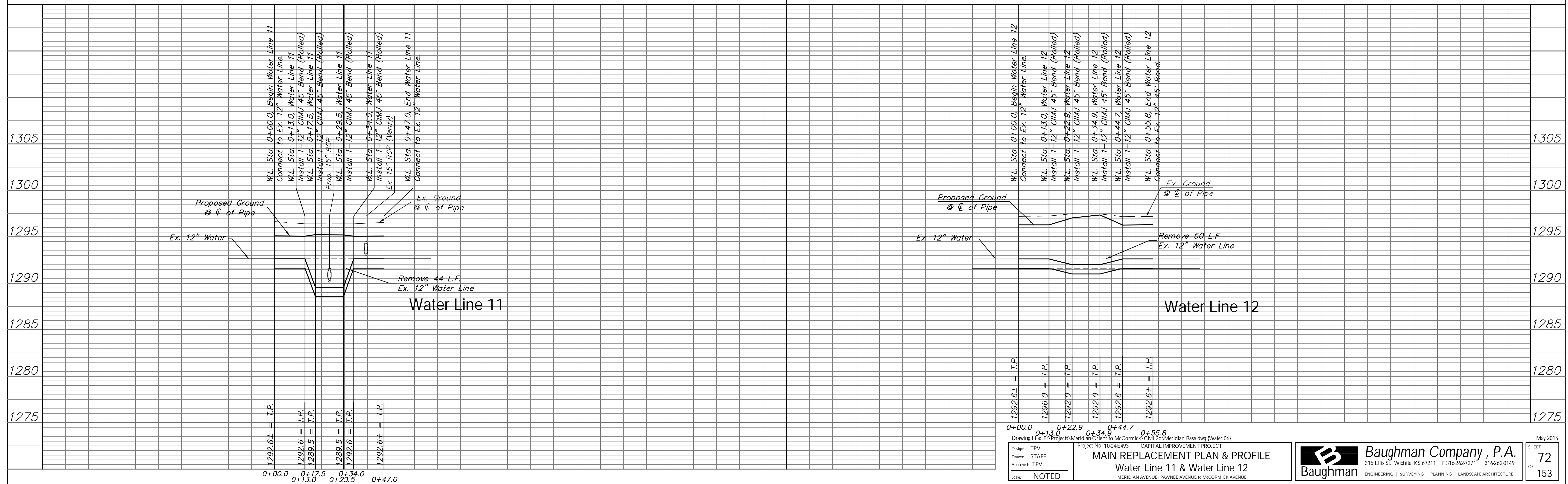
SCALE:  
 HORIZONTAL: 1" = 20'  
 VERTICAL: 1" = 5'

SCALE:  
 HORIZONTAL: 1" = 20'  
 VERTICAL: 1" = 5'



Water Line 11

Water Line 12



Design: TPV  
 Drawn: STAFF  
 Approved: TPV  
 Scale: NOTED

MAIN REPLACEMENT PLAN & PROFILE  
 Water Line 11 & Water Line 12  
 MERIDIAN AVENUE - PAWNEE AVENUE TO MCCORMICK AVENUE

**Baughman Company, P.A.**  
 315 Ellis St., Wichita, KS 67211 P 316-262-7271 F 316-262-0149  
 ENGINEERING | SURVEYING | PLANNING | LANDSCAPE ARCHITECTURE

May 2015  
 SHEET 72 OF 153