

BENCHMARK:
 BM #8 - Chiseled "b" on West Curb Return on the Southwest
 Corner of Meridian and McCormick
 Elev. = 1297.18 (NAVD 88)

REGION NO.	STATE	PROJECT NO.	FISCAL YEAR	SHEET NO.	TOTAL SHEETS
7	KANSAS	087 N-0593-01	2015	73	153

SCALE:
 HORIZONTAL: 1" = 20'
 VERTICAL: 1" = 5'

Sta. 0+4.1, Begin Water Line 13 =
 B.L. Sta. 93+82.9, 39.1 Lt.
 Saw & Remove Ex. 12" Pipe as
 Necessary.
 Install 1-12" Anchored Valve Assy.
 Valve Box Elev. = 1298.2
 Install 1-12" 45° CIMJ Bend (Rt.) (Rolled)
 Block as Necessary.

Sta. 2+16.7, Water Line 13 =
 B.L. Sta. 95+96.0, 30.6 Lt.
 Begin Trenchless Installation of
 135.4 L.F. 21" Steel Casing Pipe

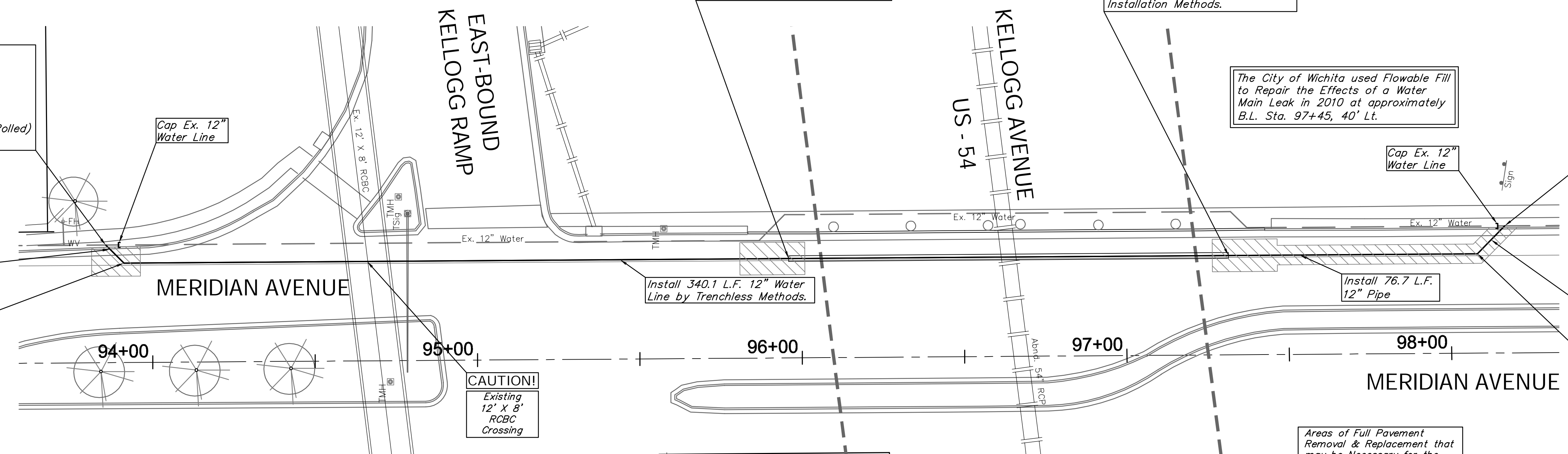
Sta. 3+52.1, Water Line 13 =
 B.L. Sta. 97+31.5, 30.6 Lt.
 End Trenchless Installation of
 135.4 L.F. 21" Steel Casing Pipe
 End Trenchless Water Line
 Installation Methods.

The City of Wichita used Flowable Fill
 to Repair the Effects of a Water
 Main Leak in 2010 at approximately
 B.L. Sta. 97+45, 40' Lt.


Sta. 4+40.8, End Water Line 13 =
 B.L. Sta. 98+16.6, 39.1' Lt.
 Saw & Remove Ex. 12" Pipe as
 Necessary.
 Install 1-12" Anchored Valve Assy.
 Valve Box Elev. = 1298.4
 Install 1-12" 45° CIMJ Bend (Rt.)
 Block as Necessary.

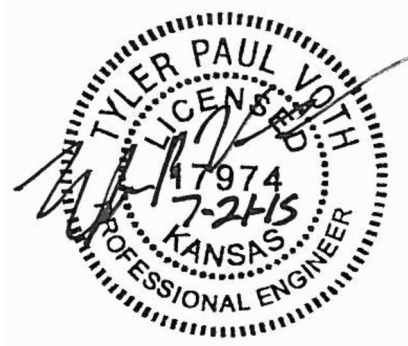
Sta. 0+12.0, Water Line 13 =
 B.L. Sta. 93+91.4, 30.60' Lt.
 Install 1-12" 45° CIMJ Bend (Lt.)
 Block as Necessary.
 Begin Trenchless Installation Methods.

Sta. 4+28.8, Water Line 13 =
 B.L. Sta. 98+08.1, 30.6 Lt.
 Install 1-12" 45° CIMJ Bend (Lt.)
 Block as Necessary.

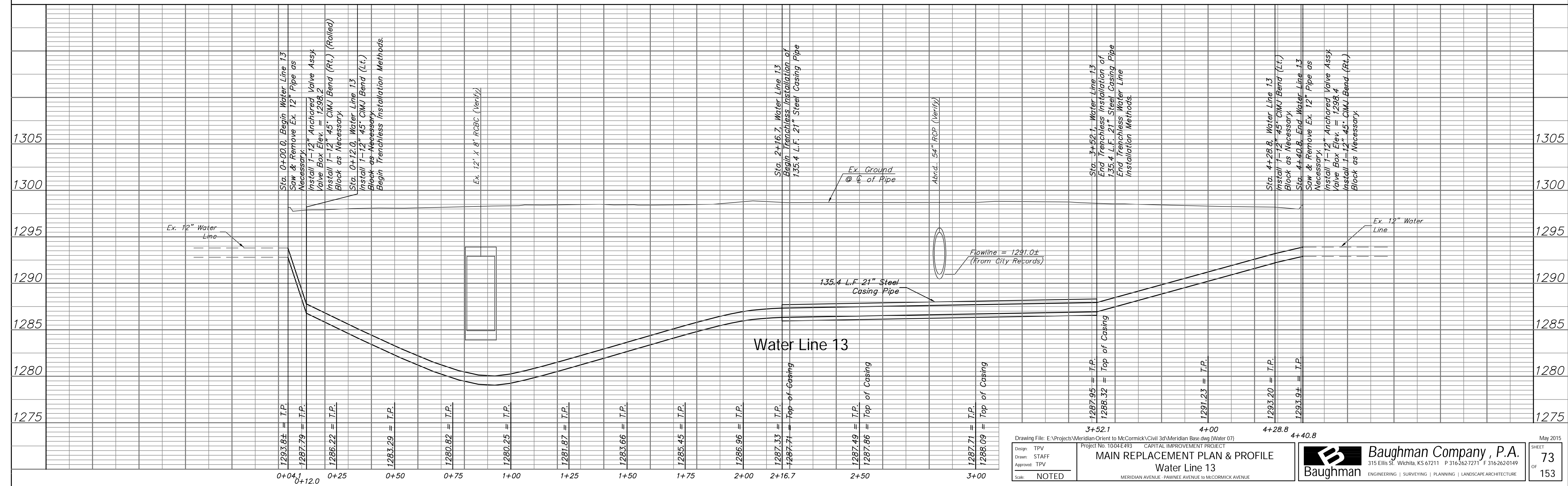


CAUTION!
 Existing
 12' X 8'
 RCBC
 Crossing

Areas of Full Pavement
 Removal & Replacement that
 may be Necessary for the
 Water Line Construction are
 Indicated By:

 All Cost Associated with this
 Work Shall be Considered
 SUBSIDIARY to the Cost of
 the Water Line Installation.



Water Line 13



Drawing File: E:\Projects\Meridian Orient to McCormick\Civil 3d\Meridian Base.dwg (Water 07)
 Project No. 1004-E493 CAPITAL IMPROVEMENT PROJECT
MAIN REPLACEMENT PLAN & PROFILE
 Water Line 13
 MERIDIAN AVENUE - PAWNEE AVENUE TO MCCORMICK AVENUE

Baughman Company, P.A.
 315 Ellis St. Wichita, KS 67211 P 316-262-7271 F 316-262-0149
 ENGINEERING | SURVEYING | PLANNING | LANDSCAPE ARCHITECTURE