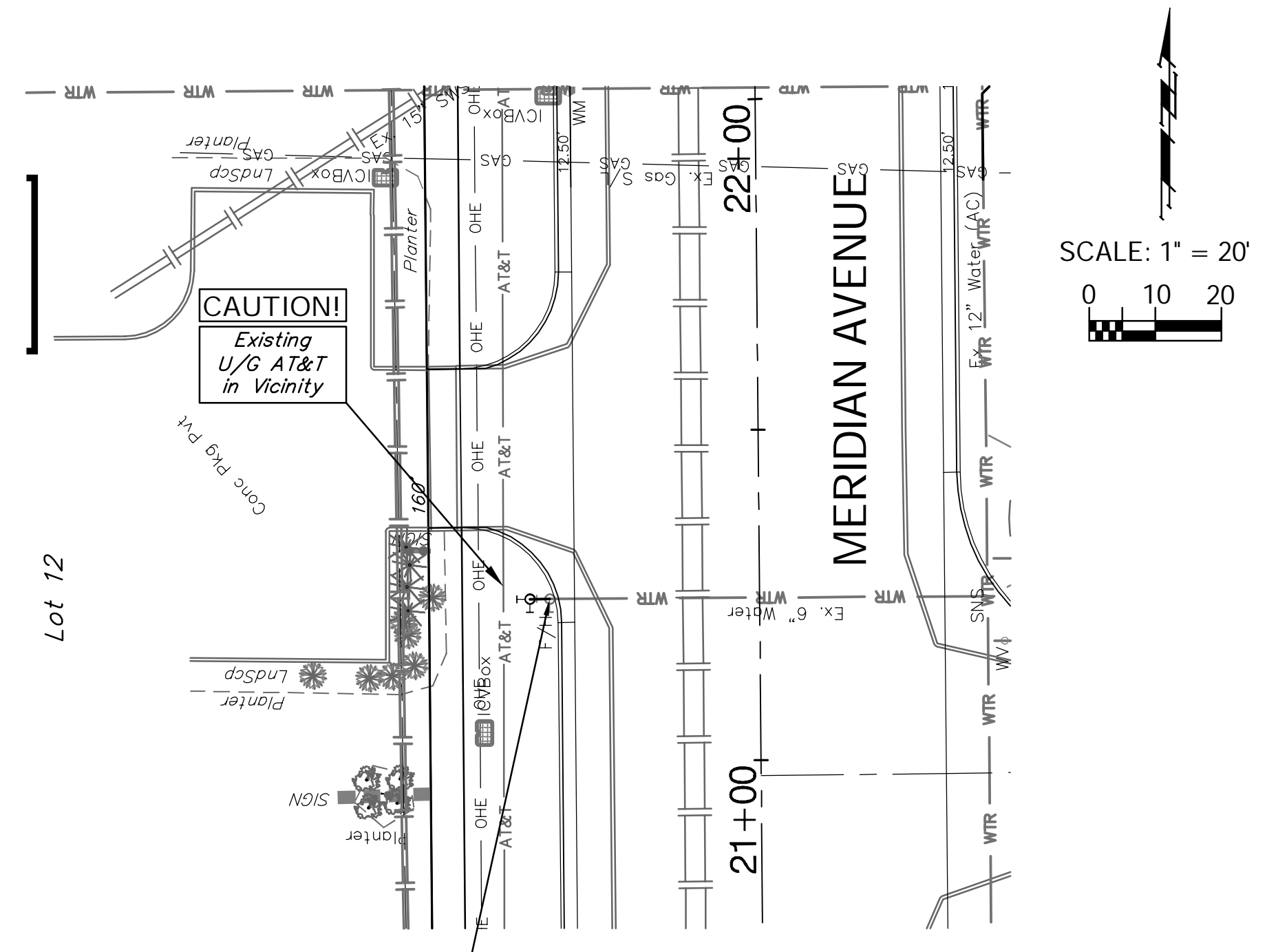


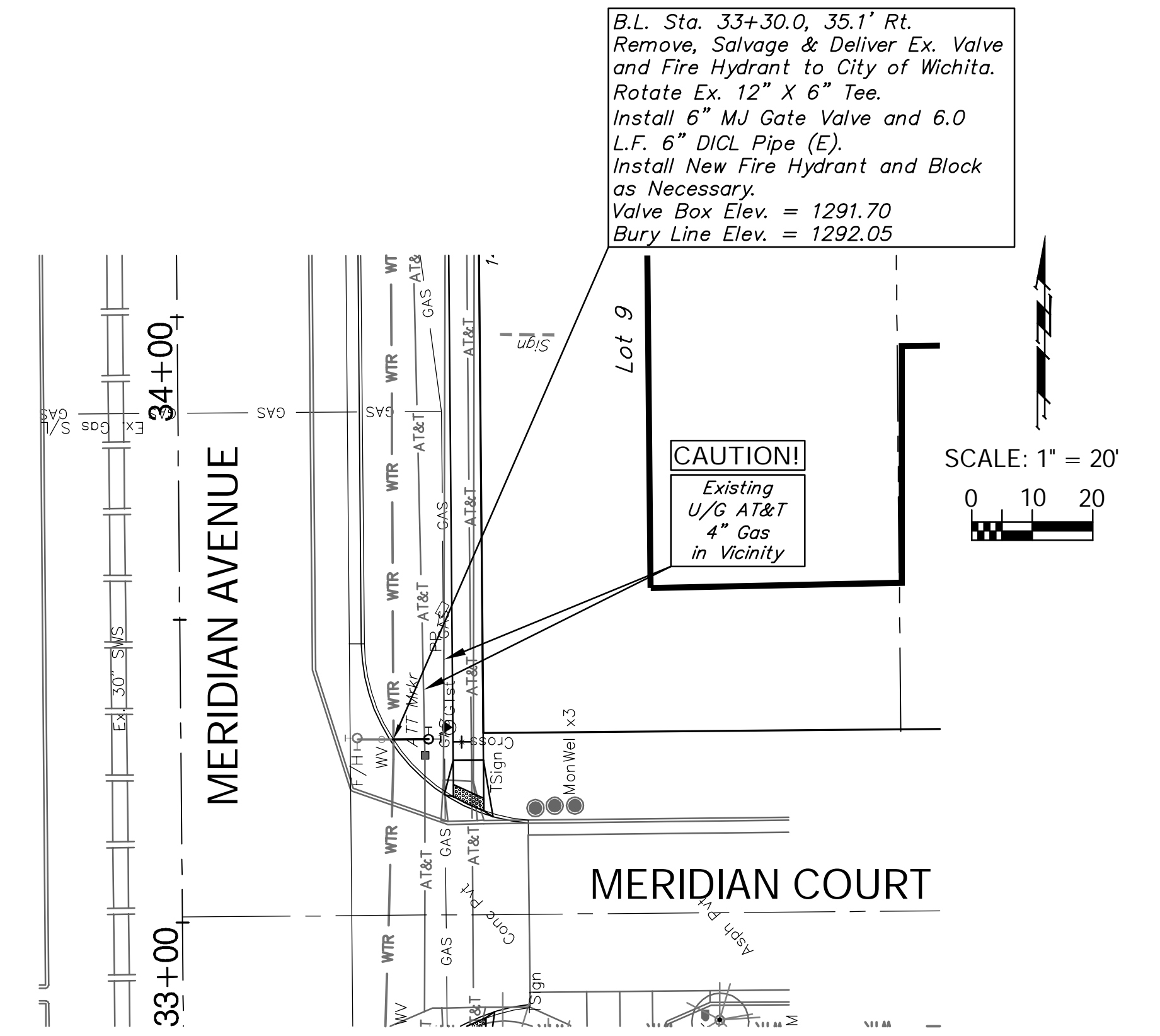
REGION NO.	STATE	PROJECT NO.	FISCAL YEAR	SHEET NO.	TOTAL SHEETS
7	KANSAS	087 N-0593-01	2015	74	153

All Cost Associated with Installing the Fire Hydrant Leads and Fire Hydrants shall be SUBSIDIARY to the "Fire Hydrant Relocation" Bid Item.

The Fire Hydrant Extensions Shall Require Ductile Iron Pipe and Restrained Joint Fittings.



B.L. Sta. 21+24.7, 31.7' Lt. Remove, Salvage & Deliver Ex. Fire Hydrant to City of Wichita. Extend Ex. 6" Fire Hydrant Lead 3.0 L.F. West. Install New Fire Hydrant and Block as Necessary. Bury Line Elev. = 1290.26



B.L. Sta. 33+30.0, 35.1' Rt. Remove, Salvage & Deliver Ex. Valve and Fire Hydrant to City of Wichita. Rotate Ex. 12" X 6" Tee. Install 6" MJ Gate Valve and 6.0 L.F. 6" DICTL Pipe (E). Install New Fire Hydrant and Block as Necessary. Valve Box Elev. = 1291.70 Bury Line Elev. = 1292.05

Drawing File: E:\Projects\MeridianPawnee to Orient\Civil 3D\Meridian Base.dwg (FH 01)
Project No. 0806E186 CAPITAL IMPROVEMENT PROJECT

Design: TPV
Drawn: Sonny
Approved: TPV
Scale: NOTED

FIRE HYDRANT RELOCATIONS
MERIDIAN AVENUE - PAWNEE AVENUE TO MCCORMICK AVENUE

Baughman Company, P.A.
315 Ellis St. Wichita, KS 67211 P 316-262-7271 F 316-262-0149
ENGINEERING | SURVEYING | PLANNING | LANDSCAPE ARCHITECTURE



May 2015
SHEET 74 OF 153