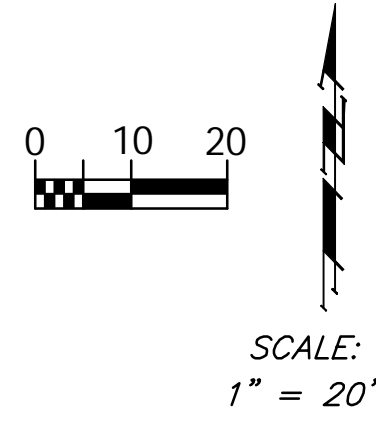
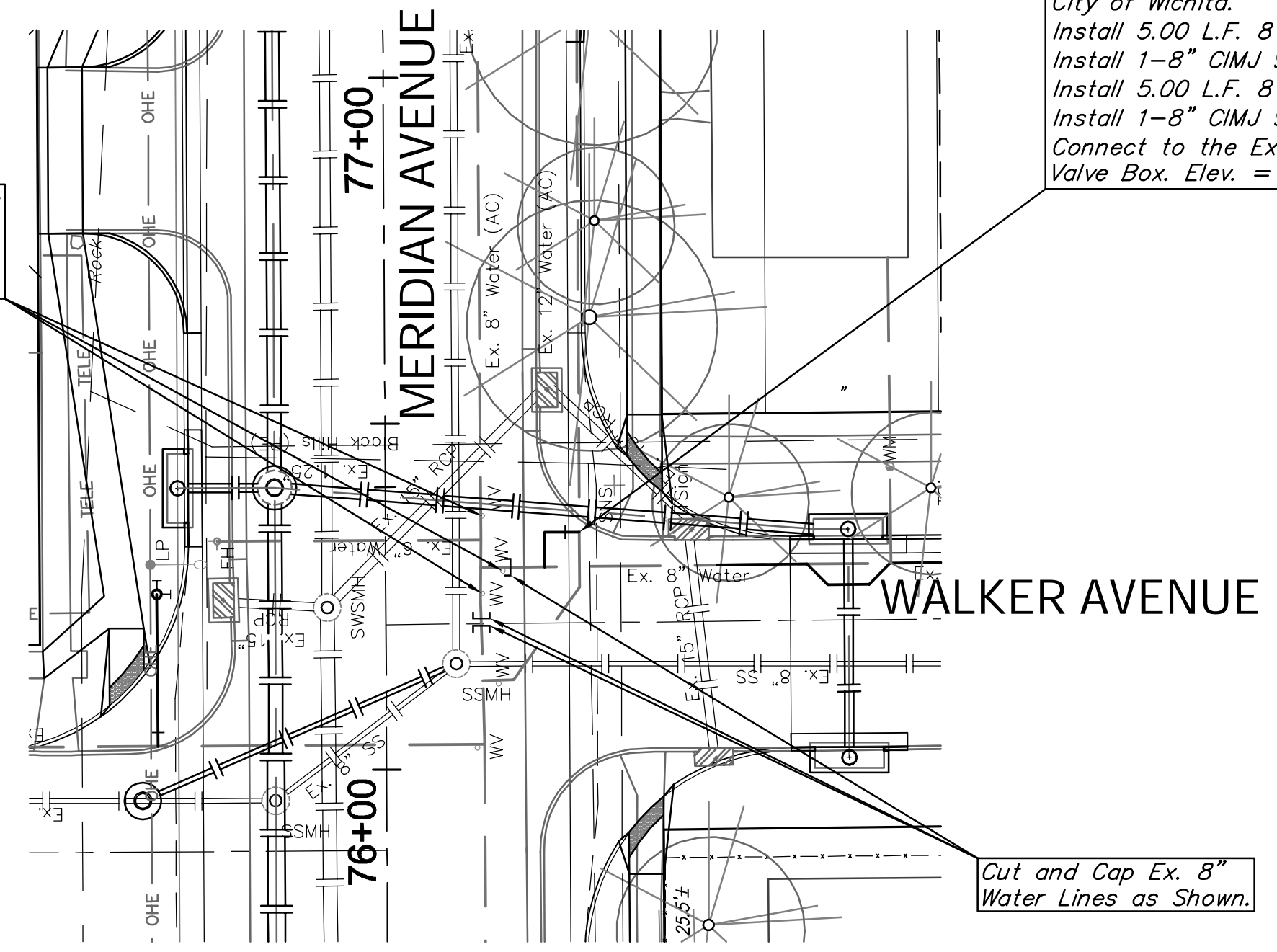


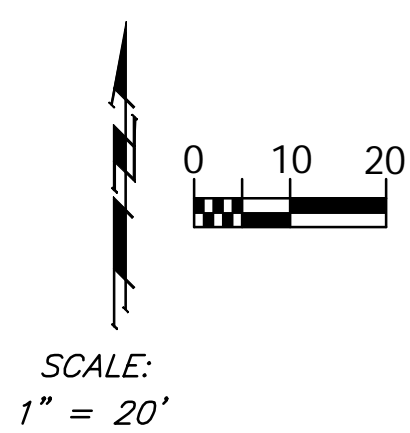
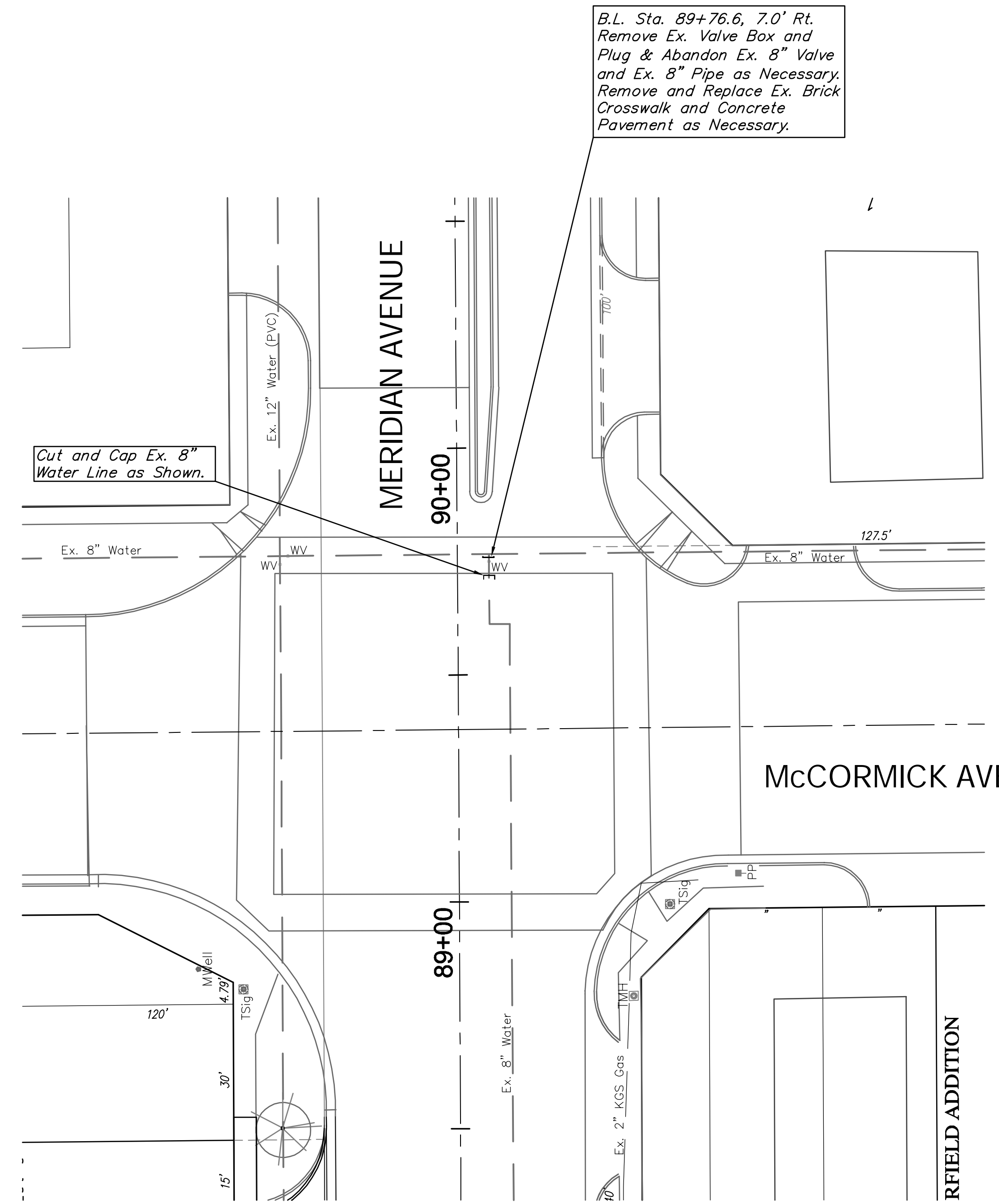
Remove Ex. Valve Boxes and Plug & Abandon Ex. 8" Valves. Cost to be **SUBSIDIARY** to Measured Quantity Bid Item "Valve Box Removal".



B.L. Sta. 76+34.2, 28.0' Rt.
Tap Ex. 12" Water Line.
Install 1-12" X 8" Tapping Sleeve (W) & 8" Tapping Valve with Valve Box to be Furnished and Installed by the City of Wichita.
Install 5.00 L.F. 8" DICI Pipe (W)
Install 1-8" CIMJ 90° Bend (S)
Install 5.00 L.F. 8" DICI Pipe (S)
Install 1-8" CIMJ 90° Bend (E) and Connect to the Ex. 8" Water Line. Valve Box. Elev. = 1295.5

Cut and Cap Ex. 8" Water Lines as Shown.

All Cost Associated with Abandoning the Existing 8" Water Line, Including All Pipes, Fittings, Connections, and Pavement Removal and Replacement, shall be **SUBSIDIARY** to the Lump Sum Bid Item "Abandon 8" Waterline".



B.L. Sta. 89+76.6, 7.0' Rt.
Remove Ex. Valve Box and Plug & Abandon Ex. 8" Valve and Ex. 8" Pipe as Necessary. Remove and Replace Ex. Brick Crosswalk and Concrete Pavement as Necessary.

Cut and Cap Ex. 8" Water Line as Shown.

