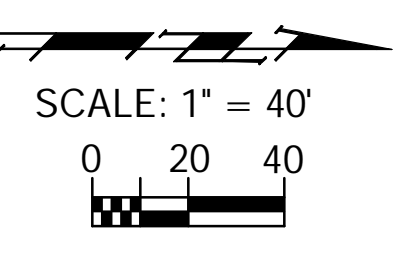
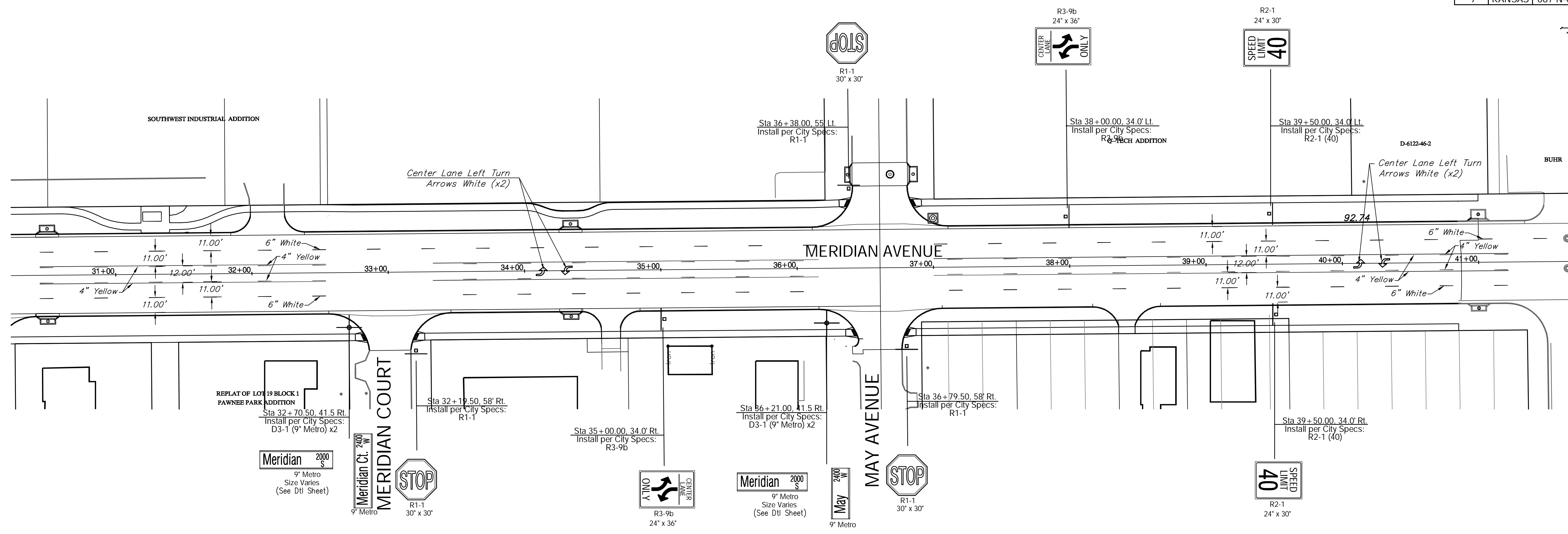
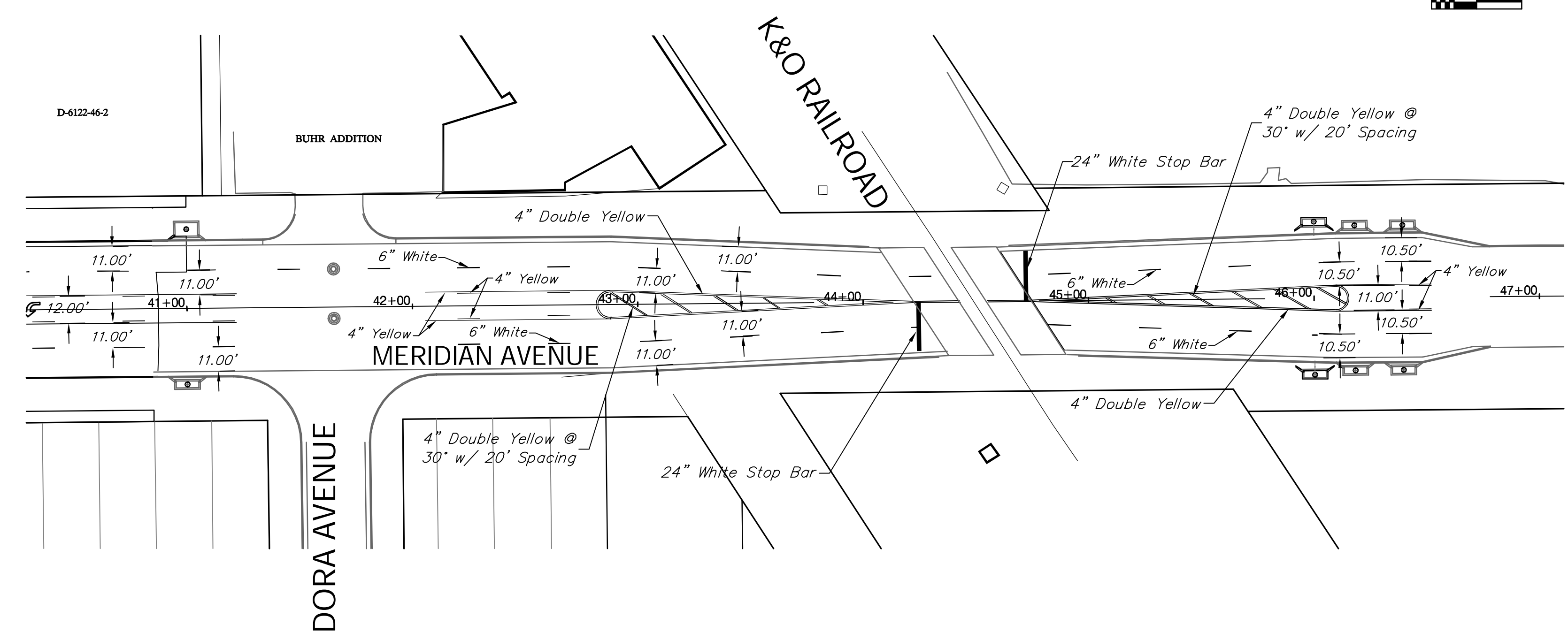
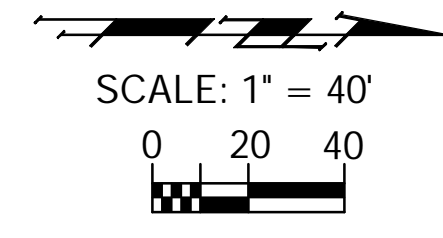


REGION NO.	STATE	PROJECT NO.	FISCAL YEAR	SHEET NO.	TOTAL SHEETS
7	KANSAS	087 N-0593-01	2015	103	153



The Striping Contractor will be required to entirely remove the existing pavement markings on the previously improved section of Meridian between Sta. 40+85 and 46+48. These removal costs shall be SUBSIDIARY to the Lump Sum Bid Item "Pavement Marking".



Drawing File: E:\Projects\Meridian - Pawnee to Orient\Traffic\Marking Base.dwg (Mark 02)  
 Design: TPV  
 Drawn: STAFF  
 Approved: TPV  
 Scale: NOTED

Project No. 0808E186 CAPITAL IMPROVEMENT PROJECT  
**MERIDIAN AVENUE MARKING & SIGNING PLAN**  
 MERIDIAN AVENUE - PAWNEE AVENUE TO ORIENT BOULEVARD

**Baughman Company, P.A.**  
 315 Ellis St. Wichita, KS 67211 P 316-262-7271 F 316-262-0149  
 ENGINEERING | SURVEYING | PLANNING | LANDSCAPE ARCHITECTURE

May 2015  
 SHEET **103**  
 OF **153**