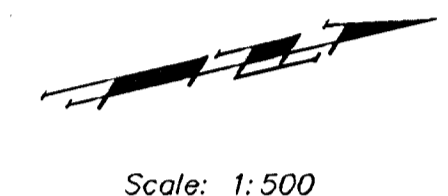
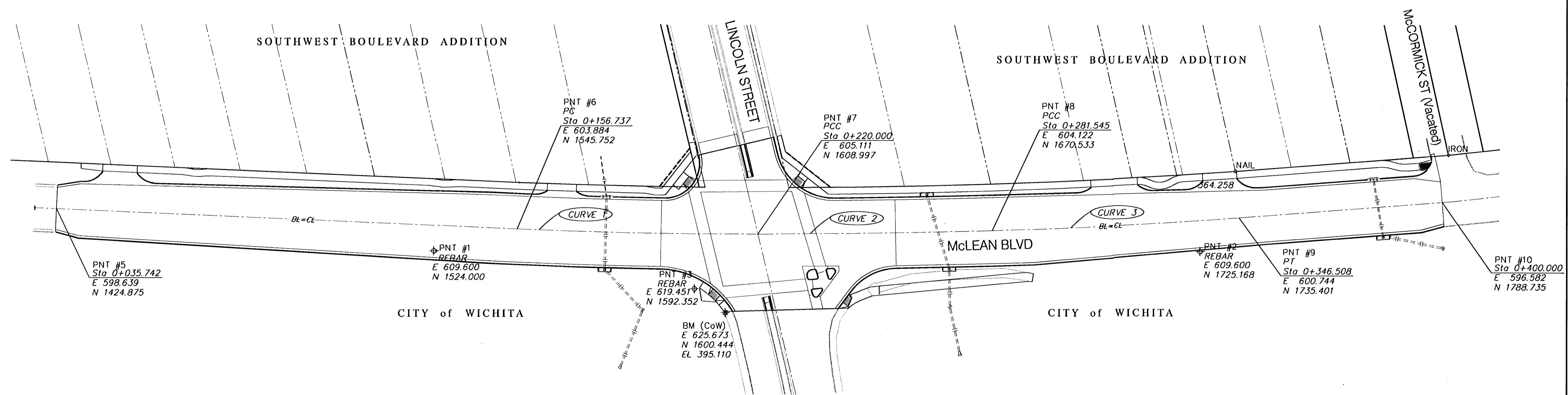


BENCHMARK  
 BM #1 - City of Wichita Disc Located  
 at the SW Corner of the Lincoln  
 Street Bridge at McLean.  
 Elev. 395.110 SI Units (1296.29 MSL)

FHWA REGION NO.	STATE	PROJECT NO.	FISCAL YEAR	SHEET NO.	TOTAL SHEETS
7	KANSAS	87-N-0225-01	2002	2	47



Scale: 1:500



Point	Northing	Easting	Elevation	Description	Sta	Offset
1	1524.000	609.600	394.585	REBAR	0+499.507	6.653
2	1725.168	609.600	394.914	REBAR	0+335.690	8.092
3	1592.352	619.451	394.539	REBAR	0+203.451	14.369
4	1600.444	625.673	395.110	BM (COW)	0+211.467	20.550
5	1424.875	598.639		BEGIN	0+035.742	0
6	1545.752	603.884		PC	0+156.737	0
7	1608.997	605.111		PCC	0+220.000	0
8	1670.533	604.122		PCC	0+281.545	0
9	1735.401	600.744		PT	0+346.508	0
10	1788.735	596.582		END	0+400.000	0

CURVE 1  
 RAD. = 1319.364  
 LENGTH = 63.263  
 DELTA = 2°44'50"

CURVE 2  
 RAD. = 2678.786  
 LENGTH = 61.545  
 DELTA = 1°18'59"

CURVE 3  
 RAD. = 1328.065  
 LENGTH = 64.963  
 DELTA = 2°48'10"



PROJECT NUMBER 472-83799		SHEET NAME KEYSHT		ENGINEERING DIRECTORY F:\LinMeln\		CAPITAL IMPROVEMENT PROJECT <b>KEYSHEET</b>		BAUGHMAN COMPANY, P.A. ENGINEERING, SURVEYING, & PLANNING 316-262-7271 • 315 ELLIS • WICHITA, KANSAS 67211		SHEET 2 OF 47
DESIGN JFB	DRAWN KWR	APPROVED JFB	DATE July 2003	SCALE NOTED	BAUGHMAN NO. 01-03-E944	LINCOLN AND MCLEAN INTERSECTION IMPROVEMENTS				