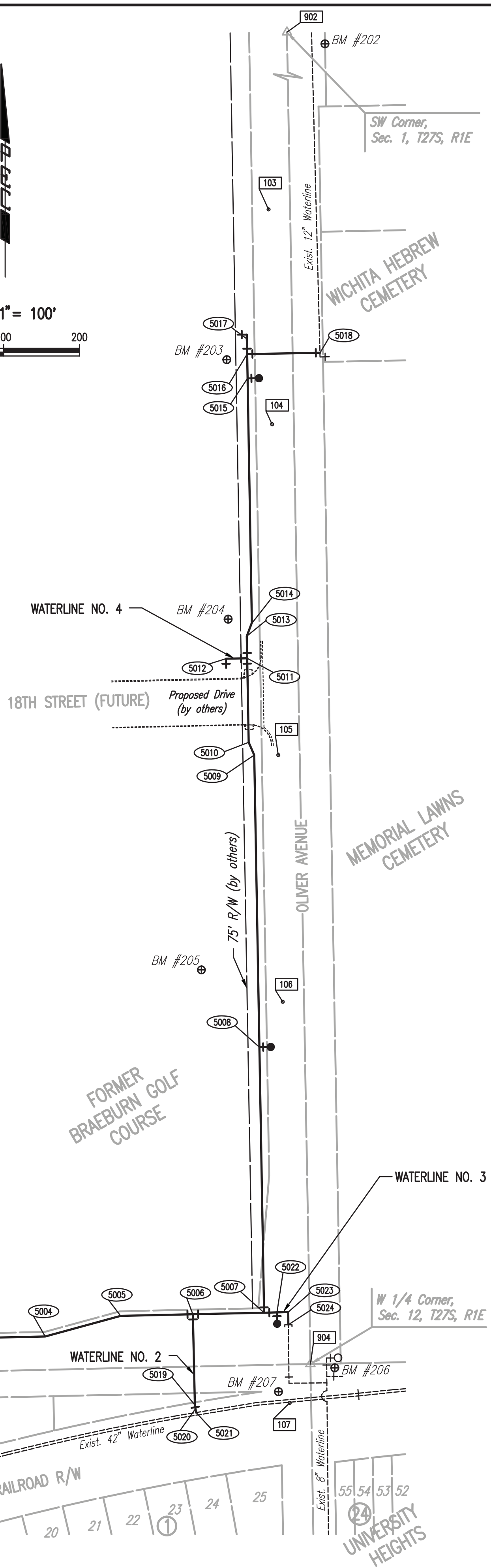
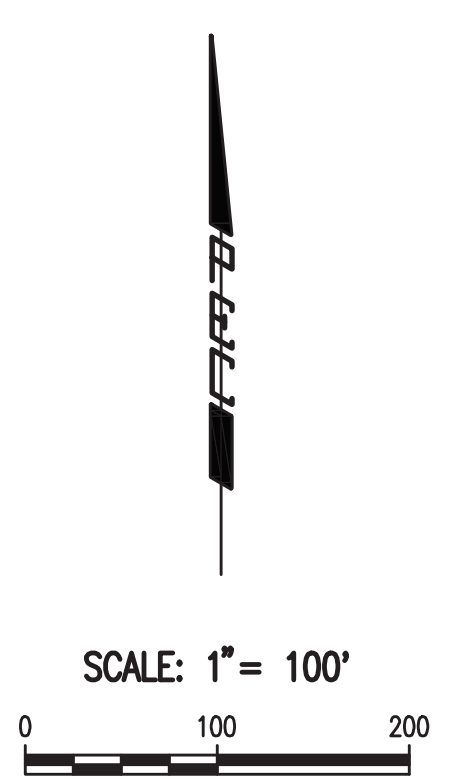


- CONTROL POINTS**
- Pt. No. 103**
1/2" BAR ON WEST SIDE OF OLIVER AVENUE ON GOLF COURSE
N: 1,698,116.1300, E: 1,664,974.5330
3.55' EAST TO WEST CURB OF OLIVER
100' ± SOUTH OF NORTH ENTRANCE TO HEBREW CEMETERY
69.10' SOUTHEAST TO LIGHT POLE BETWEEN CEMETERY ENTRANCES
- Pt. No. 104**
1/2" BAR ON WEST SIDE OF OLIVER AVENUE ON GOLF COURSE
N: 1,697,832.8566, E: 1,664,979.2394
3.30' EAST TO WEST CURB OF OLIVER AVENUE
99.20' SOUTHEAST TO LIGHT POLE #A2286
53.20' WEST TO EAST SIDE OF SIDEWALK
- Pt. No. 105**
1/2" BAR ON WEST SIDE OF OLIVER AVENUE ON GOLF COURSE
N: 1,697,396.6430, E: 1,664,987.4820
3.00' EAST TO WEST CURB OF OLIVER AVENUE
55.80' EAST TO LIGHT POLE #A2284
53.70' WEST TO EAST EDGE OF SIDEWALK
- Pt. No. 106**
1/2" BAR ON WEST SIDE OF OLIVER AVENUE ON GOLF COURSE
N: 1,697,071.3360, E: 1,664,993.2910
3.25' EAST TO WEST CURB OF OLIVER AVENUE
55.05' EAST TO LIGHT POLE #A2282
115.25' NORTHWEST TO CHISELED SQUARE ON WEST SIDE OF SIDEWALK
- Pt. No. 107**
1/2" BAR AT THE SOUTHWEST CORNER OF OLIVER AVENUE AND 17TH STREET
N: 1,696,542.3290, E: 1,665,002.3910
4.85' EAST TO WEST CURB OF OLIVER AVENUE
20.92' NORTHWEST TO BOLT AND WASHER AT THE SOUTHWEST CORNER OF A SIGNAL MANHOLE
14.23' NORTH TO TRAFFIC SIGNAL POLE
- Pt. No. 2275**
600 NAIL ON THE SOUTH SIDE OF 17TH STREET
N: 1,696,543.2380, E: 1,664,324.2180
36.12' NORTH TO @ OF 17TH STREET
173.86' NORTHEAST TO CHISELED SQUARE AT THE NORTHWEST CORNER OF THE WEST OF 3 INLETS
3.00' NORTHEAST TO POWER POLE

- SECTION CORNERS**
- Pt. No. 902**
SOUTHWEST CORNER, SEC. 1, T27S, R1E
FOUND 3/4" PIPE IN THIMBLE IN-LINE WITH CENTERLINES OF 21ST STREET AND OLIVER STREET
N: 1,699,248.5100, E: 1,664,983.0700
61.92' SOUTHWEST TO THE CENTER OF A TRAFFIC SIGNAL MANHOLE
69.83' NORTHWEST TO CHISELED CROSS IN CONCRETE PAD FOR A TRAFFIC SIGNAL MANHOLE
74.03' NORTHEAST TO THE CENTER OF A TRAFFIC SIGNAL MANHOLE
69.66' SOUTHEAST TO THE CENTER OF A TRAFFIC SIGNAL
- Pt. No. 904**
WEST 1/4 CORNER, SEC. 12, T27S, R1E
FOUND 1/2" IRON PIPE IN THIMBLE AT INTERSECTION OF CENTERLINES OF 17TH STREET NORTH AND OLIVER ROAD
N: 1,696,593.7700, E: 1,665,029.9200
44.69' NORTHWEST TO CHISELED CROSS ON TOP OF CURB AT MIDPOINT OF CURVE
51.03' NORTHWEST TO THE SOUTHWEST CORNER OF CONCRETE PAD FOR CROSS WALK SIGNAL LIGHT POLE
38.13' NORTHEAST TO THE SOUTHWEST BOLT FOR BASE OF A TRAFFIC SIGNAL LIGHT POLE
28.38' EAST SOUTHEAST TO A PK NAIL IN THE NORTH FACE OF A POWER POLE
- Pt. No. 906**
CENTER CORNER, SEC. 11, T27S, R1E
FOUND 3/4" IRON PIPE IN THIMBLE HALF-WAY BETWEEN BLUFF STREET AND GENTRY STREET AND IN CENTERLINE OF 17TH STREET
N: 1,696,536.6900, E: 1,662,370.9900
28.70' SOUTH SOUTHEAST TO PK NAIL IN THE WEST FACE OF POWER POLE
58.87' SOUTHWEST TO PK NAIL IN THE NORTH FACE OF POWER POLE
49.01' NORTHEAST TO THE CENTER OF A CITY OF WICHITA BRASS DISK BENCH MARK
40.54' NORTH NORTHEAST TO PK NAIL 0.1' INSIDE WEST FACE OF A 15" DIA. OSAGE TREE, THE SOUTHWEST 1 OF 3 TREES
73.54' EAST NORTHEAST TO A CHISELED CROSS ON TOP OF THE NORTH CURB OF 17TH STREET AT A 40' COTTONWOOD TREE
- BENCH MARK LIST**
- BM #202** - CHISELED SQUARE ON SOUTHWEST CORNER OF SIGN BASE AT 2020 NORTH OLIVER "CHILD START"
ELEV.=1411.31 (NAVD88)
- BM #203** - CHISELED SQUARE ON WEST EDGE OF SIDEWALK ON WSU GOLF COURSE STRAIGHT WEST OF SOUTHWEST CORNER OF WICHITA HEBREW CEMETERY
ELEV.=1409.68 (NAVD88)
- BM #204** - CHISELED SQUARE ON WEST EDGE OF SIDEWALK ON WSU GOLF COURSE 2 POLES SOUTH OF SOUTHWEST CORNER OF WICHITA HEBREW CEMETERY POLE #A22285
ELEV.=1411.60 (NAVD88)
- BM #205** - CHISELED SQUARE ON WEST SIDE OF SIDEWALK ON WSU GOLF COURSE AT MID POINT OF CURVE, 3 POLES NORTH OF 17TH STREET AND OLIVER AVENUE, POLE #A22282
ELEV.=1409.77 (NAVD88)
- BM #206** - CHISELED SQUARE ON SOUTHWEST CORNER OF TRAFFIC SIGNAL BOX PAD ON EAST SIDE OF OLIVER AVENUE, AT 17TH STREET EXTENDED
ELEV.=1411.18 (NAVD88)
- BM #207** - CHISELED SQUARE WITH BOLT AND WASHER IN CENTER AT THE SOUTHWEST CORNER OF TRAFFIC SIGNAL MANHOLE PAD AT THE SOUTHWEST CORNER OF OLIVER AVENUE AND 17TH STREET
ELEV.=1409.14 (NAVD88)
- BM #211** - CHISELED SQUARE AT THE NORTHWEST CORNER OF THE WEST OF 3 CURB INLETS ON THE NORTH SIDE OF 17TH STREET, 550' ± WEST OF OLIVER AVENUE
ELEV.=1405.66 (NAVD88)



WATERLINE NO. 1 - COORDINATE LIST

POINT	NORTH	EAST	STATION	DESCRIPTION
5000	1,696,593.0670	1,663,718.3620	0+00.00	REDUCER
5001	1,696,608.9434	1,663,718.0130	0+15.88	BEND
5002	1,696,614.5166	1,663,971.5229	2+69.45	HYDRANT
5003	1,696,614.6398	1,663,977.1238	2+75.05	TEE
5004	1,696,630.0916	1,664,679.9853	9+78.09	BEND
5005	1,696,657.2852	1,664,779.5234	10+81.28	BEND
5006	1,696,659.3785	1,664,874.7398	11+76.50	TEE
5007	1,696,661.4445	1,664,968.7150	12+70.51	TEE
5008	1,697,011.5899	1,664,962.5363	16+20.70	HYDRANT
5009	1,697,396.7206	1,664,955.7404	20+05.90	BEND
5010	1,697,413.4940	1,664,948.4433	20+24.19	BEND
5011	1,697,513.4784	1,664,946.6790	21+24.19	TEE
5013	1,697,553.4722	1,664,945.9733	21+64.19	BEND
5014	1,697,570.4925	1,664,952.6740	21+82.48	BEND
5015	1,697,893.4547	1,664,946.9751	25+05.50	HYDRANT
5016	1,697,925.5797	1,664,946.4082	25+37.63	TEE
5017	1,697,945.5765	1,664,946.0553	25+37.63, 20' N	BLOWOFF
5018	1,697,927.2757	1,665,042.5227	26+33.75	BEND

5000 = COORDINATE POINT NO.
SEE SHEET NO. 4-9 FOR WATERLINE NO. 1 PLAN AND PROFILE.

WATERLINE NO. 2 - COORDINATE LIST

POINT	NORTH	EAST	STATION	DESCRIPTION
5006	1,696,659.3785	1,664,874.7398	0+00.00	TEE
5019	1,696,539.6221	1,664,877.3725	1+19.79	BEND
5020	1,696,534.6983	1,664,878.2418	1+24.79	BEND
5021	1,696,529.7744	1,664,879.1111	1+29.79	TAPPING SLEEVE

SEE SHEET NO. 10 FOR WATERLINE NO. 2 PLAN AND PROFILE.

WATERLINE NO. 3 - COORDINATE LIST

POINT	NORTH	EAST	STATION	DESCRIPTION
5007	1,696,661.4445	1,664,968.7150	0+00.00	TEE
5022	1,696,661.5631	1,664,974.1137	0+05.40	HYDRANT
5023	1,696,662.1444	1,665,000.5528	0+31.85	BEND
5024	1,696,645.5441	1,665,000.8427	0+48.45	CONNECTION

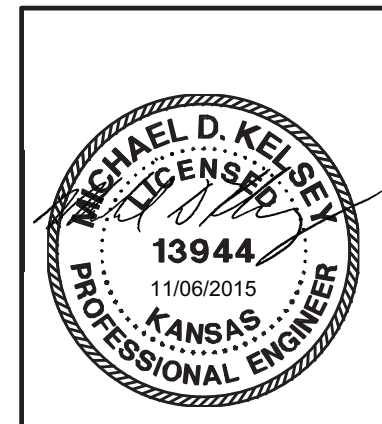
SEE SHEET NO. 10 FOR WATERLINE NO. 3 PLAN AND PROFILE.


WATERLINE NO. 4 - COORDINATE LIST

POINT	NORTH	EAST	STATION	DESCRIPTION
5011	1,697,513.4784	1,664,946.6790	0+00.00	TEE
5012	1,697,513.3038	1,664,936.6805	0+10.00	BLOWOFF

SEE SHEET NO. 8 FOR WATERLINE NO. 4 PLAN AND PROFILE.

Scaled 10-12-2015 12:24:53 PM by CSI
 Plot Scale 1:1 11-05-2015 4:08:07 PM by CSI
 U:\Wichita-Civil\2015\15084\001\Drawings\15084-001-C3-BUBBLE.MXD



No.	Revision	By	Date
17TH STREET AND OLIVER AVENUE WATERLINE EXTENSIONS SERVING THE WSU INNOVATION CAMPUS			
BUBBLE MAP GARY JANZEN, P.E. - CITY ENGINEER CITY OF WICHITA PROJECT NO. 448-90666			
 PEC PROFESSIONAL ENGINEERING CONSULTANTS, P.A. 303 SOUTH TOPEKA WICHITA, KS 67202 316-262-2691 www.pec1.com			
Designed by	MDK, SAD	Job No.	35-15084-001-42
Drawn by	CSL, KTD	Date	APRIL 2015
			Sht. 3 of 17