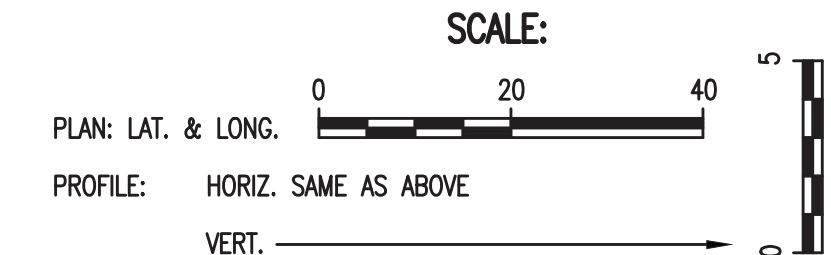
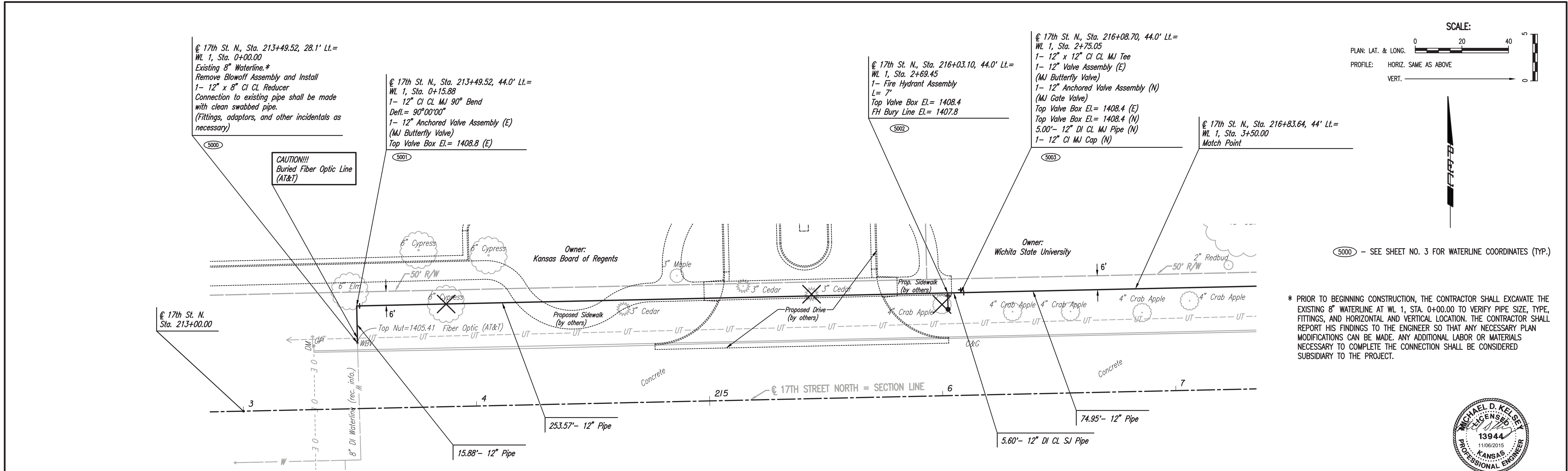


PLAN	CHECKED	CHECKED
BY		
DATE		

PROFILE	CHECKED	CHECKED
BY		
DATE		

Saved: 10-12-2015 1:31:18 PM by: CSI  
 Plot Scale: 1" = 11'-05"-2015 4:06:28 PM by: CSI  
 U:\Wichita-Civil\2015\5084\001\Drawings\5084-001-C4-WATERLINE NO. 1



5000 - SEE SHEET NO. 3 FOR WATERLINE COORDINATES (TYP.)

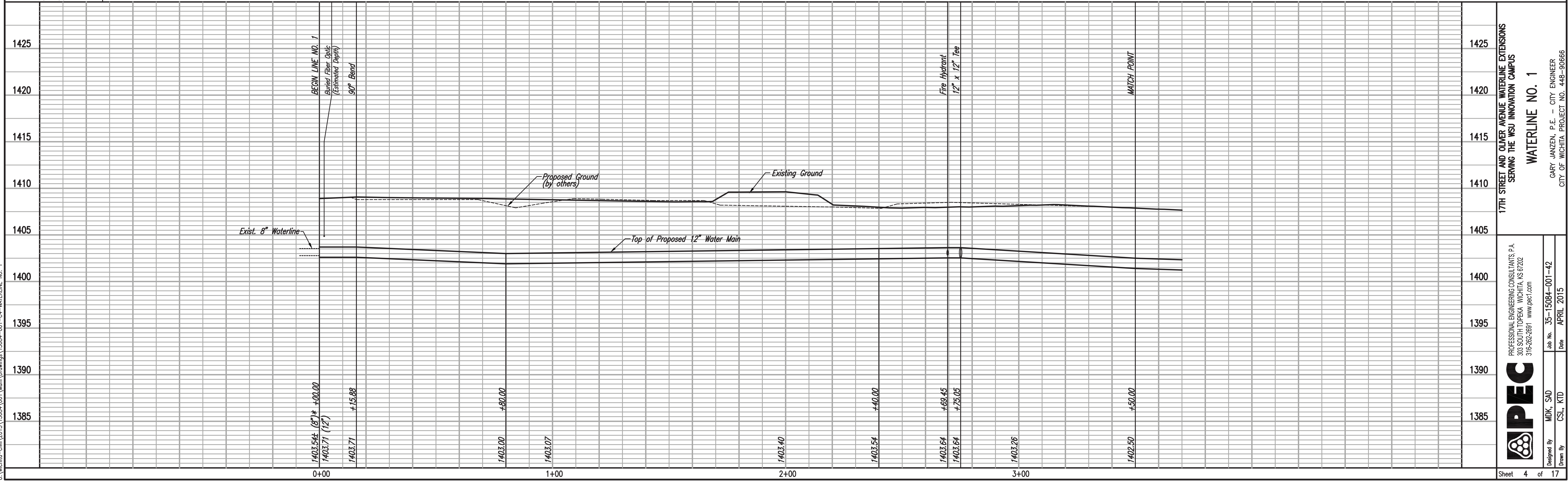
\* PRIOR TO BEGINNING CONSTRUCTION, THE CONTRACTOR SHALL EXCAVATE THE EXISTING 8" WATERLINE AT WL 1, STA. 0+00.00 TO VERIFY PIPE SIZE, TYPE, FITTINGS, AND HORIZONTAL AND VERTICAL LOCATION. THE CONTRACTOR SHALL REPORT HIS FINDINGS TO THE ENGINEER SO THAT ANY NECESSARY PLAN MODIFICATIONS CAN BE MADE. ANY ADDITIONAL LABOR OR MATERIALS NECESSARY TO COMPLETE THE CONNECTION SHALL BE CONSIDERED SUBSIDIARY TO THE PROJECT.



Unless noted otherwise, elevations shown are top of pipe

WATERLINE NO. 1

X = Denotes Tree to be removed.



17TH STREET AND OLIVER AVENUE WATERLINE EXTENSIONS  
 SERVING THE WSU INNOVATION CAMPUS

WATERLINE NO. 1

GARY JANZEN, P.E. - CITY ENGINEER  
 CITY OF WICHITA PROJECT NO. 448-90666

PEC  
 PROFESSIONAL ENGINEERING CONSULTANTS P.A.  
 303 SOUTH TOPEKA WICHITA, KS 67202  
 316-262-2691 www.pec1.com

Designed By: MDK, SAD  
 Drawn By: CSL, KTD

Job No.: 35-15084-001-42  
 Date: APRIL 2015

Sheet 4 of 17