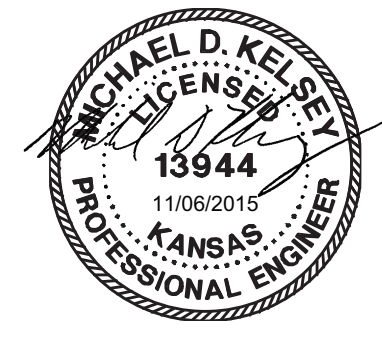
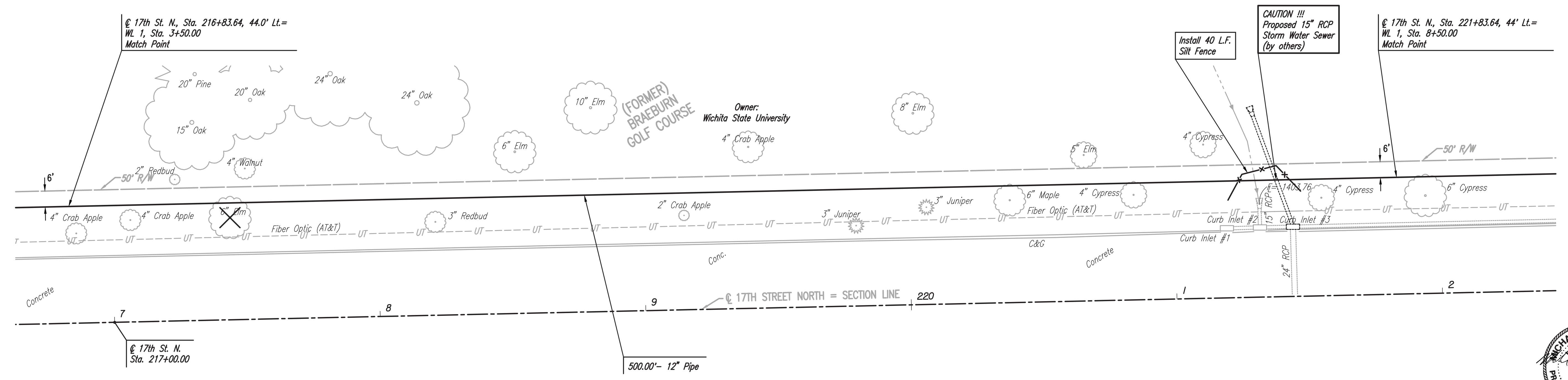
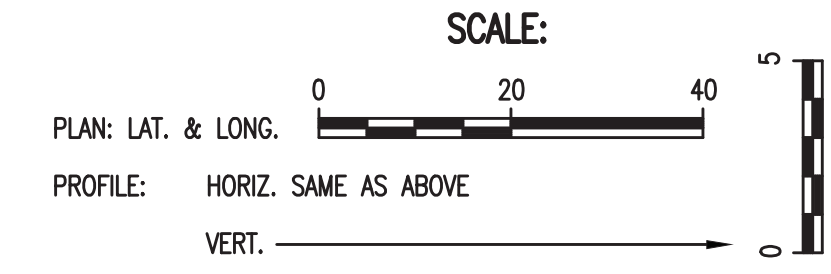


PLAN	CHECKED	DATE
	CHECKED	
BY		

PROFILE	CHECKED	DATE
	CHECKED	
BY		

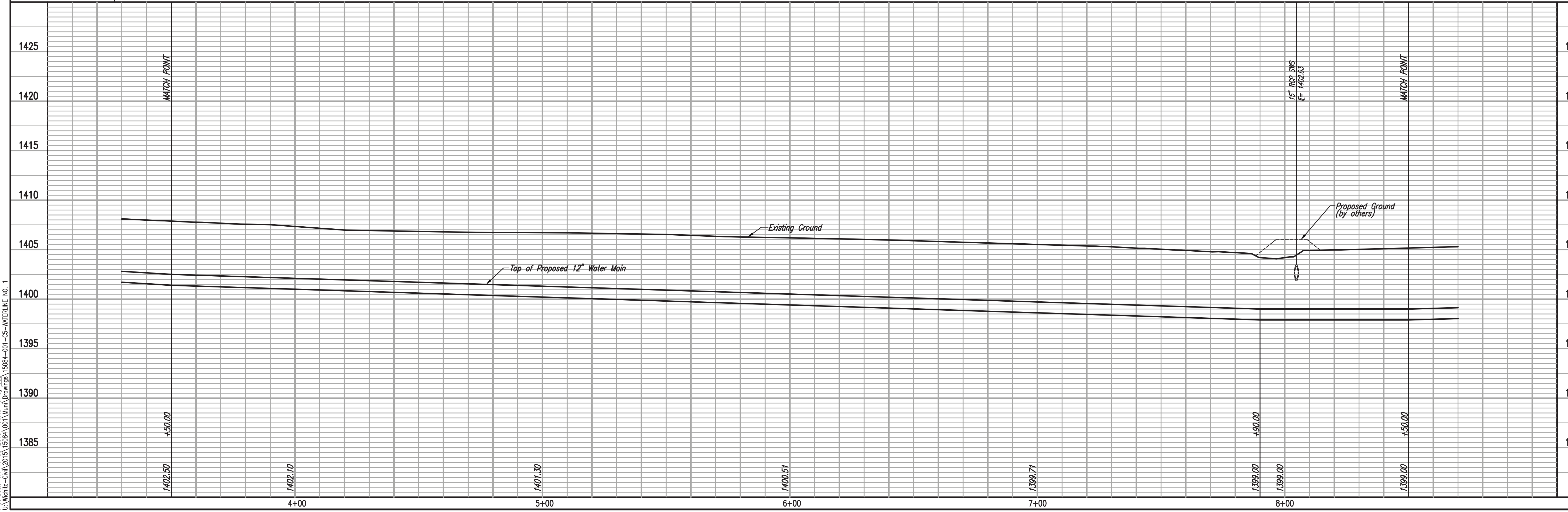
Saved: 10-12-2015 12:48:26 PM by CSI
 Plot Scale: 1" = 11'-05" 2015 4:08:49 PM by CSI
 U:\Wichita-Civil\2015\5084\001\Drawings\5084-001-C5-WATERLINE NO. 1



Unless noted otherwise, elevations shown are top of pipe

WATERLINE NO. 1

X = Denotes Tree to be removed



WATERLINE NO. 1

17TH STREET AND OLIVER AVENUE WATERLINE EXTENSIONS
SERVING THE WSU INNOVATION CAMPUS

Designed By: MDK, SAD
 Drawn By: CSL, KTD

Job No.: 35-15084-001-42
 Date: APRIL 2015

PROFESSIONAL ENGINEERING CONSULTANTS P.A.
 303 SOUTH TOPEKA WICHITA, KS 67202
 316-262-2691 www.pec1.com

GARY JANZEN, P.E. - CITY ENGINEER
 CITY OF WICHITA PROJECT NO. 448-90666

Sheet 5 of 17