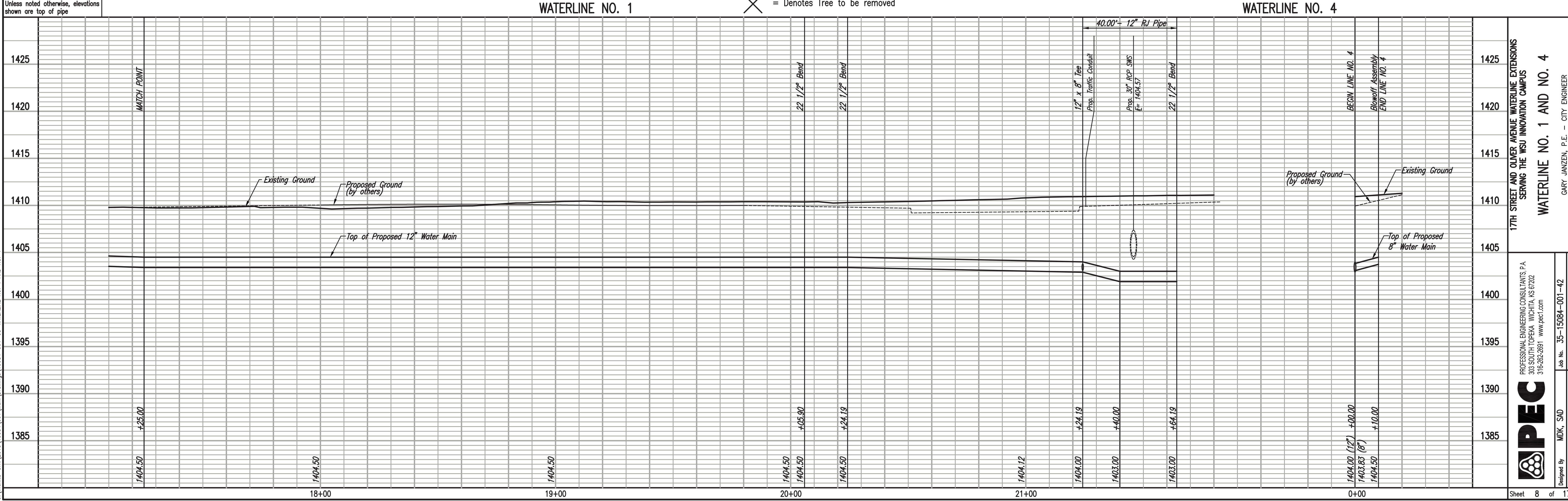
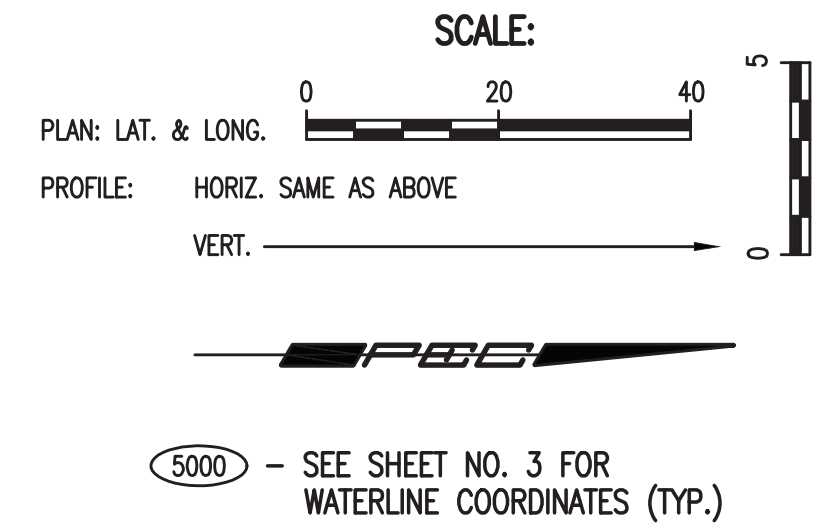
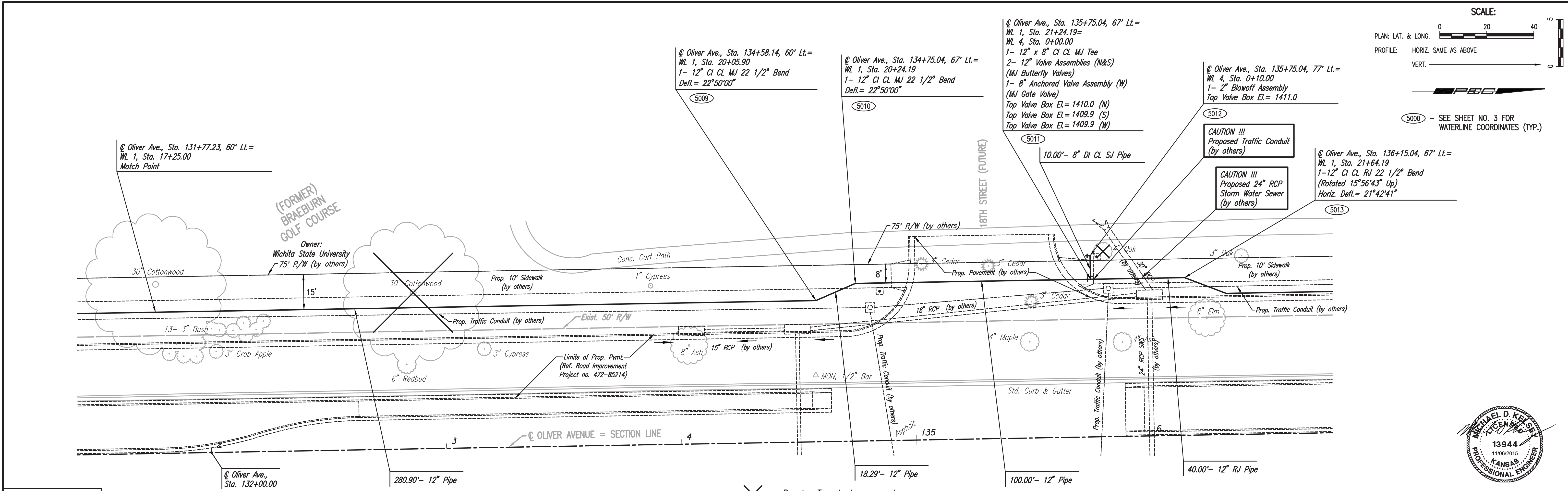


PLAN	CHECKED	DATE
	CHECKED	

PROFILE	CHECKED	DATE
	CHECKED	

Saved: 11-05-2015 4:01:25 PM by CSI  
 Plot Scale: 1" = 11'-05"-2015 4:07:49 PM by CSI  
 U:\Wichita-Civil\2015\50684\001\Drawings\50684-001-CB-WATERLINE NO. 1 AND NO. 4



17TH STREET AND OLIVER AVENUE WATERLINE EXTENSIONS  
 SERVING THE WSU INNOVATION CAMPUS

**WATERLINE NO. 1 AND NO. 4**

PROFESSIONAL ENGINEERING CONSULTANTS P.A.  
 303 SOUTH TOPEKA WICHITA, KS 67202  
 316-262-2691 www.pec1.com

Designed By: MDK, SAD  
 Drawn By: CSL, KTD

Job No. 35-15084-001-42  
 Date: APRIL 2015

GARY JANZEN, P.E. - CITY ENGINEER  
 CITY OF WICHITA PROJECT NO. 448-90666

Sheet 8 of 17