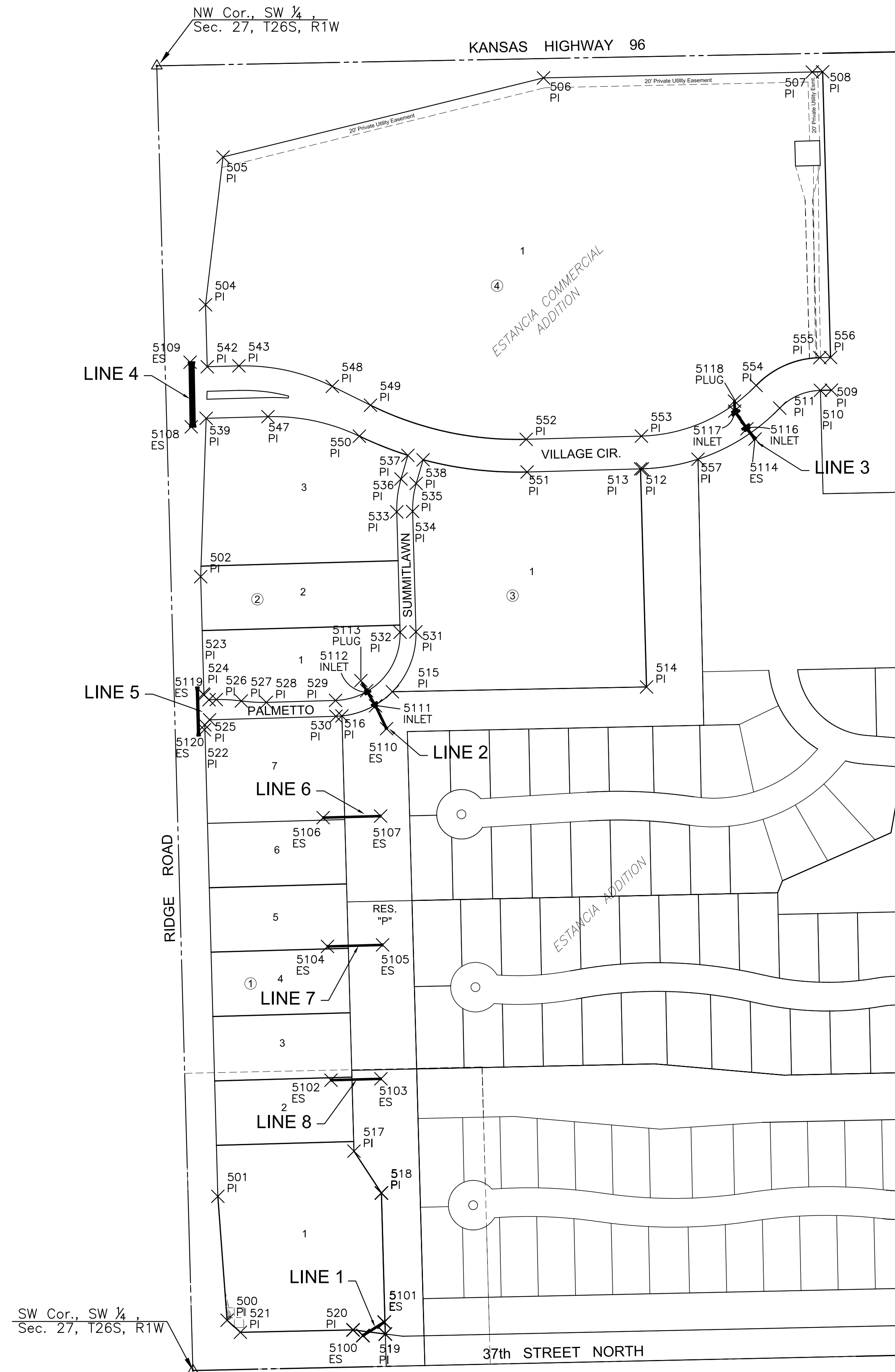


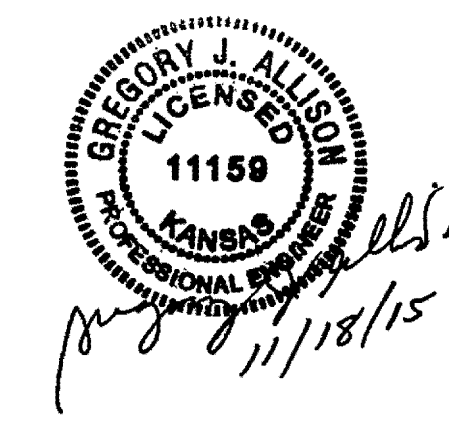
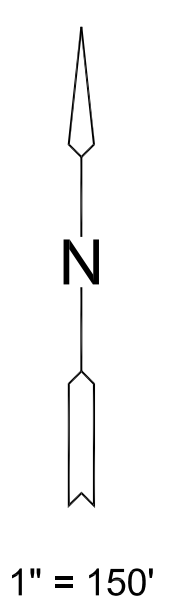
PLOTTED: Wednesday, November 18, 2015 @ 02:57PM

J:\PROJECTS\2014\140101042_PREMIER_ESTANCIA\DWG\CIVIL\CAOS\COMMERCIAL\140101042_BUBBLE.DWG



STORM WATER SEWER POINTS			
Point #	Northing	Easting	Desc.
5100	1709652.19	1623297.34	ES
5101	1709679.25	1623340.33	ES
5102	1710167.57	1623233.00	ES
5103	1710170.35	1623333.66	ES
5104	1710437.47	1623225.82	ES
5105	1710440.55	1623337.07	ES
5106	1710697.33	1623217.14	ES
5107	1710700.54	1623333.09	ES
5108	1711486.06	1622951.08	ES
5109	1711616.43	1622948.70	ES
5110	1710876.86	1623344.99	ES
5111	1710923.05	1623322.75	INLET
5112	1710953.59	1623304.94	INLET
5113	1710973.80	1623293.18	PLUG
5114	1711461.49	1624088.54	ES
5116	1711482.22	1624072.06	INLET
5117	1711517.77	1624047.29	INLET
5118	1711537.96	1624046.92	PLUG
5119	1710947.05	1622975.08	ES
5120	1710874.69	1622977.55	ES

PLAT POINTS			
Point #	Northing	Easting	Desc.
500	1709683.12	1623023.34	PI
501	1709933.18	1623004.69	PI
502	1711183.70	1622970.07	PI
504	1711732.38	1622979.88	PI
505	1712030.60	1623015.17	PI
506	1712190.24	1623661.75	PI
507	1712202.08	1624203.86	PI
508	1712202.55	1624224.76	PI
509	1711560.11	1624242.54	PI
510	1711559.69	1624220.29	PI
511	1711523.83	1624138.18	PI
512	1711401.29	1623860.98	PI
513	1711401.19	1623857.37	PI
514	1710961.11	1623869.55	PI
515	1710951.44	1623356.76	PI
516	1710902.64	1623254.95	PI
517	1710024.33	1623279.27	PI
518	1709939.88	1623334.63	PI
519	1709655.27	1623342.51	PI
520	1709663.60	1623277.53	PI
521	1709658.73	1623050.19	PI
522	1710884.54	1622978.35	PI
523	1710945.02	1622976.67	PI
524	1710935.30	1622986.95	PI
525	1710894.82	1622988.07	PI
526	1710935.71	1623001.62	PI
527	1710932.85	1623052.04	PI
528	1710930.00	1623102.46	PI
529	1710933.86	1623242.08	PI
530	1710901.87	1623242.97	PI
531	1711072.41	1623404.31	PI
532	1711071.52	1623372.32	PI
533	1711314.41	1623365.60	PI
534	1711315.30	1623397.59	PI
535	1711371.84	1623404.85	PI
536	1711380.78	1623374.13	PI
537	1711428.45	1623388.01	PI
538	1711419.50	1623418.74	PI
539	1711503.24	1622981.15	PI
542	1711607.28	1622983.35	PI
543	1711609.05	1623047.21	PI
547	1711506.63	1623105.80	PI
548	1711567.77	1623235.56	PI
549	1711529.65	1623312.66	PI
550	1711467.17	1623290.22	PI
551	1711394.85	1623628.56	PI
552	1711460.83	1623626.73	PI
553	1711467.26	1623859.15	PI
554	1711569.58	1624090.61	PI
555	1711625.68	1624219.05	PI
556	1711626.09	1624240.72	PI
557	1711420.66	1623973.36	PI



EVERY ATTEMPT HAS BEEN MADE TO INSURE ALL COORDINATE VALUES SHOWN ARE AN ACCURATE AND TRUE REPRESENTATION OF THE CURRENT PLANS. ALL VALUES ARE TO BE CONFIRMED WITH THE FINAL SIGNED PLAN SET BEFORE USE.



STORM WATER SEWER PLAN FOR
ESTANCIA COMMERCIAL ADDITION

©2015 MKEC Engineering All Rights Reserved www.mkec.com
These drawings and their contents, including, but not limited to, all concepts, designs, & ideas are the exclusive property of MKEC Engineering (MKEC), and may not be used or reproduced in any way without the express consent of MKEC.

BUBBLE MAP	
PROJECT NO.	468-85068
DATE	NOV. 2015
SCALE	1" = 150'
DESIGNED	DRAWN
DFL	KKL
CHECKED	GJA
NO.	REVISION
	DATE
SHEET NO.	
10 OF 16	