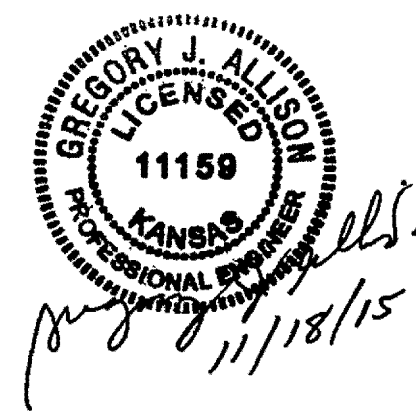
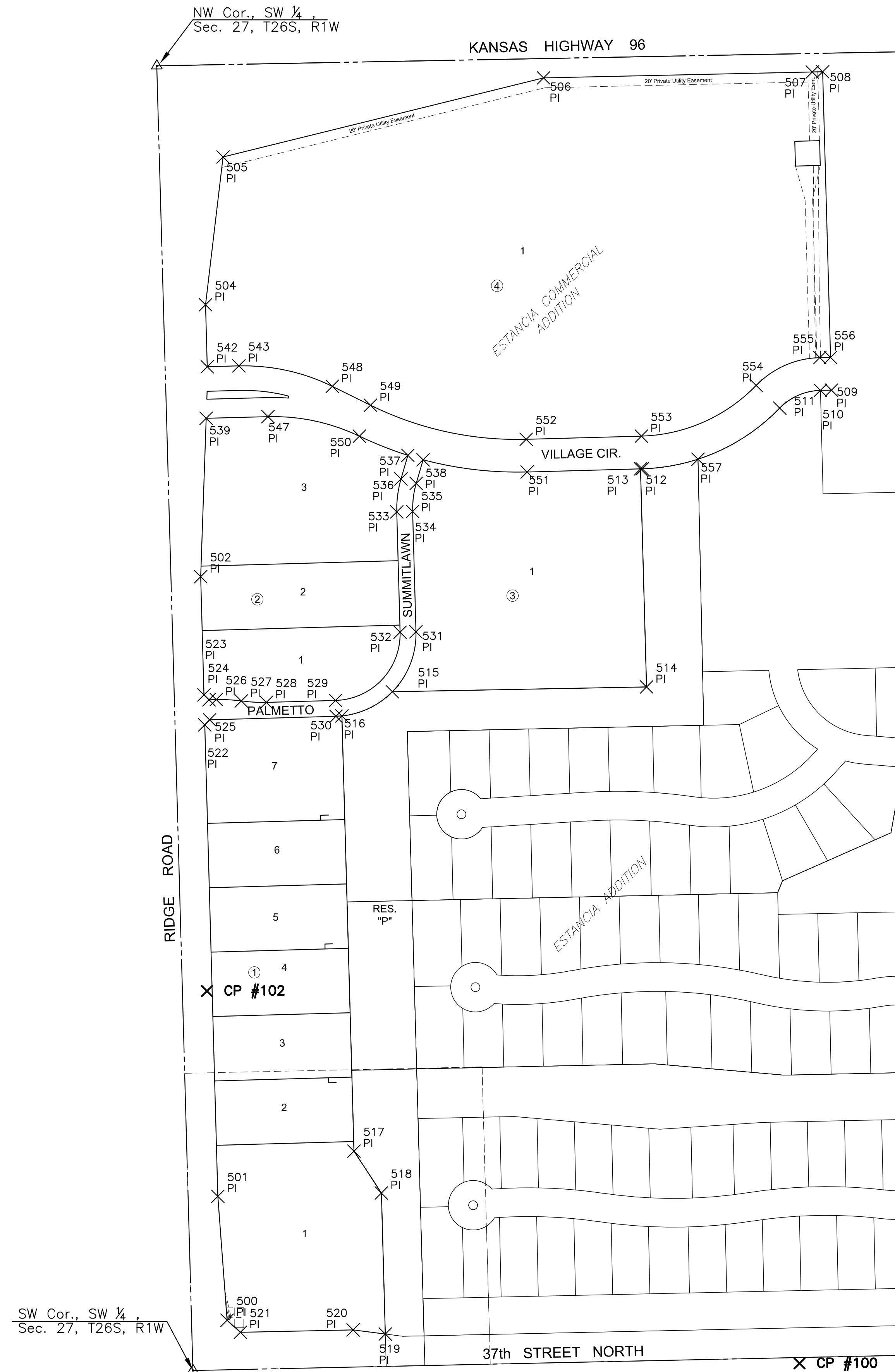


PLOTED: Wednesday, November 18, 2015 @ 12:47PM

J:\PROJECTS\2014\1401010482_PREMIER_ESTANCIA\5-CIVIL\CAD\GRD\14482_BUBBLE_MAP.DWG



CONTROL POINTS

CP #100
5/8" rebar with MKEC Aluminum Cap
N = 1709596.07 E = 1624178.12 Elev. = 1334.38
South side of 37th Street N., West of entrance drive to Mid Kansas Pediatric Association at address 6837 W 37th St N.
36 feet NW of fire hydrant
6 feet south of south edge of asphalt

CP #101
5/8 inch rebar with MKEC Aluminum Cap
N = 1709656.12 E = 1625269.09 Elev. = 1331.35'
North side of 37th St. N
5 feet north of north edge of asphalt
On extended line to the north with the centerline of Ridgeport Street

CP #102
5/8 inch rebar with MKEC Aluminum Cap
N = 1710347.41 E = 1622982.67 Elev. = 1330.50
East Ridge Road in flowline of ditch
45 feet northwest of 3rd powerpole north of 37th Street N

Horizontal and Vertical Datum:

Horizontal Datum: Kansas Coordinate System 1983 South Zone.
(Horizontal coordinates modified to ground using a scale factor of 1.000120014)

Vertical Datum: NAVD 88



1" = 150'

EVERY ATTEMPT HAS BEEN MADE TO INSURE ALL COORDINATE VALUES SHOWN ARE AN ACCURATE AND TRUE REPRESENTATION OF THE CURRENT PLANS. ALL VALUES ARE TO BE CONFIRMED WITH THE FINAL SIGNED PLAN SET BEFORE USE.

PLAT POINTS			
Point #	Northing	Easting	Desc.
500	1709683.12	1623023.34	PI
501	1709933.18	1623004.69	PI
502	1711183.70	1622970.07	PI
504	1711732.38	1622979.88	PI
505	1712030.60	1623015.17	PI
506	1712190.24	1623661.75	PI
507	1712202.08	1624203.86	PI
508	1712202.55	1624224.76	PI
509	1711560.11	1624242.54	PI
510	1711559.69	1624220.29	PI
511	1711523.83	1624138.18	PI
512	1711401.29	1623860.98	PI
513	1711401.19	1623857.37	PI
514	1710961.11	1623869.55	PI
515	1710951.44	1623356.76	PI
516	1710902.64	1623254.95	PI
517	1710024.33	1623279.27	PI
518	1709939.88	1623334.63	PI
519	1709655.27	1623342.51	PI
520	1709663.60	1623277.53	PI
521	1709658.73	1623050.19	PI
522	1710884.54	1622978.35	PI
523	1710945.02	1622976.67	PI
524	1710935.30	1622986.95	PI
525	1710894.82	1622988.07	PI
526	1710935.71	1623001.62	PI
527	1710932.85	1623052.04	PI
528	1710930.00	1623102.46	PI
529	1710933.86	1623242.08	PI
530	1710901.87	1623242.97	PI
531	1711072.41	1623404.31	PI
532	1711071.52	1623372.32	PI
533	1711314.41	1623365.60	PI
534	1711315.30	1623397.59	PI
535	1711371.84	1623404.85	PI
536	1711380.78	1623374.13	PI
537	1711428.45	1623388.01	PI
538	1711419.50	1623418.74	PI
539	1711503.24	1622981.15	PI
542	1711607.28	1622983.35	PI
543	1711609.05	1623047.21	PI
547	1711506.63	1623105.80	PI
548	1711567.77	1623235.56	PI
549	1711529.65	1623312.66	PI
550	1711467.17	1623290.22	PI
551	1711394.85	1623628.56	PI
552	1711460.83	1623626.73	PI
553	1711467.26	1623859.15	PI
554	1711569.58	1624090.61	PI
555	1711625.68	1624219.05	PI
556	1711626.09	1624240.72	PI
557	1711420.66	1623973.36	PI



STORMWATER DRAIN #405

ESTANCIA ADDITION

©2015 MKEC Engineering All Rights Reserved
www.mkec.com
These drawings and their contents, including, but not limited to, all concepts, designs, & ideas are the exclusive property of MKEC Engineering (MKEC), and may not be used or reproduced in any way without the express consent of MKEC.

BUBBLE MAP (COMMERCIAL)

PROJECT NO.	468-85070
DATE	NOV. 2015
SCALE	1" = 150'
DESIGNED	ABC
DRAWN	MLP
CHECKED	ABC

NO.	REVISION	DATE

SHEET NO.