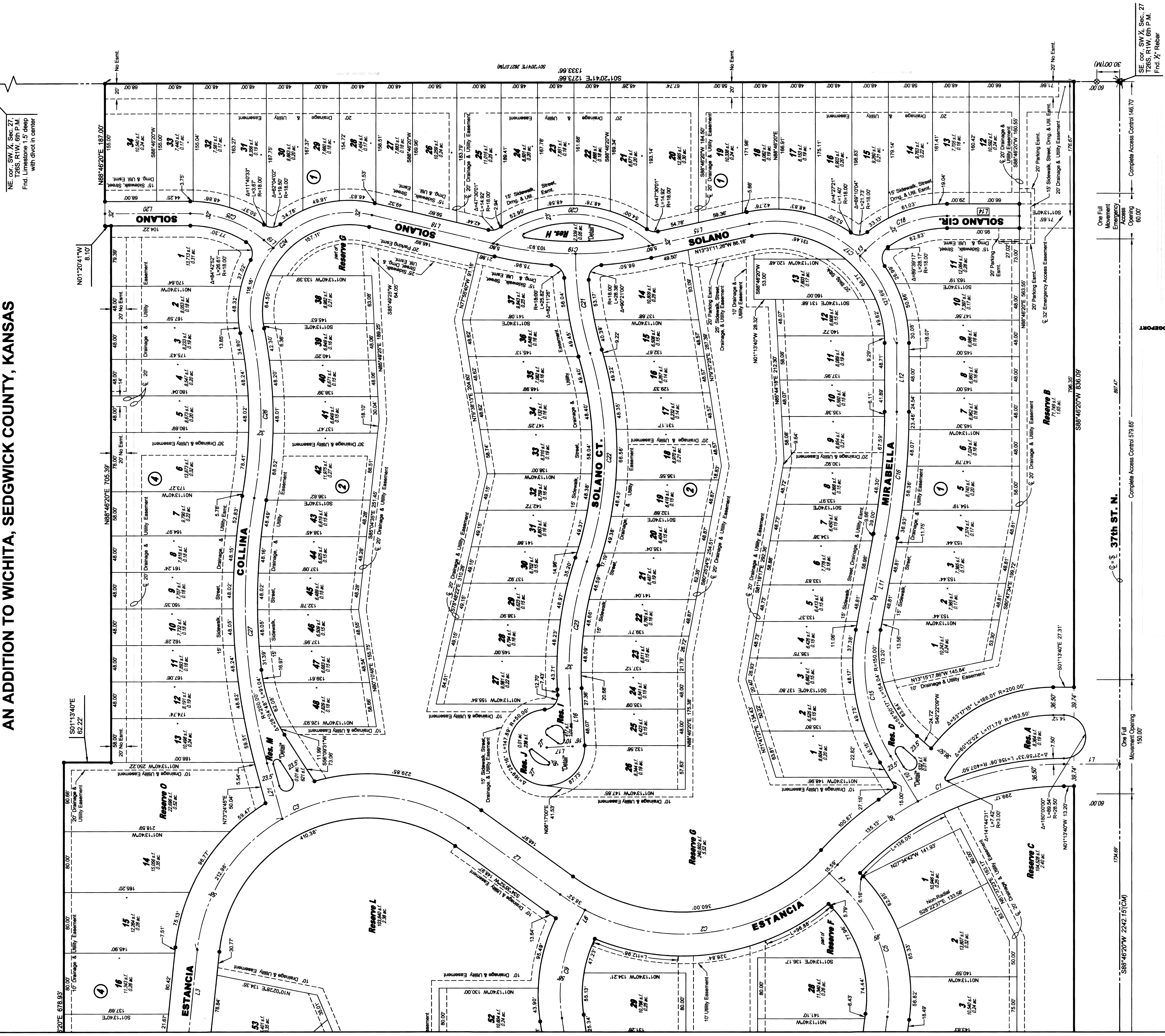


FINAL PLAT

ESTANCIA ADDITION

AN ADDITION TO WICHITA, SEDGWICK COUNTY, KANSAS

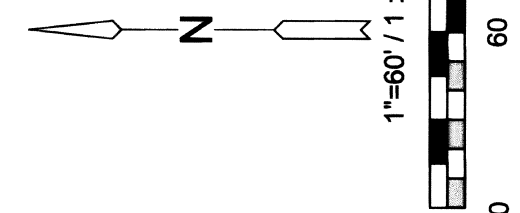


NE 1/4 SW 1/4 Sec. 27, T26S R1W, S1/2M, Find Limestone 1.5' deep with diavel in center

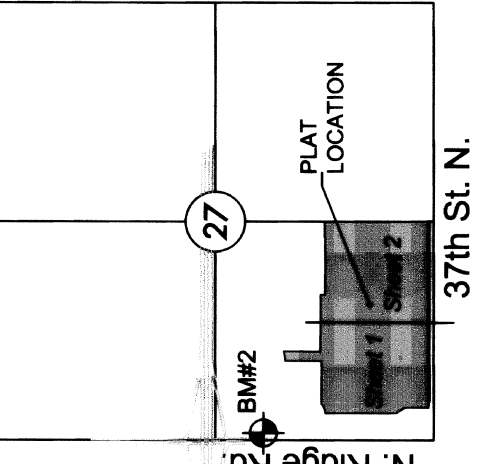
SE cor., SW 1/4, Sec. 27, T26S, R1W, 6th P.M. Frd. 1/2 Rebar

LEGEND
Date of Survey: April 23, 2015

- △ = Section corner monument found
- ⊙ = Found 3/4 rebar w/ MKEC CLS 39 ft. cap
- ⊙ = Set 3/4 rebar w/ MKEC CLS 39 ft. cap
- (M) = Measured
- (CM) = Calculated from measured
- (D) = Described
- ⊕ = Benchmark
- U.E. = Utility Easement
- D.E. = Drainage Easement



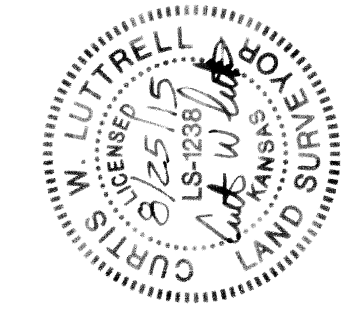
8.11W
45th St. N.



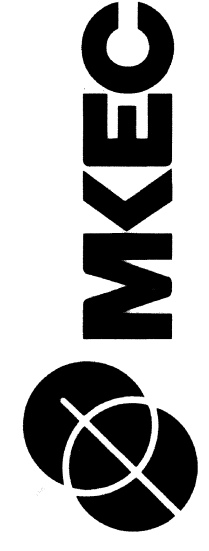
MINIMUM PAD ELEVATIONS (LOWEST AREAS)	LOTS	BLOCK ELEVATION	MWD REF
	1-48	2	1334.1
	5, 6, 13, 14	4	1334.1

BENCHMARK
Square cut top of curb on west side of median island and 10 feet north of the south end of said median lying south of K-96 and Ridge Rd. being 338 feet S. of the NW corner SW 1/4, Sec. 27, T26S, R1W, 6th P.M.) Elev. = 1335.00 NAVD83

Basis of Bearing: Kansas coordinate system of 1983 south zone grid bearing of N88°46'20"E on the south of the SW 1/4, Sec. 27, T26S, R1W, 6th P.M.
This plat is surveyed and platted on NAD83 using Kansas state plane south zone coordinates, modified to the surface, having a combined adjustment scale factor of 1.000120014401728



VICINITY MAP



Wichita, KS • 316.684.9600