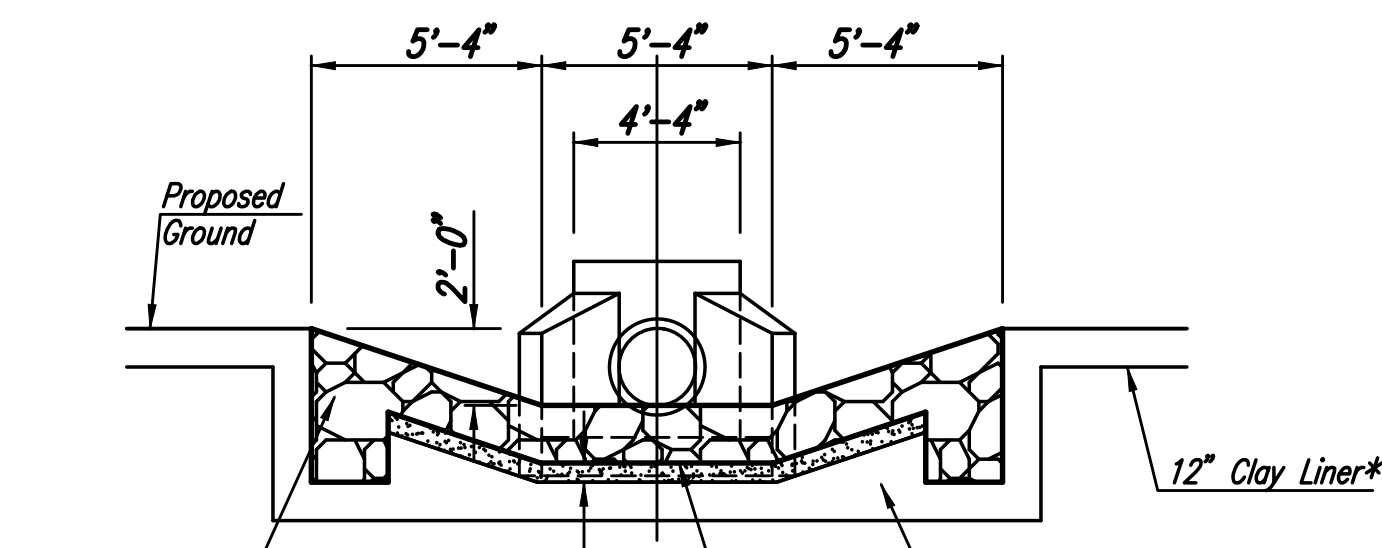
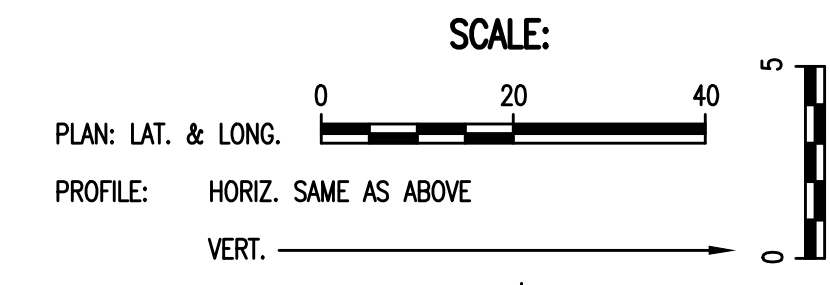


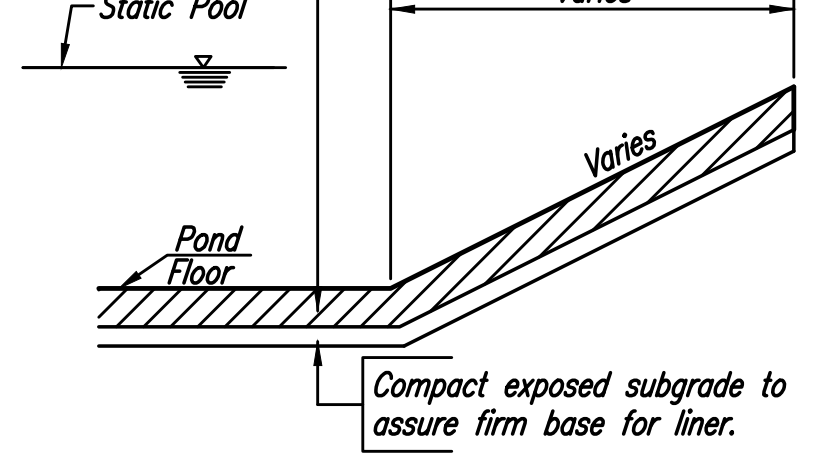
|      |         |         |    |      |
|------|---------|---------|----|------|
| PLAN | CHECKED | CHECKED | BY | DATE |
|------|---------|---------|----|------|

|         |         |         |    |      |
|---------|---------|---------|----|------|
| PROFILE | CHECKED | CHECKED | BY | DATE |
|---------|---------|---------|----|------|



**SECTION A-A** \* Clay Liner Shall Meet the Same Requirements as Pond Lining.

1. Construct 12 inches of clay liner.
2. High plasticity clay (PI>25) shall be used.
3. Construct liner in two 6-inch lifts.
4. Compact to 95% of Standard Proctor Density (ASTM D-698).
5. Control moisture within minus 3% to plus 3% of optimum moisture content.



**CLAY LINER CONSTRUCTION PROCEDURE FOR POND SEALING**

\* THE TRENCH ZONE INDICATED SHALL BE BACKFILLED ENTIRELY WITH CLAY MATERIAL MEETING THE SAME REQUIREMENTS AS POND LINING. NO GRANULAR BACKFILL WILL BE ALLOWED IN THIS AREA, EXCEPT THAT THE TOP 4" OF BACKFILL SHALL BE ON-SITE TOPSOIL. ANY COSTS ASSOCIATED WITH THIS WORK SHALL BE SUBSIDIARY TO THE PRICE BID FOR 24" HEADWALL.

Sta. 9+29.6 SWS Line No. 1  
Install 24" Headwall  
Install 70.4 L.F. 24" RCP (NE)  
First 2 Sections of RCP Pipe  
Shall have Restraining Joints  
See Sheet Nos. 15 and 16.

| COORDINATE LIST |             |             |
|-----------------|-------------|-------------|
| POINT           | NORTH       | EAST        |
| 7100            | 26,118.9124 | 17,858.1451 |
| 7101            | 26,155.2906 | 17,918.3763 |
| 7102            | 26,155.5469 | 17,919.8542 |
| 7103            | 26,163.1240 | 17,963.5420 |
| 7104            | 26,163.3804 | 17,965.0199 |

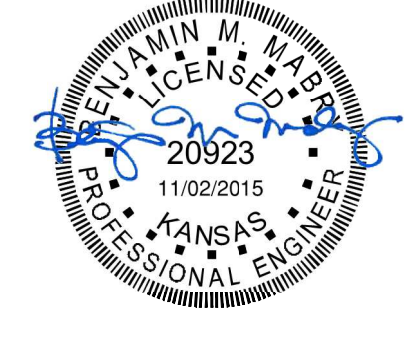
(7100) = COORDINATE POINT NO.  
SEE SHEET NO. 28 FOR PLAT COORDINATES

Install 45 S.Y.  
Light Stone Riprap  
See Sheet No. 16.

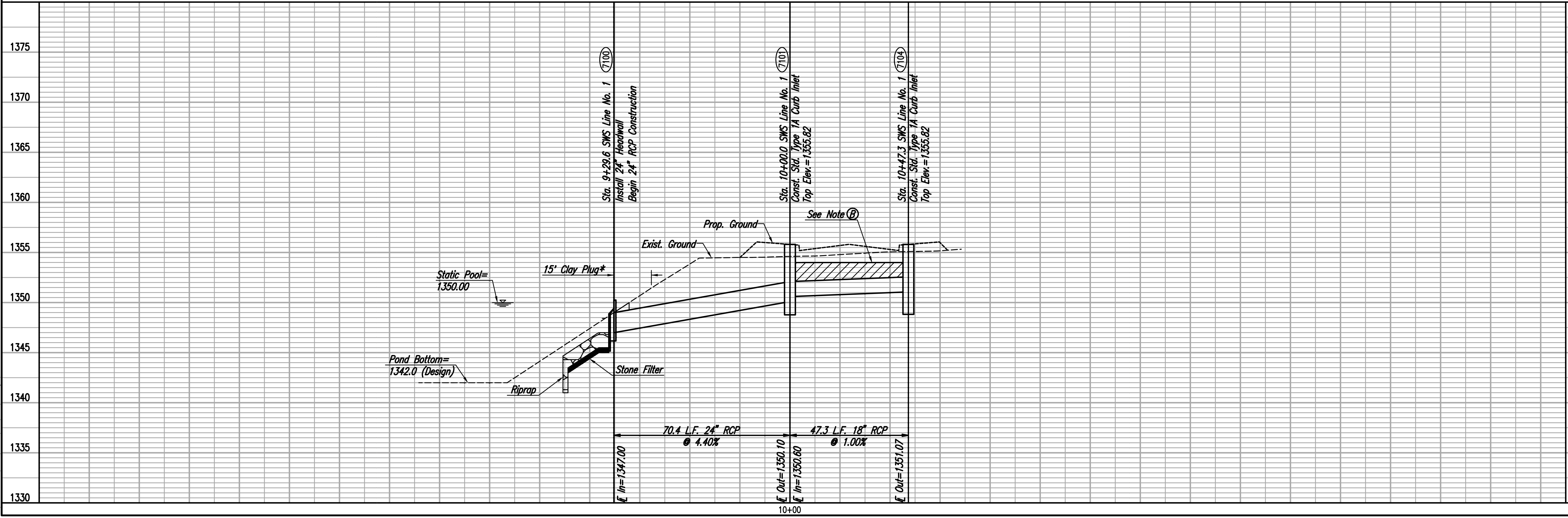
Sta. 10+00.0 SWS Line No. 1 =  
CL Parkdale Cir. Sta. 19+56.10, 23.67' Lt.  
Const. Std. Type 1A Curb Inlet  
L=10'-0", W=3'-0"  
Top Elev.=1355.82  
Install 47.3 L.F. 18" RCP (ENE)  
See Note (B)  
See Sheet No. 12.

Note (A): Construct Suitable Cofferdam and/or Dewater as Necessary to Construct 24" Headwall. Cofferdam may be of Compacted Earth Material or Sheet Piles. Upon Completion of Drainage Improvements, Remove Cofferdam and Restore Pond Banks to Pre-Construction Condition. This work shall be Subsidiary to "24" Headwall".

Note (B): ALL STORM SEWER EXCAVATION UNDER PAVEMENT SHALL BE SAND FILLED AND FLUSHED (JETTED AND VIBRATED) WITH WATER PER THE REQUIREMENTS LISTED IN THE STANDARD SPECIFICATIONS FOR THE CITY OF WICHITA. THE SAND FILL SHALL START AT THE TOP OF IMPROVED BEDDING (PER STANDARD SPECIFICATIONS) AND BE BROUGHT UP UNIFORMLY TO AN ELEVATION 12 INCHES ABOVE THE TOP OF PIPE OR 2 FEET BELOW THE BOTTOM OF PROPOSED PAVEMENT, WHICHEVER IS HIGHER. HOWEVER, IN NO INSTANCE SHALL THE SAND FILL BE BROUGHT UP TO LESS THAN 6 INCHES BELOW THE PAVEMENT SUB-BASE MATERIAL. STORM SEWER ADJACENT TO THE BACK OF CURB ALSO BE SAND FILLED PER THIS PROVISION, TO WITHIN 2 FEET OF FINAL GRADE.



Saved: 10-30-2015 12:31:37 PM by: RFT  
Plot Scale: 1:11-02-2015 9:05:56 AM by: RFT  
U:\Wichita-Civil\2015\15120\001\Drawings\15120-001-11C-PLAN AND PROFILE-SWS LINE NO. 1



NEWMARKET OFFICE 2ND-PHASE 2  
PAVING AND INCIDENTAL DRAINAGE IMPROVEMENTS  
**SWS LINE NO. 1**

**PEC**  
PROFESSIONAL ENGINEERING CONSULTANTS P.A.  
303 SOUTH TOPEKA WICHITA, KS 67202  
316-262-2691 www.pec1.com

Designed By: BMM, TBK  
Drawn By: BUS

Job No.: 35-15120-001  
Date: November 2015