

NOTE: ZONES 12-14 ARE EXISTING. THE CONTRACTOR SHALL CONNECT TO THE EXISTING VALVE AND MAKE ADJUSTMENTS AS NECESSARY.

ZONE 12	1804-PRS-15Q = 4 NEW + 2 EXISTING TO REMAIN 1804-PRS-15H = 22 NEW + 4 EXISTING TO REMAIN EXISTING VALVE
21.7 GPM	1 1/2" VALVE

ZONE 14	1804-PRS-08Q = 4 NEW + 3 EXISTING 1804-PRS-08H = 28 NEW + 2 EXISTING EXISTING VALVE
17.4 GPM	1 1/2" VALVE

ZONE 16	1806-PRS-08H = 12 1806-PRS-08F = 5
11.5 GPM	1" VALVE

ZONE 18	1804-PRS-08Q = 2 1804-PRS-08H = 56
29.6 GPM	1 1/2" VALVE
(1 1/2" LATERAL)	

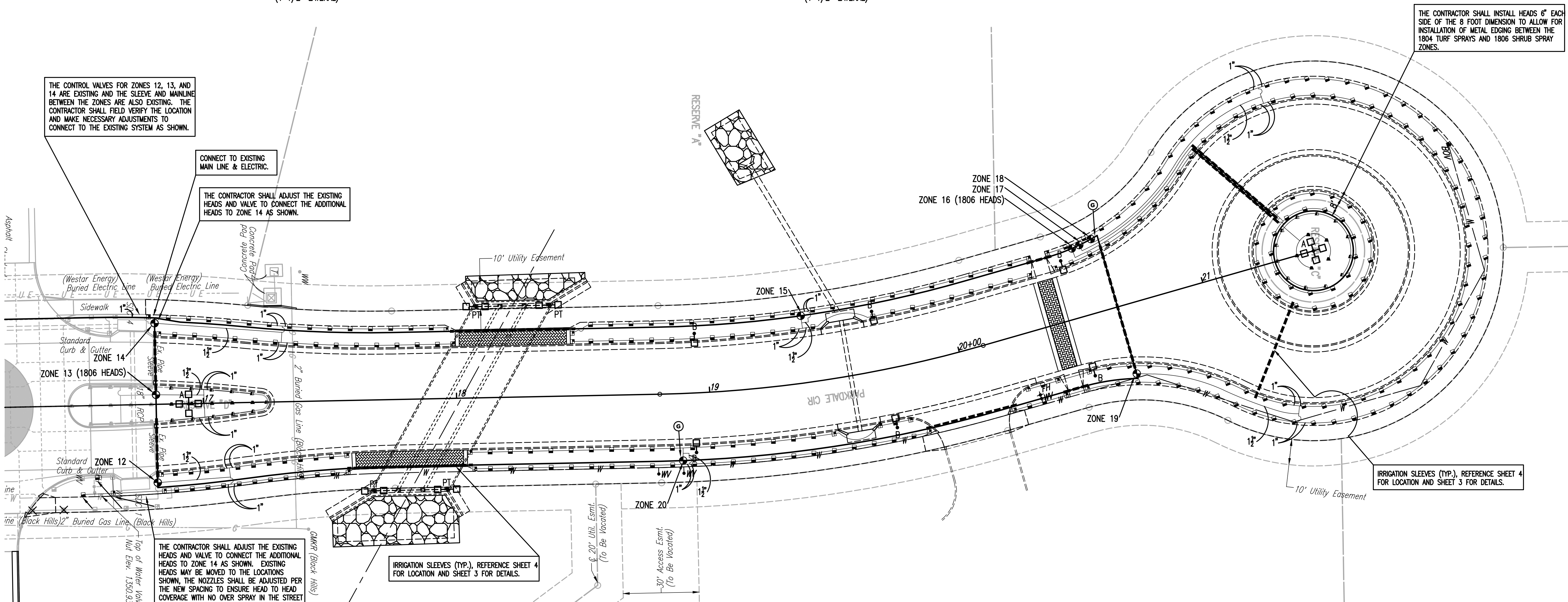
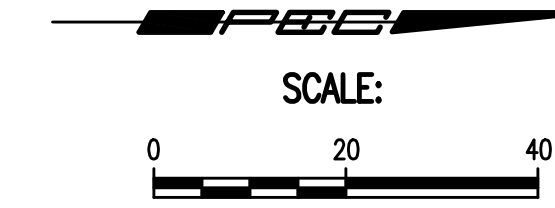
ZONE 20	1804-PRS-08Q = 6 1804-PRS-08H = 40
22.4 GPM	1 1/2" VALVE
(1 1/2" LATERAL)	

ZONE 13	1806-PRS-08Q = 1 NEW + 2 EXISTING 1806-PRS-08H = 10 NEW + 8 EXISTING 1806-PRS-08F = 5 NEW + 3 EXISTING EXISTING VALVE
18.6 GPM	1" VALVE

ZONE 15	1804-PRS-08Q = 4 1804-PRS-08H = 42
22.9 GPM	1 1/2" VALVE
(1 1/2" LATERAL)	

ZONE 17	1804-PRS-15H = 31
16.2 GPM	1" VALVE

ZONE 19	1804-PRS-08Q = 6 1804-PRS-08H = 51
28.1 GPM	1 1/2" VALVE
(1 1/2" LATERAL)	



IRRIGATION QUANTITIES (FOR INFORMATION ONLY)

THE LUMP SUM BID ITEM FOR "IRRIGATION SYSTEM" SHALL INCLUDE THE FOLLOWING ITEMS ALONG WITH INCIDENTAL ITEMS NECESSARY FOR THE SYSTEM (INCLUDING FITTINGS, GRAVEL, ETC.):

SYMBOL	ITEM	QUANTITY	UNITS	NOTES
—	2" PVC MAIN LINE	830	LF	SCHEDULE 40 PVC
—	2-WIRE CONTROL WIRE	850	LF	14 GA. MAXI-COM WITH MAIN LINE.
—	SLEEVES			REFERENCE PAVING PLAN SHEET 4 FOR IRRIGATION SLEEVES
■	1804-PRS TURF SPRAYS	296	EA.	RAINBIRD 1804-PRS SPRAY HEADS OR APPROVED EQUAL.
▲	1806-PRS SHRUB SPRAYS	33	EA.	RAINBIRD 1806-PRS SPRAY HEADS OR APPROVED EQUAL.
□	IRRIGATION CONTROLLER	0	EA.	EXISTING.
◇	RAIN SENSOR	0	EA.	EXISTING.
Ⓜ	METER	0	EA.	EXISTING.
Ⓢ	8" GROUND RODS	2	EA.	
Ⓟ	PRESSURE RELIEF VALVE	0	EA.	EXISTING.
Ⓟ	BLOW OUT	0	EA.	EXISTING.
Ⓟ	1" CONTROL VALVE	2	EA.	WITH DECODER : SIZE NOTED IN ZONE DESCRIPTION BOX ON PLAN.
Ⓟ	1 1/2" CONTROL VALVE	4	EA.	WITH DECODER : SIZE NOTED IN ZONE DESCRIPTION BOX ON PLAN.
Ⓟ	2" CONTROL VALVE	0	EA.	
Ⓟ	10" ROUND VALVE BOX	6	EA.	ONE CONTROL VALVE PER BOX
Ⓟ	"JUMBO VALVE BOX"	0	EA.	
—	1" LATERAL PIPE	2275	LF	AS SHOWN ON PLAN AND PER PIPE FLOW CHART IN SPECIFICATIONS.
—	1 1/2" LATERAL PIPE	225	LF	AS SHOWN ON PLAN AND PER PIPE FLOW CHART IN SPECIFICATIONS.
—	2" LATERAL PIPE	0	LF	

NOTES:

1. THE IRRIGATION CONTRACTOR SHALL COORDINATE INSTALLATION OF SLEEVES SHOWN ON THE PAVING PLAN WITH THE GENERAL CONTRACTOR.
2. USE CAUTION WHEN NEAR OR CROSSING STORM SEWER LINES, WATERLINES, ELECTRICAL SERVICE AND LIGHTING LINES.
3. REFERENCE THE ELECTRICAL PLANS FOR PROPOSED LIGHT POLES AND ELECTRICAL DETAILS.
4. THE CONTRACTOR IS RESPONSIBLE FOR TYING INTO THE EXISTING SYSTEM AND FOR ANY NECESSARY FILED LOCATION, SHUT DOWN, OR UPGRADES ASSOCIATED WITH ADDING THE NEW IRRIGATION COMPONENTS TO THE EXISTING SYSTEM.
5. REFERENCE SHEET 25 FOR FESCUE SOD INSTALLATION LOCATIONS.

IRRIGATION SLEEVES (TYP.), REFERENCE SHEET 4 FOR LOCATION AND SHEET 3 FOR DETAILS.

THE CONTROL VALVES FOR ZONES 12, 13, AND 14 ARE EXISTING AND THE SLEEVE AND MAINLINE BETWEEN THE ZONES ARE ALSO EXISTING. THE CONTRACTOR SHALL FIELD VERIFY THE LOCATION AND MAKE NECESSARY ADJUSTMENTS TO CONNECT TO THE EXISTING SYSTEM AS SHOWN.

CONNECT TO EXISTING MAIN LINE & ELECTRIC.

THE CONTRACTOR SHALL ADJUST THE EXISTING HEADS AND VALVE TO CONNECT THE ADDITIONAL HEADS TO ZONE 14 AS SHOWN.

THE CONTRACTOR SHALL ADJUST THE EXISTING HEADS AND VALVE TO CONNECT THE ADDITIONAL HEADS TO ZONE 14 AS SHOWN. EXISTING HEADS MAY BE MOVED TO THE LOCATIONS SHOWN. THE NOZZLES SHALL BE ADJUSTED PER THE NEW SPACING TO ENSURE HEAD TO HEAD COVERAGE WITH NO OVER SPRAY IN THE STREET OR SIDEWALK.

IRRIGATION SLEEVES (TYP.), REFERENCE SHEET 4 FOR LOCATION AND SHEET 3 FOR DETAILS.

THE CONTRACTOR SHALL INSTALL HEADS 6" EACH SIDE OF THE 8 FOOT DIMENSION TO ALLOW FOR INSTALLATION OF METAL EDGING BETWEEN THE 1804 TURF SPRAYS AND 1806 SHRUB SPRAY ZONES.

Scaled 10'-30"-2015 12:45:20 PM by BJT
 Plot Scale 1:1 11-02-2015 9:09:31 AM by RET
 U:\Wichita-Civil\2015\15120\001\Drawings\15120-001-26C-IRRIGATION PLAN-PARKDALE CIRCLE

No.	Revision	By	Date

IRRIGATION PLAN-PARKDALE CIRCLE

GARY JANZEN, P.E. - CITY ENGINEER
CITY OF WICHITA PROJECT NO. 472-84991

PEC PROFESSIONAL ENGINEERING CONSULTANTS, P.A.
303 SOUTH TOPEKA WICHITA, KS 67202
316-262-2691 www.pec1.com

Designed by BMM, TBK

Drawn by BJS

Job No. 35-15120-001

Date November 2015

Sht. 26 of 36