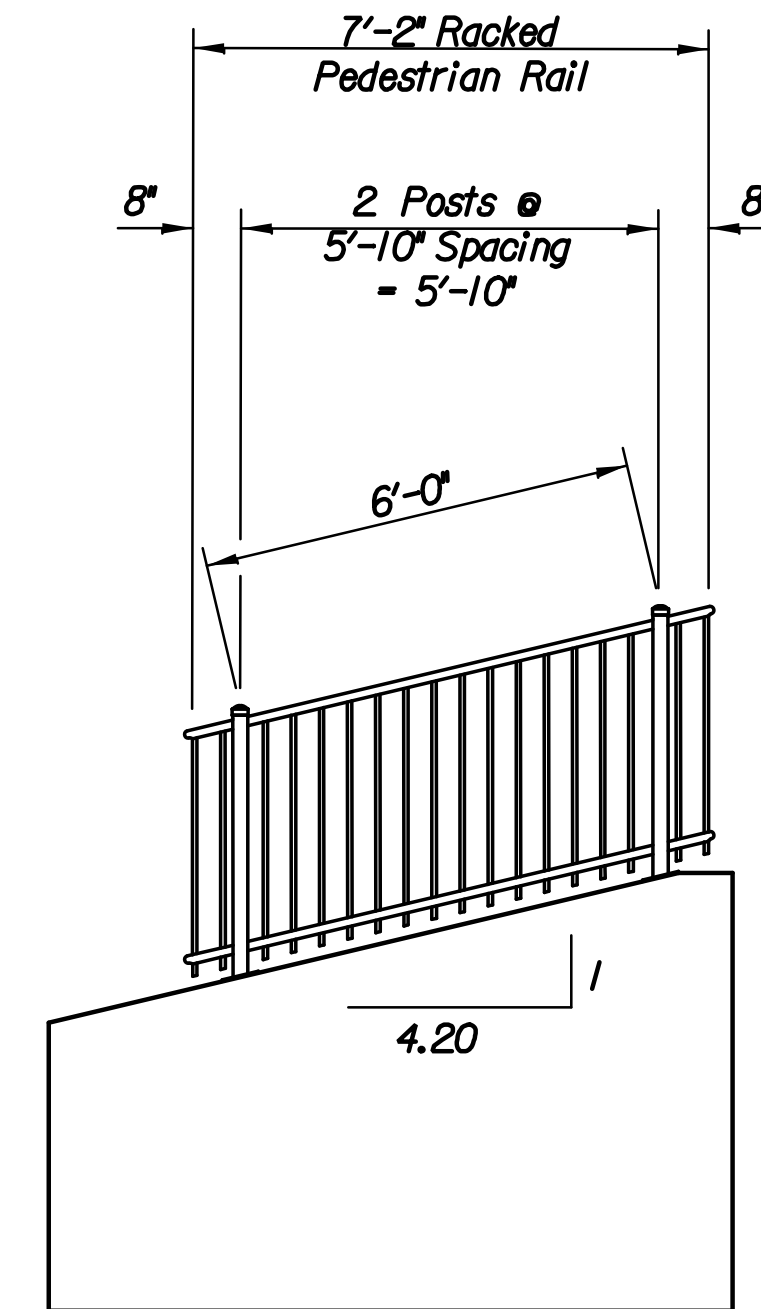
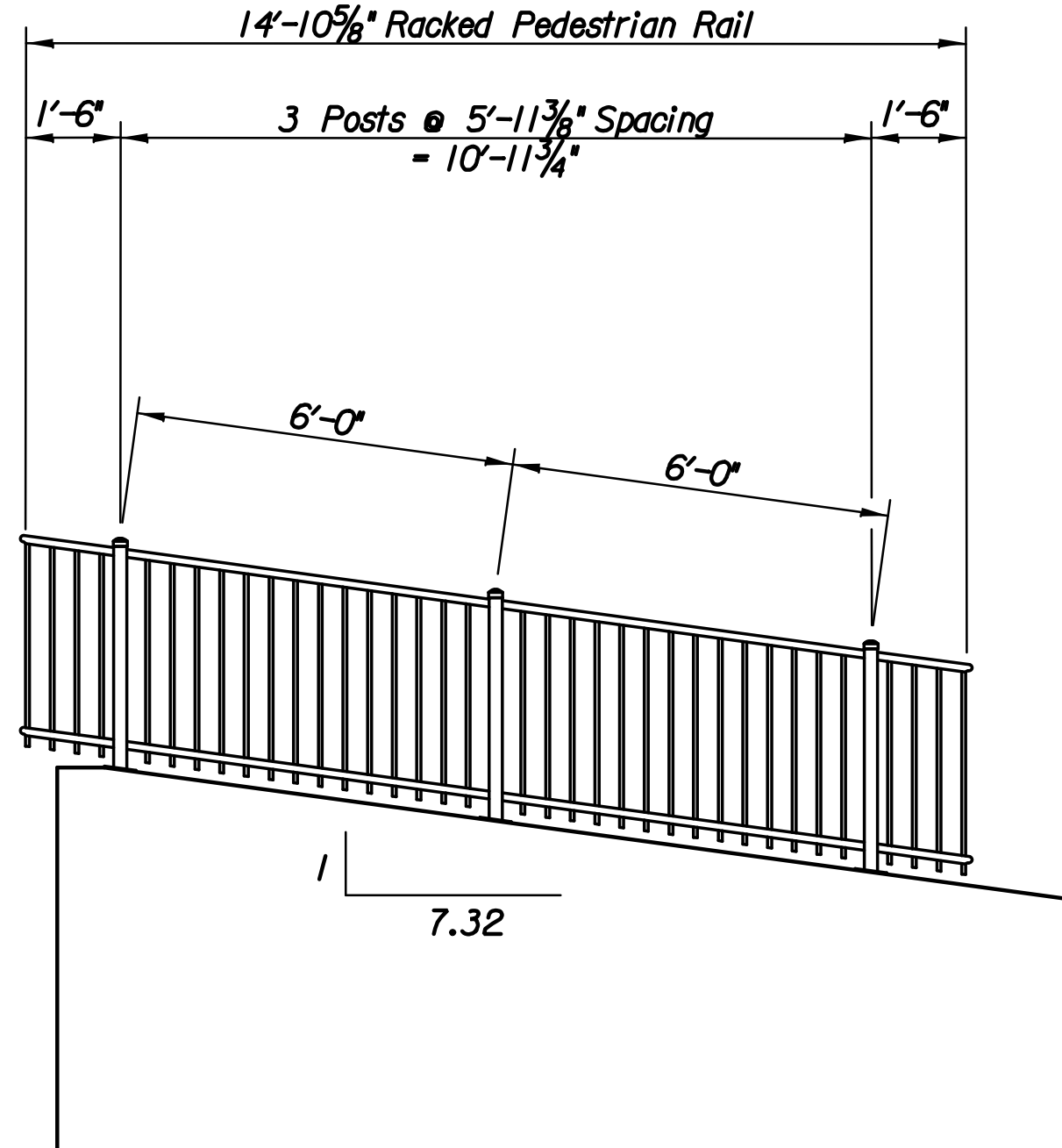


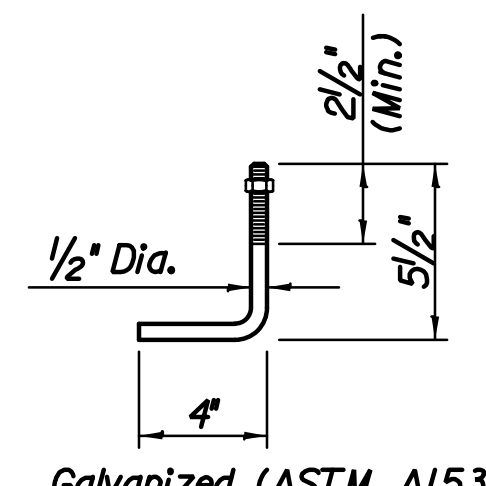
SLAB PLAN



SOUTHWEST WING ELEVATION



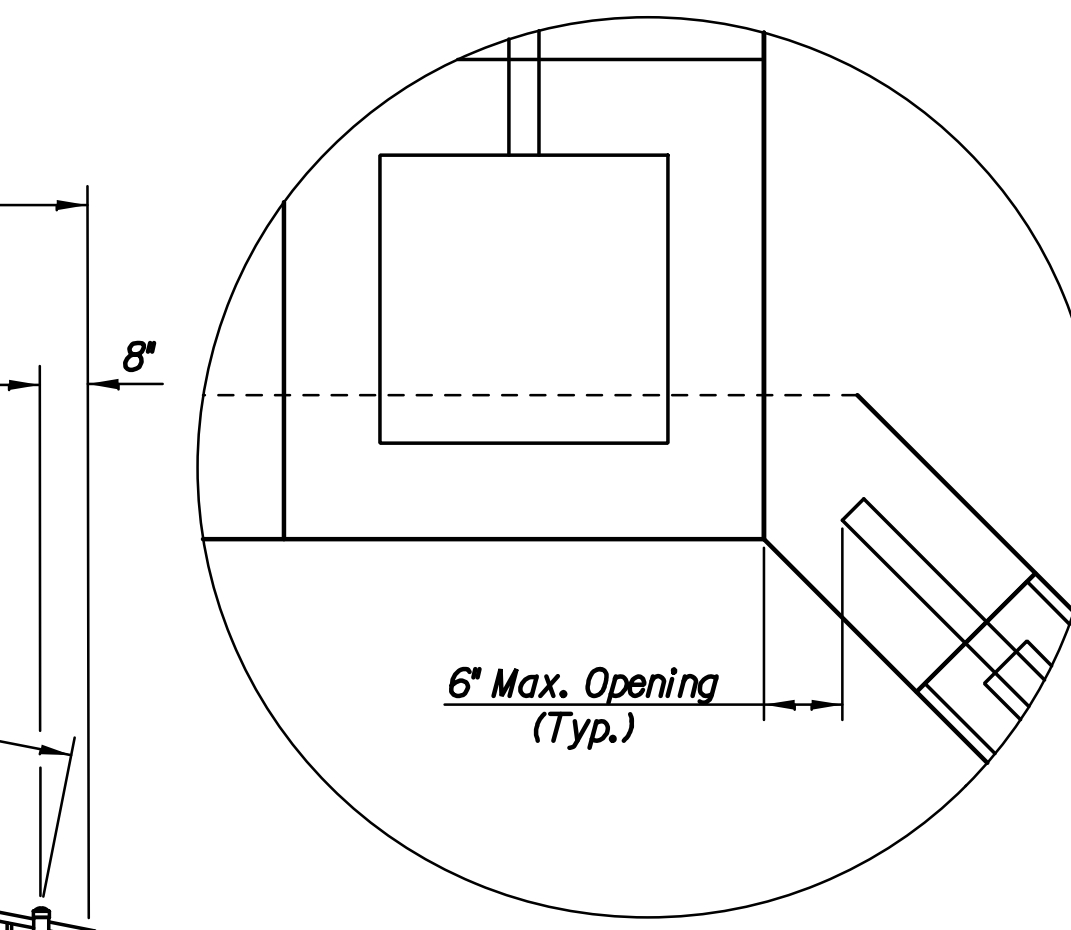
NORTHWEST WING ELEVATION



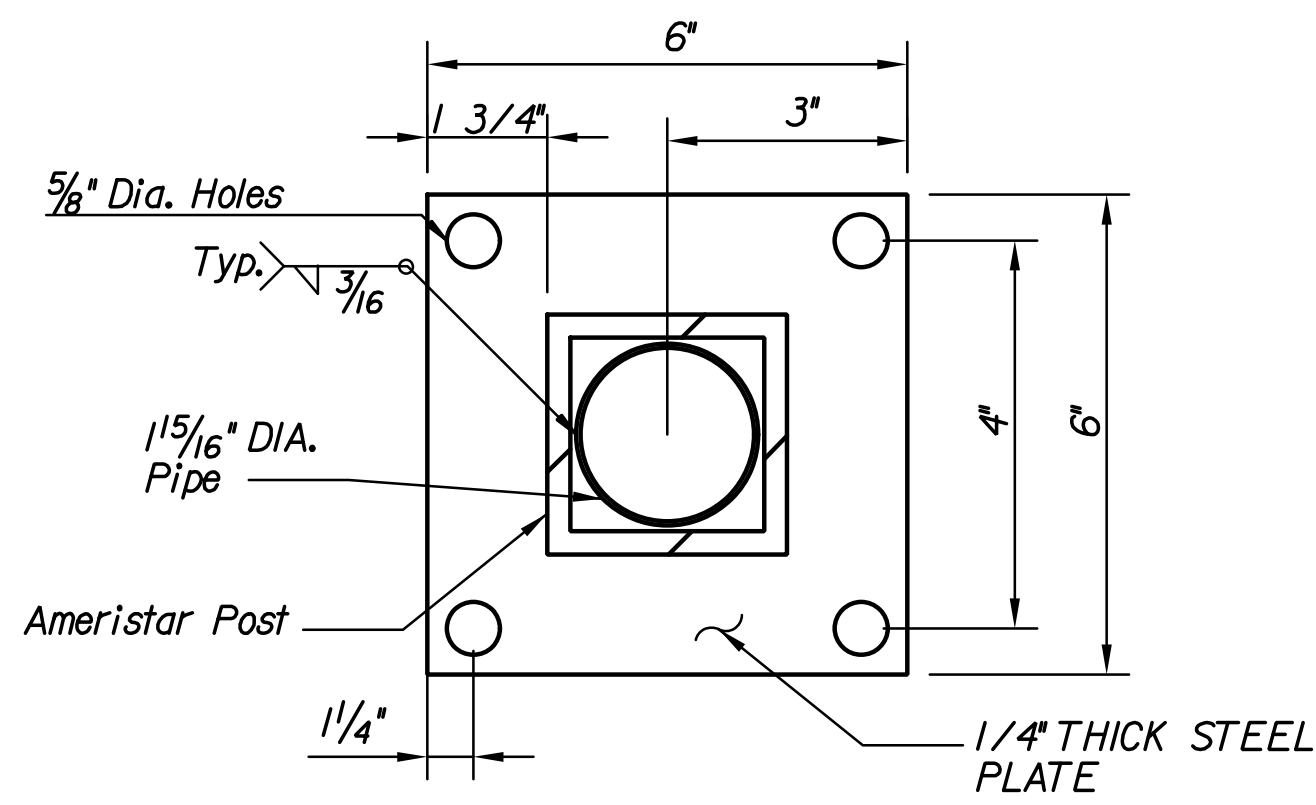
Galvanized (ASTM A153)
(May substitute expandable anchor bolts when approved by the Engineer)

ANCHOR BOLT

(Orient to provide min. 2" edge clearance to either hubguard face or adjacent bolts)



DETAIL A

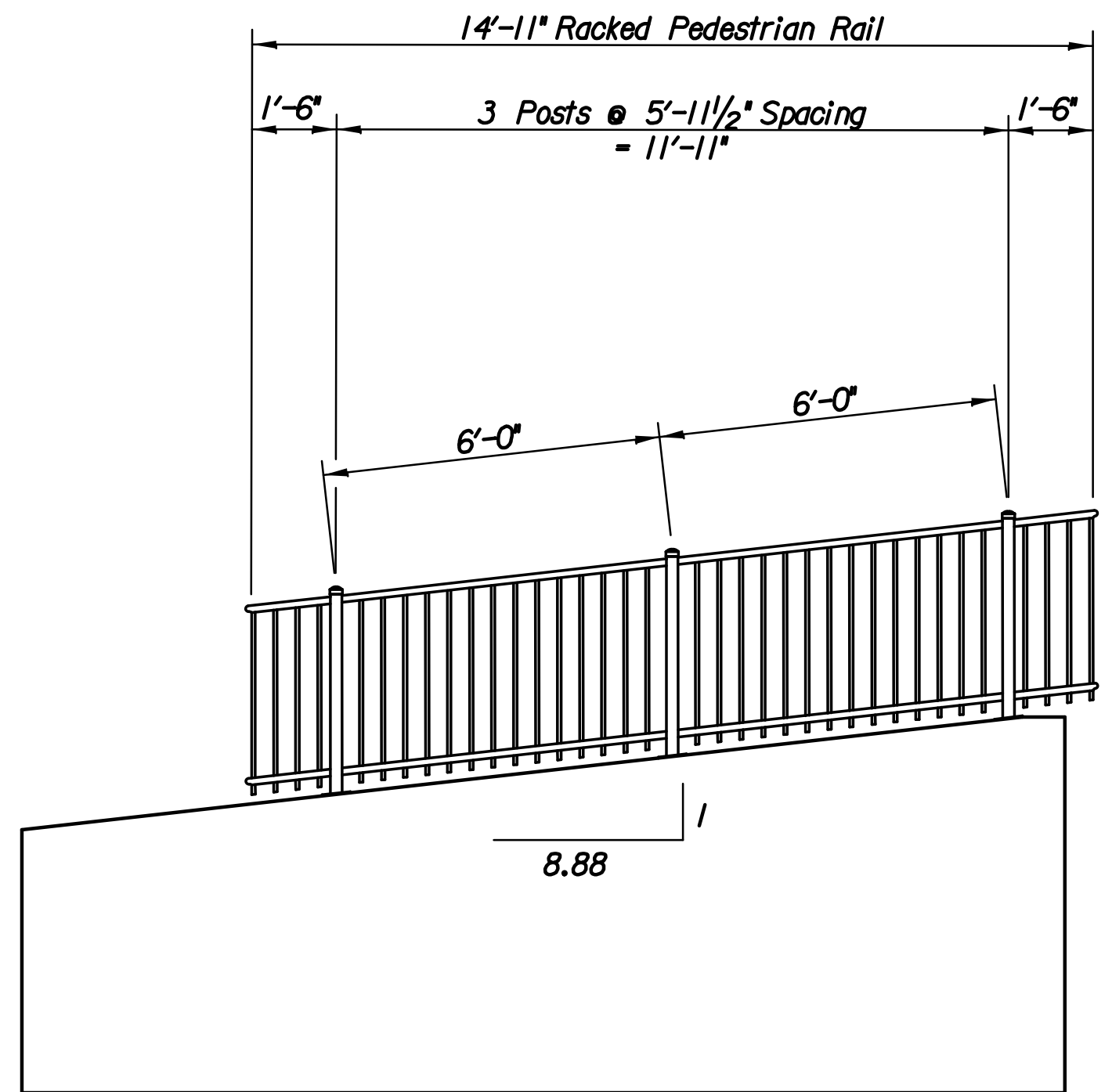


BASE PLATE DETAIL
10 Required

GENERAL NOTES

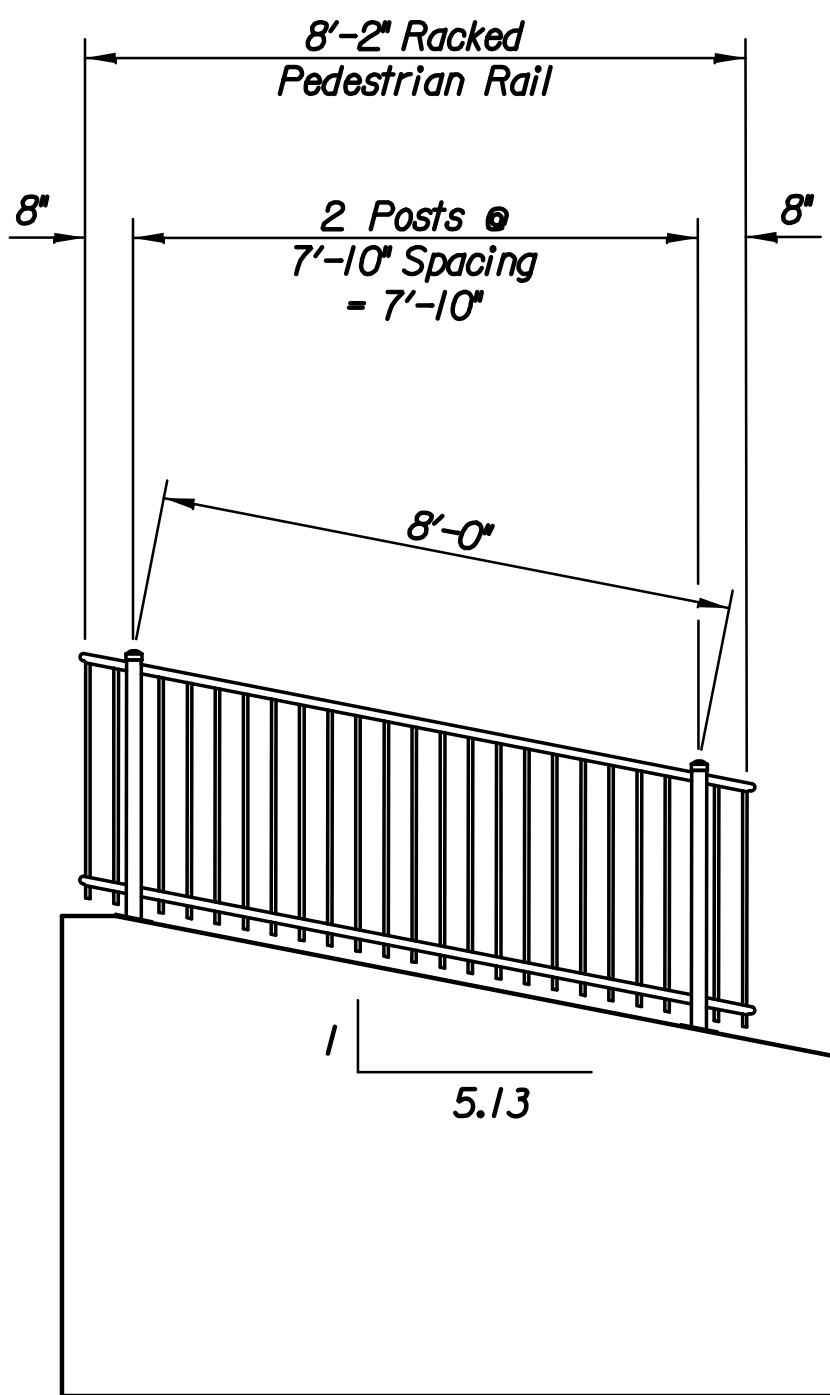
- BRIDGE RAIL SHALL BE AMERISTAR MONTAGE PLUS MAJESTIC RAIL WITH A HEIGHT OF 3'-6".
- RAIL SHALL BE FABRICATED IN LENGTHS AS SHOWN.
- POSTS AND BARS SHALL BE SET VERTICAL AND SHIMMED IF REQUIRED.
- PRIOR TO PAINTING ABRASIVE BLAST TO COMMERCIAL FINISH SSPC-SP6 TO OBTAIN A SURFACE PROFILE OF 1 1/2 MILS. THE SHOP AND FIELD COATS APPLIED TO STRUCTURAL STEEL SHALL CONFORM TO AN INORGANIC ZINC PRIMER WITH A WATER-BORNE ACRYLIC FINISH COAT. (THE FINISH COAT SHALL MATCH CARBOLINE *C900-Ebony Black).
- MATERIAL AND CONSTRUCTION SHALL CONFORM TO THE STRUCTURAL WELDING CODE A.W.S. D1.1-01.
- SHOP DETAILS MUST BE SUBMITTED AND APPROVED BY THE ENGINEER.
- SLOPE OF HANDRAIL SHALL MATCH THE SLOPE OF THE WINGWALL.
- ALL WORK ASSOCIATED WITH FURNISHING AND INSTALLING HANDRAIL AND STONE FASCIA SHALL BE LISTED ON BILL OF MATERIALS AS "BRIDGE HANDRAIL(STEEL)(PEDESTRIAN)".

BRIDGE HANDRAIL (STEEL)(PEDESTRIAN) 107 L.F.



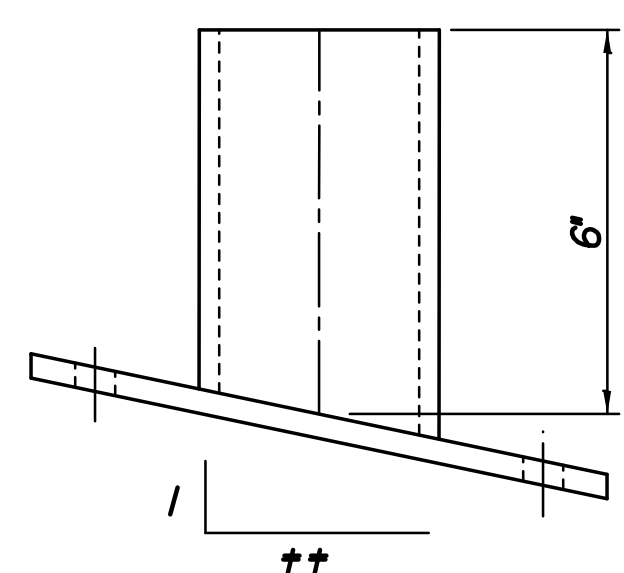
SOUTHEAST WING ELEVATION

Set rail slope to match wing



NORTHEAST WING ELEVATION

Set rail slope to match wing



BASE PLATE ELEVATION

Plate along wingwall slope
Pipe Plumb

NE	5.13
SE	8.88
NW	7.32
SW	4.20

No.	Revision	By	Date
NEWMARKET OFFICE 2ND-PHASE 2 PAVING AND INCIDENTAL DRAINAGE IMPROVEMENTS PEDESTRIAN RAIL PLAN AND WING ELEVATIONS GARY JANZEN, P.E. - CITY ENGINEER CITY OF WICHITA PROJECT NO. 472-84991			
		PROFESSIONAL ENGINEERING CONSULTANTS, P.A. 303 SOUTH TOPEKA WICHITA, KS 67202 316-262-2691 www.pec1.com	
Designed by	MLB	Job No.	35-15120-001
Drawn by	MLB	Date	November 2015