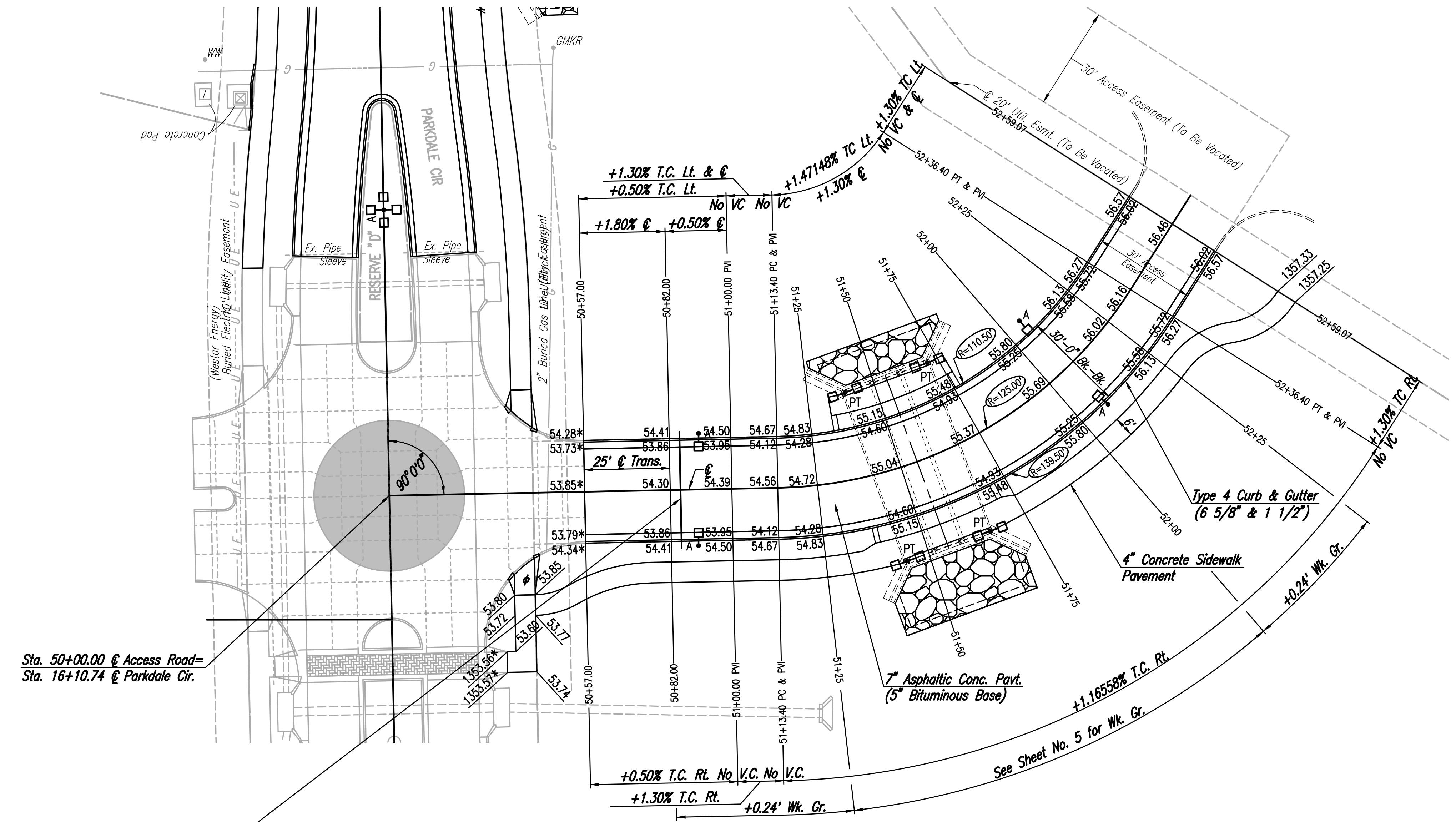
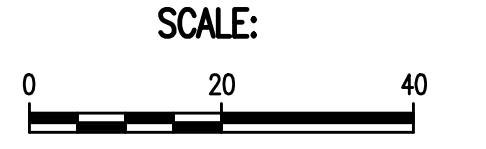
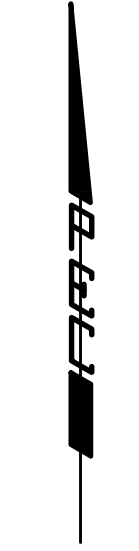


C CURVE DATA						
A=56°22'48" L		D= 45° 50' 11.8"		R= 125.00'	L= 123.00'	T= 67.00'
CURVE DATA BASED ON C radius Δ/2= 28° 11' 24"						
C STATION	C ARC LENGTH	FACE CURB LENGTH		CHORD LENGTH		DEFLECTION ANGLE
		LEFT CURB	RIGHT CURB	B' OFF LEFT FACE CURB	B' OFF RIGHT FACE CURB	C TOTAL DEFLECTION
51+13.40						0°00'00.0"
51+25.00	11.60'	10.25'	12.95'	9.51'	13.68'	02°39'30.7"
51+50.00	25.00'	22.10'	27.90'	20.47'	29.45'	05°43'46.5"
51+75.00	25.00'	22.10'	27.90'	20.47'	29.45'	05°43'46.5"
52+00.00	25.00'	22.10'	27.90'	20.47'	29.45'	05°43'46.5"
52+25.00	25.00'	22.10'	27.90'	20.47'	29.45'	05°43'46.5"
52+36.40	11.40'	10.08'	12.72'	9.35'	13.45'	02°36'45.7"
TOTAL	123'	108.73'	137.27'			28°11'24.1"

Defl./ft. = 13.750987 min.



Sta. 50+00.00 @ Access Road=  
Sta. 16+10.74 @ Parkdale Cir.

@ Sta. 50+85, 17.00' Lt. to 17.00' Rt.  
Install 1-34.00 L.F. SDR 21 4" PVC Pipe ≠  
Sleeves. See Sheet No. 3 for Details.

- \* Match Existing
- φ Construct Std. Wheelchair Ramp, See Sheet No. 8.
- ≠ Sleeves to be 42" below top of curb.  
Each end of 4" PVC pipe sleeves shall be capped  
and marked with steel "T" posts or 2" dia.  
steel pipe a maximum of 12" above finished  
grade. Pipe, caps, markers, and installation  
thereof shall be paid for at the unit price bid  
per linear foot "Irrigation Sleeves".

Scaled 10-05-2015 12:15:01 PM by BJS  
 Plot Scale 1:1 11-02-2015 9:38:37 AM by BJS  
 U:\Wichita-Civil\2015\15120\002\Mun\Drawings\15120-002-04C-PAVING PLAN-ACCESS ROAD

	Revision		By	Date
	NEWMARKET OFFICE 2ND-ACCESS DRIVE PAVING AND INCIDENTAL DRAINAGE IMPROVEMENTS <b>PAVING PLAN-ACCESS ROAD</b> GARY JANZEN, P.E. - CITY ENGINEER CITY OF WICHITA PROJECT NO. 472-85225			
	PROFESSIONAL ENGINEERING CONSULTANTS, P.A. 303 SOUTH TOPEKA WICHITA, KS 67202 316-262-2691 www.pec1.com			
	Designed by	BMM, TBK	Job No.	35-15120-002
Drawn by	BJS	Date	November 2015	