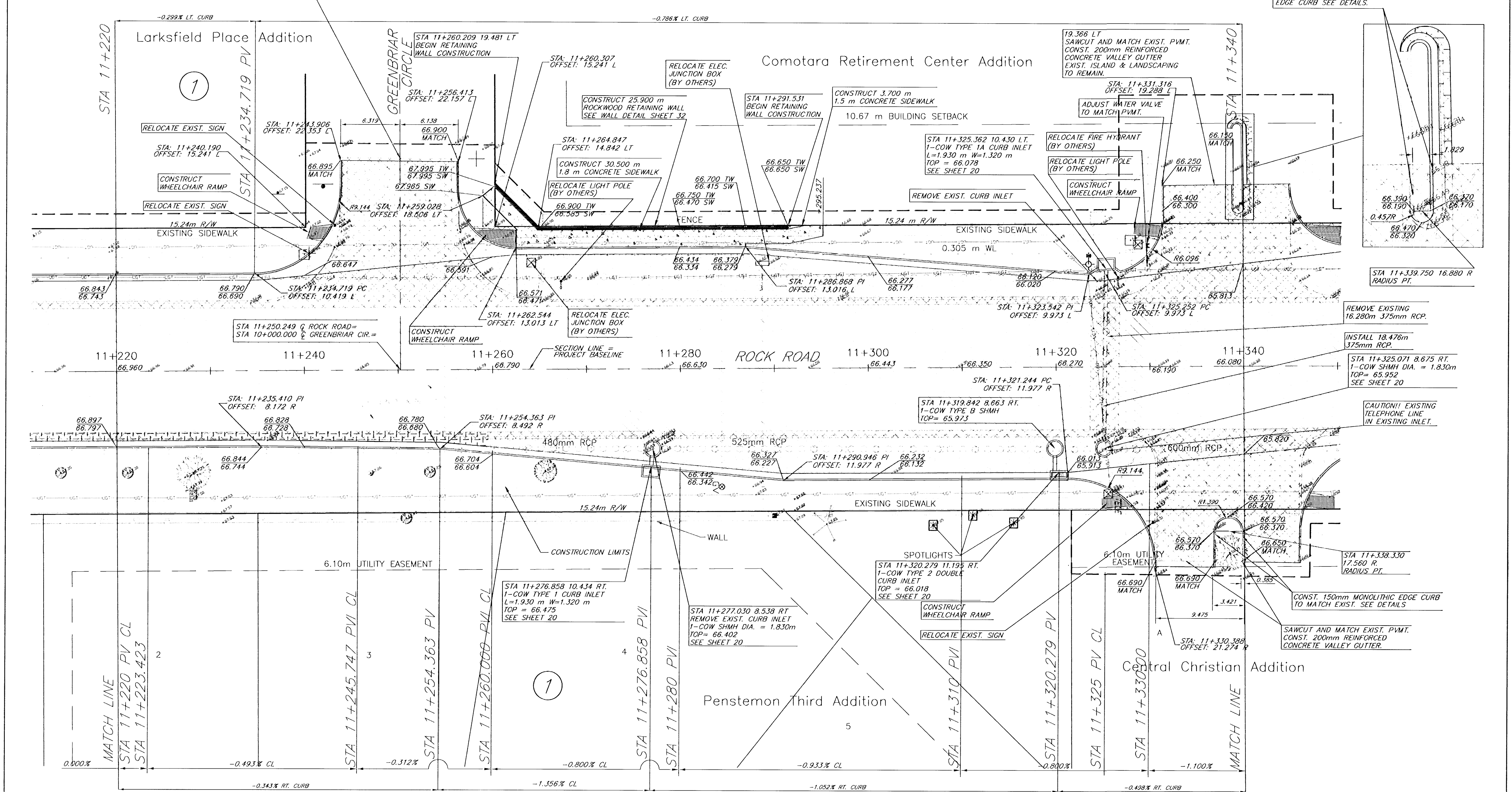
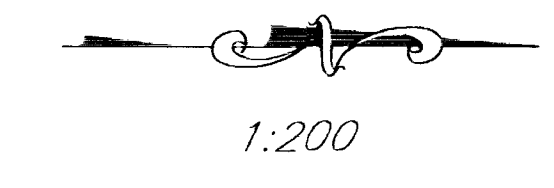


FHWA REG. NO.	STATE	PROJECT NO.	YEAR	SHEET NUMBER	TOTAL SHEETS
7	KANSAS	87N-0197-01	2004	14	51

FED. AID NO. CHQ-N019 (701)

- Retaining wall at NW corner of Rock & Greenbriar shall be gray with a cap row.
- Property owner shall relocate flag pole bases in median. Contractor shall preserve existing electrical supply to median. Contact Donna Tarkowski at 636-1920 prior to median work.



	Remove		50 mm Overlay		XX.XXX(TOP OF CURB, TC) /XX.XXX(EDGE OF PAVEMENT, HIGH EDGE.)
	50 mm Mill and Overlay		200mm Asphalt Pavement See Detail Sheet		Fescue Sod
	Edge Mill and Overlay		Portland Cement See Detail Sheet		150mm Concrete Base w/ 50mm Asphalt Wearing Course

**Rock Road-21st Street North to 29th Street North  
Sta. 11+220 to 11+340  
City of Wichita**

<b>kemiller engineering</b>		PROJECT NUMBER 472-83889	
KEM NO. 02042	FILE plan11	DATE 8/2002	SHEET 14
DESIGN PB	DRAWN PB	REVISED 3/2004	OF 51

518 S. Market, Wichita, KS 67202      318/284-0242