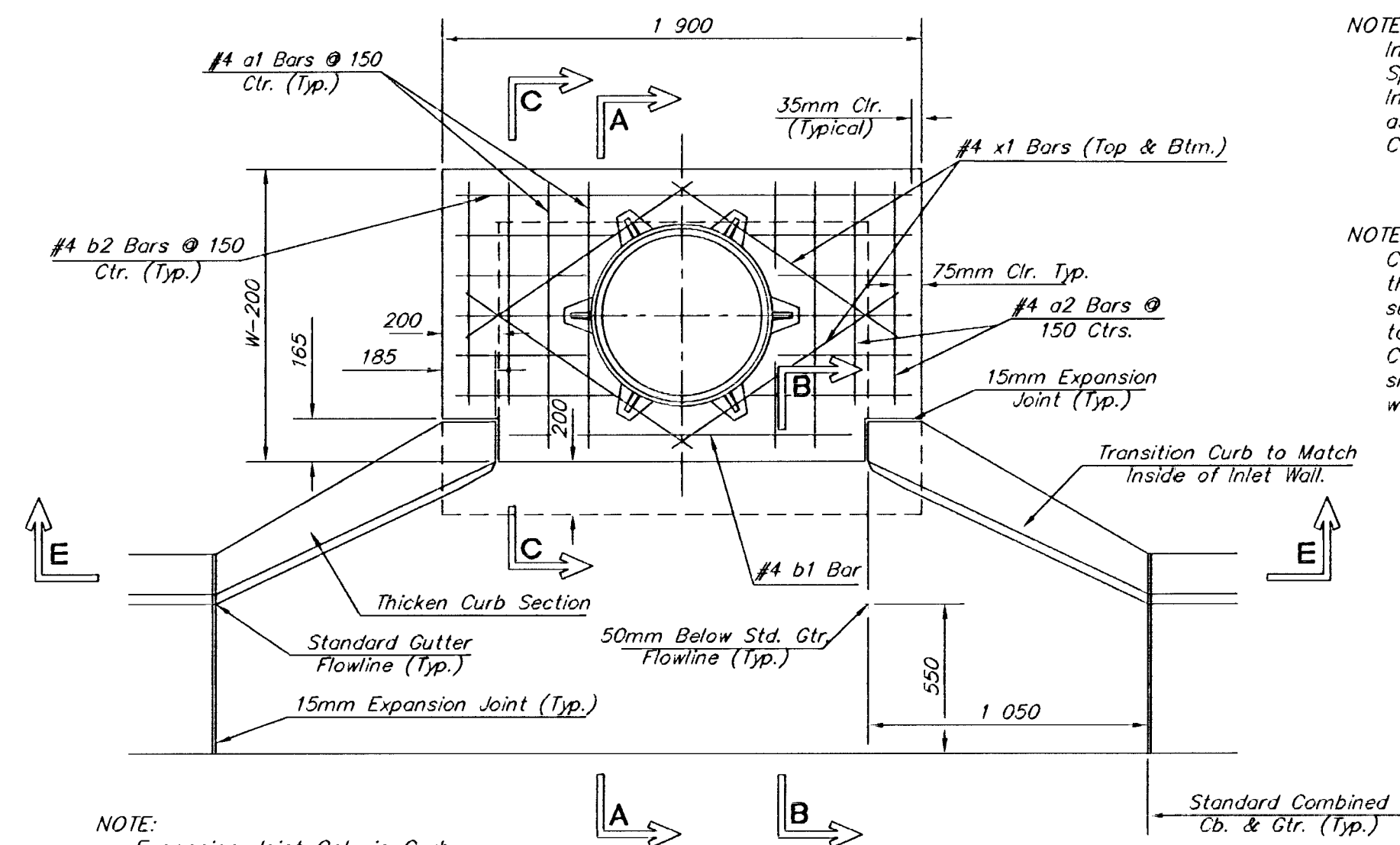


FHWA REG. NO.	STATE	PROJECT NO.:	YEAR	SHEET NUMBER	TOTAL SHEETS
7	KANSAS	87N-0197-01	2004	21A	51

FED. AID NO. CM-A-N019 (701)

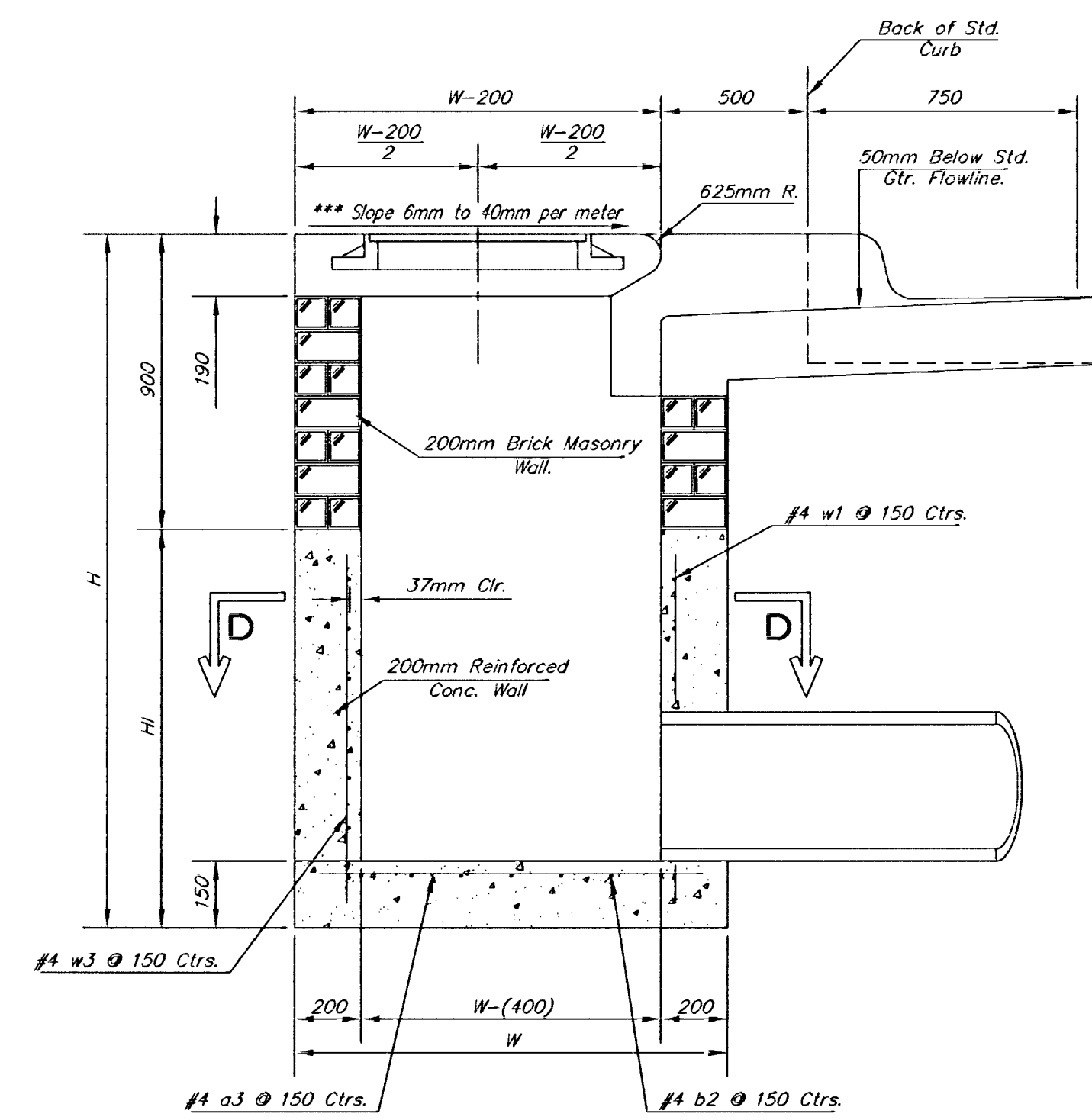


NOTE: Inlet Top Reinforcing shall be Spaced on 6" Max. Centers. Inlet Lids Shall be Notched Out as Indicated to Facilitate Construction of Curb.

NOTE: Concrete Tops to be installed on thin mortar cushion to insure full support along brick walls. Concrete tops may be cast in place or precast. Concrete used for inlet construction shall be concrete pavement mix with air entrainment.

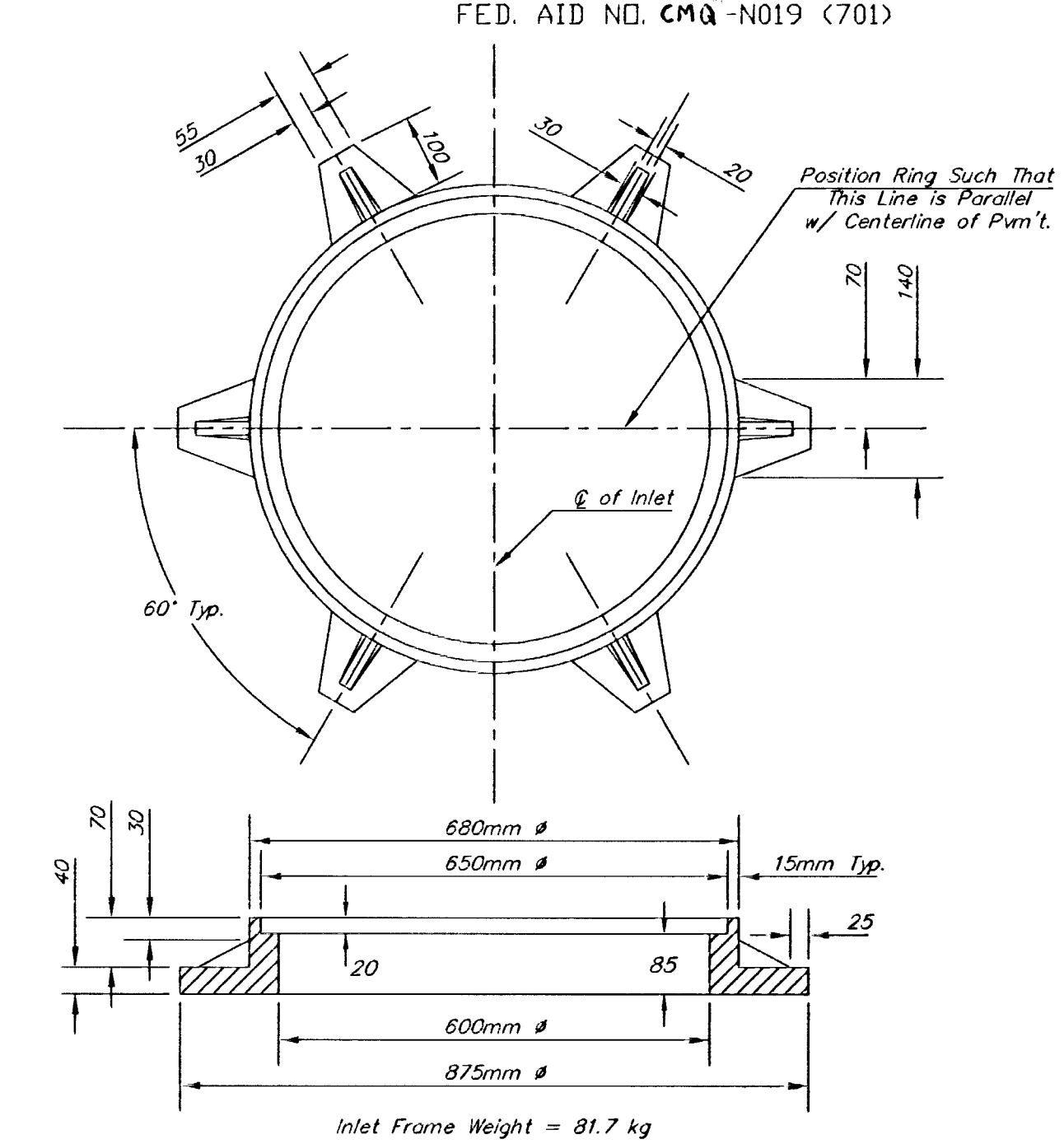
NOTE: Expansion Joint Only in Curb Area With Concrete Pavement.

PLAN



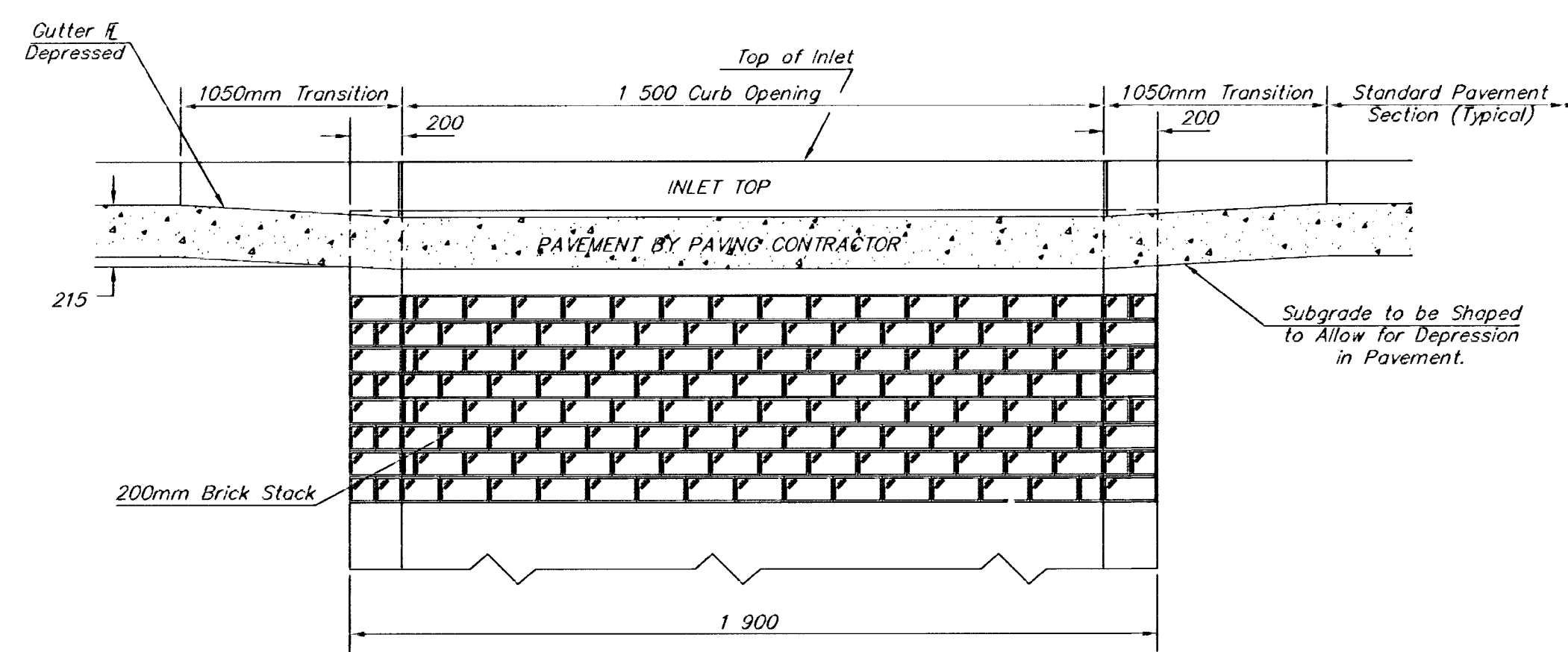
SECTION A-A

\*\*\*NOTE: Slope of inlet tops to Match Sidewalk or Parking Slopes within Limits Indicated.

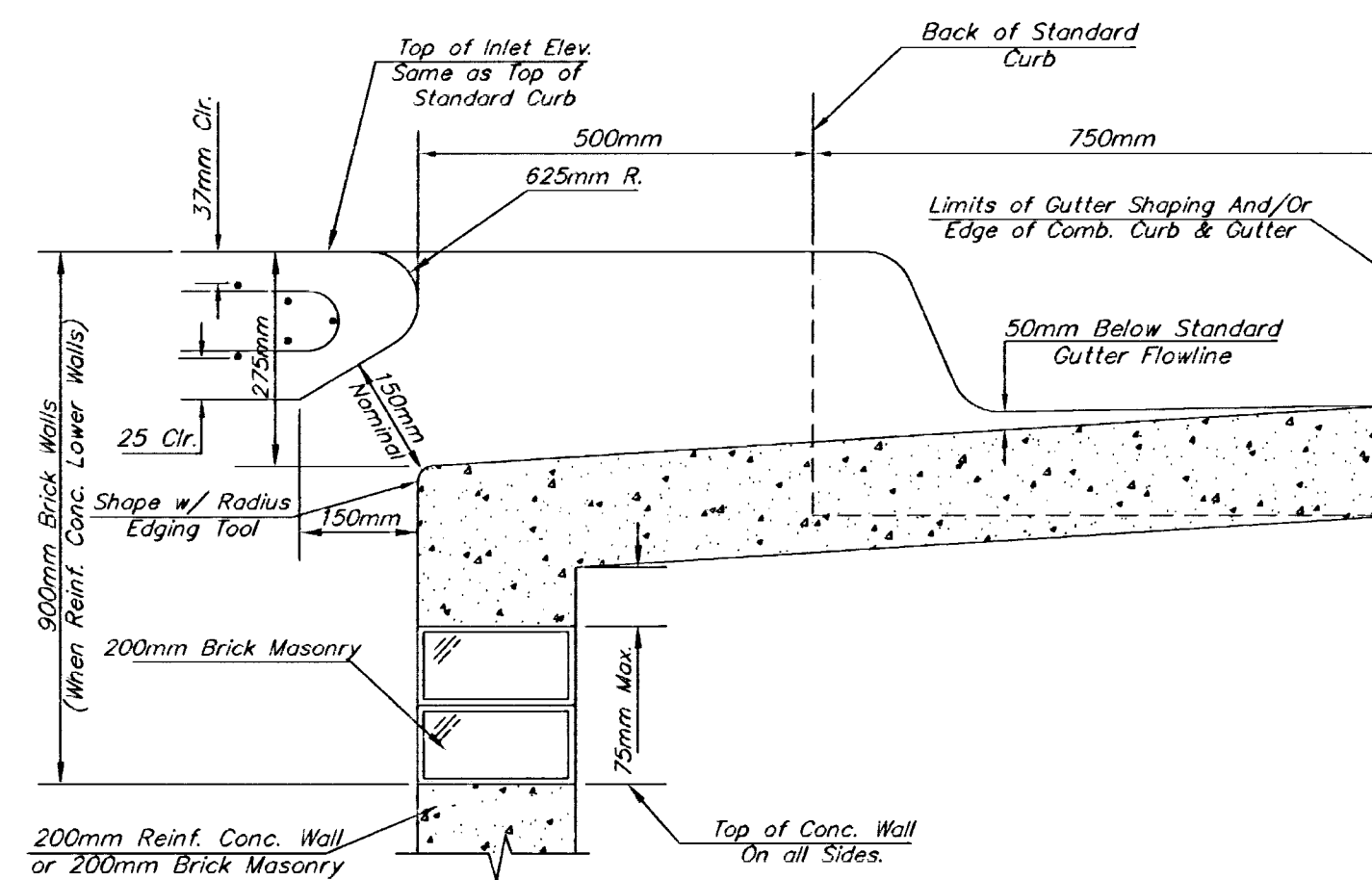


MANHOLE RING AND COVER

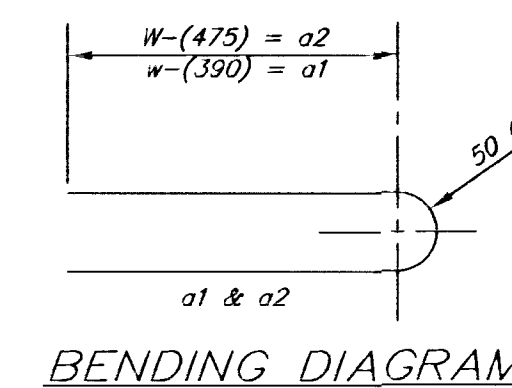
\*See City of Wichita Standard Manhole Ring and Cover Detail Sheet for Cover Details to Be Used With Inlet Frame.



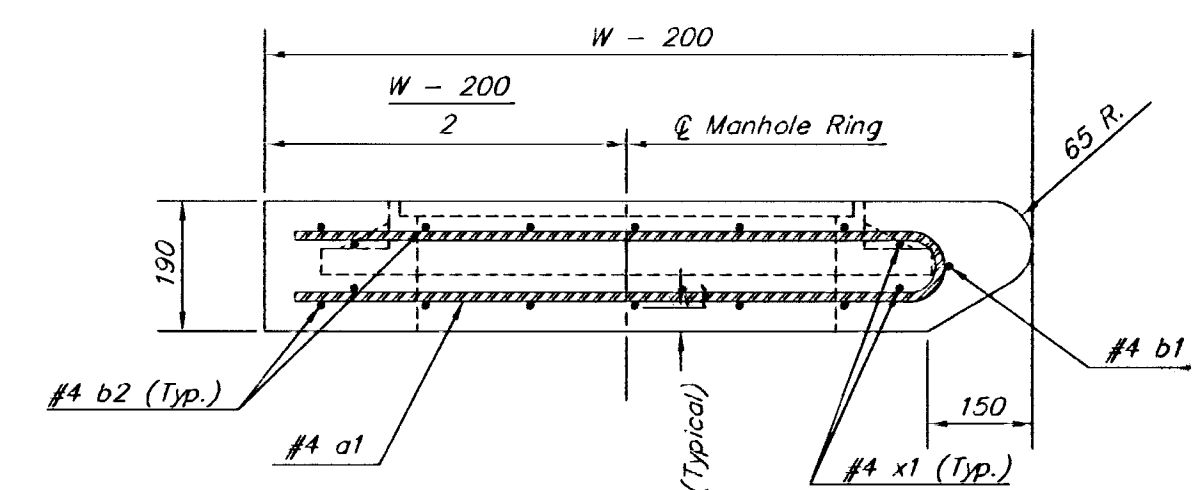
SECTION E-E



SECTION B-B

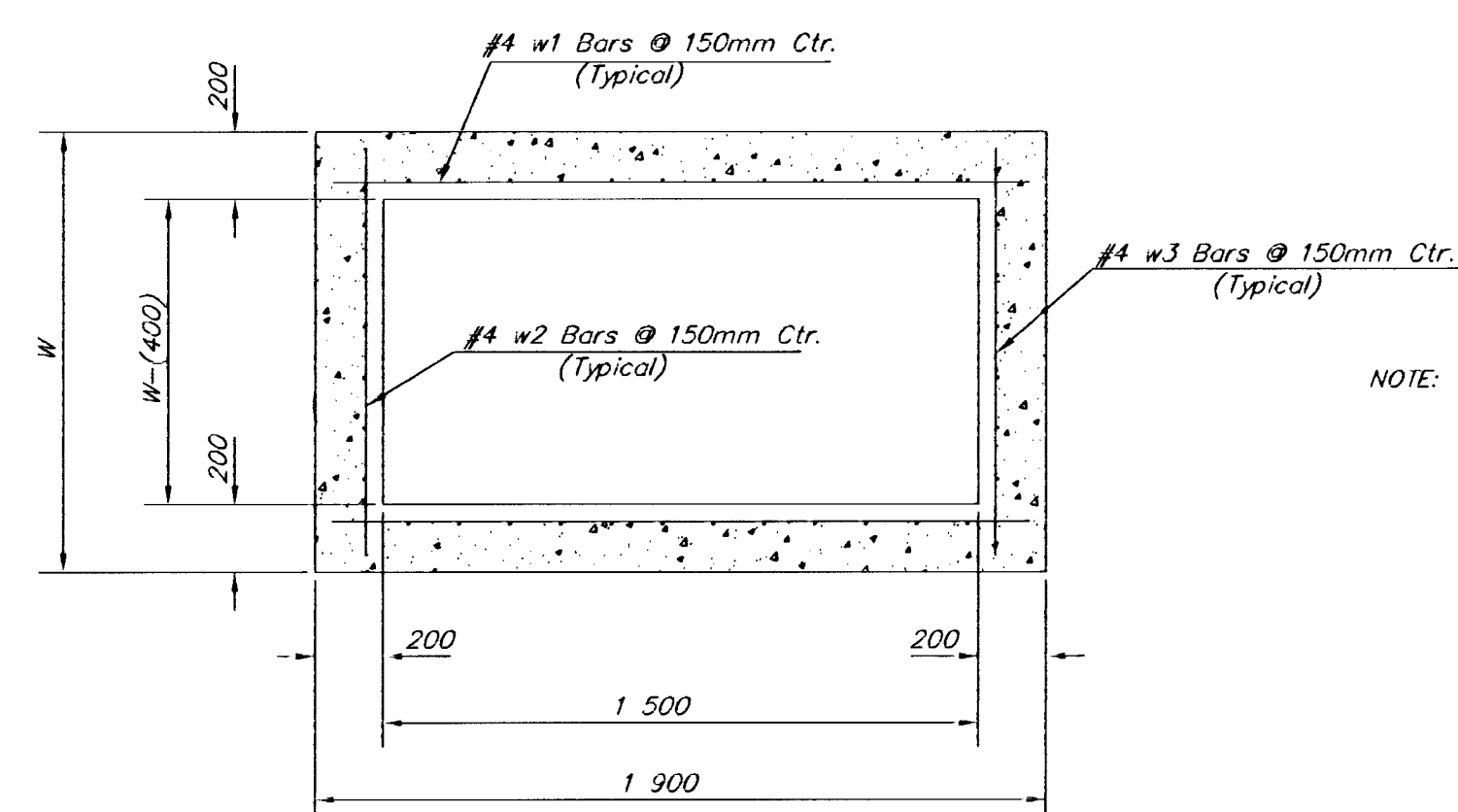


BENDING DIAGRAM



SECTION A-A

W	PRE-CAST TOP SIZE	PIPE SIZE	CU. YD. CONC.
1 300	1 100 x 3 400 x 190	525mm & SMALLER	0.63±
1 600	1 400 x 3 400 x 190	600mm & 750mm	0.83±
1 900	1 700 x 3 400 x 190	900mm & 1050mm	1.03±
2 200	2 000 x 3 400 x 190	1200mm & 1350mm	1.23±
2 500	2 300 x 3 400 x 190	1500mm & 1650mm	1.42±



SECTION D-D

NOTE: Contractor shall have the option of constructing 200mm brick masonry walls between the concrete inlet base and top on this inlet when W=1 900 and H=2 100 or less.

Additional curb and gutter construction necessary to connect set-back inlet to pavement will be paid for at the unit price bid for each inlet hookup.

Inlet invert shall be shaped with 8 sock sand mix concrete to create flow channels and to increase hydraulic efficiency such that the inlet will be self-cleaning between all inlet and/or outlet pipes.

The ends of all pipes installed in inlets shall be cut off flush with the inside face of the inlet wall

PRECAST SLAB AND FLOOR REINFORCING											
MARK	SIZE	W = 1 300		W = 1 600		W = 1 900		W = 2 200		W = 2 500	
		NO.	LENGTH	NO.	LENGTH	NO.	LENGTH	NO.	LENGTH	NO.	LENGTH
a1	#4	13	1 975	13	2 575	13	3 175	13	3 775	13	4 375
a2	#4	4	1 800	4	2 400	4	3 000	4	3 600	4	4 200
a3	#4	23	1 225	23	1 525	23	1 825	23	2 125	23	2 425
b1	#4	1	2 925	1	2 925	1	2 925	1	2 925	1	2 925
a2	#4	23	3 325	29	3 325	35	3 325	41	3 325	47	3 325
x1	#4	16	1 150	16	1 250	16	1 350	16	1 450	16	1 550

\* Field Bend or Cut Reinforcing as Required for Clearance.  
 ① 4 (H - 300) (H - 525) Rounded down to nearest 150mm  
 ② H - 75

**STANDARD TYPE 1-A  
CURB INLET  
OPENING = 150 x 1 500**

Rock Road 21st Street North to 29th Street North  
**Type 1-A Inlet (Single)**  
 City of Wichita

	PROJECT NUMBER 472-83889		SHEET <b>21A</b> OF 51
	HEM NO. 02042 DESIGN	FILE (Single) DRAWN	

MAR 96

516 S. Market, Wichita, KS 67202 318/284-0242