

BENCHMARKS:
 BM #1: 135th St. W. & Pawnee
 City of Wichita Benchmark Disc,
 northeast corner of concrete base
 on SW corner of concrete base of
 high line pole.
 Elev. = 1359.65 NGVD29

BM #2: City of Wichita
 Benchmark Disc, 0.4 Mi. South
 of Kellogg on 135th St. W.,
 west side of concrete base for
 high line pole, west of K.G.&E.
 Substation, 135± south of
 railroad tracks on east side of
 135th St. W.
 Elev. = 1367.77 NGVD29

WL Sta. 0+00, Begin Line 1
 BL Sta. 0+00, 26.00' Lt.
 Remove Existing 2" Blowoff
 Valve and Extend 8" Water
 Line Pipe West.
 Contractor to Verify Depth &
 Location of Existing 8" Water
 Line Prior to Construction.

55.59 L.F. 8" Pipe
 WL Sta. 3+29.29, Line 1
 BL Sta. 3+03.03, 26.00' Lt.
 1-Fire Hydrant Assembly
 (L = 5')
 Bury Line Elev. = 1335.70
 Valve Box Elev. = 1335.80

WL Sta. 3+84.88, Line 1 =
 WL Sta. 0+00, Line 2
 BL Sta. 3+54.18, 26.00' Lt.
 1 - 8"x6" CIMJ Tee
 1 - 6" Valve Assy. (W)
 (Gate Valve)
 Valve Box Elev. = 1336.60

For Radii Under 200'
 Contractor to Use
 Short Pipe Lengths

WL Sta. 7+13.17, Line 1
 BL Sta. 7+00.99, 26.00' Lt.
 1 - 8" Anch. Valve Assy. (Special)
 Valve Box Elev. = 1337.00

25.00 L.F. 8" Pipe
 WL Sta. 7+38.17, End Line 1
 BL Sta. 7+25.99, 26.00' Lt.
 1-2" Blowoff Assy.
 Valve Box Elev. = 1337.45

WL Sta. 5+40.12, Line 1 =
 WL Sta. 0+00, Line 3
 BL Sta. 5+06.40, 25.99' Lt.
 1 - 8"x8" CIMJ Tee
 1 - 8" Valve Assy. (E)
 (Gate Valve)
 Valve Box Elev. = 1336.70

WL Sta. 6+84.21, Line 1-PT

173.05 L.F. 8" Pipe

WL Sta. 4+99.27, Line 1-PRC

WL Sta. 4+00, Line 3

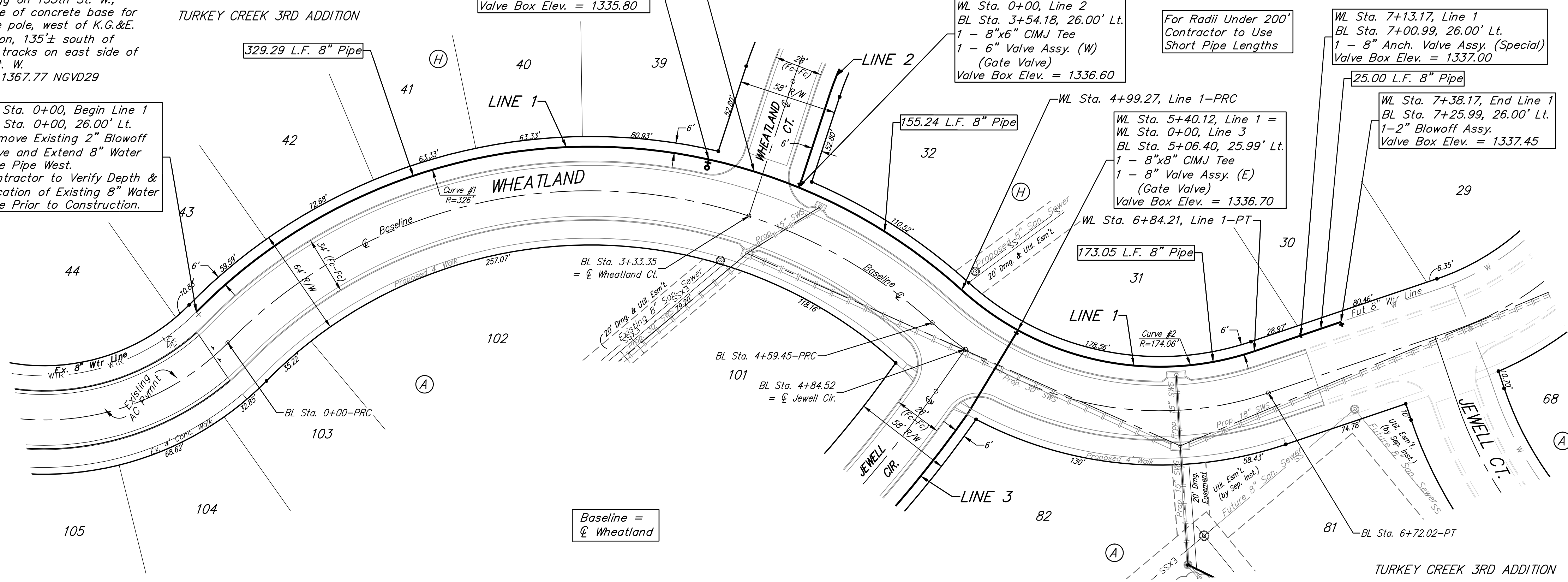
WL Sta. 7+13.17, Line 1

WL Sta. 7+38.17, End Line 1

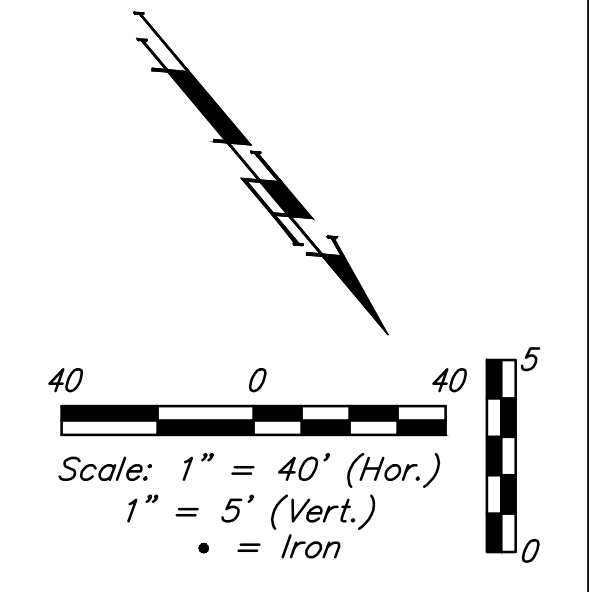
WL Sta. 7+25.99, 26.00' Lt.

1-2" Blowoff Assy.

Valve Box Elev. = 1337.45



FIRE HYDRANTS REQUIRED					
LINE	STATION	BURY LINE ELEVATION	TOP OF PIPE ELEVATION	FIRE HYDRANT BURY REQUIRED*	VALVE STEM EXT. REQUIRED (ft)*
1	3+29.29	1335.70	1331.82	4.5'	-

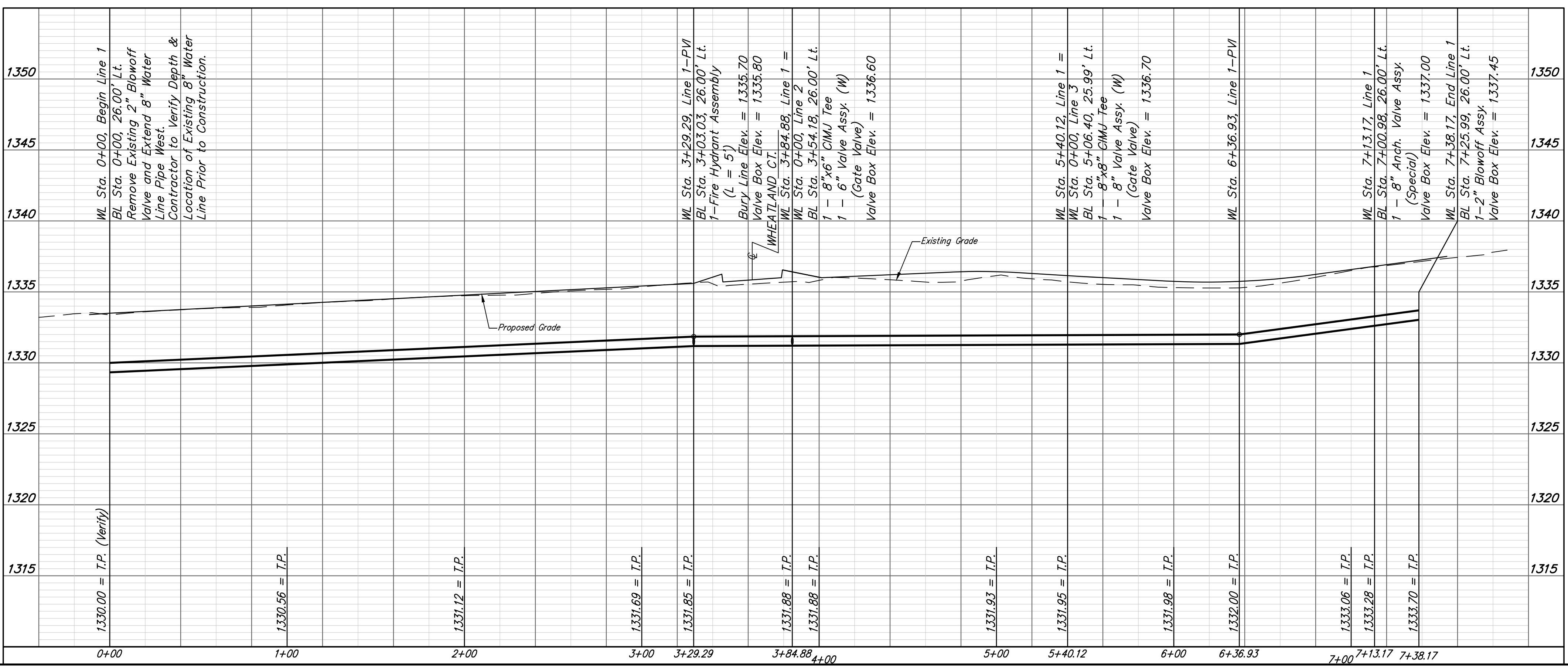


Curve #1
 Curve Data Based on Centerline of Pipe
 Rad. = 326' Delta = 87°44'58" Tangent = 313.44'
 Arc = 499.27' L.C. = 451.89' Def./ft. = 5.27266 Min.

Station	Arc	8' Left	Defl.	Total Defl.
0+00.00	-	-	0°00'00"	0°00'00"
0+25.00	25.00'	25.61'	2°11'49"	2°11'49"
0+50.00	25.00'	25.61'	2°11'49"	4°23'38"
0+75.00	25.00'	25.61'	2°11'49"	6°35'27"
1+00.00	25.00'	25.61'	2°11'49"	8°47'16"
1+25.00	25.00'	25.61'	2°11'49"	10°59'05"
1+50.00	25.00'	25.61'	2°11'49"	13°10'54"
1+75.00	25.00'	25.61'	2°11'49"	15°22'43"
2+00.00	25.00'	25.61'	2°11'49"	17°34'32"
2+25.00	25.00'	25.61'	2°11'49"	19°46'21"
2+50.00	25.00'	25.61'	2°11'49"	21°58'10"
2+75.00	25.00'	25.61'	2°11'49"	24°09'59"
3+00.00	25.00'	25.61'	2°11'49"	26°21'48"
3+25.00	25.00'	25.61'	2°11'49"	28°33'37"
3+29.29	25.00'	4.29'	0°22'37"	28°56'14"
3+50.00	20.71'	1.21'	1°49'12"	30°45'26"
3+75.00	25.00'	25.61'	2°11'49"	32°57'15"
3+84.88	9.88'	10.12'	0°52'06"	33°49'21"
4+00.00	15.12'	15.49'	1°19'43"	35°09'04"
4+25.00	25.00'	25.61'	2°11'49"	37°20'53"
4+50.00	25.00'	25.61'	2°11'49"	39°32'42"
4+75.00	25.00'	25.61'	2°11'49"	41°44'31"
4+99.27	24.27'	24.86'	2°07'58"	43°52'29"

Curve #2
 Curve Data Based on Centerline of Pipe
 Rad. = 174.06' Delta = 60°33'44" Tangent = 102.32'
 Arc = 184.94' L.C. = 176.41' Def./ft. = 9.87816 Min.

Station	Arc	8' Left	Defl.	Total Defl.
4+99.27	-	-	0°00'00"	0°00'00"
5+00.00	0.73'	0.70'	0°07'13"	0°07'13"
5+25.00	25.00'	23.84'	4°06'57"	4°14'10"
5+50.00	25.00'	23.84'	4°06'57"	8°21'07"
5+75.00	25.00'	23.84'	4°06'57"	12°28'04"
6+00.00	25.00'	23.84'	4°06'57"	16°35'02"
6+25.00	25.00'	23.84'	4°06'57"	20°41'59"
6+50.00	25.00'	23.84'	4°06'57"	24°48'56"
6+75.00	25.00'	23.84'	4°06'57"	28°55'53"
6+84.21	9.21'	8.79'	1°30'59"	30°26'52"



Baughman Turkey Creek 3rd Addition - Phase 3A
LINE 1
 Water Distribution System

Baughman Company, P.A. 315 Ellis St. Wichita, KS 67211 P 316-262-7271 F 316-262-0149
 ENGINEERING | SURVEYING | PLANNING | LANDSCAPE ARCHITECTURE

PROJECT NUMBER: 448-90264
 DESIGN: AEG
 DRAWN: JAK
 APPROVED: [Signature]
 DATE: 1/11/16

REVISIONS:

SCALE: Noted
 SHEET: 4 OF 15

E:\Projects\Turkey Creek 3rd\Engineering\Phase 3A\Wtr_1505E241\WTR_PLANS.dwg