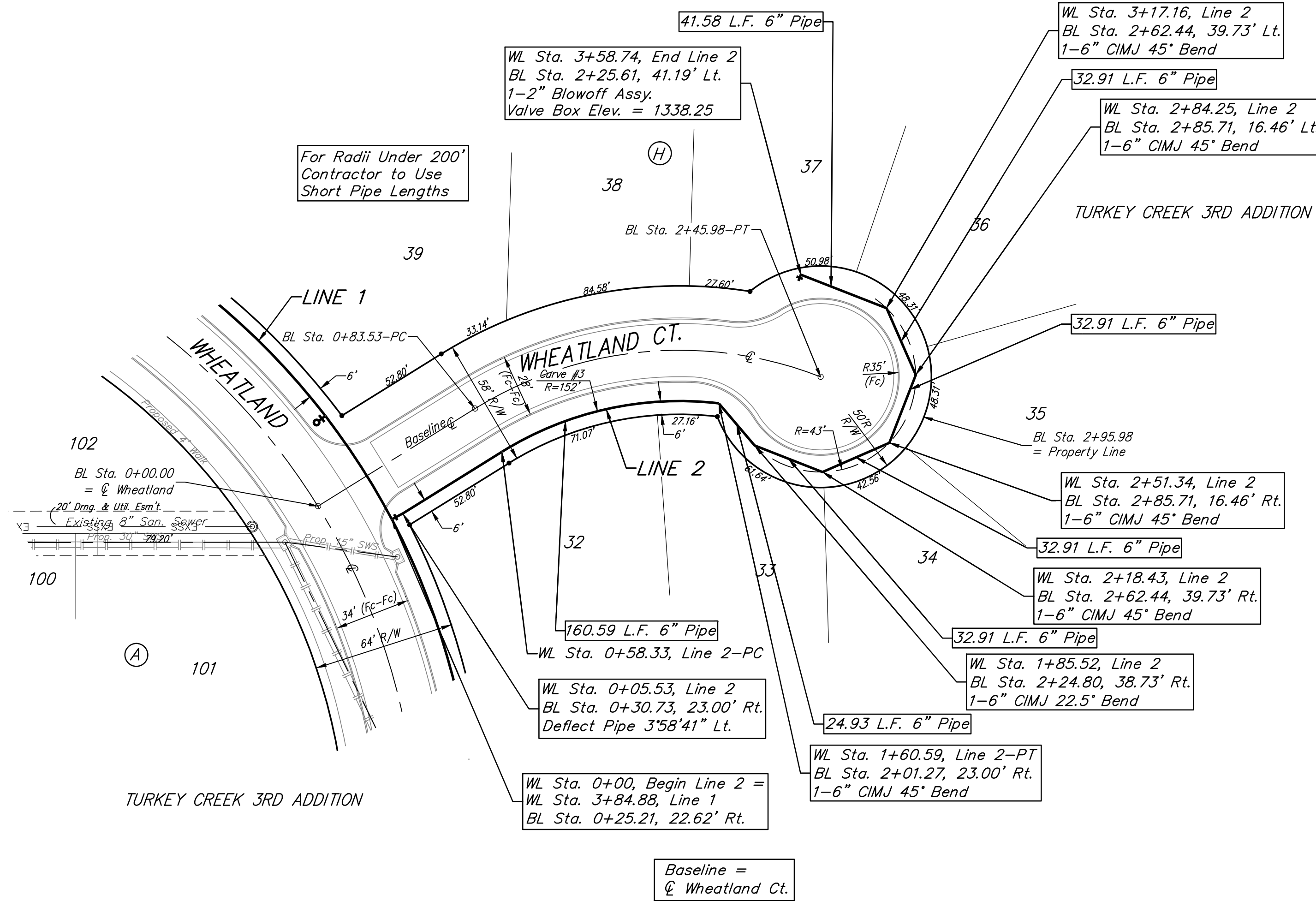


BENCHMARKS:

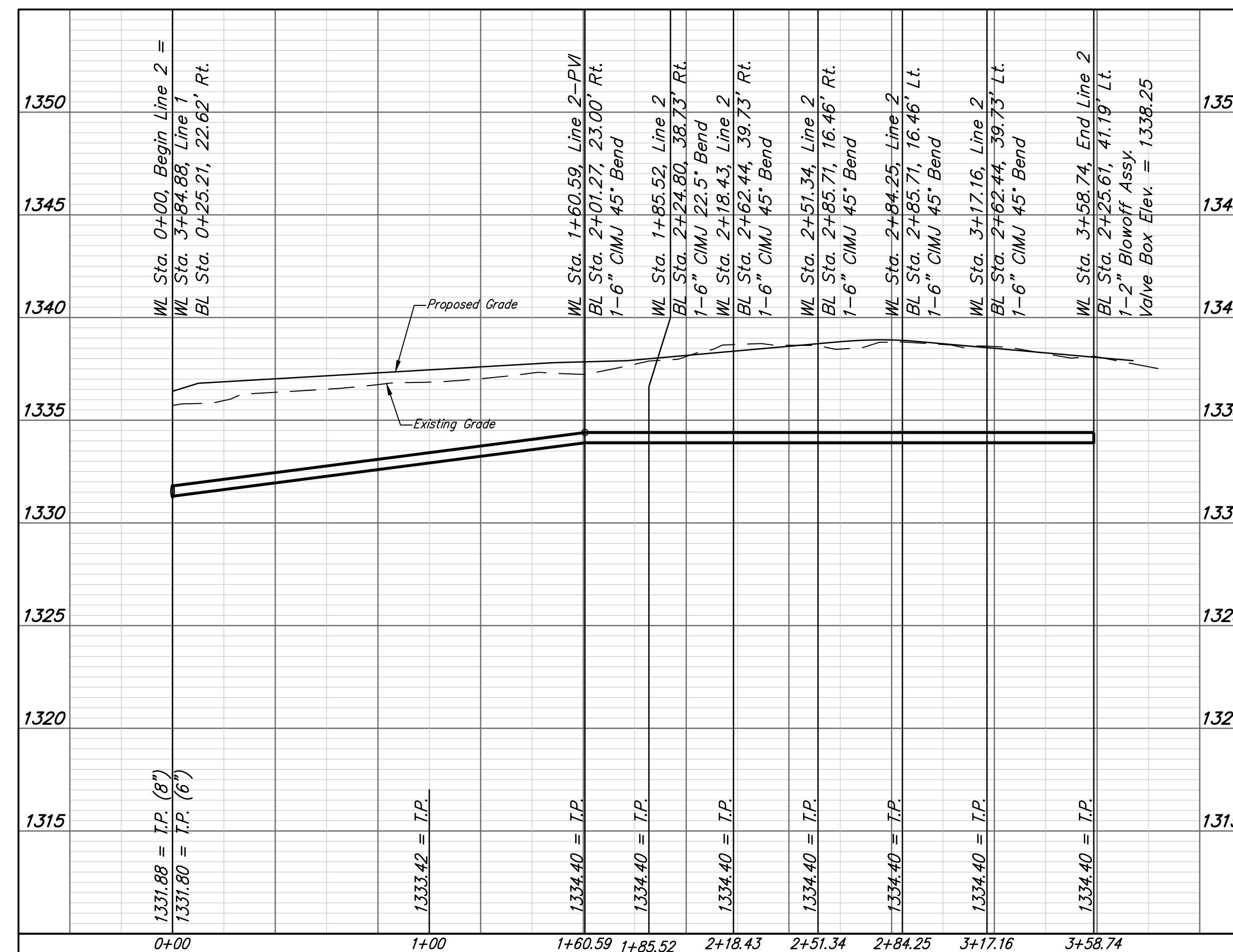
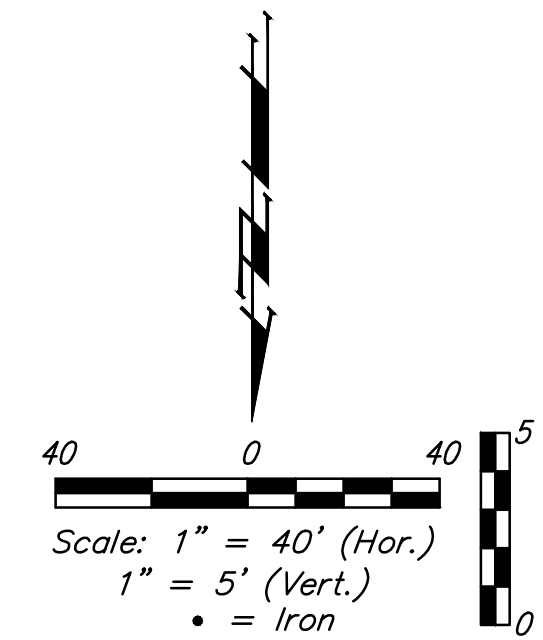
BM #1: 135th St. W. & Pawnee
City of Wichita Benchmark Disc,
northeast corner of intersection
on SW corner of concrete base
of high line pole.
Elev. = 1359.65 NGVD29

BM #2: City of Wichita
Benchmark Disc, 0.4 Mi. South
of Kellogg on 135th St. W.,
west side of concrete base for
high line pole, west of K.G.&E.
Substation, 135± south of
railroad tracks on east side of
135th St. W.
Elev. = 1367.77 NGVD29



Curve #3
Curve Data Based on Centerline of Pipe
Rad. = 152' Delta = 38°32'55" Tangent = 53.15'
Arc = 102.26' L.C. = 100.35' Def./ft. = 11.30900 Min.

Station	Arc	8' Right	Defl.	Total Defl.
0+58.33	-	-	0'00"00"	0'00"00"
0+75.00	16.67'	15.79'	3'08"31"	3'08"31"
1+00.00	25.00'	23.66'	4'42"44"	7'51"15"
1+25.00	25.00'	23.66'	4'42"43"	12'33"58"
1+50.00	25.00'	23.66'	4'42"44"	17'16"42"
1+60.59	10.59'	10.03'	1'59"46"	19'16"28"



Baughman Turkey Creek 3rd Addition - Phase 3A
LINE 2
Water Distribution System

Baughman Company, P.A. 315 Ellis St. Wichita, KS 67211 P 316-262-7271 F 316-262-0149
ENGINEERING | SURVEYING | PLANNING | LANDSCAPE ARCHITECTURE

PROJECT NUMBER 448-90264	DESIGN AEG	DRAWN JAK
REVISIONS:	APPROVED	DATE 1/11/16
	SCALE Noted	SHEET 5 OF 15

E:\Projects\Turkey Creek 3rd\Engineering\Phase 3A\Wtr_1505E24\WTR_PLANS.dwg