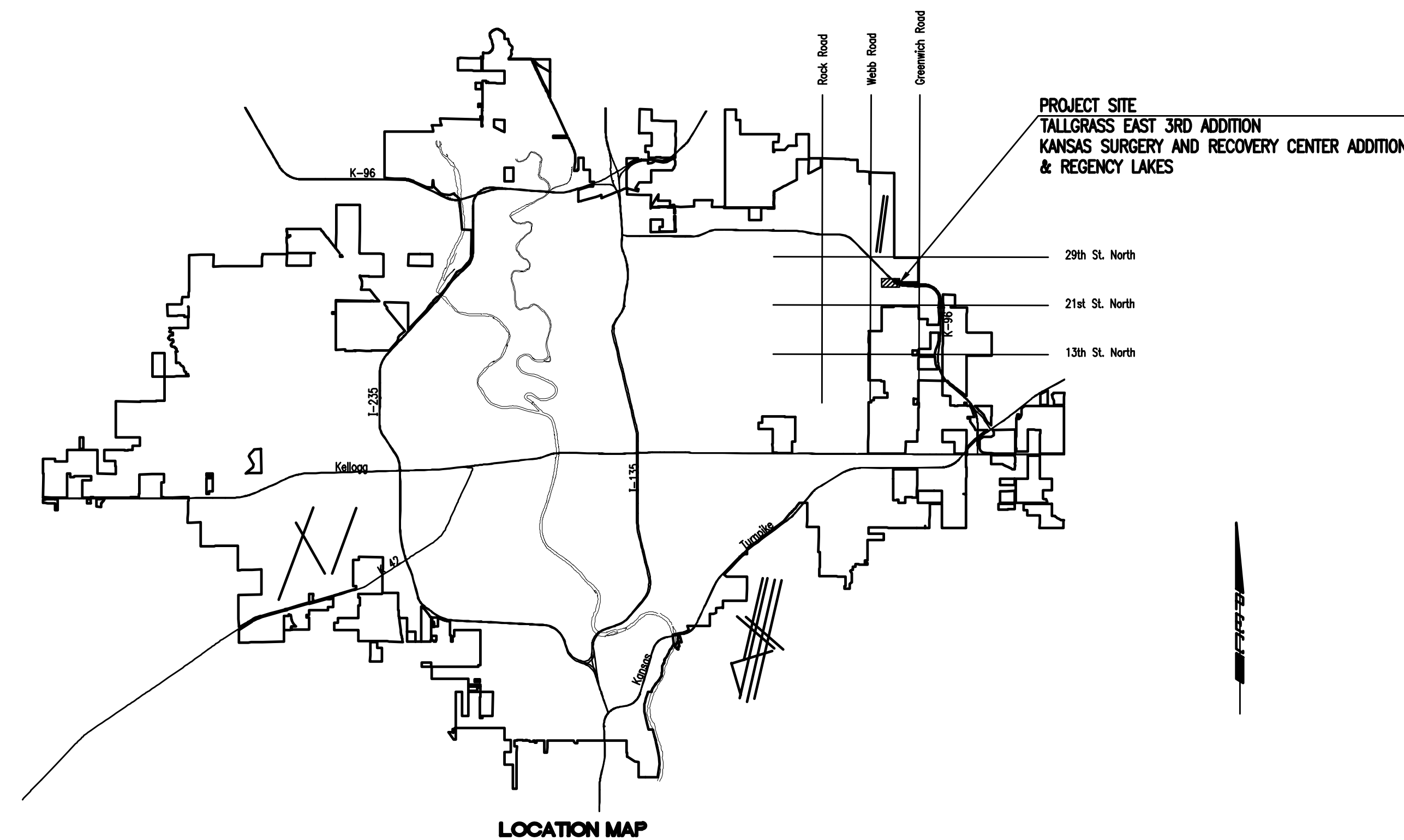


WINDEMERE LIFT STATION ABANDONMENT AND SANITARY SEWER EXTENSION IN THE CITY OF WICHITA, KANSAS

CITY OF WICHITA PROJECT NO. 468-84938
OCA NO. 620723
GARY JANZEN, P.E. - CITY ENGINEER

McCullough Excavation - Contractor
J. Wagner - City of Wichita, Field Project Engineer
K. Yale - City of Wichita, Inspector
As-built
Service taps
Release Date: 9/28/2015
pdf: aprosas 2/9/2016



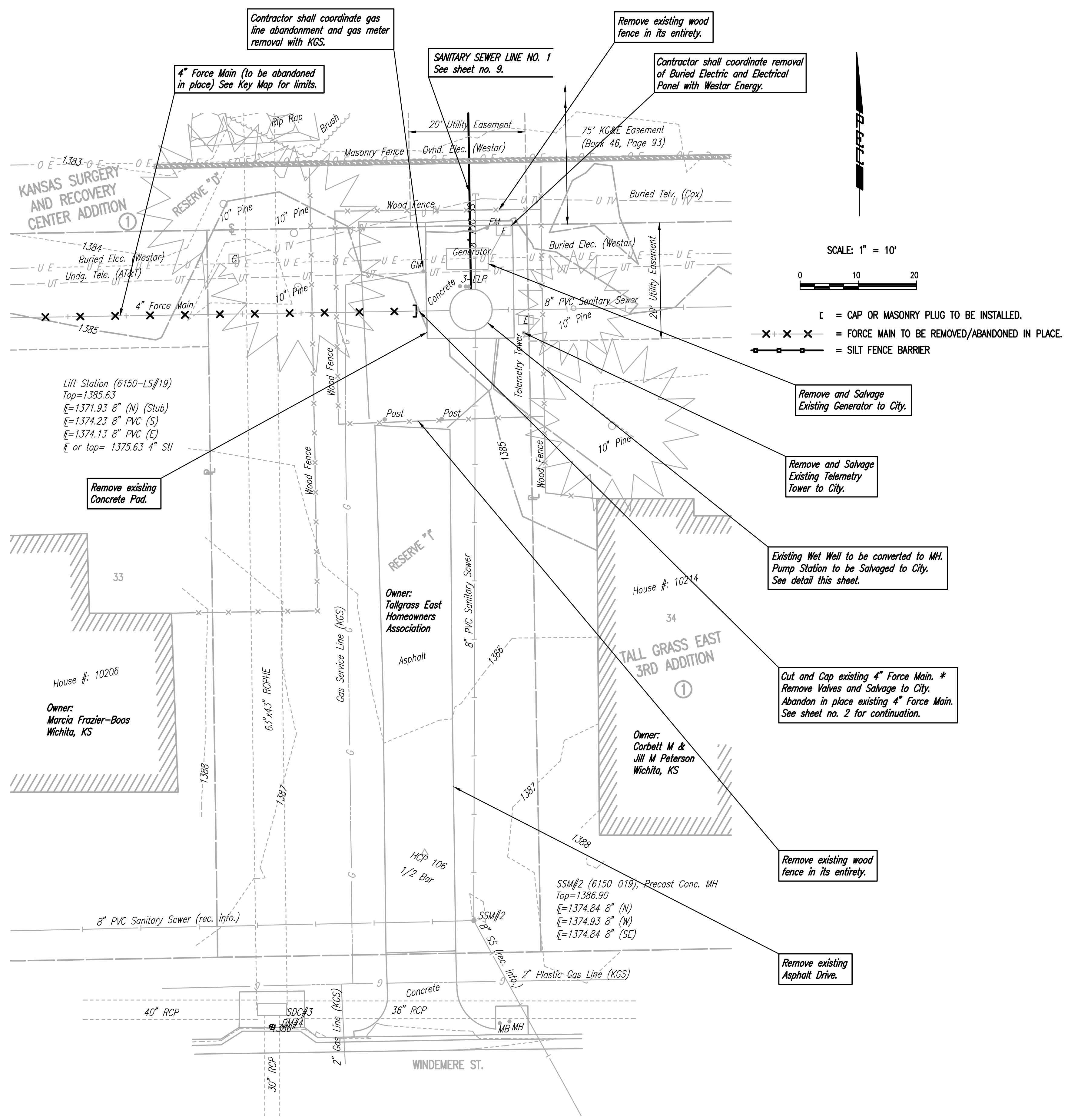
INDEX OF SHEETS

SHEET NO. 1	TITLE SHEET
SHEET NO. 2	KEY MAP AND GENERAL NOTES
SHEET NO. 3	BUBBLE MAP
SHEET NO. 4-6	PLATS
SHEET NO. 7-9	PLAN/PROFILE
SHEET NO. 10	LIFT STATION ABANDONMENT PLAN
SHEET NO. 11	MANHOLE FRAME AND COVER (SANITARY SEWER)
SHEET NO. 12	PRECAST SANITARY SEWER MANHOLE
SHEET NO. 13	MANHOLE ADJUSTMENT DETAILS
SHEET NO. 14-16	SOIL EROSION BMP DETAILS

FEBRUARY 2015

PLANS PREPARED BY
PROFESSIONAL ENGINEERING CONSULTANTS, P.A.
ENGINEERS
WICHITA, KANSAS





Contractor shall coordinate gas line abandonment and gas meter removal with KGS.

4" Force Main (to be abandoned in place) See Key Map for limits.

SANITARY SEWER LINE NO. 1 See sheet no. 9.

Remove existing wood fence in its entirety.

Contractor shall coordinate removal of Buried Electric and Electrical Panel with Westar Energy.

SCALE: 1" = 10'



□ = CAP OR MASONRY PLUG TO BE INSTALLED.

---X---X---X--- = FORCE MAIN TO BE REMOVED/ABANDONED IN PLACE.

---□---□---□--- = SILT FENCE BARRIER

Lift Station (6150-LS#19)
 Top = 1385.63
 E = 1371.93 8" (N) (Stub)
 E = 1374.23 8" PVC (S)
 E = 1374.13 8" PVC (E)
 E or top = 1375.63 4" SI

Remove existing Concrete Pad.

Remove and Salvage Existing Generator to City.

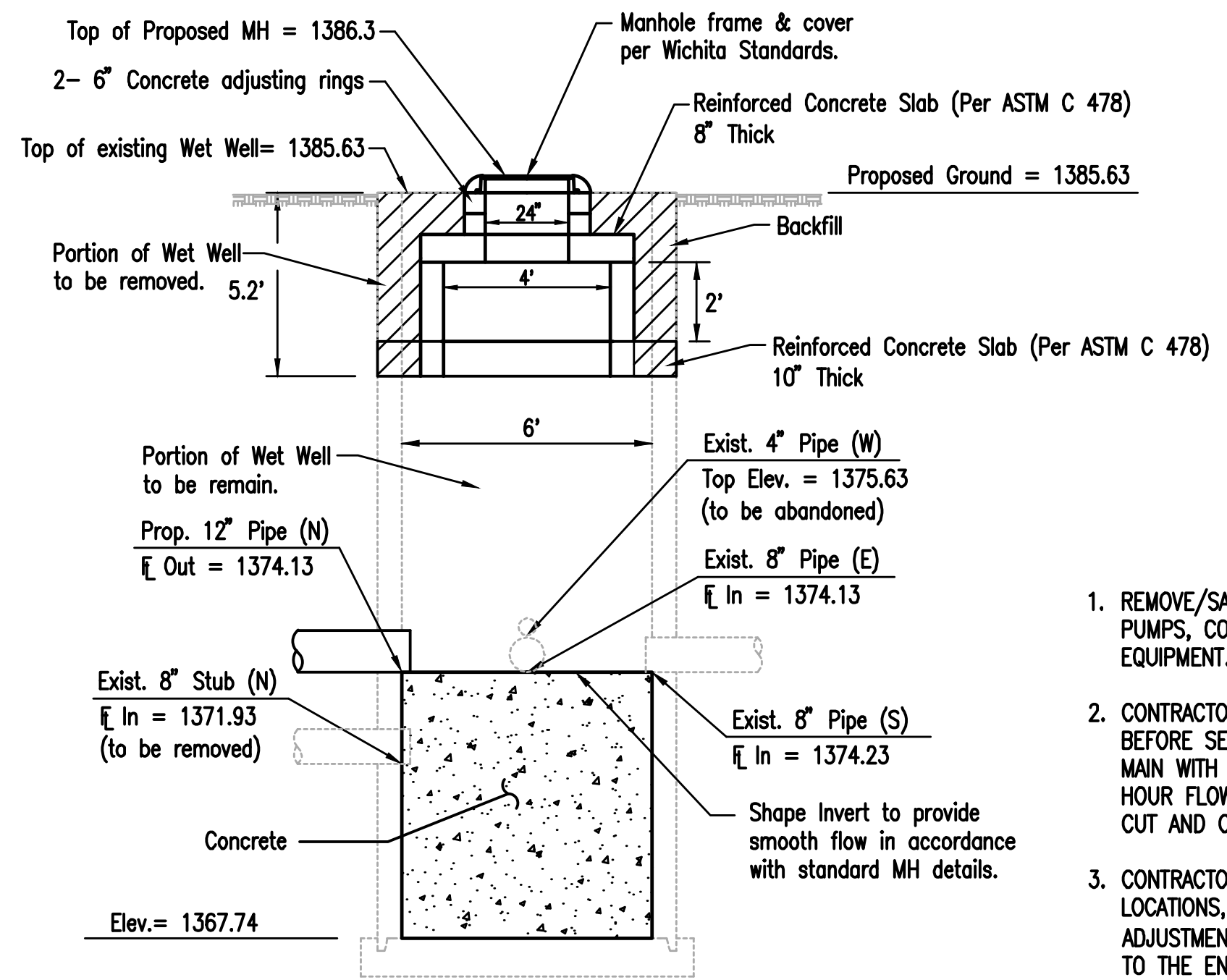
Remove and Salvage Existing Telemetry Tower to City.

Existing Wet Well to be converted to MH. Pump Station to be Salvaged to City. See detail this sheet.

Cut and Cap existing 4" Force Main. * Remove Valves and Salvage to City. Abandon in place existing 4" Force Main. See sheet no. 2 for continuation.

Remove existing wood fence in its entirety.

Remove existing Asphalt Drive.



WET WELL CONVERSION

N.T.S.

NOTE: CONTRACTOR SHALL CLEAN WET WELL AND DISPOSE OF SOLIDS AND OTHER MATERIALS IN A MANNER AS APPROVED BY THE ENGINEER PRIOR TO SHAPING INVERT.

WET WELL CONVERSION NOTES

1. REMOVE/SALVAGE ALL PIPING, FITTINGS, VALVES, PIPE COUPLINGS, PUMPS, CONTROL PANEL, ELECTRICAL PANEL, GENERATOR, AND EQUIPMENT.
2. CONTRACTOR SHALL REMOVE 5 L.F. FROM EXISTING FORCE MAIN, BEFORE SEALING PIPE, CONTRACTOR SHALL THOROUGHLY FLUSH FORCE MAIN WITH CLEAN WATER AND SHALL AVOID FLUSHING DURING PEAK HOUR FLOWS. ONCE FORCE MAIN IS CLEANED, BOTH ENDS SHALL BE CUT AND CAPPED WITH CI MJ CAPS.
3. CONTRACTOR SHALL VERIFY ALL EXISTING HORIZONTAL AND VERTICAL LOCATIONS, PIPE TYPE, AND SIZE PRIOR TO CONSTRUCTION. ANY ADJUSTMENT TO NEW PIPE LOCATIONS/ROUTING SHALL BE REPORTED TO THE ENGINEER FOR APPROVAL.

DEMOLITION NOTES

1. PRIOR TO BEGINNING ANY SALVAGE/DEMOLITION WORK, THE CONTRACTOR SHALL CONTACT THE UTILITY COMPANIES (WESTAR ENERGY, ETC.) AND REQUEST THAT ALL UTILITY SERVICE BE DISCONNECTED. ANY COSTS INCURRED BY THE UTILITY COMPANIES SHALL BE PAID BY THE CONTRACTOR.
2. LIFT STATION CONCRETE PAD SHALL BE REMOVED BY THE CONTRACTOR.
3. CONCRETE RUBBLE, OTHER DEBRIS, AND UNSALVAGEABLE MATERIALS SHALL BE DISPOSED AS APPROVED AND DIRECTED BY THE CITY ENGINEER.
4. STRUCTURES AND FOOTINGS TO BE ABANDONED SHALL BE COMPLETELY REMOVED TO AN ELEVATION OF 3' BELOW FINISHED GRADE. THE BOTTOM OF THE STRUCTURE SHALL BE BROKEN TO ALLOW FOR DRAINAGE, AND THE REMAINING PORTION OF THE ABANDONED STRUCTURES SHALL BE BACKFILLED WITH SAND OR FLOWABLE FILL TO AN ELEVATION OF 2' BELOW GRADE. THE TOP 2' OF THE EXCAVATION SHALL BE BACKFILLED WITH COMPACTED MATERIAL SIMILAR TO THE ADJACENT SURFACE TO 95% OF ASTM D698.
5. AFTER BACKFILLING, THE ENTIRE SITE DISTURBED BY DEMOLITION SHALL BE CLEARED OF ALL DEBRIS, CONCRETE RUBBLE, ETC., GRADED TO DRAIN, AND RESEEDED.
6. ALL WORK DESCRIBED ABOVE AND ANY INCIDENTAL WORK NECESSARY SHALL BE CONSIDERED SUBSIDIARY TO THE LUMP SUM PRICE BID FOR "LIFT STATION ABANDONMENT/REMOVAL".
7. THE CONTRACTOR SHALL COORDINATE WITH MICHAEL TULLIS AT (316) 303-8713 CONCERNING ITEMS TO BE SALVAGED. ANY ITEMS TO BE SALVAGED SHALL BE CLEANED AND DELIVERED TO THE CITY. ITEMS TO BE DISPOSED OF AS DIRECTED BY THE CITY SHALL BE DISPOSED OF IN AN ACCEPTABLE LOCATION.
8. ALL ABANDONMENT AND REMOVAL OF EXISTING STRUCTURES, MATERIAL AND PIPING SHALL BE INCLUDED IN THE LUMP SUM PRICE BID FOR "LIFT STATION ABANDONMENT/REMOVAL". ALSO INCLUDED IN THE LUMP SUM PRICE BID FOR THIS ITEM SHALL BE MAINTAINING WASTEWATER FLOWS.
9. PRIOR TO ANY LIFT STATION OR FORCE MAIN ABANDONMENT OR REMOVAL THE CONTRACTOR SHALL GIVE 48 HOURS (MIN.) NOTICE TO THE CITY. CONTACT DEB AERY AT (316) 268-4614.
10. CONTRACTOR SHALL NOT DIVERT ANY SEWAGE FLOW THROUGH NEW PIPE OR MANHOLES UNTIL TESTING HAS BEEN COMPLETED AND ACCEPTED.

11. CONTRACTOR SHALL VISIT THE LIFT STATION SITE AND BECOME FAMILIAR WITH THE EXISTING LIFT STATION AND EQUIPMENT AND SUBSEQUENT DEMOLITION PRIOR TO BIDDING.
 12. CONTRACTOR SHALL COORDINATE TRANSFORMER, UTILITY POLE REMOVAL WITH THE PROPER UTILITY.
- WESTAR ENERGY:**
 ZACHARY LAWS (DISTRIBUTION) (316) 261-6264
 GREG ROY (TRANSMISSION) (785) 575-8167
- AT&T:**
 JASON EDWARDS
 (316) 268-2008
13. CONTRACTOR SHALL DEMO EXISTING ASPHALT DRIVE, WOOD FENCE, FENCE POST, AND CONCRETE SURROUNDING EXISTING LIFT STATION. CONTRACTOR SHALL RESTORE DISTURBED AREA WITH TOP SOIL PREPARATION, SEEDING, MULCH AND/OR RESEEDING. ALL SEEDING/SODDING WORK SHALL BE IN ACCORDANCE WITH CITY OF WICHITA STANDARD SPECIFICATION AND THE CITY OF WICHITA ADMINISTRATIVE REGULATION NO. AT6.5 WHICH GOVERNS CLEAN UP AND RESTORATION OR REPLACEMENT FOLLOWING CONSTRUCTION. ALL COSTS FOR THIS WORK SHALL BE SUBSIDIARY TO THE LUMP SUM BID FOR "SITE RESTORATION".
 14. PRIOR TO ABANDONING REMAINING FORCE MAIN, CONTRACTOR SHALL THOROUGHLY FLUSH PIPES. COSTS FOR FLUSHING SHALL BE CONSIDERED SUBSIDIARY TO THE LUMP SUM PRICE BID FOR "MANHOLE AND PIPE ABANDONMENT".
 15. ALL ASPHALT AND CONCRETE PAVEMENT REMOVAL SHALL BE INCLUDED IN THE LUMP SUM PRICE BID FOR "LIFT STATION ABANDONMENT/REMOVAL".

LIFT STATION ABANDONMENT DETAIL

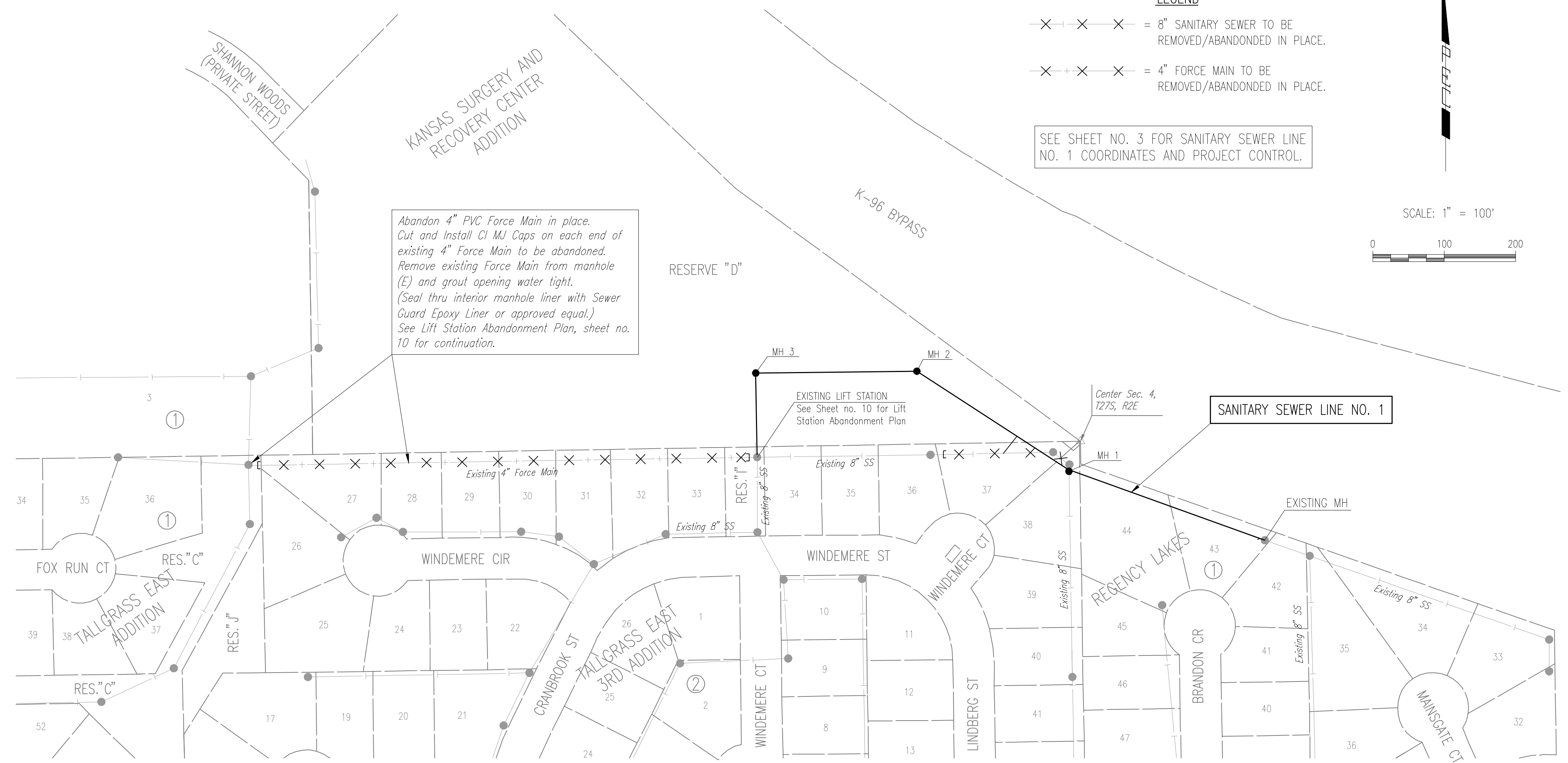
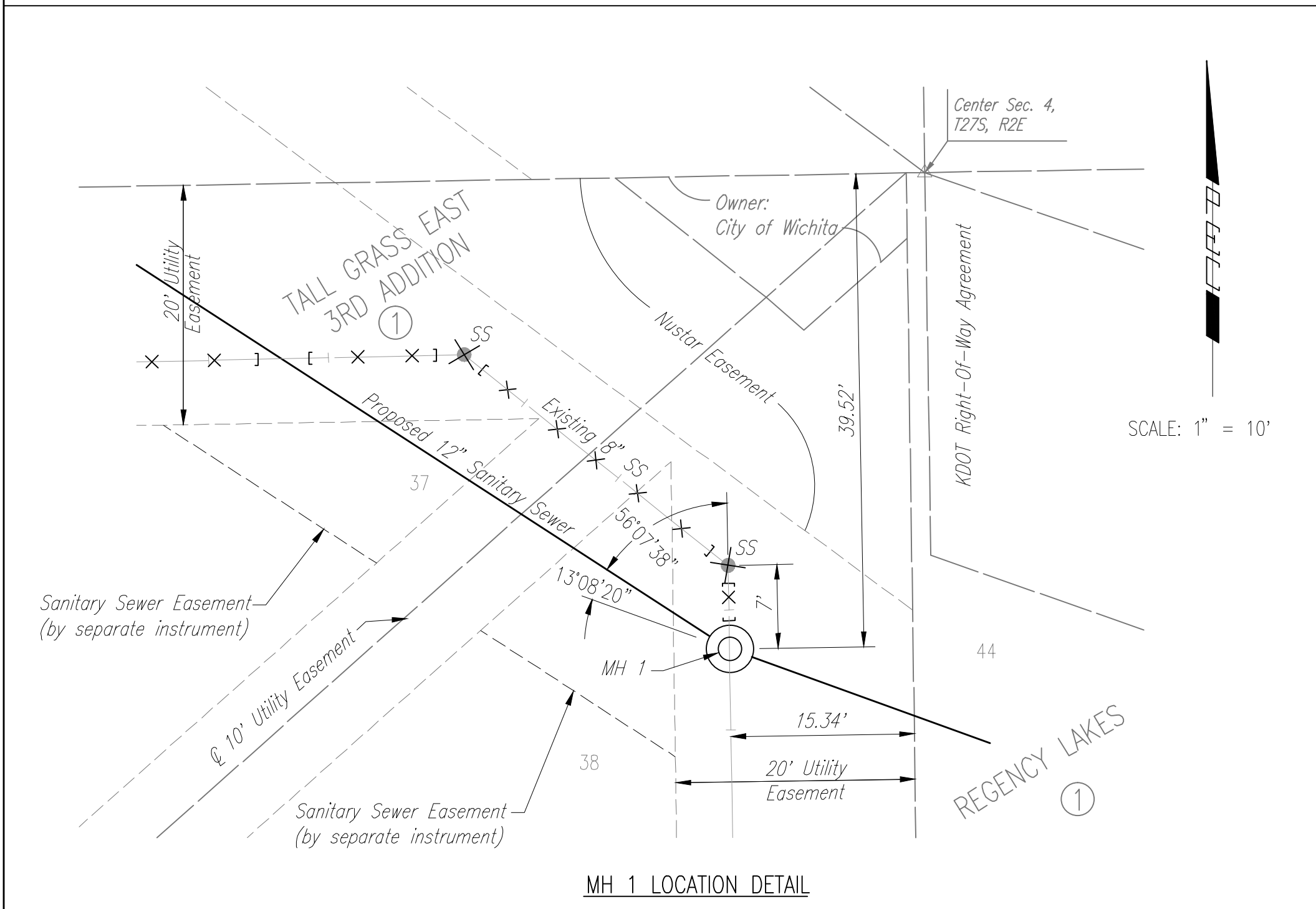
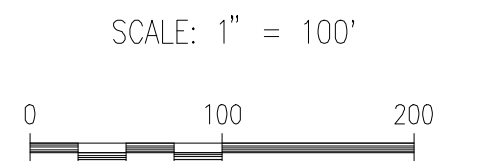
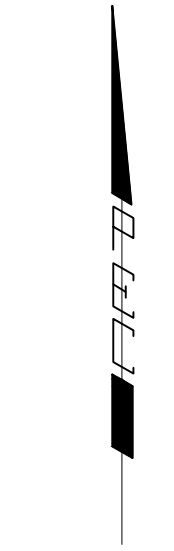
* Existing 4" Force Main to be Abandoned in place shall be sandfilled, removed where conflict with proposed.

	No.	Revision	By	Date
	WINDEMERE LIFT STATION ABANDONMENT AND SANITARY SEWER EXTENSION			
	LIFT STATION ABANDONMENT PLAN			
	GARY JANZEN, P.E. - CITY ENGINEER CITY OF WICHITA PROJECT NO. 468-84938			
DESIGNED BY: CSB, SAD		JOB NO.: 35-13650-0042		SHEET 10 OF 16
DRAWN BY: CSL, KTD		DATE: NOVEMBER 2013		

Served 01-15-2015 3:29:34 PM by CSI
 Plot Scale 1:1 02-03-2015 2:00:18 PM by CSI
 02/03/2015 13:650\000\13650-C10-LIFT STATION ABANDONMENT

- LEGEND**
- X — X — X — = 8" SANITARY SEWER TO BE REMOVED/ABANDONED IN PLACE.
 - X — X — X — = 4" FORCE MAIN TO BE REMOVED/ABANDONED IN PLACE.

SEE SHEET NO. 3 FOR SANITARY SEWER LINE NO. 1 COORDINATES AND PROJECT CONTROL.

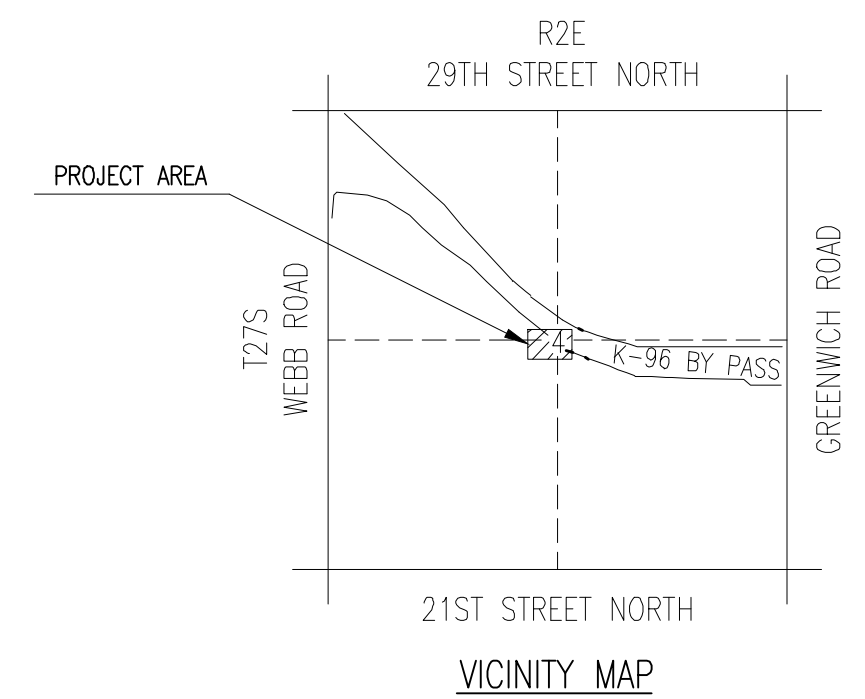


GENERAL NOTES

1. ALL CONSTRUCTION AND MATERIALS TO COMPLY WITH CITY OF WICHITA SPECIFICATIONS AND STANDARDS.
2. ALL ELEVATIONS SHOWN ARE NAVD 88 DATUM.
3. CONTRACTOR WILL BE REQUIRED TO PROVIDE A MINIMUM ADVANCE NOTICE OF SEVENTY-TWO (72) HOURS TO UTILITY COMPANIES PRIOR TO STARTING ANY EXCAVATION AS FOLLOWS:
 KANSAS ONE-CALL 687-2470 or 811
 THE CONTRACTOR MUST NOTIFY THE FOLLOWING IN CASE OF AN EMERGENCY:
 EMERGENCY DISPATCH 911
 COX COMMUNICATIONS 800-778-9140
 KANSAS GAS SERVICE 888-482-4950
 WESTAR ENERGY 800-383-1183
 BLACK HILLS ENERGY 800-694-8989
 AT&T 800-286-8313
 WICHITA WATER UTILITIES (SS AND WL) 262-6000
 NUSTAR 773-9000
4. THE CONTRACTOR SHALL LIMIT THE EXTENT OF TRENCH TO REMAIN OPEN OVERNIGHT AND WEEKENDS TO LESS THAN 50 FEET.
5. AT LEAST 72 HOURS PRIOR TO BEGINNING EXCAVATION (EXCLUDING WEEKENDS AND HOLIDAYS), THE CONTRACTOR SHALL CONTACT THE KANSAS ONE-CALL SYSTEM, A UTILITY LOCATION SERVICE, AT (316) 687-2470 OR 811 TO REQUEST THE LOCAL UTILITY COMPANIES MARK ANY EXISTING LINES WITHIN THE PROJECT AREA.
6. UNDERGROUND UTILITY SERVICE LINES AND OVERHEAD UTILITY POLE LINES ARE TO BE ADJUSTED AS NECESSARY BY OTHERS PRIOR TO CONSTRUCTION UNLESS THE DRAWINGS SPECIFICALLY CALL FOR THEIR ADJUSTMENT BY THE CONTRACTOR OR UNLESS THE DRAWINGS SPECIFICALLY IDENTIFY A UTILITY TO BE ADJUSTED BY ITS OWNER DURING CONSTRUCTION. EXISTING UTILITIES AND THEIR LOCATIONS, AS SHOWN ON THE DRAWINGS, REPRESENT THE BEST INFORMATION OBTAINABLE FOR THE DESIGN. THE CONTRACTOR WILL BE REQUIRED TO WORK AROUND EXISTING UTILITIES WITHIN THE RIGHT-OF-WAY WHICH DO NOT CONFLICT WITH PROPOSED CONSTRUCTION.
7. THE CONTRACTOR SHALL BE RESPONSIBLE FOR PRESERVING PROPERTY IRONS. THE CONTRACTOR WILL BE REQUIRED TO RE-ESTABLISH ANY PROPERTY IRONS WHICH ARE DAMAGED OR DESTROYED BY HIS CONSTRUCTION OPERATIONS. SUCH IRONS SHALL BE RE-ESTABLISHED BY A LICENSED LAND SURVEYOR IN ACCORDANCE WITH STATE LAWS. ALL COSTS FOR THIS WORK SHALL BE SUBSIDIARY TO THE LUMP SUM PRICE BID FOR "SITE RESTORATION".
8. CONTRACTOR SHALL PROVIDE POSITIVE DRAINAGE AWAY FROM ALL MANHOLE COVERS.
9. MANHOLES SHALL BE TYPE "P" MANHOLES. MANHOLES SHALL BE CONSTRUCTED IN ACCORDANCE WITH CITY OF WICHITA SPECIFICATIONS AND THE STANDARD DETAIL DRAWINGS.

10. RUBBLE FROM THE REMOVAL OF MISCELLANEOUS STRUCTURES INCLUDING ANY TREES REMOVED, TREE TRIMMINGS, AND EXCESS EXCAVATION WHICH IS TO BE WASTED SHALL BE DISPOSED OF ON SITES PROVIDED BY THE CONTRACTOR. THESE SITES SHALL ALSO BE APPROVED BY THE ENGINEER AS TO SUITABILITY, APPEARANCE, AND SITE LOCATION. LOCATIONS THAT, IN THE OPINION OF THE ENGINEER, WILL LEAVE AN UNSIGHTLY APPEARANCE WILL NOT BE APPROVED. ALL DISPOSAL SITES MUST BE APPROVED BY THE KANSAS DEPARTMENT OF HEALTH AND ENVIRONMENT. MATERIAL EITHER STOCKPILED OR DISPOSED OF IN A FLOOD PLAIN WILL REQUIRE A KANSAS STATE BOARD OF AGRICULTURE PERMIT. ANY MATERIAL DUMPED IN WATERS OF THE UNITED STATES OR WETLANDS IS SUBJECT TO U.S. CORPS OF ENGINEERS PERMITTING REGULATIONS. ANY MATERIAL BURIED OR STOCKPILED BEYOND APPROVED CONSTRUCTION LIMITS MAY REQUIRE ARCHAEOLOGICAL INVESTIGATIONS UNLESS BURIED IN A PREVIOUSLY APPROVED DISPOSAL LOCATION.
11. ALL LAWN/TURF AREAS DISTURBED BY CONSTRUCTION OF THE PROPOSED IMPROVEMENTS SHALL BE RESTORED WITH THE SAME GRASS/SOD AS EXISTING. RESTORATION OF DISTURBED AREAS SHALL INCLUDE, BUT NOT BE LIMITED TO, TOP SOIL PREPARATION, SEEDING, MULCH, AND/OR RESEEDING. ALL SEEDING/SODDING WORK SHALL BE IN ACCORDANCE WITH THE CITY OF WICHITA STANDARD SPECIFICATIONS AND THE CITY OF WICHITA ADMINISTRATIVE REGULATION NO. AR6.5 WHICH GOVERNS CLEANUP AND RESTORATION OR REPLACEMENT FOLLOWING CONSTRUCTION. ALL COSTS FOR THIS WORK SHALL BE SUBSIDIARY TO THE LUMP SUM PRICE BID FOR "SITE RESTORATION".
12. THE CONTRACTOR SHALL SEED ALL AREAS DISTURBED BY CONSTRUCTION ACTIVITIES WITH TEMPORARY RYE GRASS. RYE GRASS SEED SHALL BE PLANTED AT A MINIMUM RATE OF SIX (6) POUNDS PER ONE THOUSAND (1,000) SQUARE FEET. THIS TEMPORARY SEEDING MAY BE OMITTED ONLY IF OTHER SEEDING IS REQUIRED IN ACCORDANCE WITH GENERAL NOTE NO. 11 ABOVE. TEMPORARY SEEDING OR PERMANENT SEEDING/SODDING SHALL BE APPLIED WITHIN 14 DAYS AFTER THE AREA HAS BEEN DISTURBED.
13. THE CONTRACTOR SHALL AVOID REMOVAL OR TRIMMING OF ANY TREES OR SHRUBS WHERE POSSIBLE. WHERE THE CONTRACTOR BELIEVES THE REMOVAL OR TRIMMING IS UNAVOIDABLE, HE SHALL COORDINATE SUCH WORK WITH THE ENGINEER. COSTS FOR TREE/SHRUB REMOVAL AND TRIMMING REGARDLESS OF SIZE SHALL BE CONSIDERED SUBSIDIARY TO THE LUMP SUM PRICE BID FOR "SITE CLEARING".
14. THE CONTRACTOR SHALL PREVENT ANY CONSTRUCTION DEBRIS FROM ENTERING THE EXISTING SANITARY SEWER DURING CONSTRUCTION.
15. THE CONTRACTOR SHALL GIVE ALL PROPERTY OWNERS AND/OR TENANTS OF DEVELOPED PROPERTY ABUTTING THE CONSTRUCTION OF THIS PROJECT A MINIMUM OF TEN (10) DAYS ADVANCE NOTICE PRIOR TO START OF CONSTRUCTION.
16. THE CONTRACTOR IS REQUIRED TO MAINTAIN CONTINUOUS FLOW OF SEWAGE IN EXISTING MAINS AT ALL TIMES.
17. THE CONTRACTOR SHALL NOT BURY MANHOLES THAT HAVE RIM ELEVATIONS WHICH ARE LOWER THAN EXISTING GROUND AT THE MANHOLE. THE GROUND AROUND SUCH MANHOLES AND ALONG THE SEWER ALIGNMENT SHALL BE BACKFILLED TO THE APPROXIMATE ELEVATION OF THE PROPOSED GROUND ELEVATION SHOWN ON THE PLAN/PROFILE SHEETS. THE CONTRACTOR SHALL PROVIDE DRAINAGE AWAY FROM THESE MANHOLES AND SEWER LINES BY CONSTRUCTION OF TEMPORARY DITCHES OR SLOPING THE GROUND AS REQUIRED. ALL COSTS FOR THIS WORK SHALL BE CONSIDERED SUBSIDIARY TO THE INSTALLED BID PRICE FOR MANHOLES OR PIPE.
18. THE CONTRACTOR SHALL PROVIDE MOUNDING EARTH AT MANHOLES AND CLEANOUTS THAT HAVE TOP ELEVATIONS GREATER THAN 1 FOOT ABOVE EXISTING GRADE, AS SHOWN ON THE DRAWINGS. COSTS FOR MOUNDING SHALL BE CONSIDERED SUBSIDIARY TO THE PRICE BID PER EACH FOR MANHOLES.

19. INTERURBAN TRAFFIC GENERATED OUTSIDE THE PROJECT AREA AND LOCAL BUSINESS OR RESIDENTIAL TRAFFIC GENERATED WITHIN THE PROJECT AREA ARE TO BE CARRIED THROUGH CONSTRUCTION AS FURTHER PROMULGATED BY PROJECT SPECIAL PROVISIONS. THE CONTRACTOR SHALL UTILIZE BARRICADES, SIGNS, GUARDS, AND FLAGMEN IN ACCORDANCE WITH THE MANUAL ON UNIFORM TRAFFIC CONTROL DEVICES.
20. THE CONTRACTOR SHALL INSTALL AND/OR MAINTAIN EROSION CONTROL METHODS AS SPECIFIED ON SHEETS 14-16. THE FOLLOWING QUANTITIES ARE ESTIMATED, AND SHOULD BE CONSIDERED THE MINIMUM EFFORT REQUIRED. THE GENERAL LOCATION OF THE REQUIRED EROSION CONTROL IS ILLUSTRATED ON THE PLANS SHEETS. THE SANITARY SEWER CONTRACTOR SHALL BE RESPONSIBLE FOR MAINTAINING THE EROSION CONTROL SHOWN THROUGH THE COMPLETION OF THIS PROJECT. INSTALLATION OF THESE BMP'S DOES NOT RELIEVE THE CONTRACTOR OF THE RESPONSIBILITY OF ABATING SOIL EROSION.
 SILT FENCE BARRIER 793 L.F.
 CONSTRUCTION ENTRANCE 1 EA.
21. CONTRACTOR SHALL THOROUGHLY FLUSH EXISTING FORCE MAINS TO BE ABANDONED IN PLACE PRIOR TO CUTTING AND INSTALLING CI MJ CAPS.
22. ANY OVER EXCAVATIONS FROM MANHOLE AND PIPE REMOVAL SHALL BE BACKFILLED WITH JETTED SAND BACKFILL PER THE CITY OF WICHITA STANDARD SPECIFICATIONS.
23. ALL COSTS FOR MANHOLE OR PIPE ABANDONMENT OR REMOVAL SHALL BE INCLUDED IN THE PRICE BID FOR "MANHOLE AND PIPE ABANDONMENT". ABANDONMENT OR REMOVAL INCLUDING ANY PLUGS OR CAPS REQUIRED SHALL BE INCLUDED IN THE LUMP SUM BID.
24. EACH BIDDER SHALL VISIT THE SITE OF THE PROJECT BEFORE SUBMITTING THE PROPOSAL FOR THIS WORK SO THAT HE WILL BE FULLY INFORMED OF THE EXISTING FIELD CONDITIONS AND THE OBSTACLES WHICH MIGHT BE ENCOUNTERED. UPON AWARD OF THE CONTRACT THE CONTRACTOR WILL NOT BE GRANTED ANY ADDITIONAL COMPENSATION WITH REGARDS TO TIME AND MONEY FOR CONDITIONS THAT MAY HAVE BEEN EVALUATED DURING ANY INSPECTION OF THE SITE.
25. WHEN REMOVING/ABANDONING SANITARY SEWER LINES AS SHOWN IN THE PLANS, THE CONTRACTOR SHALL THOROUGHLY FLUSH AND CAP OR PLUG THE ENDS OF THE PIPES REMAINING IN PLACE PRIOR TO REMOVAL/ABANDONMENT. ALL COSTS FOR THE REMOVAL/ABANDON OF EXISTING SANITARY SEWER LINES AS PART OF CONSTRUCTION SHALL BE CONSIDERED SUBSIDIARY TO THE LUMP SUM PRICE BID FOR "MANHOLE AND PIPE ABANDONMENT".
26. WHERE THE IMPROVEMENTS CROSS EXISTING PUBLIC OR PRIVATE UTILITIES WHICH ARE NOT TO BE ADJUSTED BY OTHERS, THE CONTRACTOR SHALL PROVIDE THE MATERIAL AND MEANS TO PROTECT AND SUPPORT SAID UTILITIES DURING CONSTRUCTION TO THE SATISFACTION OF THE ENGINEER.



Sowed: 02-03-2015 1:48:39 PM by KURTIS DEKAT
 Plot Scale: 1" = 100' 02-03-2015 1:59:39 PM by KURTIS DEKAT
 QA: 2/3/15 1:36:50 PM by KURTIS DEKAT

MICHAEL D. KEYS
 LICENSED
13944
 02/03/2015
 KANSAS
 PROFESSIONAL ENGINEER

No.	Revision	By	Date

WINDEMERE LIFT STATION ABANDONMENT AND SANITARY SEWER EXTENSION

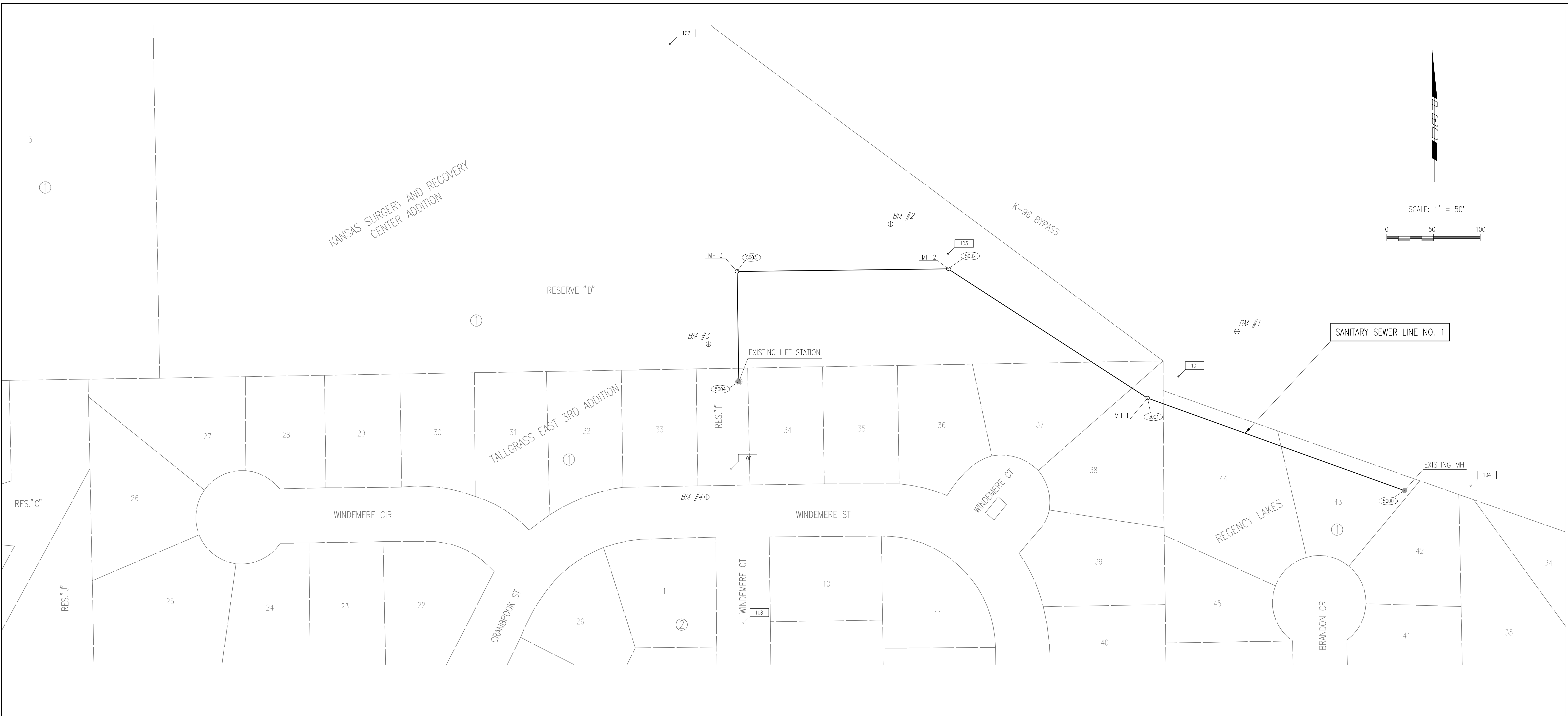
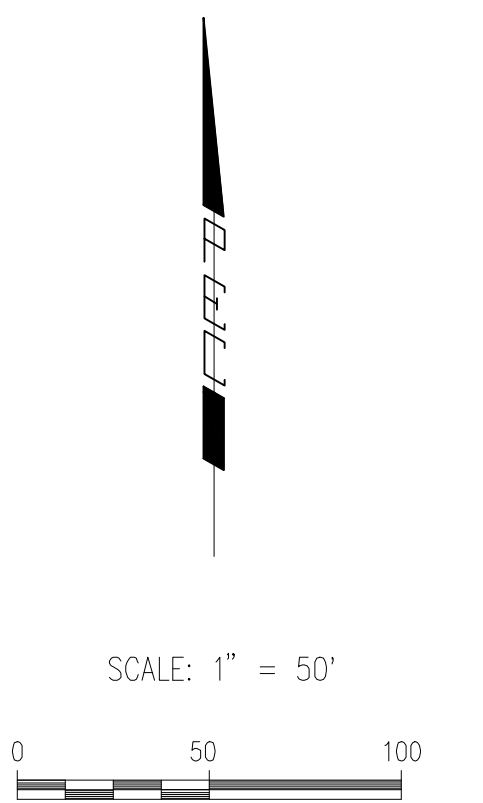
KEY MAP AND GENERAL NOTES

GARY JANZEN, P.E. - CITY ENGINEER
 CITY OF WICHITA PROJECT NO. 468-84938

PEC PROFESSIONAL ENGINEERING CONSULTANTS, P.A.
 303 SOUTH TOPEKA WICHITA, KS 67202
 316-262-2691 www.pec1.com

Designed by	CSB, SAD	Job No.	35-13650-0042
Drawn by	CSL, KTD	Date	NOVEMBER 2013

Sht. 2 of 16



CONTROL POINTS

Pt. No. 101
 N: 1,702,176.2882, E: 1,683,347.4268
 PK NAIL IN ASPHALT BIKE PATH
 1. 24' EAST TO PK FROM WOOD FENCE POST.
 2. 12.35' NE TO K-96 RIGHT-OF-WAY FENCE.
 3. 36.60' SW TO CENTER OF MANHOLE.

Pt. No. 102
 N: 1,702,531.2369, E: 1,682,804.4946
 PK NAIL IN ASPHALT BIKE PATH
 1. 1.30' SOUTH TO SOUTH EDGE OF PAVEMENT.
 2. 100' NW ALONG BIKE PATH UNTIL YOU ARE IN LINE WITH "Y" POWER POLE TO THE SOUTH.
 3. 51.80' NNE TO BRACE POST OF K-96 RIGHT-OF-WAY FENCE

Pt. No. 103
 N: 1,702,306.6689, E: 1,683,101.1309
 1/2" REBAR IN ASPHALT BIKE PATH
 1. 65' WEST TO CENTER OF RCB.
 2. 39.80' SSE TO THE TOP CENTER OF PIPE LINE MARKER.
 3. 2.0' TO THE SOUTH EDGE OF BIKE PATH

Pt. No. 104
 N: 1,702,059.5626, E: 1,683,659.6458
 1/2" REBAR IN ASPHALT BIKE PATH
 1. 28.10' TO CENTER OF MANHOLE
 2. 25.10' TO TOP CENTER OF TV PED.
 3. 1.80' TO SOUTH EDGE OF BIKE PATH.
 4. 27.15' OF 60D NAIL IN T-POST K-96 RIGHT-OF-WAY.

Pt. No. 106
 N: 1,702,077.3771, E: 1,682,869.9668
 1/2" REBAR IN ASPHALT DRIVE, ON NORTH SIDE OF WINDEMERE STREET, LOCATED IN CENTER OF DRIVE TO SANITARY SEWER LIFT STATION
 1. 27.0' TO BACK OF CURB.
 2. 12.35' TO CENTER OF MANHOLE.
 3. 33.55' TO STORM DRAIN INLET

Pt. No. 108
 N: 1,701,912.5314, E: 1,682,882.3769
 PK NAIL IN ASPHALT ROADWAY, @ WINDEMERE COURT
 1. IN LINE WITH SOUTH SIDE OF HOUSE# 10207.
 2. IN LINE WITH SOUTH SIDE CONCRETE DRIVE WEST SIDE.

BENCH MARK LIST

BM #1
 CHISELED SQUARE ON WEST SIDE OF CONCRETE BASE OF "Y" HIGH-LINE POWER POLE IN SOUTHWEST DITCH OF K-96 RIGHT-OF-WAY, BETWEEN WEB ROAD AND GREENWICH ROAD.
 ELEV.=1379.45 (NAVD88)

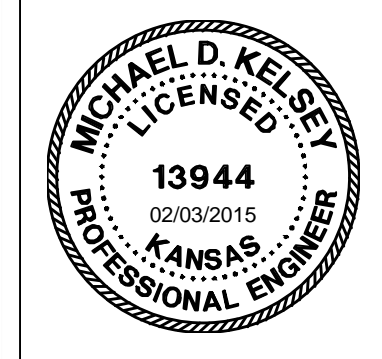
BM #2
 CHISELED SQUARE ON SOUTHEAST END OF SOUTHWEST HEADWALL FOR RCBC, UNDER BIKE PATH NORTH OF TALLGRASS EAST 3RD ADDITION.
 ELEV.=1384.05 (NAVD88)

BM #3
 CHISELED SQUARE ON EAST END OF HEADWALL FOR DRAINAGE PIPE OUTFALL STRUCTURE, NORTH OF LIFT STATION, NORTH OF TALLGRASS EAST 3RD ADDITION.
 ELEV.=1383.885 (NAVD88)

BM #4
 CHISELED SQUARE ON FRONT-CENTER OF CURB INLET SOUTH OF LIFT STATION, NORTHWEST OF WINDEMERE STREET AND WINDEMERE COURT.
 ELEV.=1386.235 (NAVD88)

SANITARY SEWER LINE NO. 1				
POINT	NORTH	EAST	STATION	DESCRIPTION
5000	1,702,054.5230	1,683,589.0030	0+00.0	Existing MH
5001	1,702,153.1696	1,683,314.8107	2+91.4	MH 1
5002	1,702,291.1135	1,683,101.7949	5+45.2	MH 2
5003	1,702,288.5155	1,682,876.1099	7+70.9	MH 3
5004	1,702,170.7559	1,682,877.9473	8+88.7	Existing Wet Well

5000 = COORDINATE POINT NO.



No.	Revision	By	Date
WINDEMERE LIFT STATION ABANDONMENT AND SANITARY SEWER EXTENSION BUBBLE MAP GARY JANZEN, P.E. - CITY ENGINEER CITY OF WICHITA PROJECT NO. 468-84938			
		PROFESSIONAL ENGINEERING CONSULTANTS, P.A. 303 SOUTH TOPEKA WICHITA, KS 67202 316-262-2691 www.pec1.com	
Designed by	CSB, SAD	Job No.	35-13650-0042
Drawn by	CSL, KTD	Date	NOVEMBER 2013
			Sht. 3 of 16

Served 01-15-2015 3:26:59 PM by: CSL
 Plot Scale 1:1 02-03-2015 1:59:42 PM by: CSL
 01/20/15 1:36:50\000\13650-03-BUBBLE.MXD

TALLGRASS EAST 3RD ADDITION

TO WICHITA, SEDGWICK COUNTY, KANSAS

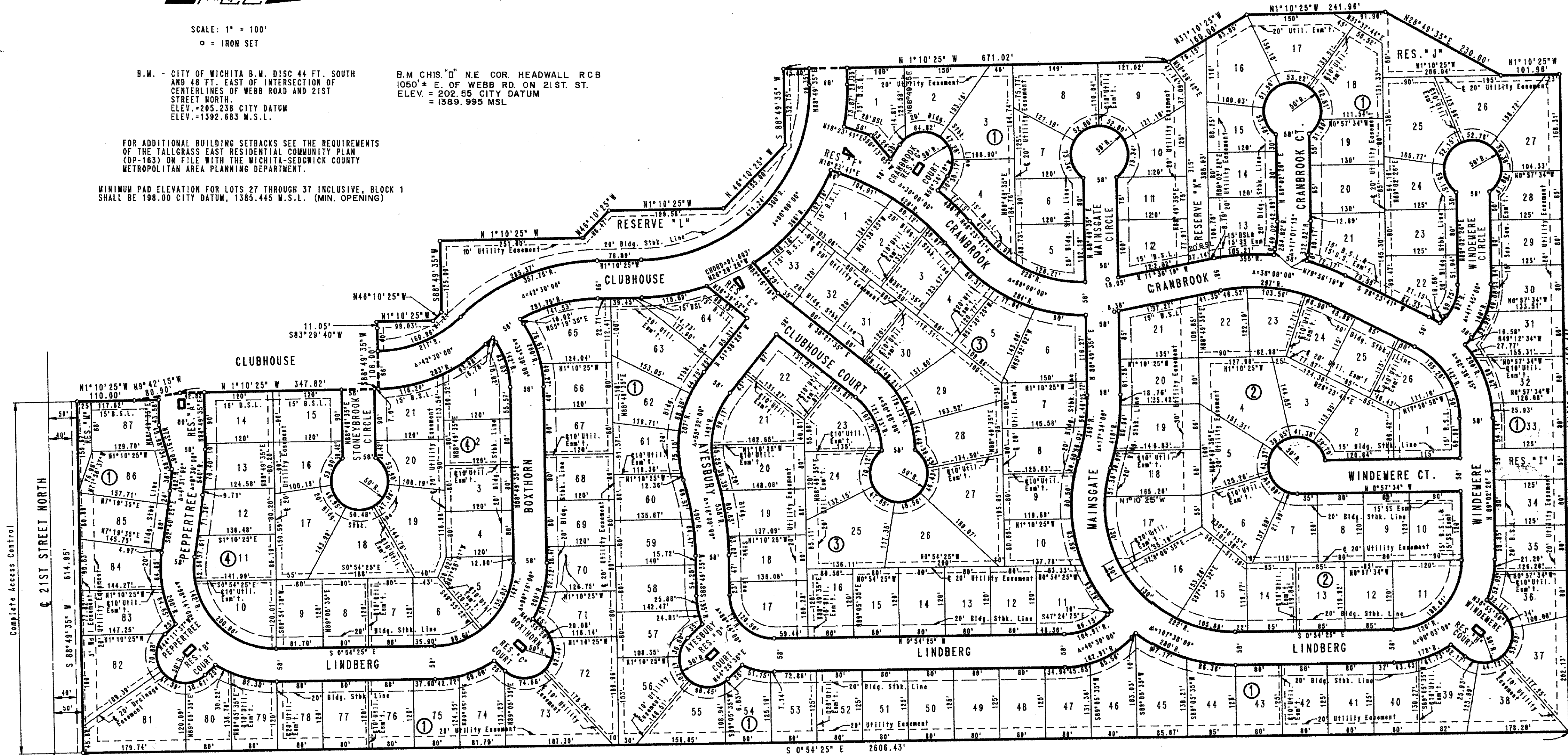
SCALE: 1" = 100'
 ○ = IRON SET

B.M. - CITY OF WICHITA B.M. DISC 44 FT. SOUTH AND 48 FT. EAST OF INTERSECTION OF CENTERLINES OF WEBB ROAD AND 21ST STREET NORTH.
 ELEV. = 205.238 CITY DATUM
 ELEV. = 1392.683 M.S.L.

B.M. CHIS. "D" N.E. COR. HEADWALL RCB 1050' ± E. OF WEBB RD. ON 21ST ST.
 ELEV. = 202.55 CITY DATUM
 = 1389.995 MSL

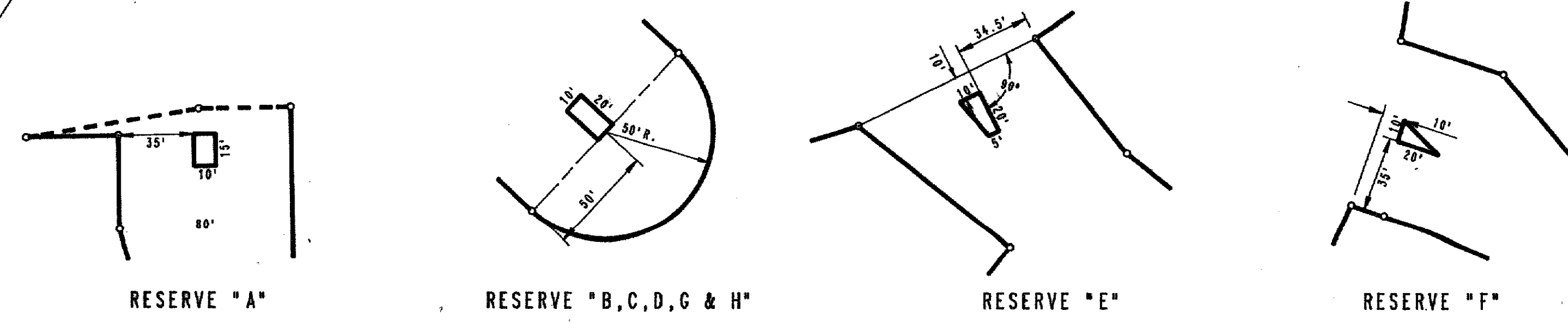
FOR ADDITIONAL BUILDING SETBACKS SEE THE REQUIREMENTS OF THE TALLGRASS EAST RESIDENTIAL COMMUNITY PLAN (CP-163) ON FILE WITH THE WICHITA-SEDGWICK COUNTY METROPOLITAN AREA PLANNING DEPARTMENT.

MINIMUM PAD ELEVATION FOR LOTS 27 THROUGH 37 INCLUSIVE, BLOCK 1 SHALL BE 198.00 CITY DATUM, 1385.445 M.S.L. (MIN. OPENING)



S.E. COR. S.W. 1/4 SEC. 4, T27S, R2E OF THE 6TH P.M.

N.E. COR. S.W. 1/4 SEC. 4, T27S, R2E OF THE 6TH P.M. POINT OF BEGINNING



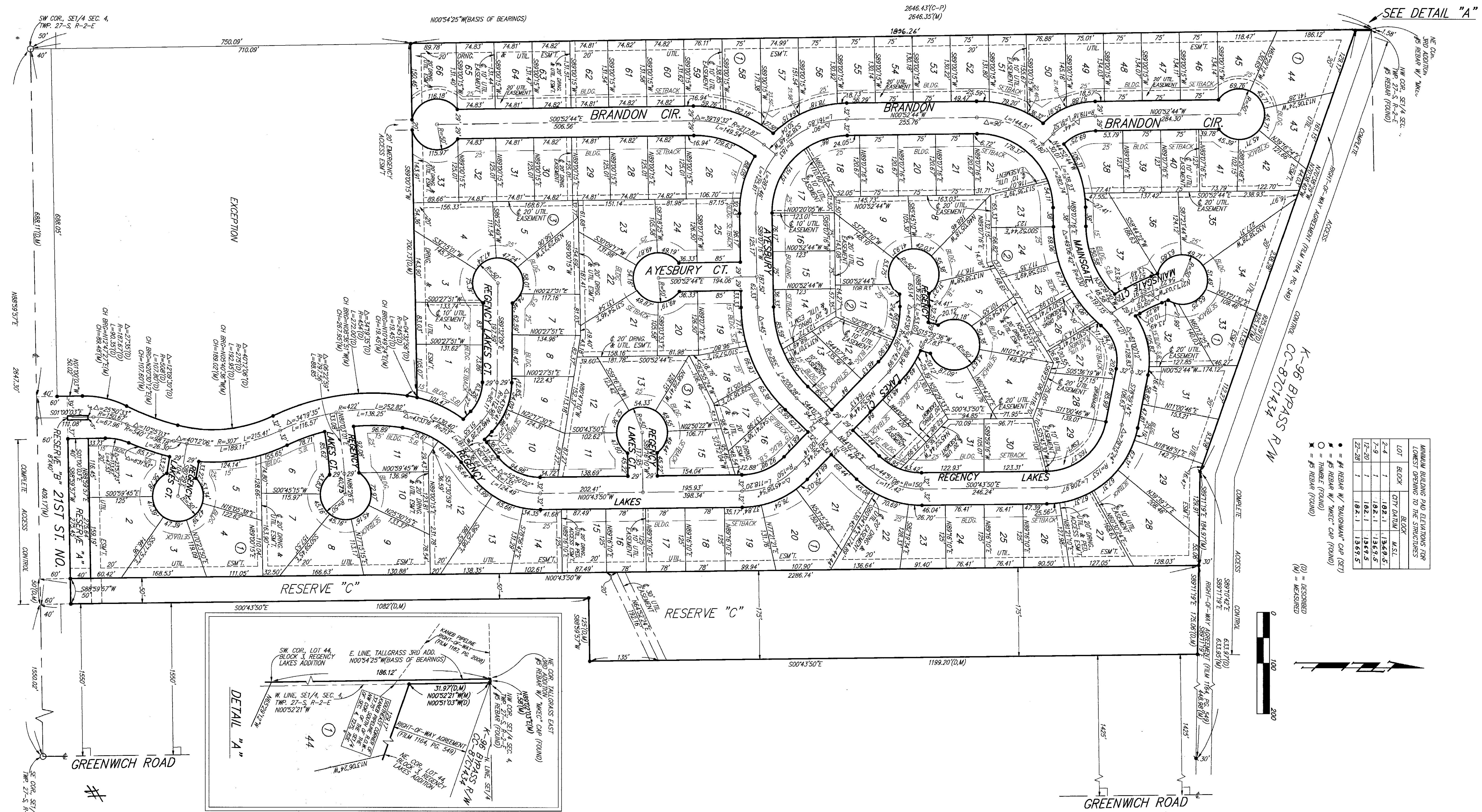
FOR INFORMATION ONLY

Sowed 03-18-2014 1:53:21 PM by GJM
 Plot Scale 1:1 02-03-2015 1:59:47 PM by GJM
 QA 2/20/15 1:36:50/00013850-004-PLAT

No.	Revision	By	Date
	WINDEMERE LIFT STATION ABANDONMENT AND SANITARY SEWER EXTENSION		
	PLAT (TALLGRASS EAST 3RD ADDITION)		
	GARY JANZEN, P.E. - CITY ENGINEER		
	CITY OF WICHITA PROJECT NO. 468-84938		
	PROFESSIONAL ENGINEERING CONSULTANTS, P.A.		
	303 SOUTH TOPEKA WICHITA, KS 67202		
	316-262-2691 www.pec1.com		
Designed by	CSB, SAD	Job No.	35-13650-0042
Drawn by	CSL, KTD	Date	NOVEMBER 2013

REGENCY LAKES

AN ADDITION TO WICHITA, SEDGWICK COUNTY, KANSAS



LOT	BLOCK	CITY DATA	BLOCK	A.S.L.
1-4	1	1.02-1	1.02-1	1.02-1
5-9	1	1.02-1	1.02-1	1.02-1
10-20	1	1.02-1	1.02-1	1.02-1
21-28	1	1.02-1	1.02-1	1.02-1

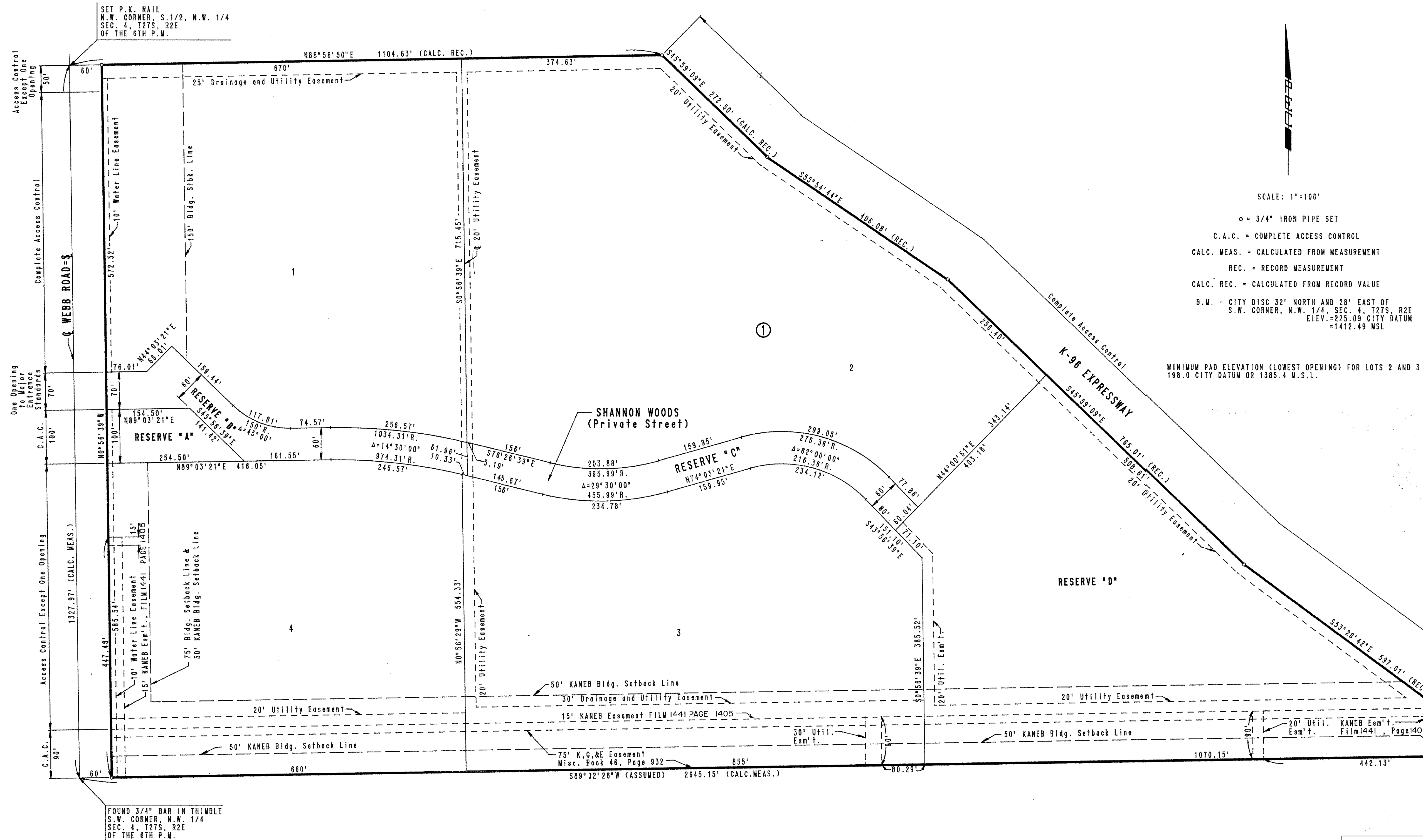
- = #4 REBAR W/ "BLINDMAN" CAP (SET)
- = #5 REBAR W/ "WICK" CAP (FOUND)
- ✱ = #5 REBAR (FOUND)
- (M) = MEASURED

FOR INFORMATION ONLY

Scaled 05-18-2014 1:58:27 PM by GLM
 Plot Scale 1:1 02-03-2015 1:59:52 PM by GLM
 Q:\2013\13650\000\13650-005-PLAT

Revision	By	Date
WINDEMERE LIFT STATION ABANDONMENT AND SANITARY SEWER EXTENSION PLAT (REGENCY LAKES) GARY JANZEN, P.E. - CITY ENGINEER CITY OF WICHITA PROJECT NO. 468-84938		
PEC PROFESSIONAL ENGINEERING CONSULTANTS, P.A. 303 SOUTH TOPEKA WICHITA, KS 67202 316-262-2691 www.pec1.com		
Designed by CSB, SAD	Job No. 35-13650-0042	Sht. 5 of 16
Drawn by CSL, KTD	Date NOVEMBER 2013	

KANSAS SURGERY AND RECOVERY CENTER ADDITION TO WICHITA, SEDGWICK COUNTY, KANSAS



SCALE: 1"=100'
 ○ = 3/4" IRON PIPE SET
 C.A.C. = COMPLETE ACCESS CONTROL
 CALC. MEAS. = CALCULATED FROM MEASUREMENT
 REC. = RECORD MEASUREMENT
 CALC. REC. = CALCULATED FROM RECORD VALUE
 B.M. - CITY DISC 32' NORTH AND 28' EAST OF
 S.W. CORNER, N.W. 1/4, SEC. 4, T27S, R2E
 ELEV. = 225.09 CITY DATUM
 = 1412.49 MSL

MINIMUM PAD ELEVATION (LOWEST OPENING) FOR LOTS 2 AND 3 SHALL BE
 198.0 CITY DATUM OR 1385.4 M.S.L.

Served 01-16-2015 10:49:12 AM by CSI
 Plot Scale 1:1 02-03-2015 1:59:57 PM by CSL
 0A\2013\13650\000\13650-006-PLAT

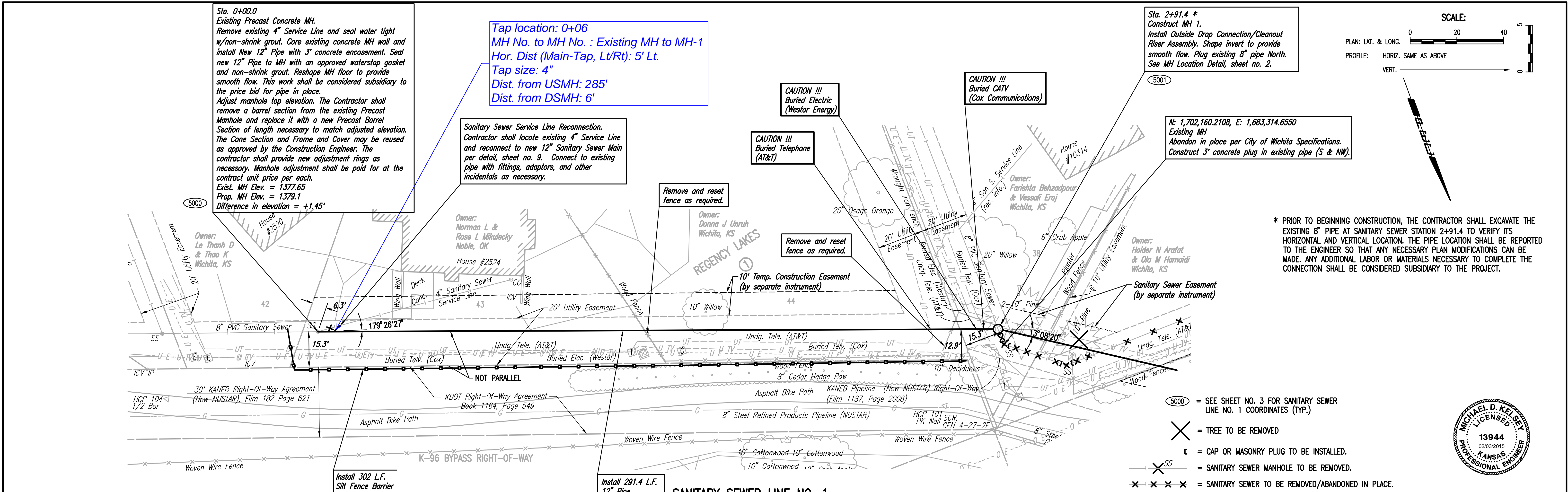
FOR INFORMATION ONLY

No.	Revision	By	Date
WINDEMERE LIFT STATION ABANDONMENT AND SANITARY SEWER EXTENSION PLAT (KANSAS SURGERY AND RECOVERY CENTER) GARY JANZEN, P.E. - CITY ENGINEER CITY OF WICHITA PROJECT NO. 468-84938			
PROFESSIONAL ENGINEERING CONSULTANTS, P.A. 303 SOUTH TOPEKA WICHITA, KS 67202 316-262-2691 www.pec1.com			
Designed by	CSB, SAD	Job No.	35-13650-0042
Drawn by	CSL, KTD	Date	NOVEMBER 2013
			Sht. 6 of 16

PLAN	CHECKED	DATE
	CHECKED	

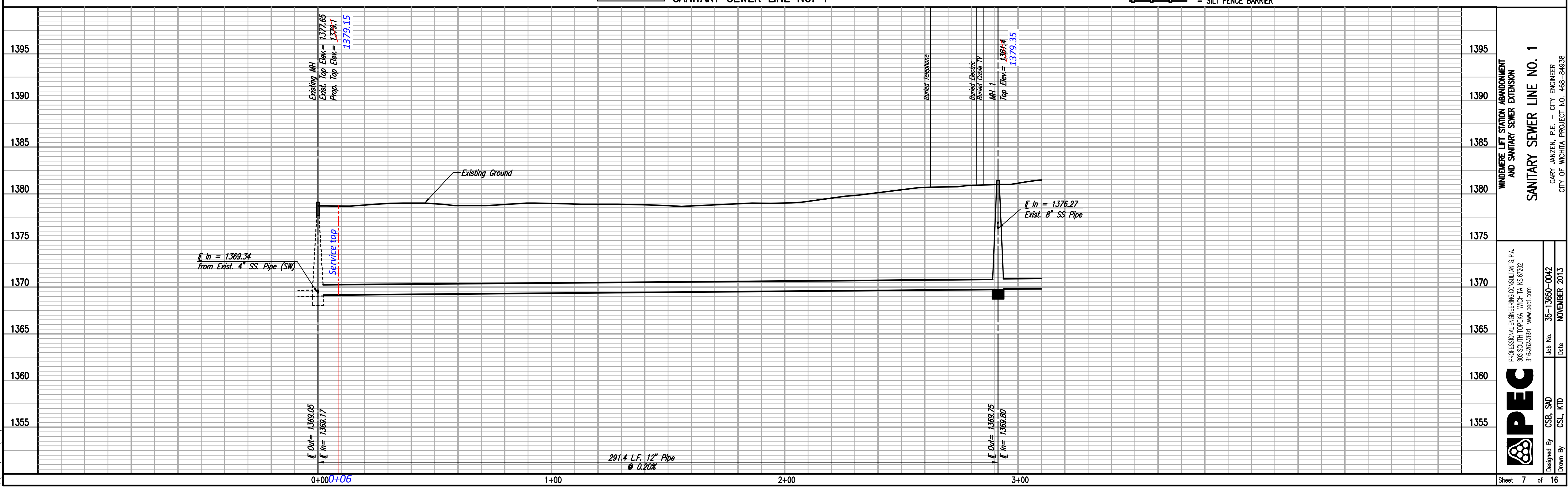
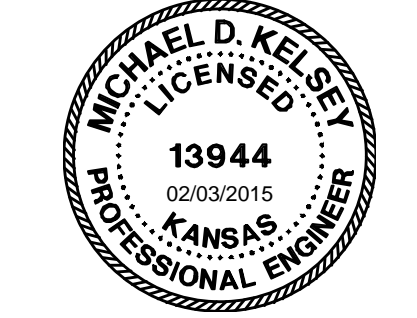
PROFILE	CHECKED	DATE
	CHECKED	

Saved: 02-03-2015 1:50:19 PM by: KURFIS,DEKAT
 Plot Scale: 1" = 10'-0" (Horizontal) 1" = 4'-0" (Vertical)
 Date: 2/3/2015 1:50:19 PM by: KURFIS,DEKAT



* PRIOR TO BEGINNING CONSTRUCTION, THE CONTRACTOR SHALL EXCAVATE THE EXISTING 8" PIPE AT SANITARY SEWER STATION 2+91.4 TO VERIFY ITS HORIZONTAL AND VERTICAL LOCATION. THE PIPE LOCATION SHALL BE REPORTED TO THE ENGINEER SO THAT ANY NECESSARY PLAN MODIFICATIONS CAN BE MADE. ANY ADDITIONAL LABOR OR MATERIALS NECESSARY TO COMPLETE THE CONNECTION SHALL BE CONSIDERED SUBSIDIARY TO THE PROJECT.

- 5000 = SEE SHEET NO. 3 FOR SANITARY SEWER LINE NO. 1 COORDINATES (TYP.)
- X = TREE TO BE REMOVED
- ⊔ = CAP OR MASONRY PLUG TO BE INSTALLED.
- SS = SANITARY SEWER MANHOLE TO BE REMOVED.
- X X X X = SANITARY SEWER TO BE REMOVED/ABANDONED IN PLACE.
- = SILT FENCE BARRIER



WINDEMERE LIFT STATION ABANDONMENT AND SANITARY SEWER EXTENSION
SANITARY SEWER LINE NO. 1
 GARY JANZEN, P.E. - CITY ENGINEER
 CITY OF WICHITA PROJECT NO. 468-84938

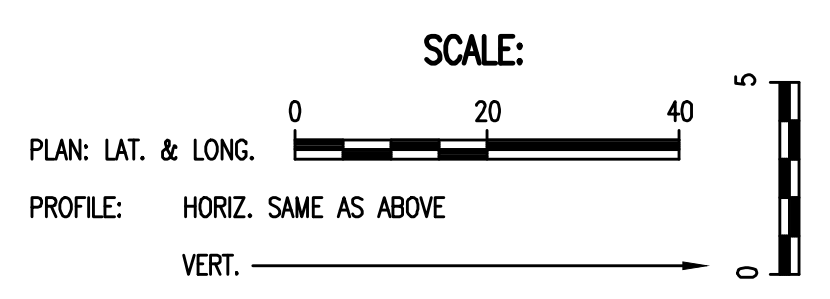
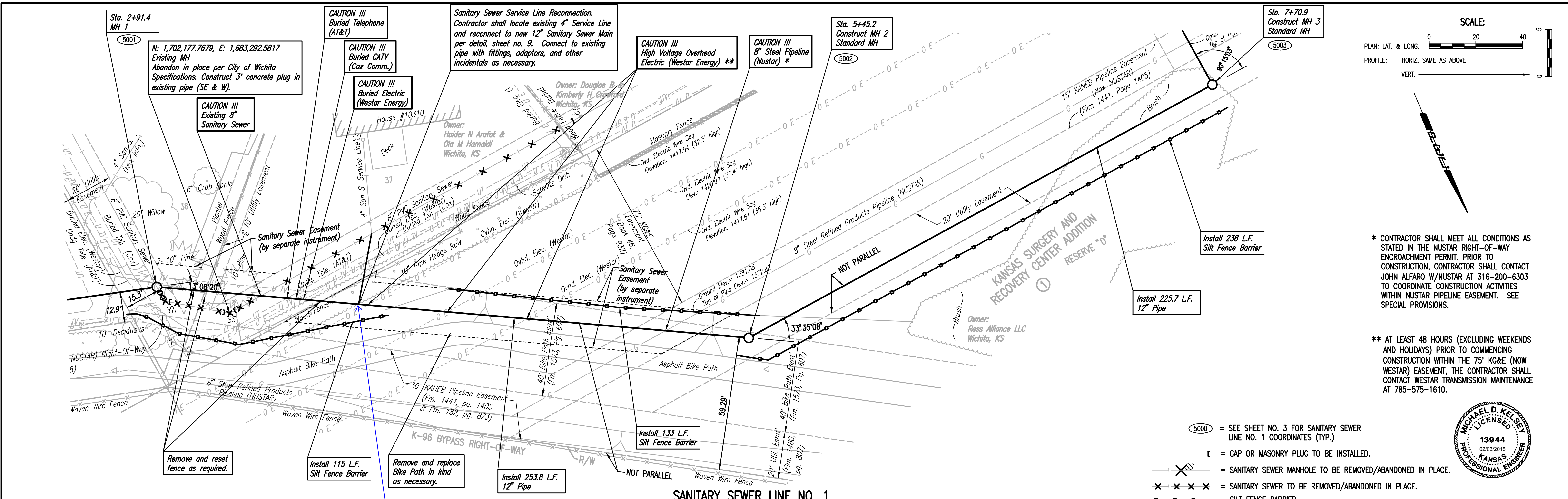
PEC
 PROFESSIONAL ENGINEERING CONSULTANTS, P.A.
 308 SOUTH TOPEKA WICHITA, KS 67202
 316-262-2691 www.pec1.com

Job No. 35-13650-0042 Date NOVEMBER 2013
 Designed By CSB, S40 Drawn By CSL, KTD

PLAN	CHECKED	DATE
	CHECKED	

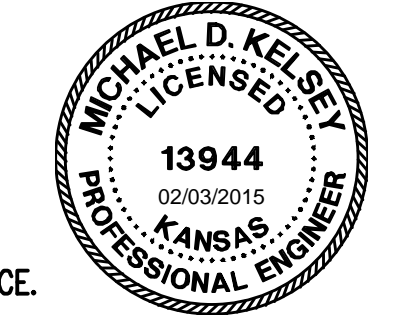
PROFILE	CHECKED	DATE
	CHECKED	

Sheet 01-15-2015 3:27:40 PM by CSI
 Plot Scale 1:1 02-03-2015 2:00:09 PM by CSI
 02/20/15 1:3650(000) 1:3650-C08-SS LINE NO. 1



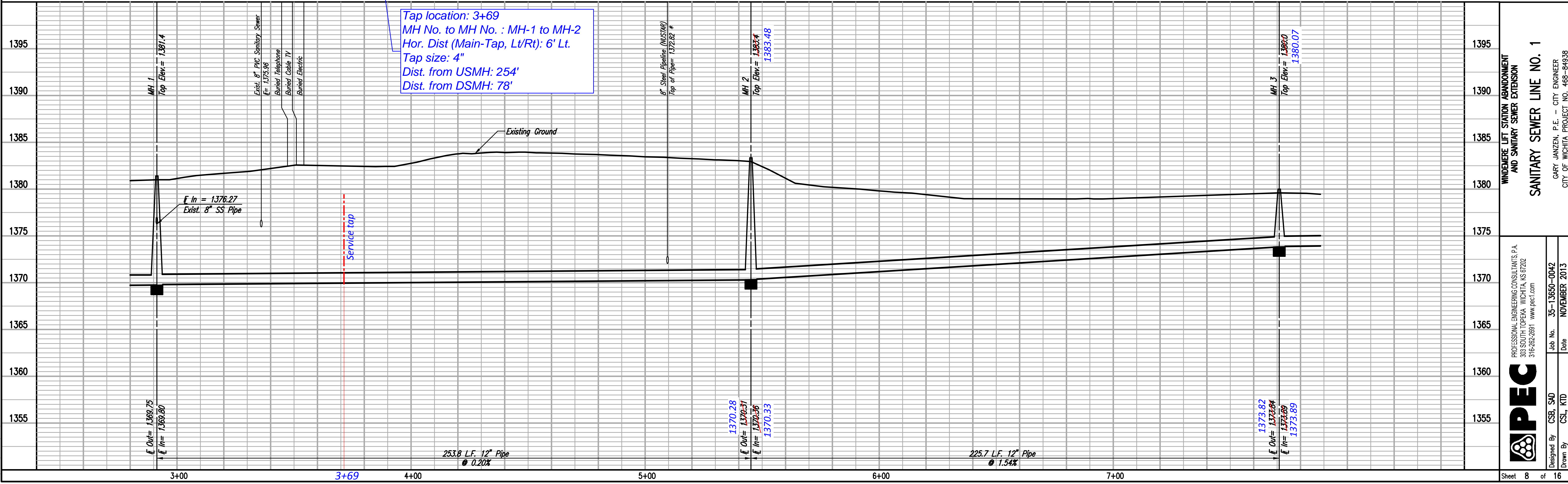
* CONTRACTOR SHALL MEET ALL CONDITIONS AS STATED IN THE NUSTAR RIGHT-OF-WAY ENCROACHMENT PERMIT. PRIOR TO CONSTRUCTION, CONTRACTOR SHALL CONTACT JOHN ALFARO W/NUSTAR AT 316-200-6303 TO COORDINATE CONSTRUCTION ACTIVITIES WITHIN NUSTAR PIPELINE EASEMENT. SEE SPECIAL PROVISIONS.

** AT LEAST 48 HOURS (EXCLUDING WEEKENDS AND HOLIDAYS) PRIOR TO COMMENCING CONSTRUCTION WITHIN THE 75' KG&E (NOW WESTAR) EASEMENT, THE CONTRACTOR SHALL CONTACT WESTAR TRANSMISSION MAINTENANCE AT 785-575-1610.



- 5000 = SEE SHEET NO. 3 FOR SANITARY SEWER LINE NO. 1 COORDINATES (TYP.)
- ⌈ = CAP OR MASONRY PLUG TO BE INSTALLED.
- ⊗ = SANITARY SEWER MANHOLE TO BE REMOVED/ABANDONED IN PLACE.
- ⊗-⊗-⊗ = SANITARY SEWER TO BE REMOVED/ABANDONED IN PLACE.
- = SILT FENCE BARRIER

SANITARY SEWER LINE NO. 1



Tap location: 3+69
 MH No. to MH No. : MH-1 to MH-2
 Hor. Dist (Main-Tap, Lt/Rt): 6' Lt.
 Tap size: 4"
 Dist. from USMH: 254'
 Dist. from DSMH: 78'

SANITARY SEWER LINE NO. 1
 WINDEMERE LIFT STATION ABANDONMENT AND SANITARY SEWER EXTENSION
 GARY JANZEN, P.E. - CITY ENGINEER
 CITY OF WICHITA PROJECT NO. 468-84938

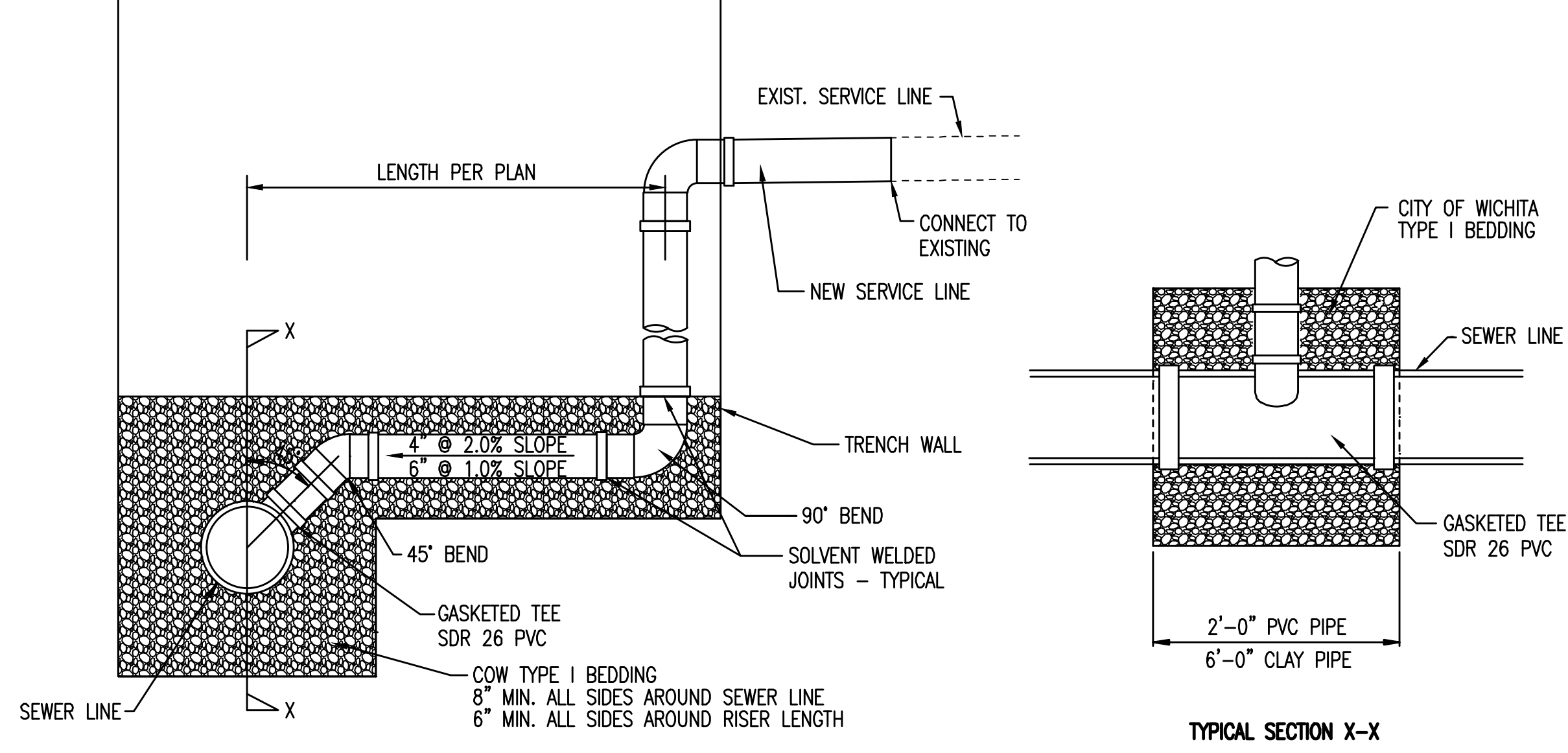
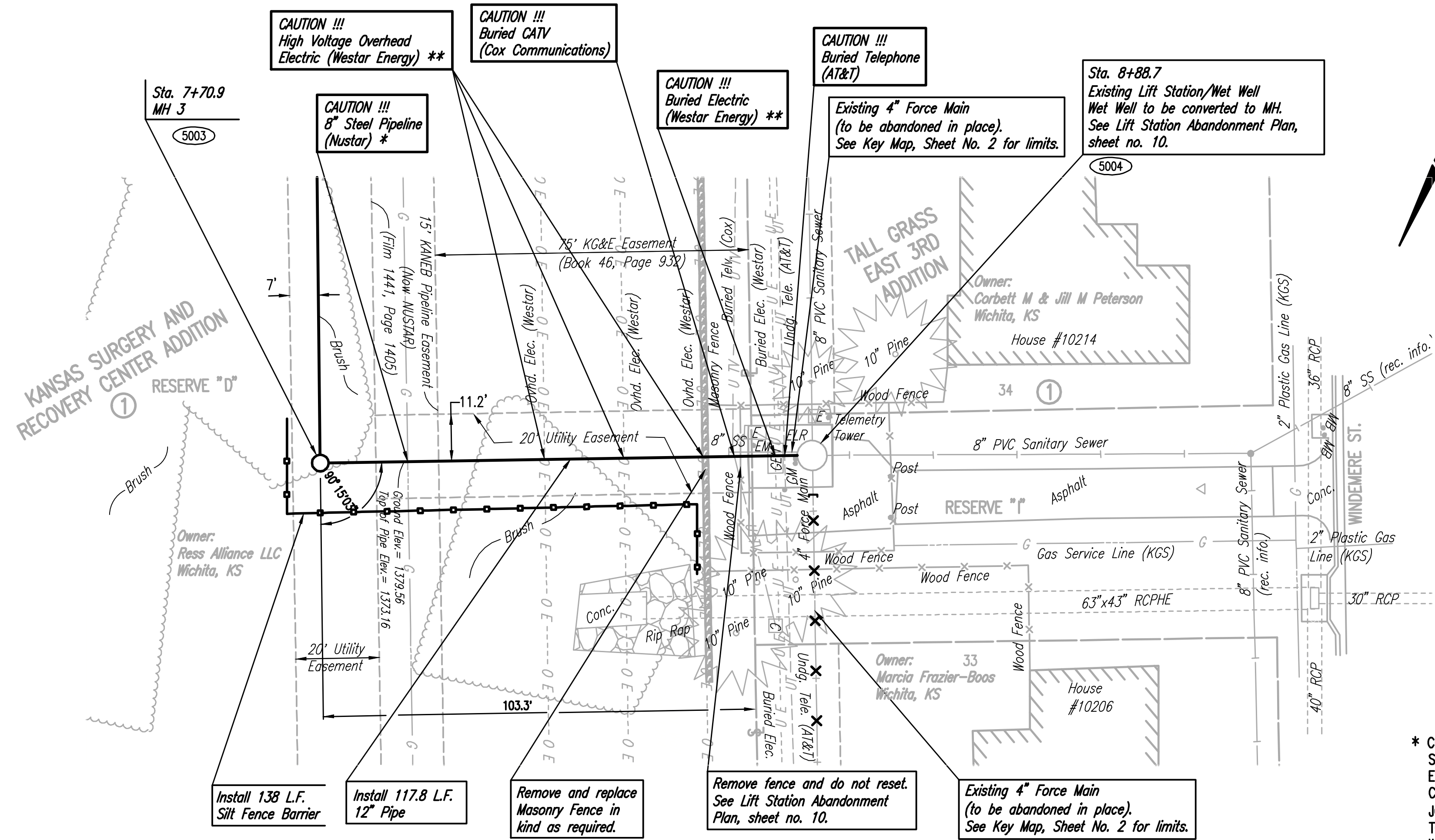
PEC
 PROFESSIONAL ENGINEERING CONSULTANTS, P.A.
 308 SOUTH TOPEKA WICHITA, KS 67202
 316-262-2691 www.pec1.com

Designed by CSB, S40
 Drawn by CSL, KTD
 Job No. 35-13650-0042
 Date NOVEMBER 2013

PLAN	CHECKED	DATE
	CHECKED	

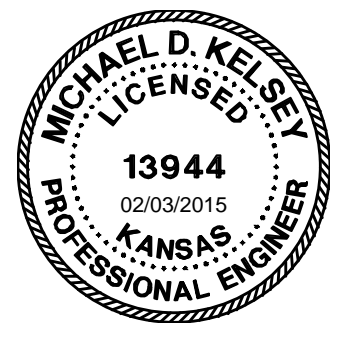
PROFILE	CHECKED	DATE
	CHECKED	

Drawn 01-15-2015 3:28:42 PM by CSI
 Plot Scale 1:1 02-03-2015 2:06:14 PM by CSI
 02/20/13 1:3650\000\13650-009-SS LINE NO. 1

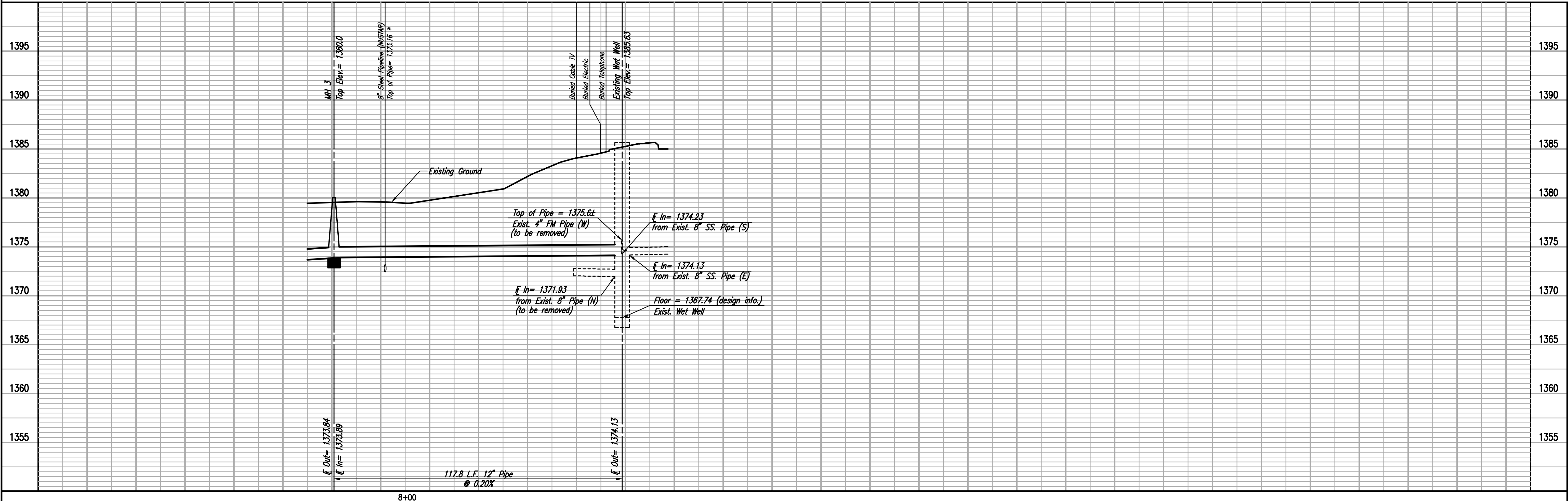


* CONTRACTOR SHALL MEET ALL CONDITIONS AS STATED IN THE NUSTAR RIGHT-OF-WAY ENCROACHMENT PERMIT. PRIOR TO CONSTRUCTION, CONTRACTOR SHALL CONTACT JOHN AFARO W/NUSTAR AT 316-200-6303 TO COORDINATE CONSTRUCTION ACTIVITIES WITHIN NUSTAR PIPELINE EASEMENT. SEE SPECIAL PROVISIONS.

- 5000 = SEE SHEET NO. 3 FOR SANITARY SEWER LINE NO. 1 COORDINATES (TYP.)
- ⌊ = CAP OR MASONRY PLUG TO BE INSTALLED.
- ⊗ = SANITARY SEWER MANHOLE TO BE REMOVED.
- ⊗-⊗-⊗-⊗ = FORCE MAIN TO BE REMOVED/ABANDONED IN PLACE.
- ⊗-⊗-⊗-⊗ = SANITARY SEWER TO BE REMOVED/ABANDONED IN PLACE.
- = SILT FENCE BARRIER



SANITARY SEWER LINE NO. 1



WINDEMERE LIFT STATION ABANDONMENT AND SANITARY SEWER EXTENSION
 SANITARY SEWER LINE NO. 1
 GARY JANZEN, P.E. - CITY ENGINEER
 CITY OF WICHITA PROJECT NO. 468-84938

DESIGNED BY: CSB, S40
 DRAWN BY: CSL, KTD
 Job No. 35-13650-0042
 Date NOVEMBER 2013
 PROFESSIONAL ENGINEERING CONSULTANTS P.A.
 308 SOUTH TOPEKA WICHITA, KS 67202
 316-262-2691 www.pec1.com