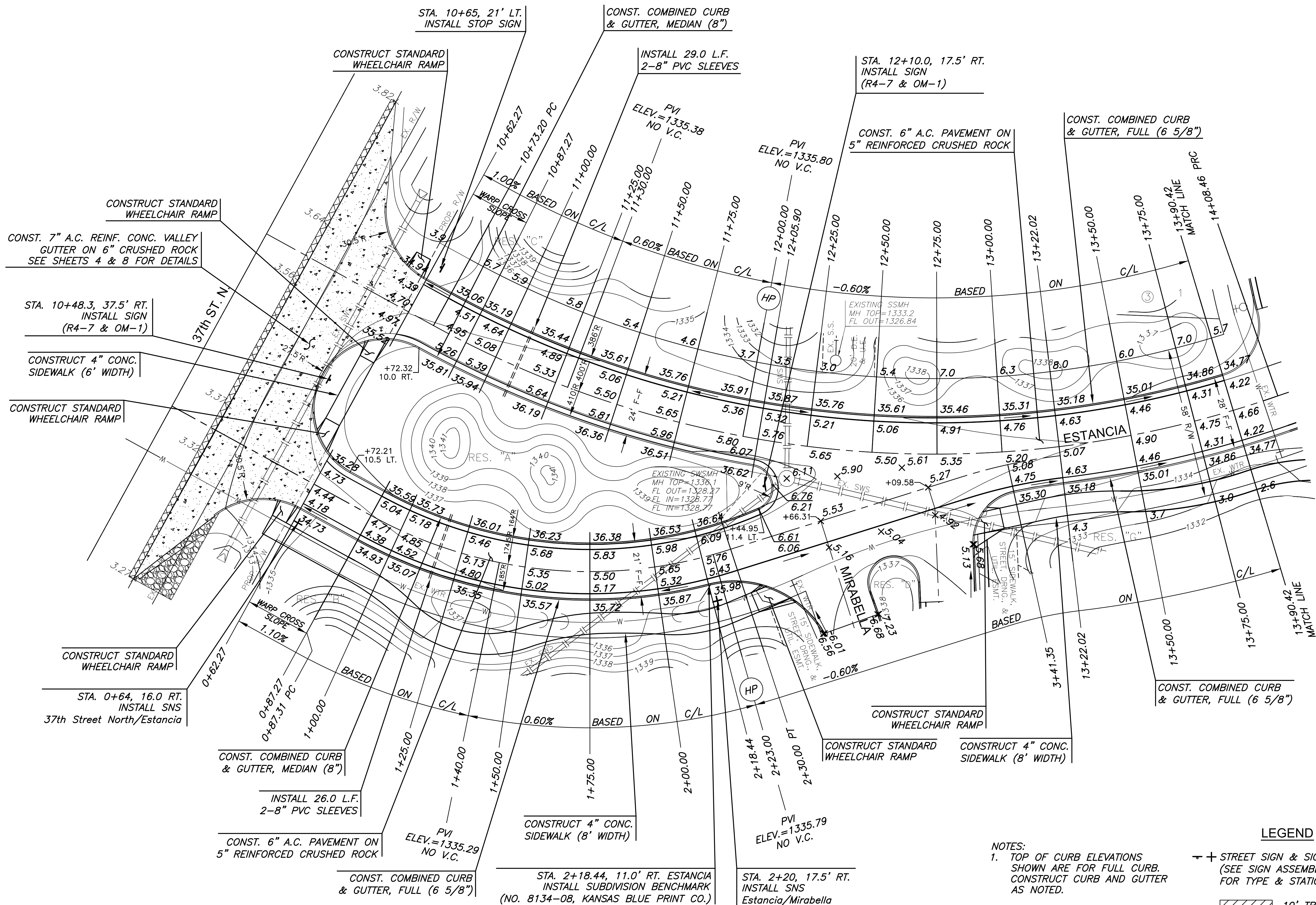


SUBDIVISION BENCH MARKS

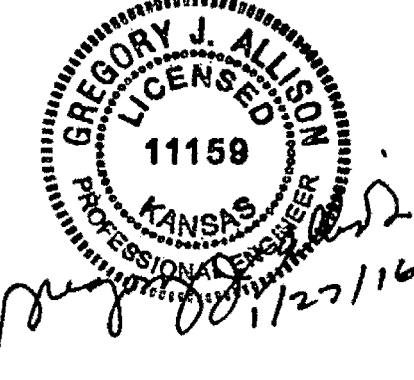
NO.	STREET AND STATION	FROM CL	DESCRIPTION	ELEVATIONS
1	ESTANCIA, STA. 2+18.44	11.0' RT	SE CURB RETURN OF ESTANCIA AND MIRABELLA	

NOTE: CONTRACTOR SHALL INSTALL SUBDIVISION BENCH MARKS ("FLAT SURVEY MARKERS NO. 8134-08 3" TOP DIAMETER" PROVIDED BY KANSAS BLUE PRINT CO., INC.) COSTS TO BE CONSIDERED SUBSIDIARY TO CONSTRUCTION OF COMBINED CURB AND GUTTER.



PAVING & INCIDENTAL DRAINAGE FOR
ESTANCIA ADDITION
PHASE 1

©2016 MKEC Engineering
All Rights Reserved
www.mkec.com
These drawings and their contents, including, but not limited to, all concepts, designs, & ideas are the exclusive property of MKEC Engineering (MKEC), and may not be used or reproduced in any way without the express consent of MKEC.



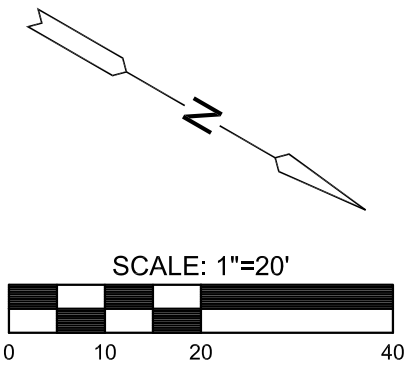
ESTANCIA

PROJECT NO.	472-85243
DATE	JAN. 2015
SCALE	1"=20'
DESIGNED	DFL
DRAWN	BKS
CHECKED	GJA

NO.	REVISION	DATE

SHEET NO.

- NOTES:**
- TOP OF CURB ELEVATIONS SHOWN ARE FOR FULL CURB. CONSTRUCT CURB AND GUTTER AS NOTED.
 - PVC SLEEVES TO BE BURIED AT A DEPTH OF 2' TO TOP OF SLEEVE, MINIMUM.
- LEGEND**
- ⊕ STREET SIGN & SIGN LOCATION (SEE SIGN ASSEMBLY TABLE FOR TYPE & STATION OF SIGN)
 - ▨ 10' TRANSITION FROM FULL TO ROLL CURB



J:\PROJECTS\2015\141010482_PREMER_ESTANCIA\05-CIVIL\CAD\PAV\RESIDENTIAL\PAV1.DWG