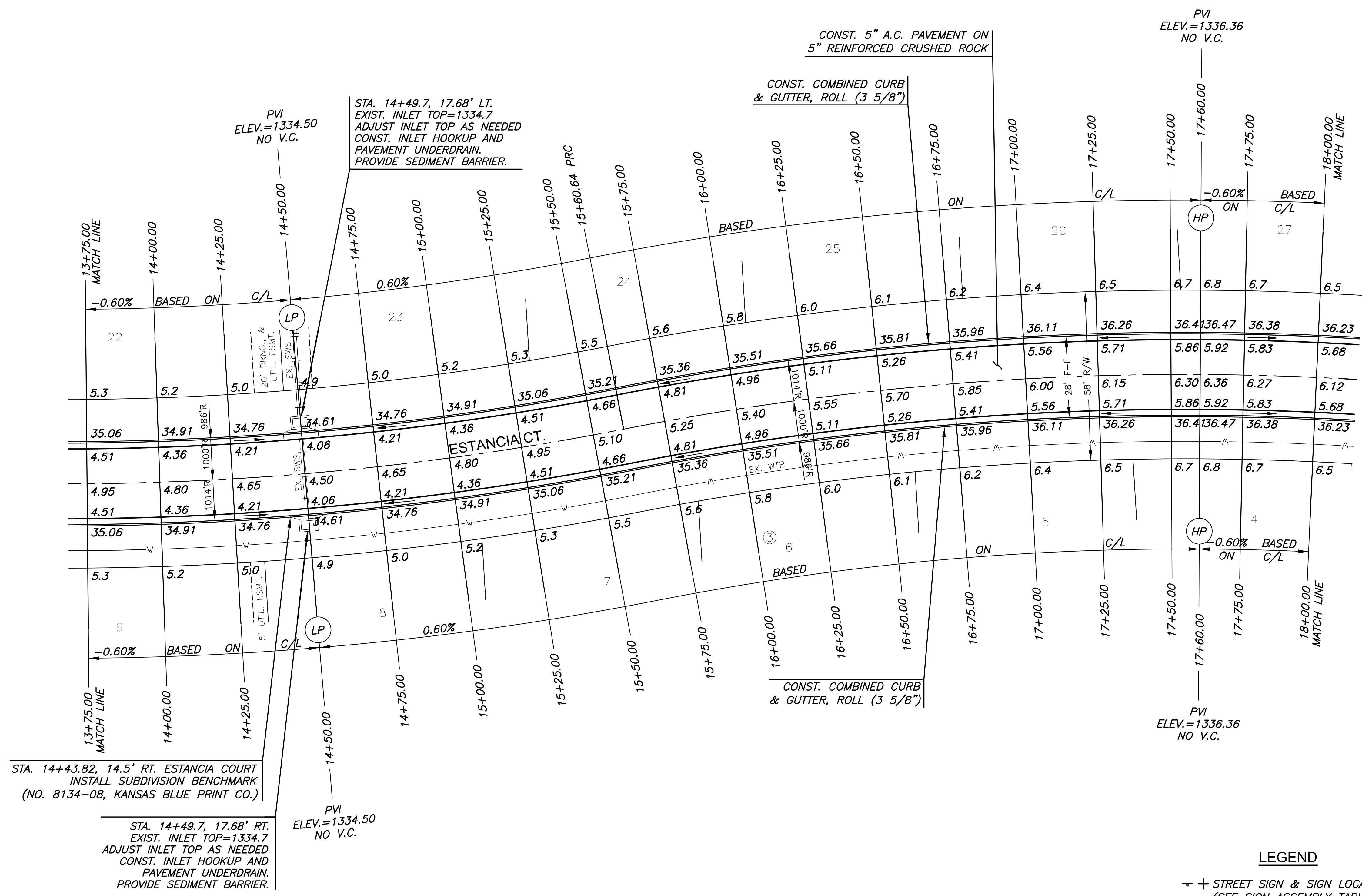


J:\PROJECTS\2011\1401010482_PREMIER_ESTANCIA\05-CIVIL\CAD\PAV\RESIDENTIAL\PH114482_PAV.DWG
 PLOTTED: Tuesday, January 26, 2016 @ 04:10PM

SUBDIVISION BENCH MARKS				
NO.	STREET AND STATION	FROM CL	DESCRIPTION	ELEVATIONS
3	ESTANCIA COURT, STA. 14+43.82	14.5' RT	TOP OF CURB AT WEST END OF INLET HOOKUP	

NOTE: CONTRACTOR SHALL INSTALL SUBDIVISION BENCH MARKS ("FLAT SURVEY MARKERS NO. 8134-08 3" TOP DIAMETER" PROVIDED BY KANSAS BLUE PRINT CO., INC.) COSTS TO BE CONSIDERED SUBSIDIARY TO CONSTRUCTION OF COMBINED CURB AND GUTTER.



STA. 14+43.82, 14.5' RT. ESTANCIA COURT
 INSTALL SUBDIVISION BENCHMARK
 (NO. 8134-08, KANSAS BLUE PRINT CO.)

STA. 14+49.7, 17.68' RT.
 EXIST. INLET TOP=1334.7
 ADJUST INLET TOP AS NEEDED
 CONST. INLET HOOKUP AND
 PAVEMENT UNDERDRAIN.
 PROVIDE SEDIMENT BARRIER.

PVI
 ELEV.=1336.36
 NO V.C.

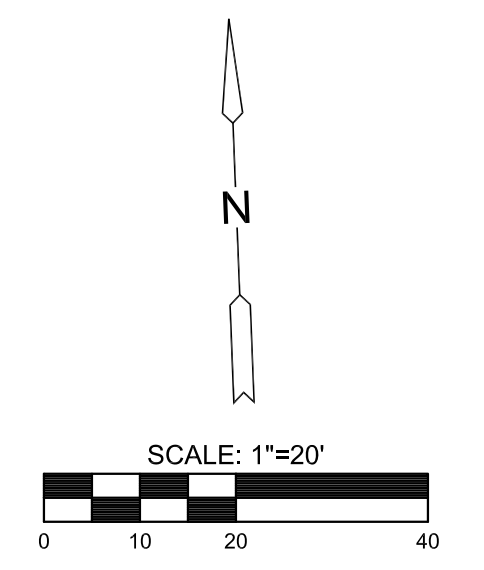
PVI
 ELEV.=1336.36
 NO V.C.

LEGEND
 + STREET SIGN & SIGN LOCATION
 (SEE SIGN ASSEMBLY TABLE
 FOR TYPE & STATION OF SIGN)

10' TRANSITION FROM
 FULL TO ROLL CURB

NOTE:
 TOP OF CURB ELEVATIONS SHOWN
 ARE FOR FULL CURB. CONSTRUCT
 CURB AND GUTTER AS NOTED.

GREGORY J. ALLISON
 LICENSED PROFESSIONAL ENGINEER
 KANSAS
 11159
 01/27/16



©2016
 MKEC Engineering
 All Rights Reserved
 www.mkec.com
 These drawings and their contents,
 including, but not limited to, all concepts,
 designs, & ideas are the exclusive
 property of MKEC Engineering (MKEC),
 and may not be used or reproduced in any
 way without the express consent of MKEC.

ESTANCIA CT.
 CONT.

PROJECT NO.	472-85243
DATE	JAN. 2015
SCALE	1"=20'
DESIGNED	DFL
DRAWN	BKS
CHECKED	GJA

NO.	REVISION	DATE