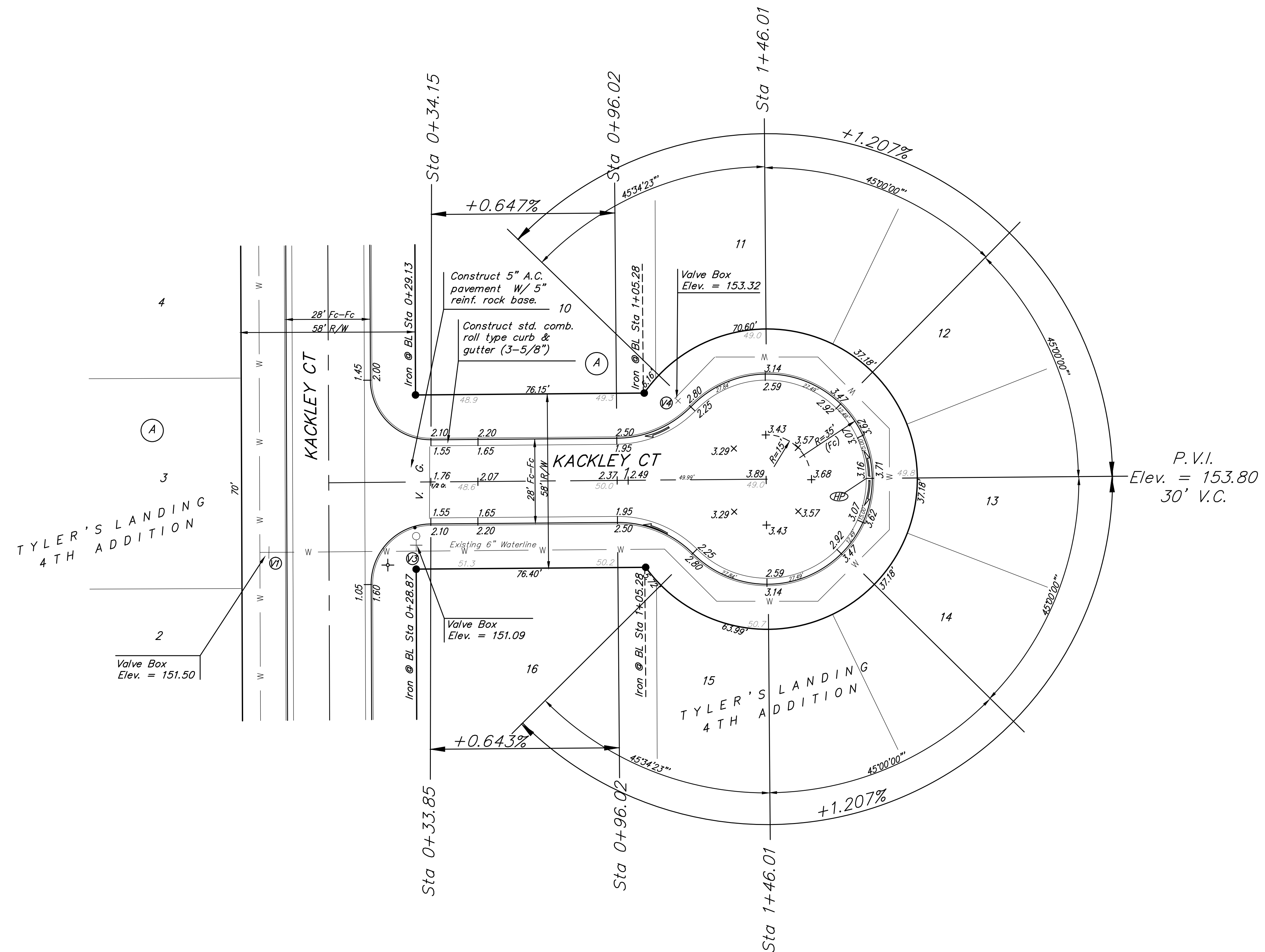


Benchmarks:
 BM #1: "□" Cut in North Curb of Kackley Ct., Adjacent to common lot line between Lot 19 and Lot 20, Block A, Tyler's Landing 4th Addition.
 Elev. = 152.23 City Datum

BM #2: City of Wichita Disc Set in Top of West Curb of Pepper Ridge, Adjacent to North Line of Lot 4, Block C, Tyler's Landing 3rd Addition.
 Elev. = 152.45 City Datum

Scale: 1" = 20'
 • = Iron



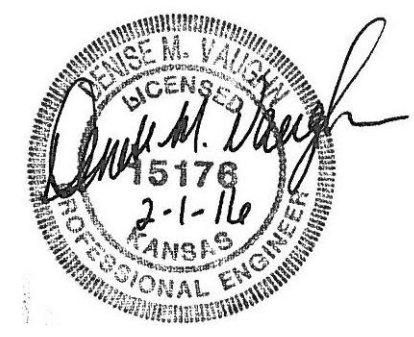
P.V.I.
 Elev. = 153.80
 30' V.C.

VALVE LOCATION TABLE

VALVE NUMBER	BASELINE STATION	OFFSET DISTANCE	OFFSET DIRECTION
3	0+28.56	21.79'	Rt.
4	1+15.38	26.55'	Lt.

Paving contractor will be responsible to operate all water valves on the project, in the presence of the inspector, to ensure accessibility to the valves, and that all valves are left in the "ON" position when the project is completed.

NOTE: ROLL TYPE CURB & GUTTER TO BE CONSTRUCTED ON THE PAVEMENT SHOWN ON THIS SHEET. TOP OF CURB ELEVATIONS ARE GIVEN FOR FULL HEIGHT CURB.



B Baughman	Tyler's Landing 4th Addition - Ph. 2	
	Kackley Ct STA 0+00 TO STA 1+46.01	
Baughman Company, P.A. 315 Elm St. Wichita, KS 67211 P 316-262-7271 F 316-262-0149 ENGINEERING SURVEYING PLANNING LANDSCAPE ARCHITECTURE		
PROJECT NUMBER 472-85181	DESIGN AMH	DRAWN AMH
REVISIONS:	APPROVED	DATE
	SCALE Noted	SHEET
		7 OF 17
E:\eng\Tyler's Landing 4th Addition\STR\str1.dwg		08-05-E125