

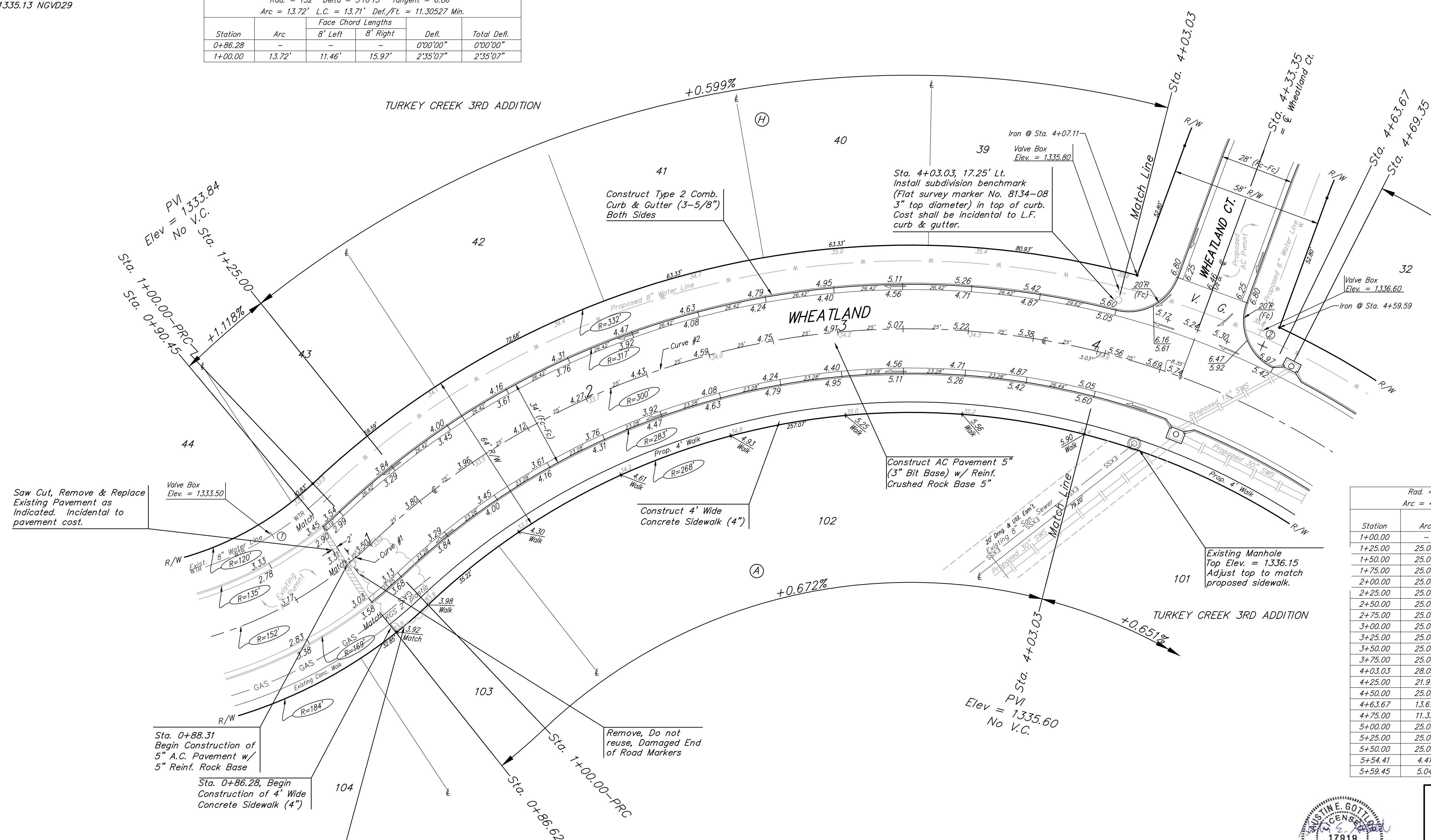
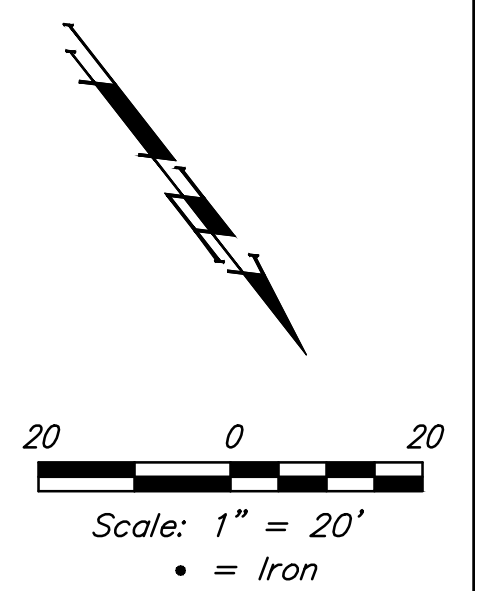
BENCHMARKS:

BM #1: "□" Cut in top of curb, north of NW corner of Lot 44, Block H, Turkey Creek 3rd Addition.
Elev. = 1333.17 NGVD29

BM #2: "□" Cut in top of curb, south end of south curb return SW corner of Grant & Wheatland.
Elev. = 1335.13 NGVD29

Curve #1
Curve Data Based on Centerline
Rad. = 152' Delta = 51°13' Tangent = 6.86'
Arc = 13.72' L.C. = 13.71' Def./Ft. = 11.30527 Min.

Station	Arc	Face Chord Lengths		Defl.	Total Defl.
		8' Left	8' Right		
0+86.28	-	-	-	0'00"00"	0'00"00"
1+00.00	13.72'	11.46'	15.97'	2'35"07"	2'35"07"



Curve #2
Curve Data Based on Centerline
Rad. = 300' Delta = 87°44'58" Tangent = 288.44'
Arc = 459.45' L.C. = 415.85' Def./Ft. = 5.72964 Min.

Station	Arc	Face Chord Lengths		Defl.	Total Defl.
		8' Left	8' Right		
1+00.00	-	-	-	0'00"00"	0'00"00"
1+25.00	25.00'	27.08'	22.91'	2'23"14"	2'23"14"
1+50.00	25.00'	27.08'	22.91'	2'23"15"	4'46"29"
1+75.00	25.00'	27.08'	22.91'	2'23"14"	7'09"43"
2+00.00	25.00'	27.08'	22.91'	2'23"15"	9'32"58"
2+25.00	25.00'	27.08'	22.91'	2'23"14"	11'56"12"
2+50.00	25.00'	27.08'	22.91'	2'23"15"	14'19"27"
2+75.00	25.00'	27.08'	22.91'	2'23"14"	16'42'41"
3+00.00	25.00'	27.08'	22.91'	2'23"15"	19'05'56"
3+25.00	25.00'	27.08'	22.91'	2'23"14"	21'29'10"
3+50.00	25.00'	27.08'	22.91'	2'23"15"	23'52'25"
3+75.00	25.00'	27.08'	22.91'	2'23"14"	26'15'39"
4+03.03	28.03'	30.36'	25.69'	2'40'36"	28'56'15"
4+25.00	21.97'	23.80'	20.13'	2'05'53"	31'02'08"
4+50.00	25.00'	27.08'	22.91'	2'23"14"	33'25'22"
4+63.67	13.67'	14.81'	12.53'	1'18"20"	34'43'42"
4+75.00	11.33'	12.27'	10.39'	1'04'55"	35'48'37"
5+00.00	25.00'	27.08'	22.91'	2'23"14"	38'11'51"
5+25.00	25.00'	27.08'	22.91'	2'23"15"	40'35'06"
5+50.00	25.00'	27.08'	22.91'	2'23"14"	42'58'20"
5+54.41	4.41'	4.78'	4.04'	0'28'16"	43'23'36"
5+59.45	5.04'	5.46'	4.62'	0'28'53"	43'52'29"

Roll type curb & gutter to be constructed on the pavement on this sheet.
Top of curb elevation are given for full height curb.



Baughman | Turkey Creek 3rd Addition - Phase 3A
WHEATLAND
Sta. 0+88.31 to Sta. 4+03.03

Baughman Company, P.A. | 315 Ellis St., Wichita, KS 67211 | P 316-262-7771 | F 316-262-4149
ENGINEERING | SURVEYING | PLANNING | LANDSCAPE ARCHITECTURE

PROJECT NUMBER 472-84488	DESIGN AEG	DRAWN JAK
REVISIONS:	APPROVED	DATE 1/25/16
	SCALE Noted	SHEET 8 OF 38

E:\Projects\Turkey Creek 3rd Engineering\Phase 3A\Str.1505E249\Str Plans.jug