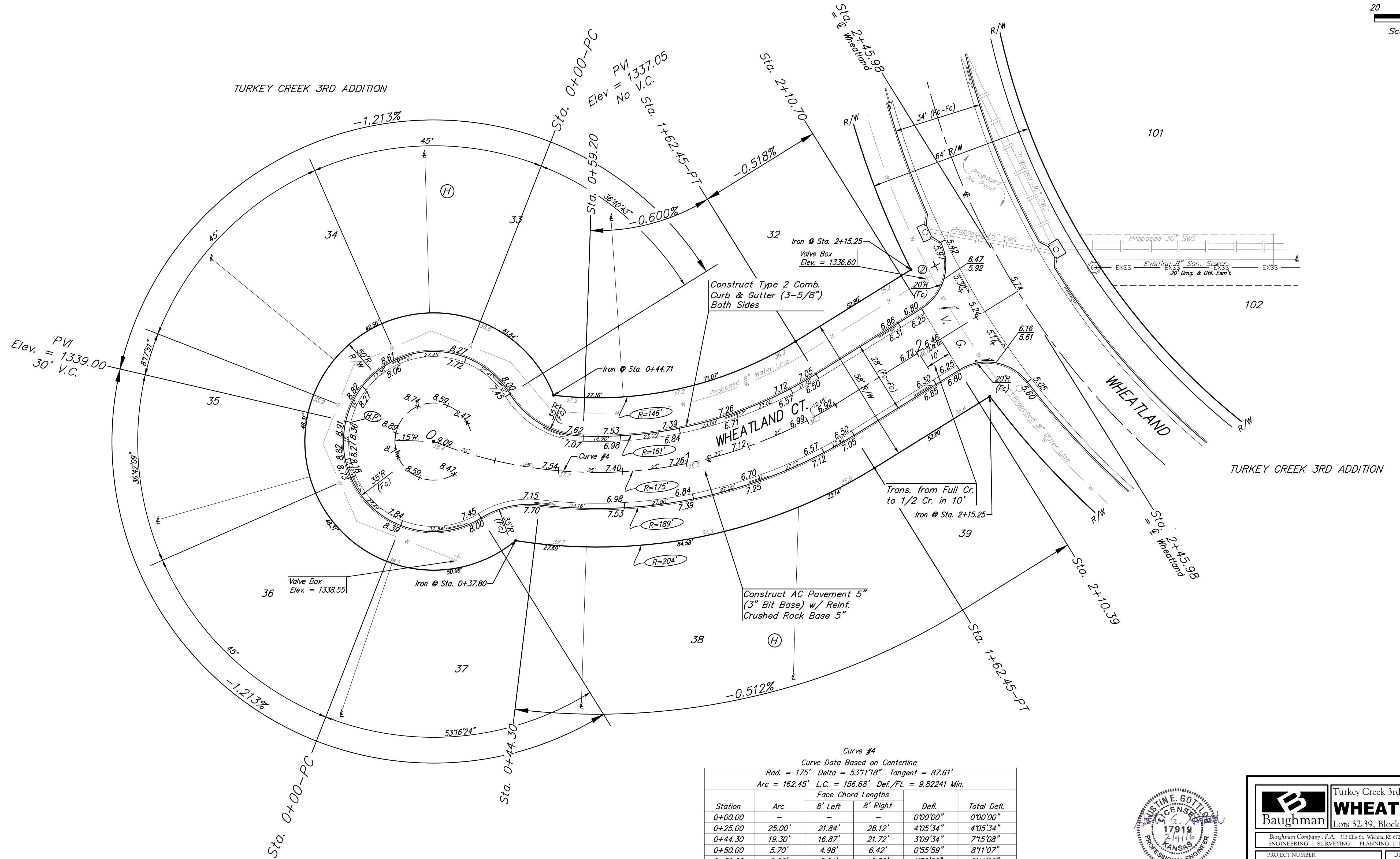
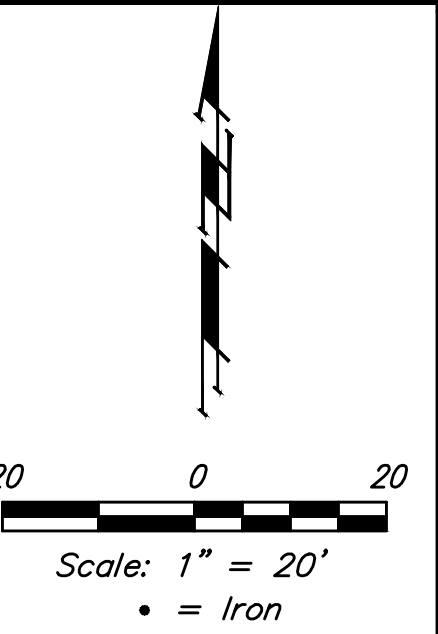


**BENCHMARKS:**

BM #1: "□" Cut in top of curb, north of NW corner of Lot 44, Block H, Turkey Creek 3rd Addition.  
Elev. = 1333.17 NGVD29

BM #2: "□" Cut in top of curb, south end of south curb return SW corner of Grant & Wheatland.  
Elev. = 1335.13 NGVD29



Curve #4  
Curve Data Based on Centerline  
Rad. = 175' Delta = 53°11'18" Tangent = 87.61'  
Arc = 162.45' L.C. = 156.68' Def./ft. = 9.82241 Min.

Station	Arc	Face Chord Lengths		Defl.	Total Defl.
		8' Left	8' Right		
0+00.00	-	-	-	0'00"00"	0'00"00"
0+25.00	25.00'	21.84'	28.12'	4'05"34"	4'05"34"
0+44.30	19.30'	16.87'	21.72'	3'09"34"	7'15"08"
0+50.00	5.70'	4.98'	6.42'	0'55"59"	8'11"07"
0+59.20	9.20'	8.04'	10.36'	1'30"22"	9'41"29"
0+75.00	15.80'	13.81'	17.78'	2'35"12"	12'16"41"
1+00.00	25.00'	21.84'	28.12'	4'05"33"	16'22"14"
1+25.00	25.00'	21.84'	28.12'	4'05"34"	20'27"48"
1+50.00	25.00'	21.84'	28.12'	4'05"34"	24'33"22"
1+62.45	12.45'	10.88'	14.01'	2'02"17"	26'35"39"

Roll type curb & gutter to be constructed on the pavement on this sheet.  
Top of curb elevation are given for full height curb.



**Baughman** Turkey Creek 3rd Addition - Phase 3A  
**WHEATLAND CT**  
Lots 32-39, Block D

Baughman Company, P.A. 315 Ellis St. Wichita, KS 67211 P 316-262-7271 F 316-262-0149  
ENGINEERING | SURVEYING | PLANNING | LANDSCAPE ARCHITECTURE

PROJECT NUMBER 472-84488	DESIGN AEG	DRAWN JAK
REVISIONS:	APPROVED	DATE 1/25/16
	SCALE Noted	SHEET 10 OF 38

E:\Projects\Turkey Creek 3rd\Engineering\Phase 3A\Str\_1505E149\Str Plans.dwg