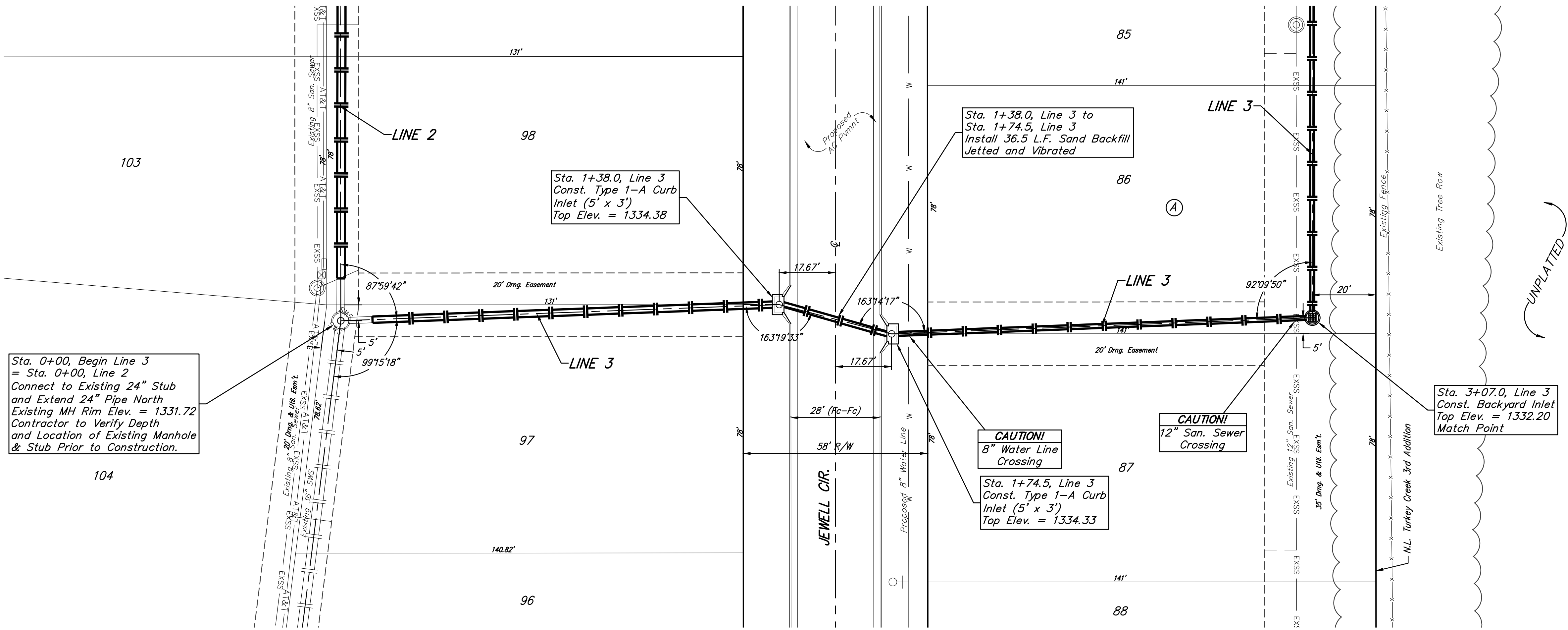
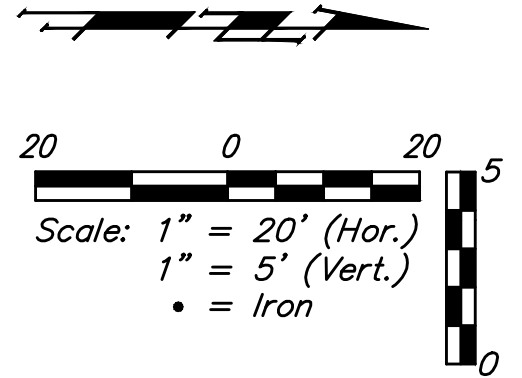


**BENCHMARKS:**  
 BM #1: "□" Top of Curb NE of the most easterly corner of Lot 28, Block E, Falcon Falls 2nd Addition  
 Elev. = 1361.23 (NGVD29)  
 BM #2: "□" Top of Curb North of the NE corner of Lot 2, Block D, Falcon Falls 3rd Addition  
 Elev. = 1351.76 (NGVD29)

TURKEY CREEK 3RD ADDITION



Sta. 0+00, Begin Line 3 = Sta. 0+00, Line 2  
 Connect to Existing 24" Stub and Extend 24" Pipe North Existing MH Rim Elev. = 1331.72 Contractor to Verify Depth and Location of Existing Manhole & Stub Prior to Construction.

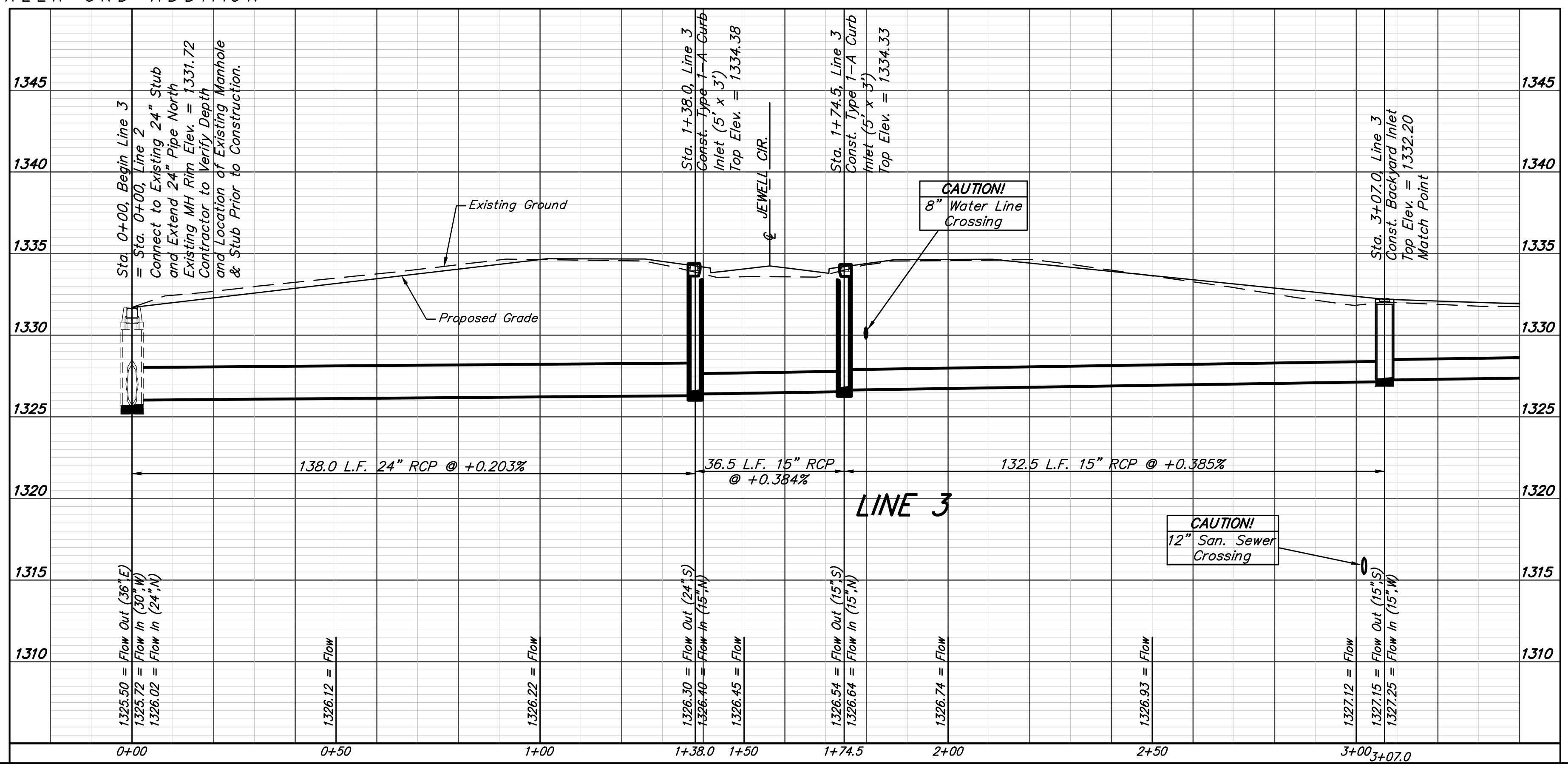
Sta. 1+38.0, Line 3 to Sta. 1+74.5, Line 3  
 Install 36.5 L.F. Sand Backfill Jetted and Vibrated

**CAUTION!**  
 8" Water Line Crossing  
 Sta. 1+74.5, Line 3 Const. Type 1-A Curb Inlet (5' x 3') Top Elev. = 1334.33

**CAUTION!**  
 12" San. Sewer Crossing

Sta. 3+07.0, Line 3 Const. Backyard Inlet Top Elev. = 1332.20 Match Point

TURKEY CREEK 3RD ADDITION



		Turkey Creek 3rd Addition - Phase 3A		
		<b>LINE 3</b> Storm Water Sewer Improvements		
Baughman Company, P.A. 315 Ellis St. Wichita, KS 67211 P 316-262-7271 F 316-262-0149 ENGINEERING   SURVEYING   PLANNING   LANDSCAPE ARCHITECTURE		PROJECT NUMBER 472-84488	DESIGN AEG	DRAWN JAK
REVISIONS:		APPROVED	DATE 1/26/16	SCALE Noted
				SHEET <b>17 OF 38</b>