

TURKEY CREEK 3RD ADDITION WICHITA, SEDGWICK COUNTY, KANSAS

BOARD OF COUNTY COMMISSIONERS
OF SEDGWICK COUNTY, KANSAS
(DOC.#/FLM-PG-28758023)

BOARD OF COUNTY COMMISSIONERS
OF SEDGWICK COUNTY, KANSAS
(DOC.#/FLM-PG-28758023)

MINIMUM BUILDING PAD ELEVATIONS FOR
LOWEST OPENING TO THE STRUCTURES

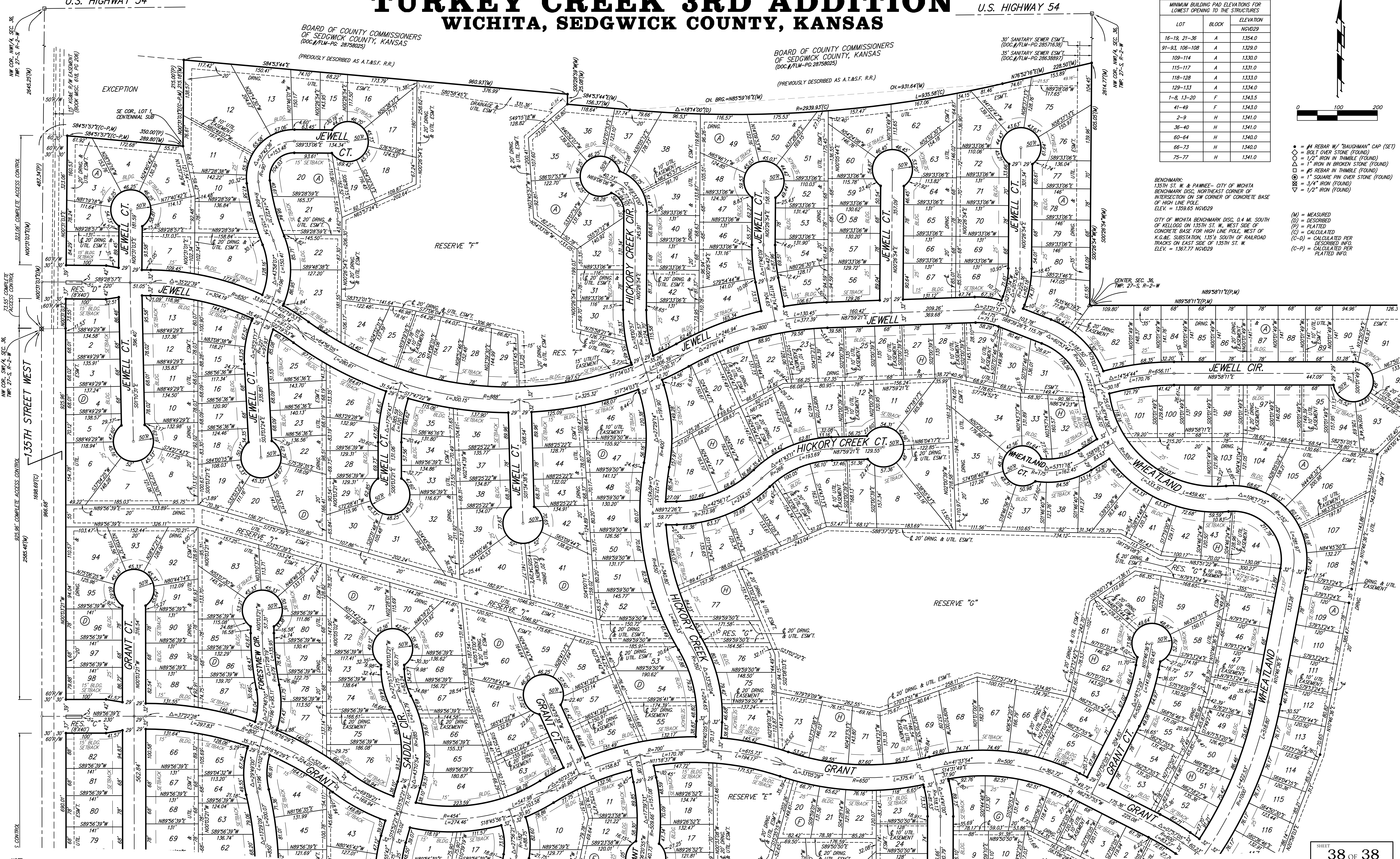
LOT	BLOCK	ELEVATION
16-19, 21-36	A	1354.0
91-93, 106-108	A	1329.0
109-114	A	1330.0
115-117	A	1331.0
118-128	A	1333.0
129-133	A	1334.0
1-8, 13-20	F	1343.5
41-49	F	1343.0
2-9	H	1341.0
36-40	H	1341.0
60-64	H	1340.0
66-73	H	1340.0
75-77	H	1341.0



- = #4 REBAR W/ "BAUGHMAN" CAP (SET)
- = BOLT OVER STONE (FOUND)
- ◇ = 1" IRON IN THIMBLE (FOUND)
- △ = 1" IRON IN BROKEN STONE (FOUND)
- = #5 REBAR IN THIMBLE (FOUND)
- ◇ = 1" SQUARE PIN OVER STONE (FOUND)
- △ = 3/4" IRON (FOUND)
- ◇ = 1/2" IRON (FOUND)

BENCHMARK:
135TH ST. W. & PAINEE - CITY OF WICHITA
BENCHMARK DISC. NORTHEAST CORNER OF
INTERSECTION ON SW CORNER OF CONCRETE
BASE OF HIGH LINE POLE, WEST OF
K.G.A.E. SUBSTATION, 135¹/₂ SOUTH OF RAILROAD
TRACKS ON EAST SIDE OF 135TH ST. W.
ELEV. = 1359.65 NGVD29

- (M) = MEASURED
- (D) = DESCRIBED
- (P) = PLATTED
- (C) = CALCULATED
- (C-D) = CALCULATED PER DESCRIBED INFO.
- (C-P) = CALCULATED PER PLATTED INFO.



NOTE:
A master grading plan for drainage has been developed for this subdivision
and is on file with the City of Wichita, Kansas. All drainage easements,
right-of-ways, or reserves shall remain as established grades or as
modified with the approval of the City Engineer of the City of Wichita,
Kansas. No obstructions which impede the flow of this drainage system
shall be allowed.