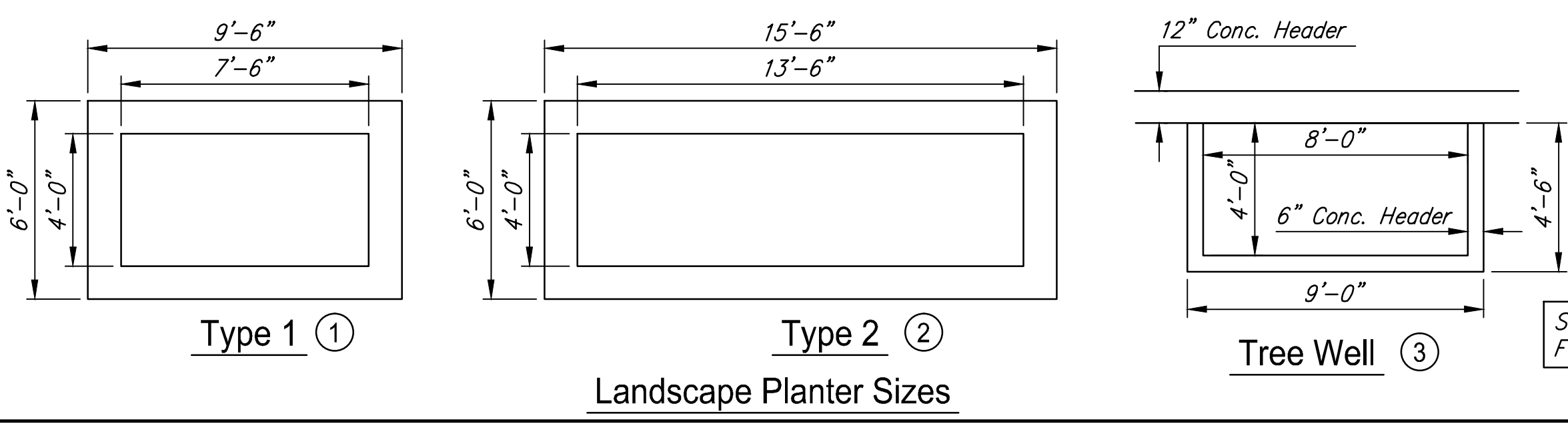
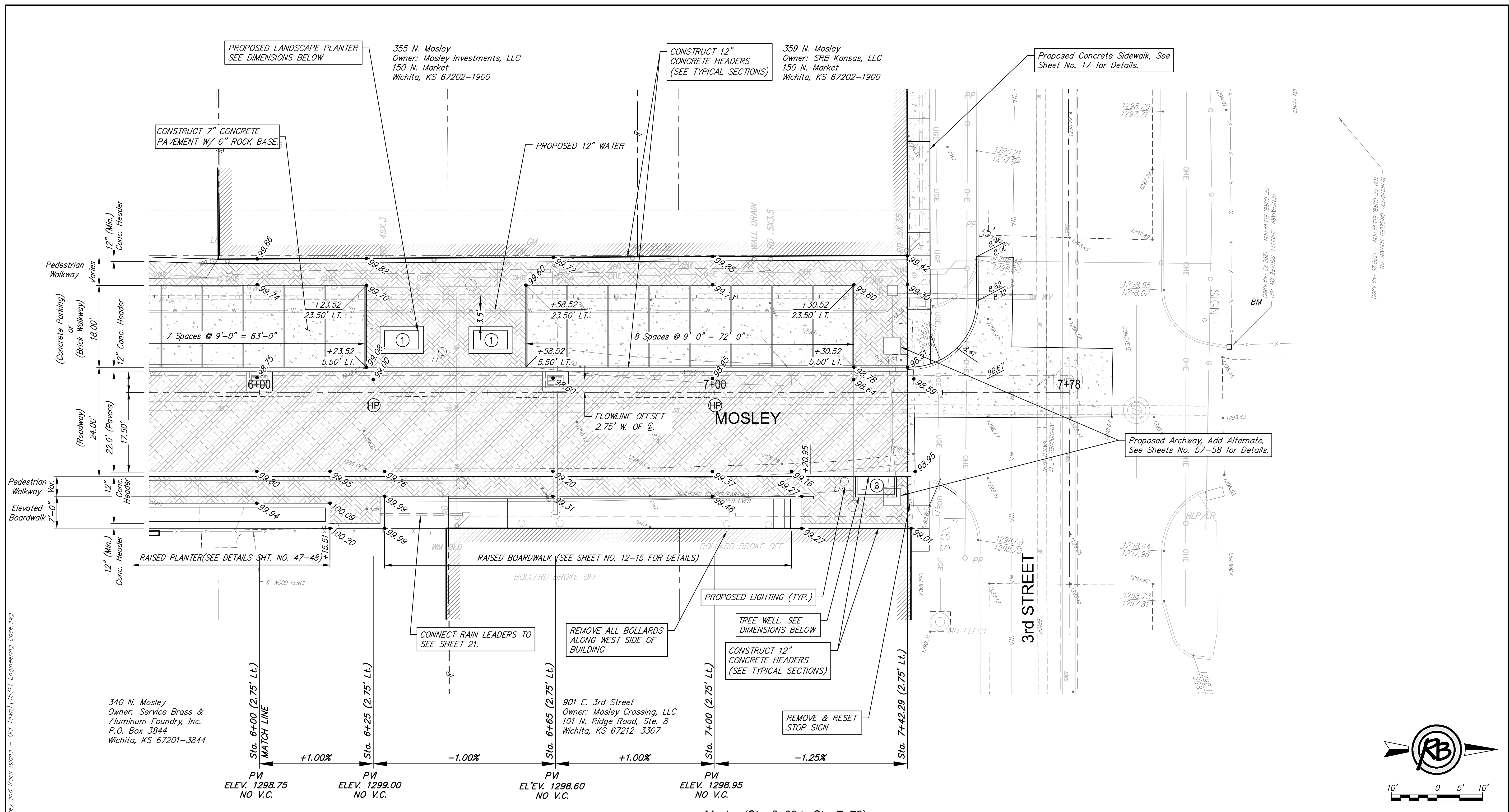


F:\Projects\Projects 4500-4599\45317 (Mosley and Rock Island - Old Town)\45317 Engineering Base.dwg



Mosley (Sta. 6+00 to Sta. 7+78)

- Area of Street Pavers
- Area of Driveway Pavers
- Area of Pedestrian Walkway Pavers

<b>MOSLEY &amp; ROCK ISLAND Mosley-Paving 3</b>		DATE Dec. 2, 2015
<b>RUGGLES &amp; BOHM</b>		DESIGN KWL/TR
ENGINEERING   SURVEYING   LANDSCAPE ARCHITECTURE   GOVERNMENT 924 NORTH MAIN WICHITA, KANSAS 67203 P (316) 264-8008 F (316) 264-4621 WWW.RUGGLESANDBOHM.COM		DRAWN DS
PROJECT NUMBER 472-85915		REVIEW 9-25-2015
DRAWING FILE 45317 Engineering Base [Mosley-Paving 3]		SHEET 11
RUGGLES & BOHM 15373 12-2-15 KANSAS PROFESSIONAL ENGINEER		OF 59