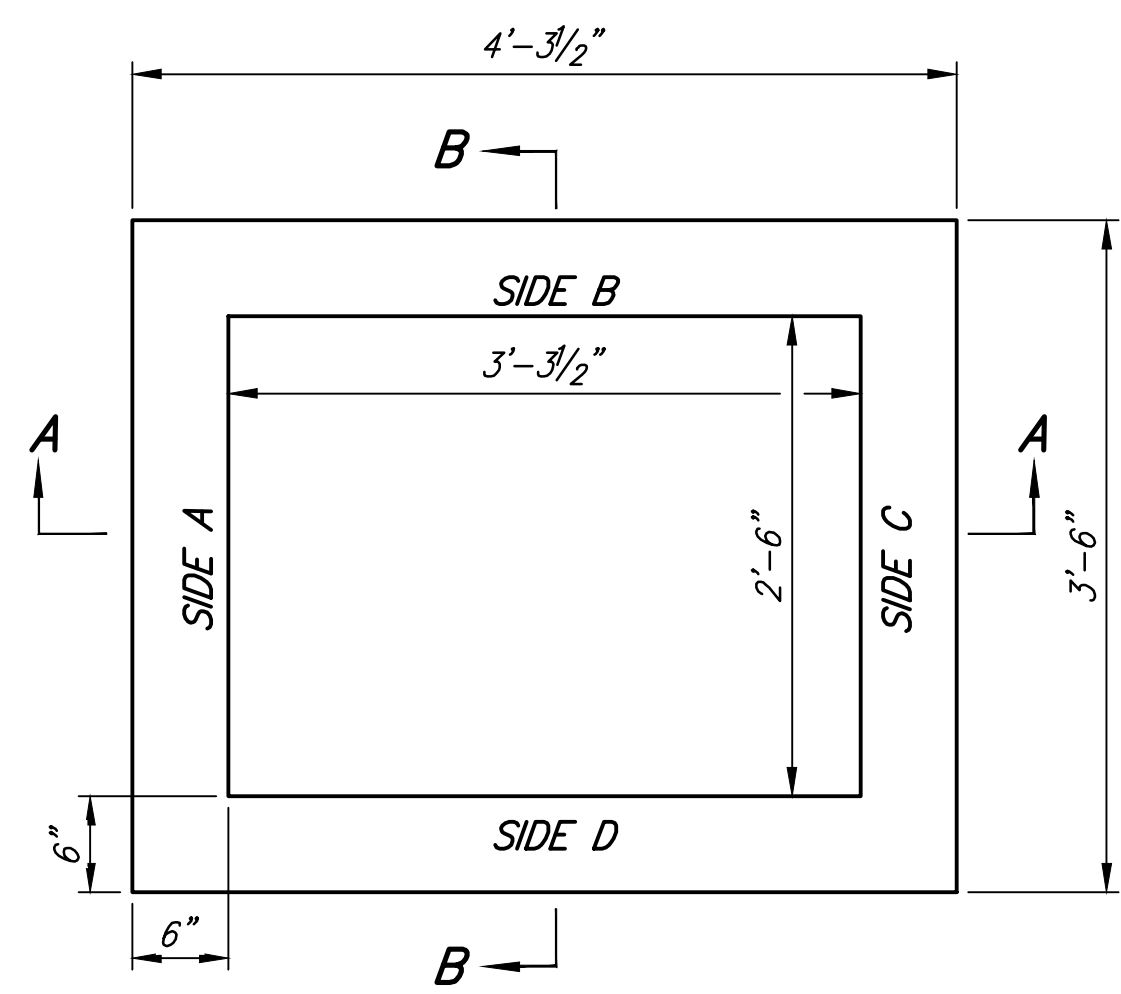
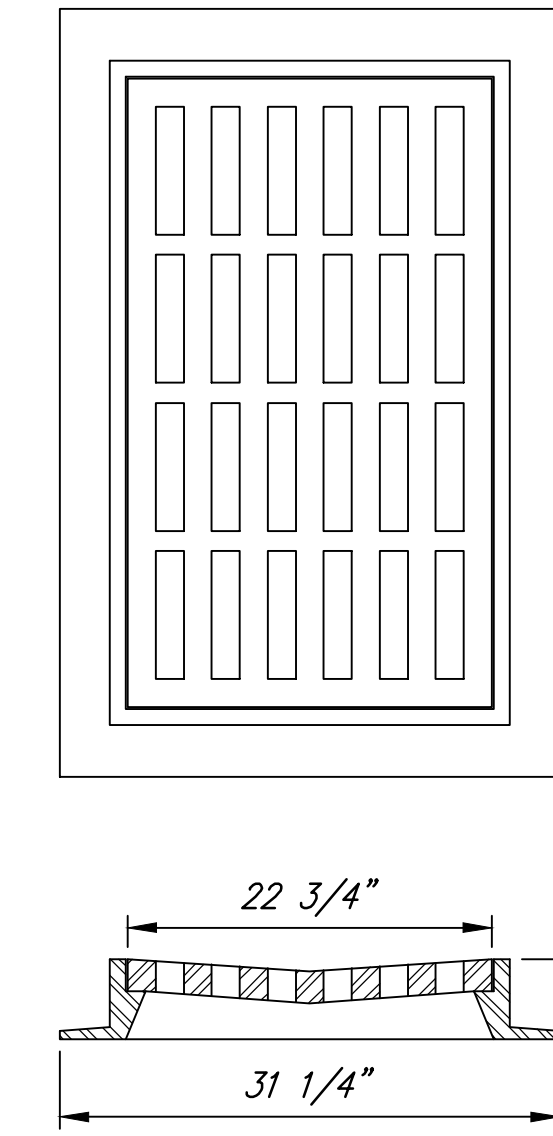
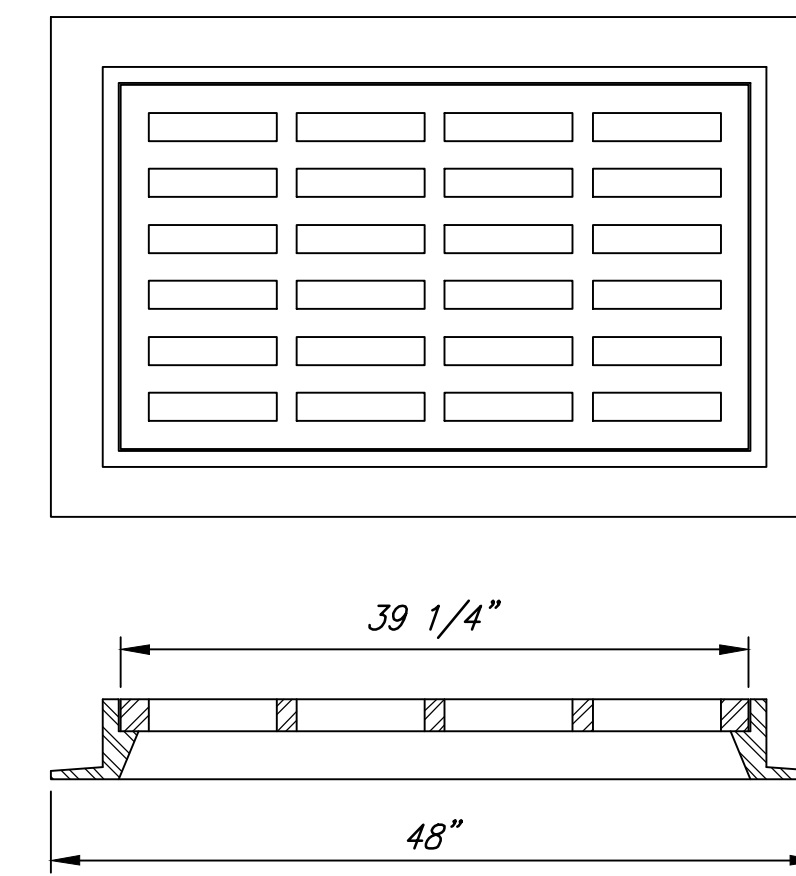


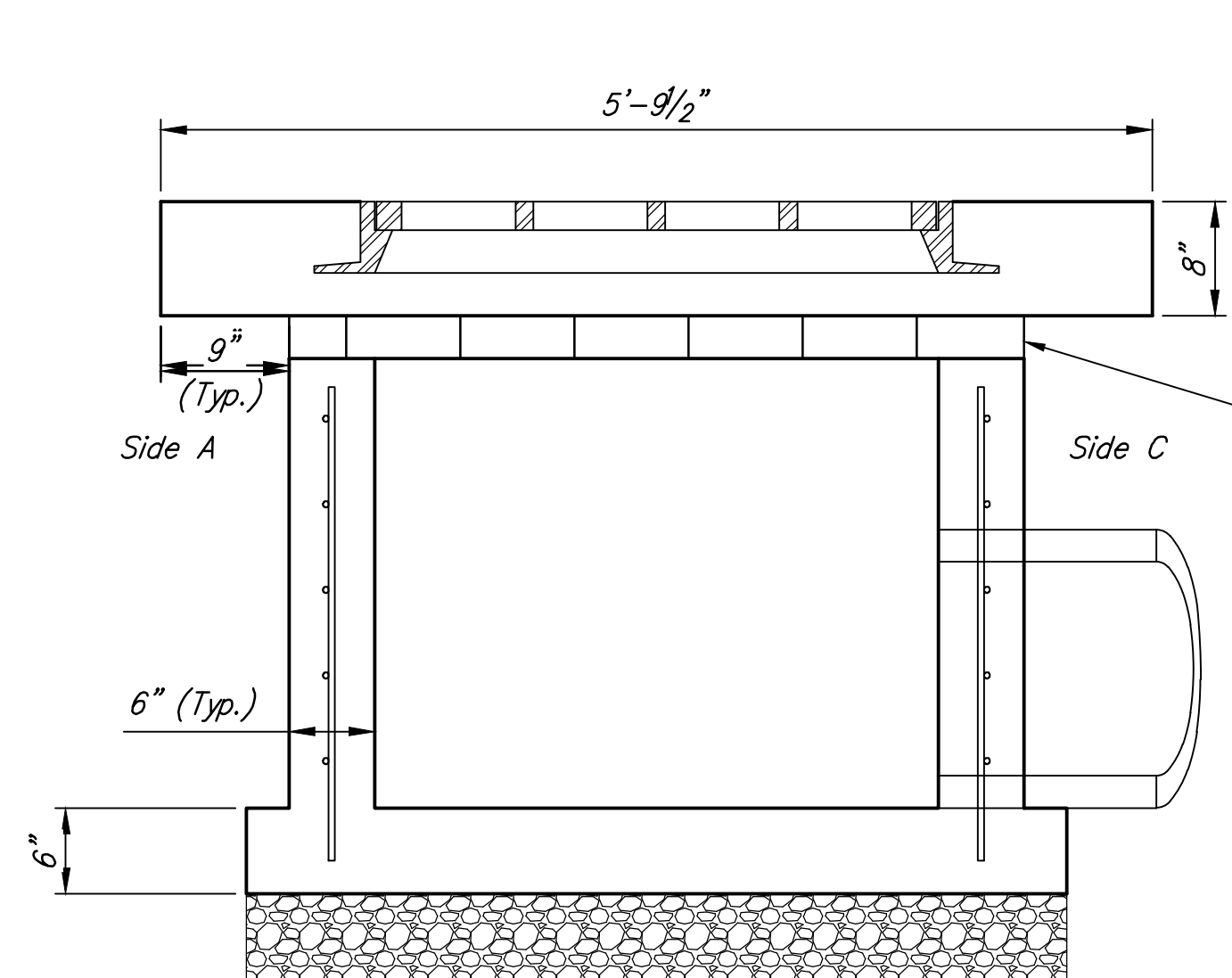
TOP VIEW



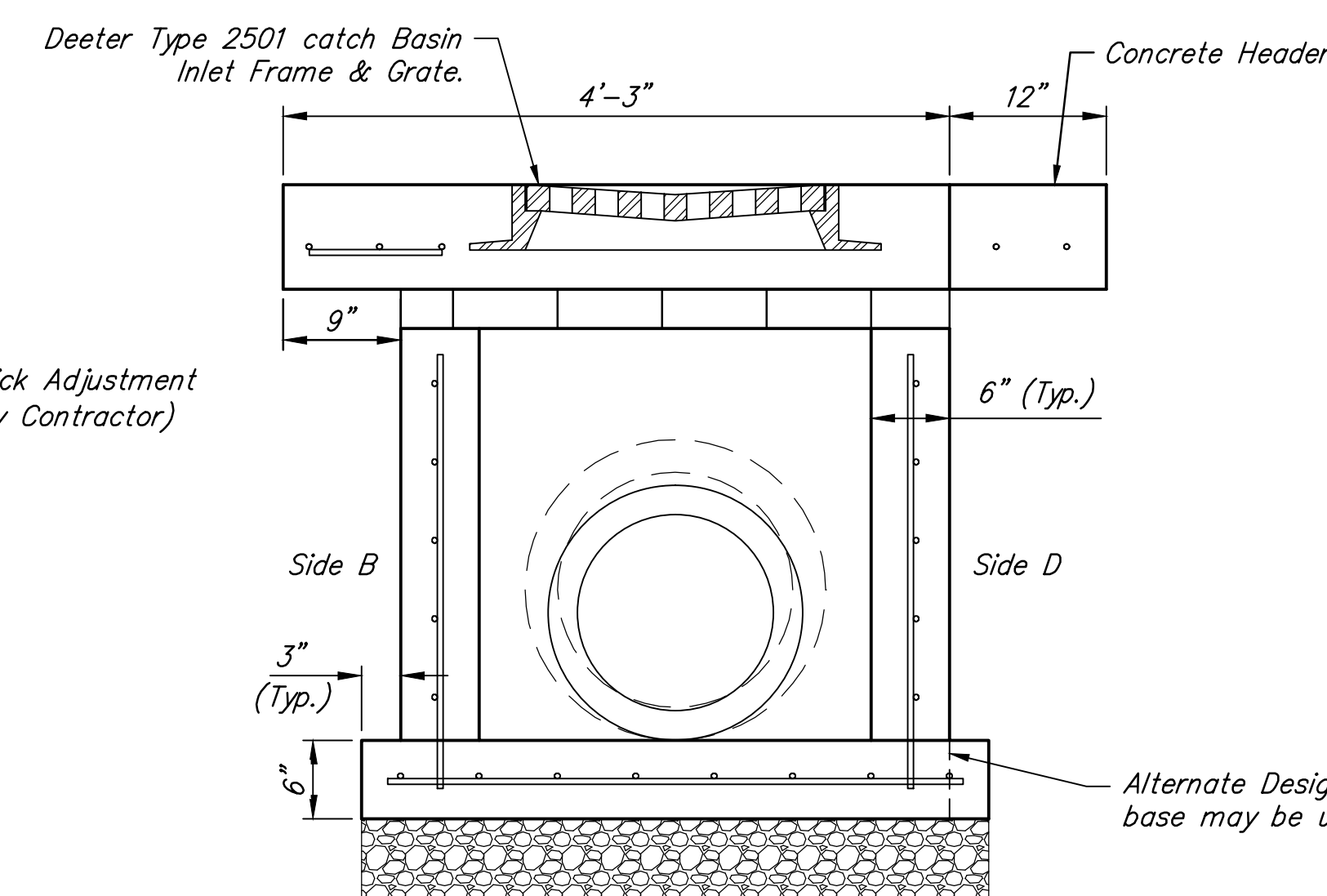
TOP VIEW



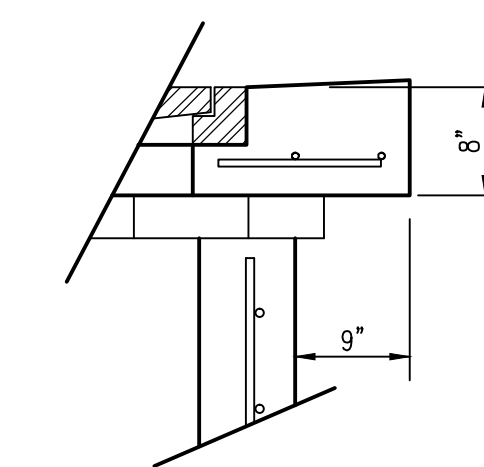
DEETER 2501 CATCH BASIN INLET GRATE & FRAME



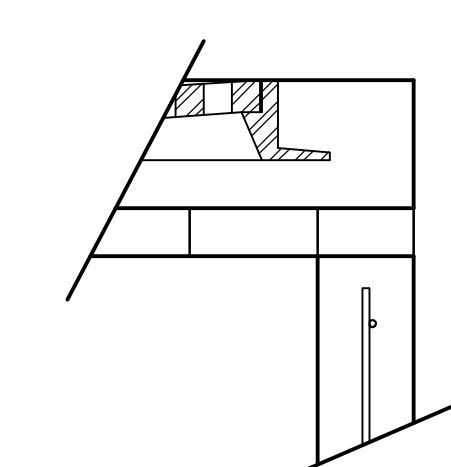
FRONT VIEW (SECTION A-A)



SIDE VIEW (SECTION B-B)



9" APRON
(Sides A,C,D)
(Brick Areas)




FLUSH STYLE
(Side B)
(Adjacent to
Concrete Header)

1. GRATE FRAME TO BE INSTALLED ON THIN MORTAR CUSHION TO INSURE FULL SUPPORT ALONG BRICK. CONCRETE USED FOR INLET CONSTRUCTION SHALL CONFORM TO CITY OF WICHITA SPECIFICATIONS FOR CONCRETE PAVEMENT MIX.
2. INLET INVERT SHALL BE SHAPED WITH 8 SACK SAND MIX CONCRETE TO CREATE FLOW CHANNELS AND TO INCREASE HYDRAULIC EFFICIENCY SUCH THAT THE INLET WILL BE SELF CLEANING BETWEEN ALL INLET AND/OR OUTLET PIPES.
3. THE ENDS OF ALL PIPES INSTALLED IN INLETS SHALL BE CUT OFF FLUSH WITH THE INSIDE FACE OF THE INLET WALL.
4. INLET FRAME AND GRATE TO BE DEETER #2501, OR APPROVED EQUAL.

F:\Projects\Projects 4500-4599\45317 (Mosley and Rock Island - Old Town)\Special Drop Inlet.dwg

(c) Copyright 2015, Ruggles & Bohm, P.A.

MOSLEY & ROCK ISLAND Special Drop Inlet		DATE Dec. 2, 2015
 RUGGLES & BOHM		DESIGN KWL/TR
<small>ENGINEERING SURVEYING LANDSCAPE ARCHITECTURE GOVERNMENT 924 NORTH MAIN WICHITA, KANSAS 67203 P (316) 264-8008 F (316) 264-4621 WWW.RBKANSAS.COM</small>		DRAWN DS
PROJECT NUMBER 472-85915	RB JOB NO. 4531T	REVIEW 9-25-2015
DRAWING FILE Special Drop Inlet [Special Drop Inlet]	DIWG. SCALE ...	SHEET 25
		OF 59