

NOTE:
CUT, CAP & ABANDON EXISTING WATER MAIN IN MOSLEY NORTH OF CROSS CONNECT AFTER NEW LINE IS ACCEPTED.

INSTALL PLUG IN EXISTING TEE AND REMOVE EXISTING CROSS CONNECT AND VALVE.

N 1687235.49 E 1651758.22
STA. 1+00.00, Water-1 =
STA. 1+30.06 MOSLEY, 8.51' LT.
CUT & REMOVE 4 LF OF 8" PIPE
INSTALL 1-8"x12" INCREASER
1-12" MJ BEND 45°

13.48 L.F. 12" PVC
N 1687244.90 E 1651748.56
STA. 1+13.48, Water-1 =
STA. 1+39.63 MOSLEY, 18.00' LT.
1-12" MJ BEND 45°

N 1687479.63 E 1651748.37
STA. 5+03.45, MOSLEY, 11.5' LT.
2" IRRIGATION METER.
REFERENCE IRRIGATION PLANS
SHT. NO. 49 FOR DETAILS

N 1687477.74 E 1651744.57
STA. 3+46.35, Water-1 =
STA. 1+00.00, Water-1A =
STA. 3+72.50 MOSLEY, 18.00' LT.
SEE SHEET NO. 33

CONTRACTOR TO REMOVE 3 BOLLARDS AROUND EXISTING FH

N 1687535.73 E 1651743.57
STA. 4+04.36, Water-1 =
STA. 4+30.50 MOSLEY, 18.00' LT.
1-FIRE HYDRANT ASS'Y. (E)
L = 4'
BURY LINE ELEV. 1298.63
VALVE BOX ELEV. 1298.80

232.87 L.F. 12" PVC

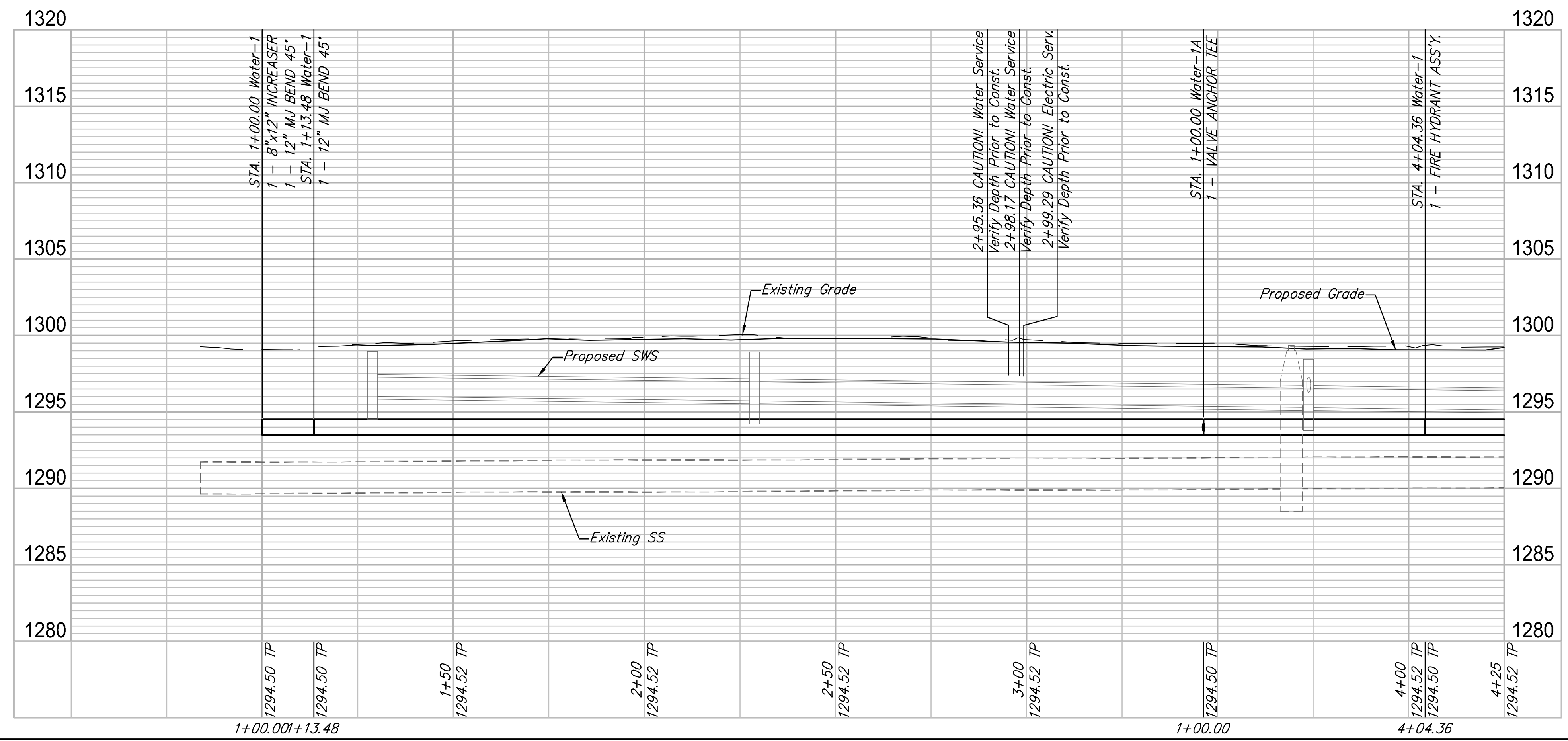
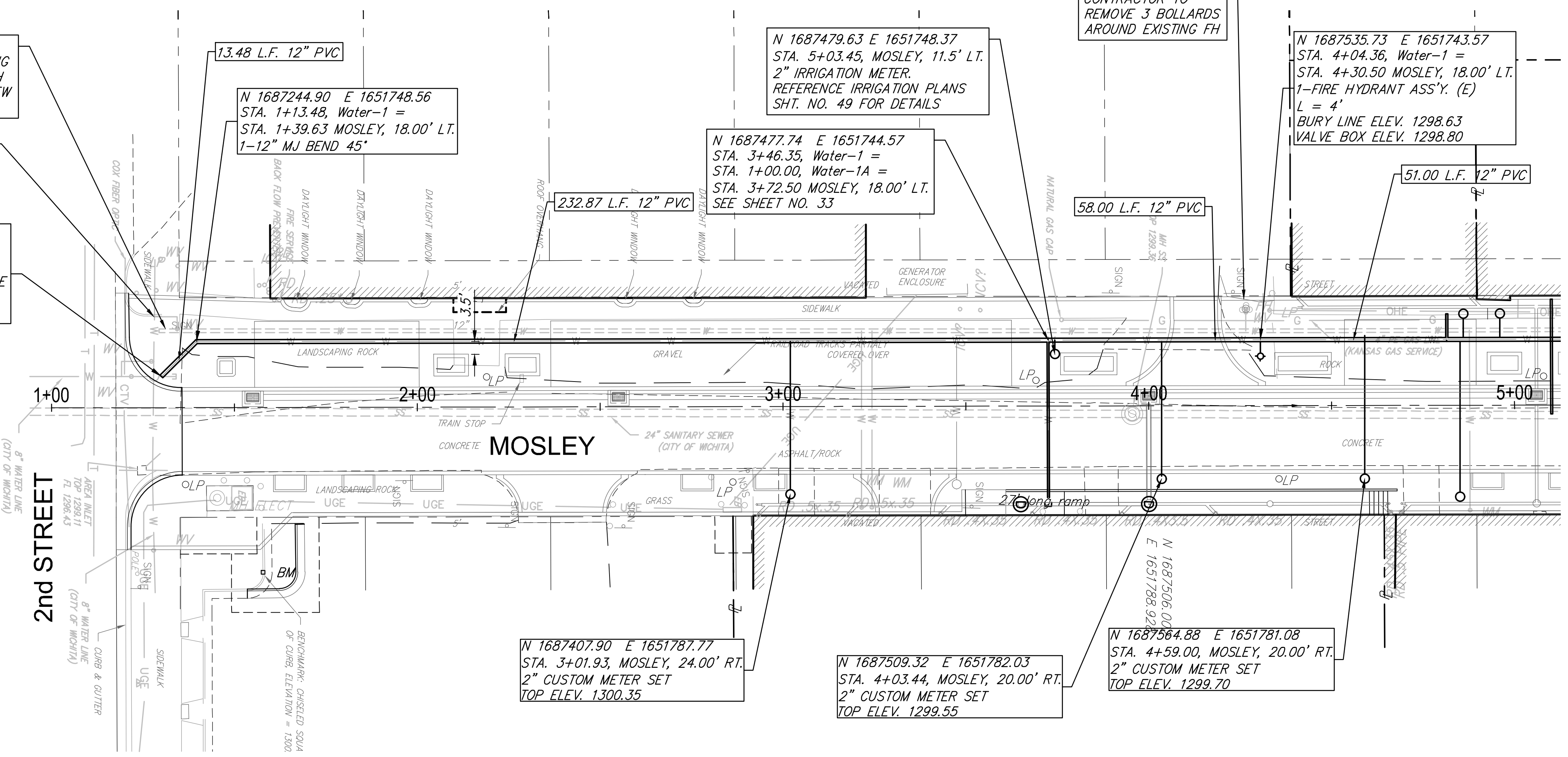
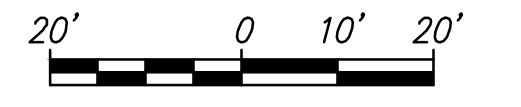
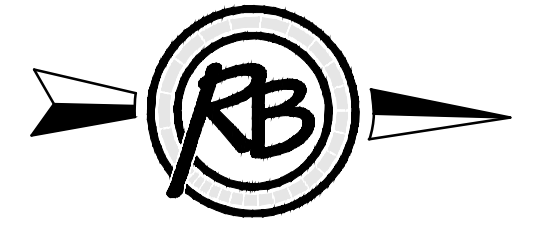
58.00 L.F. 12" PVC

51.00 L.F. 12" PVC

N 1687407.90 E 1651787.77
STA. 3+01.93, MOSLEY, 24.00' RT.
2" CUSTOM METER SET
TOP ELEV. 1300.35

N 1687509.32 E 1651782.03
STA. 4+03.44, MOSLEY, 20.00' RT.
2" CUSTOM METER SET
TOP ELEV. 1299.55

N 1687564.88 E 1651781.08
STA. 4+59.00, MOSLEY, 20.00' RT.
2" CUSTOM METER SET
TOP ELEV. 1299.70



**MOSLEY & ROCK ISLAND
Waterline-1 (1 of 2)**
Wichita, Kansas

REVISION: 9-25-2015
DATE: Dec. 2, 2015

DESIGN: KWL/TR
DRAWN: [Signature]

PROJECT NUMBER: 472-85915
DRAWING FILE: [Path]

453 T Engineering Base Waterline-1 (1 of 2)

KENNETH W. LEE
15373
12-2-15
PROFESSIONAL ENGINEER

RB JOB: 4531T
SHEET: 31 OF 59