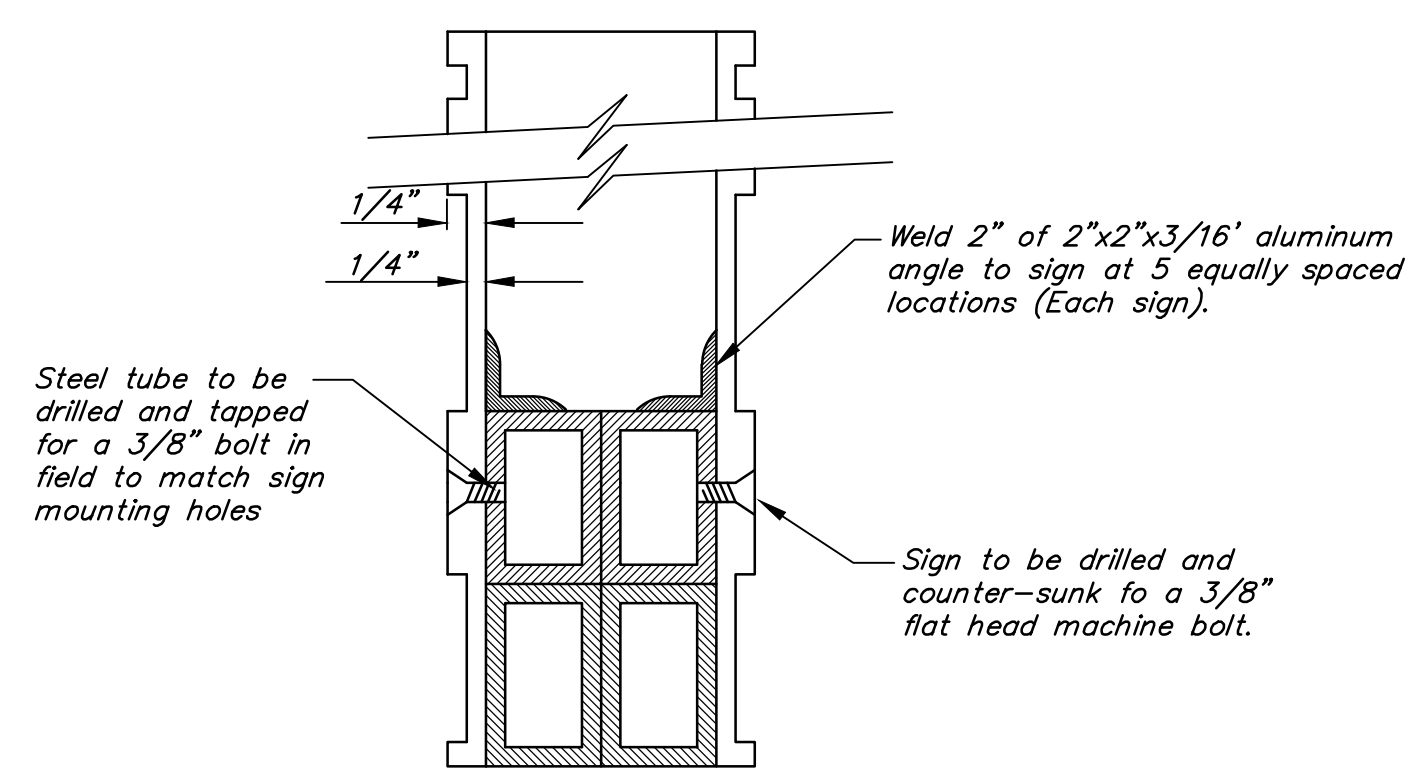
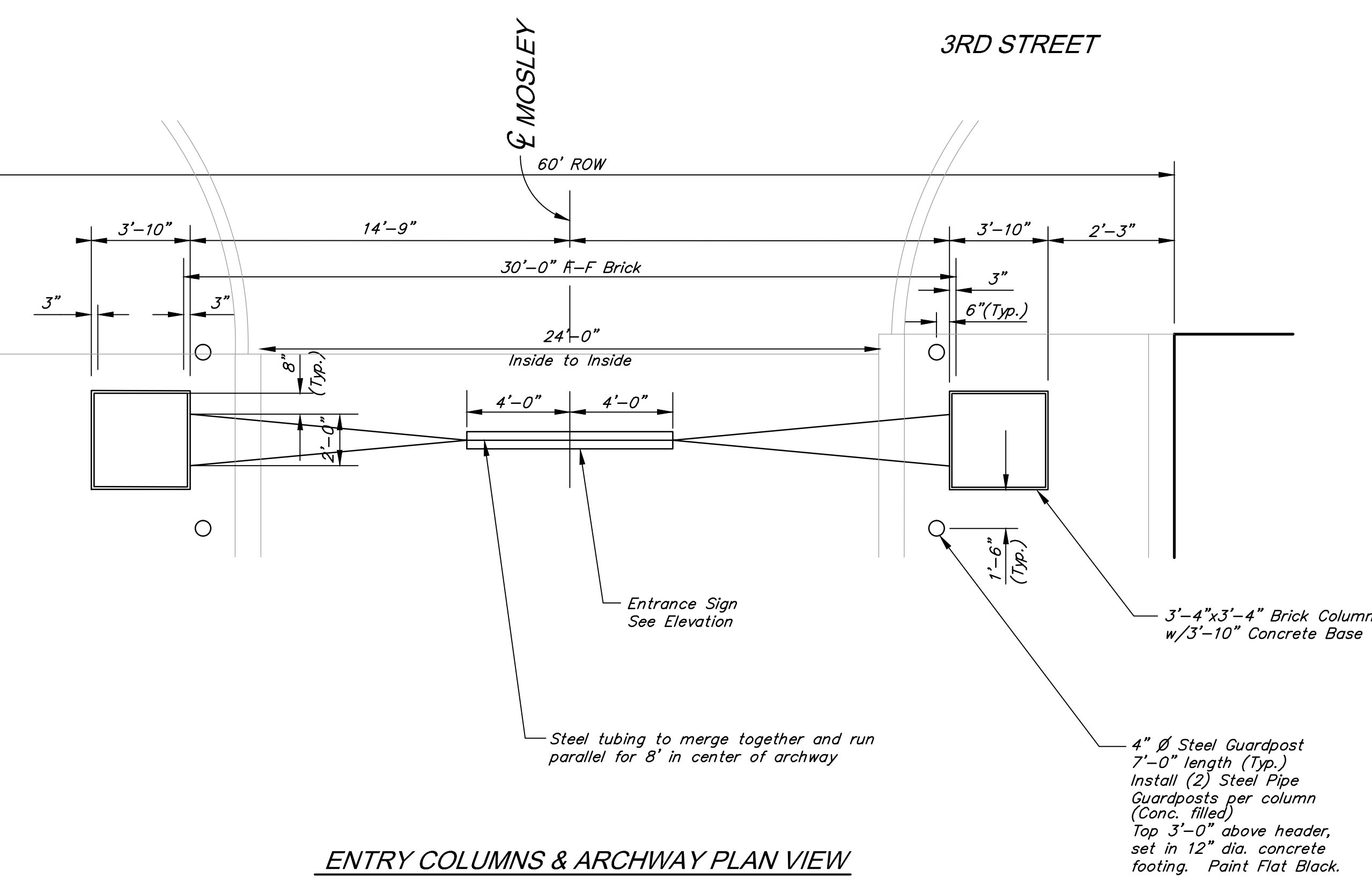
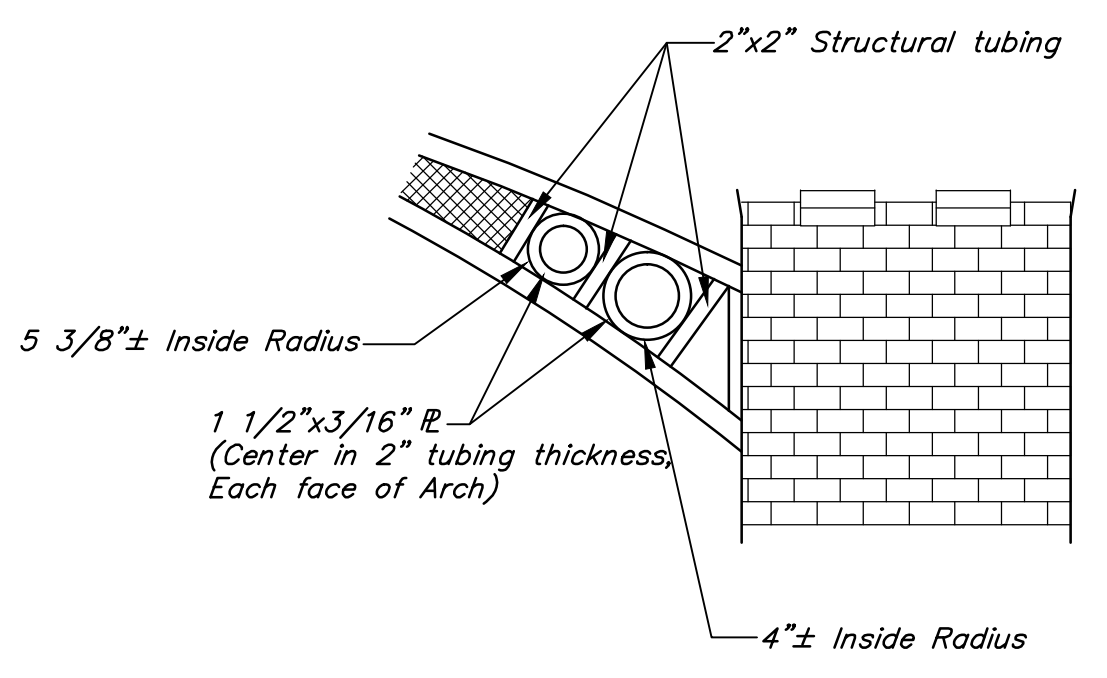


ENTRY COLUMNS & ARCHWAY PLAN VIEW

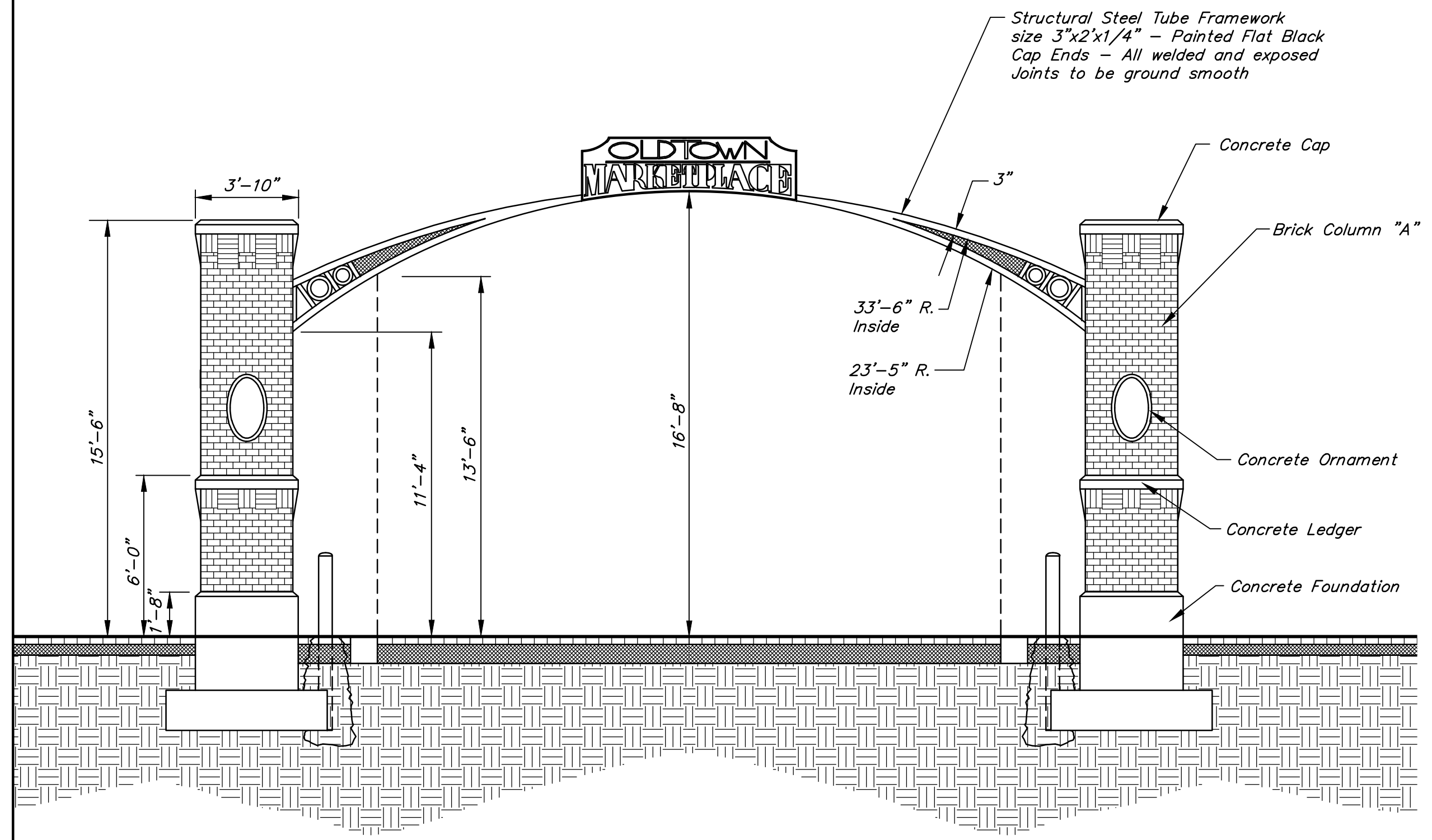


ARCHWAY DETAIL

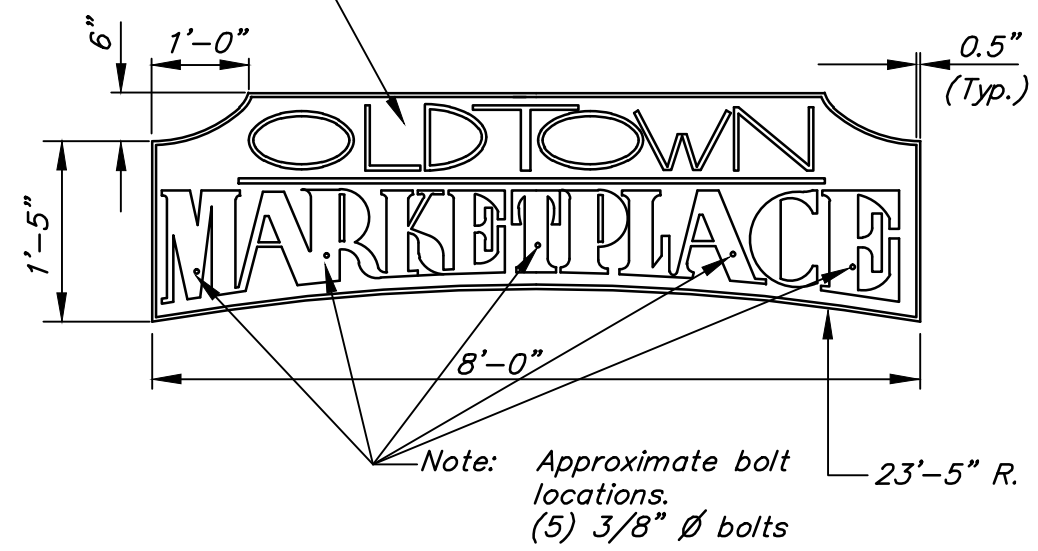


- BRICK COLUMN AND ARCHWAY NOTES**
- DESIGN LOADS: STEEL ARCH - 10 PSF ICE LOAD WITH A 300 LB. VERTICAL CONCENTRATED LIVE LOAD @ ANY LOCATION IN SPAN; BASIC WIND SPEED = 80 MPH, EXPOSURE B.
 - THE MAXIMUM NET ALLOWABLE TOTAL LOAD SOIL BEARING PRESSURE DOES NOT EXCEED 2000 PSF FOR COLUMN FOOTINGS. FOOTINGS SHALL BEAR INTO UN-DISTURBED NON-ORGANIC SOIL. IF ACTUAL SITE CONDITIONS DO NOT SATISFY THESE REQUIREMENTS, COORDINATE ADJUSTMENTS WITH THE PROJECT ENGINEER.
 - FOOTINGS MAY BE POURED TO NEAT LINE OF EXCAVATIONS, PROVIDED THAT VERTICAL LINES OF EXCAVATION CAN BE MAINTAINED DURING CONCRETE PLACEMENT.
 - ALL STRUCTURAL REGULAR WEIGHT CONCRETE SHALL ATTAIN A MINIMUM COMPRESSIVE STRENGTH OF 3500 PSI @ 28 DAYS. ALL CONCRETE SHALL BE IN CONFORMANCE WITH THE LATEST A.C.I. 301 STANDARDS PUBLICATION.
 - NO ALUMINUM CONDUIT SHALL BE EMBEDDED IN ANY CONCRETE.
 - ALL REINFORCING BARS #3 AND #4 SHALL MEET ASTM A615 GRADE 40; REINFORCING BARS #5 AND LARGER SHALL MEET ASTM A615 GRADE 60.
 - CONCRETE PROTECTION FOR REINFORCEMENT SHALL BE 2" CLEAR FOR FORMED SURFACES AND 3" CLEAR FOR FOOTINGS (TYP.) UNLESS OTHERWISE NOTED.
 - HOLLOW CONCRETE MASONRY UNITS SHALL MEET ASTM C90, GRADE N SPECIFICATIONS (f_m=1500 PSI); UNITS TO BE 2-HOLE MODULAR TYPE. MORTAR TO BE TYPE N. WHERE REINFORCED MASONRY IS SHOWN, USE LOW LIFT GROUTING PROCEDURES AND PROVIDE GROUT CONFORMING TO ASTM 476 WITH A MINIMUM COMPRESSIVE STRENGTH OF 2500 PSI AND A MAXIMUM AGGREGATE SIZE OF 3/8".
 - ALL STRUCTURAL STEEL SHALL MEET ASTM A36 (f_y=36 KSI MIN.) EXCEPT WHERE NOTED OTHERWISE. STRUCTURAL TUBING - ASTM A500 GRADE B (f_y=46 KSI), AND ANCHOR BOLTS - ASTM A307.
 - STRUCTURAL STEEL SHALL MEET THE LATEST A.I.S.C. SPECIFICATIONS FOR "THE DESIGN, FABRICATION & ERECTION OF STRUCTURAL STEEL FOR BUILDING".
 - WELDING SHALL CONFORM TO A.W.S. SPECIFICATIONS.
 - TEMPORARY BRACING AND SHORING AGAINST WIND AND ERECTION CONDITIONS TO BE THE RESPONSIBILITY OF THE CONTRACTOR.
 - ALL STEEL AND ALUMINUM SHALL BE SHOP PAINTED WITH ONE COAT PRIMER AND TWO COATS FLAT BLACK FINISH. PAINT SYSTEM TO BE USED SHALL BE APPROVED BY THE ENGINEER PRIOR TO FABRICATION. ALL FIELD WELD AREAS AND SCRATCHES SHALL BE TOUCHED UP AFTER ERECTION, USING THE SAME PAINT SYSTEM. (SEE STEEL RAILING NOTES, SHEET 2)
 - CONTRACTOR TO VERIFY ALL DIMENSIONS, ELEVATIONS AND EXISTING CONDITIONS AND REPORT ANY DISCREPANCIES TO THE PROJECT ENGINEER.
 - ALL EXPOSED CONCRETE SHALL BE OLD TOWN COLOR MIX OR APPROVED EQUAL CURED CONCRETE COLOR TO BE APPROVED BY THE PROJECT ENGINEER PRIOR TO CONSTRUCTION.
 - EXPOSED BRICK USED IN COLUMN CONSTRUCTION SHALL BE "MIDLAND OXIDE RED" STANDARD SIZE BRICK, MANUFACTURED BY GLEN GERRY OR APPROVED EQUAL. ALL BRICK SHALL BE GRADE SW AND SHALL MEET THE REQUIREMENTS OF ASTM C652 OR C 216-B6.

ENTRY COLUMNS & ARCHWAY ELEVATION LOOKING SOUTH

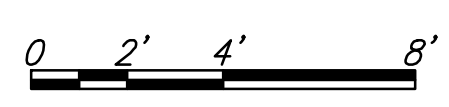


Recessed area to be painted flat black; Raised letters & border to be painted silver. Final color selection to be approved by the engineer prior to start of construction.



ARCHWAY SIGN DETAIL

Sign shall be cast aluminum, 1/4" plate with 1/4" raised letters and border.
NOTE:
Alternate fabrication method may be approved by the project engineer prior to fabrication.



MOSLEY & ROCK ISLAND		ALT 4 - Old Town Arch	
	RUGGLES & BOHM		DATE Dec. 2, 2015
	<small>ENGINEERING SURVEYING LANDSCAPE ARCHITECTURE GOVERNMENT</small> <small>924 NORTH MAIN WICHITA, KANSAS 67203 P (316) 264-8008 F (316) 264-4621 WWW.RUGGLESANDBOHM.COM</small>		DESIGN BT/DK
PROJECT NUMBER 472-85915	REV. JOB NO. 4531T	DWG. SCALE 10	DRAWN DK
DRAWINGS FILE 4531T Landscape Base [ALT 4 - Old Town Arch]			REVIEW 9-25-2015
			SHEET 57
			OF 59