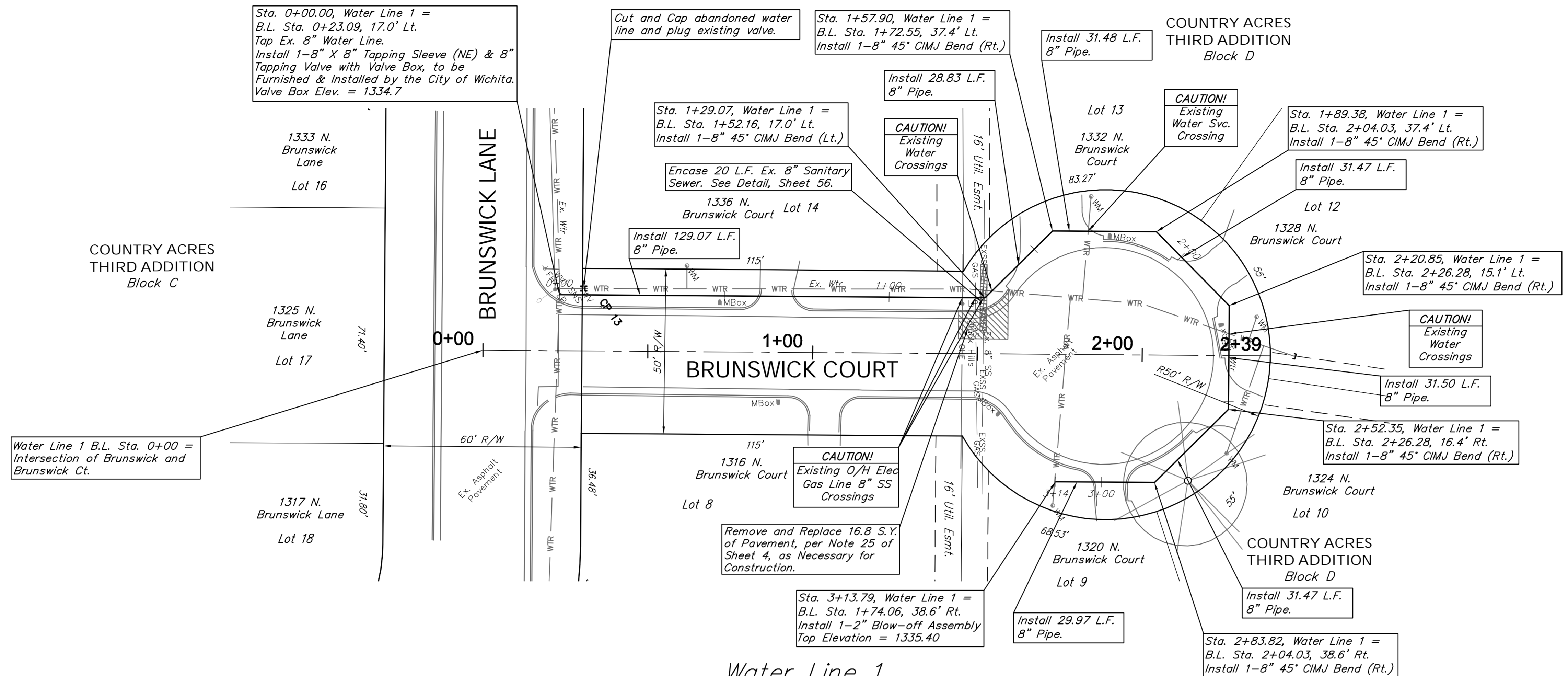


SCALE:
HORIZONTAL: 1" = 20'
VERTICAL: 1" = 5'



Water Line 1 B.L. Sta. 0+00 = Intersection of Brunswick and Brunswick Ct.

Water Line 1 B.L. Sta. = Centerline of Brunswick Ct.

Location of Existing Line is Based on Record Information from the City. The Contractor Shall Excavate the Ex. Water and to Verify Size and Location PRIOR to Beginning Construction. This Work Shall be Considered SUBSIDIARY to the Water Line Installation.



Water Line 1

1340	Sta. 0+00.00, Water Line 1 = B.L. Sta. 0+23.09, 17.0' Lt. Tap Ex. 8" Water Line. Install 1-8" X 8" Tapping Sleeve (NE) & 8" Tapping Valve with Valve Box, to be Furnished & Installed by the City of Wichita. Valve Box Elev. = 1334.7	1340
1335	Sta. 0+60.00, Water Line 1 - PVI	1335
1330	Sta. 1+29.07, Water Line 1 = B.L. Sta. 1+52.16, 17.0' Lt. Install 1-8" 45" CIMJ Bend (Lt.)	1330
1325	Sta. 1+57.90, Water Line 1 = B.L. Sta. 1+72.55, 37.4' Lt. Install 1-8" 45" CIMJ Bend (Rt.)	1325
1320	Sta. 1+89.38, Water Line 1 = B.L. Sta. 1+72.55, 37.4' Lt. Install 1-8" 45" CIMJ Bend (Rt.)	1320
1315	Sta. 2+20.85, Water Line 1 = B.L. Sta. 2+26.28, 15.1' Lt. Install 1-8" 45" CIMJ Bend (Rt.)	1315
1310	Sta. 2+83.82, Water Line 1 = B.L. Sta. 2+04.03, 38.6' Rt. Install 1-8" 45" CIMJ Bend (Rt.)	1310
	Sta. 3+13.79, Water Line 1 = B.L. Sta. 1+74.06, 38.6' Rt. Install 1-2" Blow-off Assembly Top Elevation = 1335.40	

Design: MWS
Drawn: STAFF
Approved: TPV
Scale: NOTED

Project No. 1309E968 CAPITAL IMPROVEMENT PROJECT
BRUNSWICK CT. WATER PLAN/PROFILE
Water Line 1 - Sta. 0+00.00 to Sta. 3+13.79
COUNTRY ACRES WATER MAIN REPLACEMENT PROJECT - PHASE 1a

Baughman Company, P.A.
315 Ellis St., Wichita, KS 67211 P 316-262-7271 F 316-262-0149
ENGINEERING | SURVEYING | PLANNING | LANDSCAPE ARCHITECTURE

January 2016
SHEET 5 OF 64