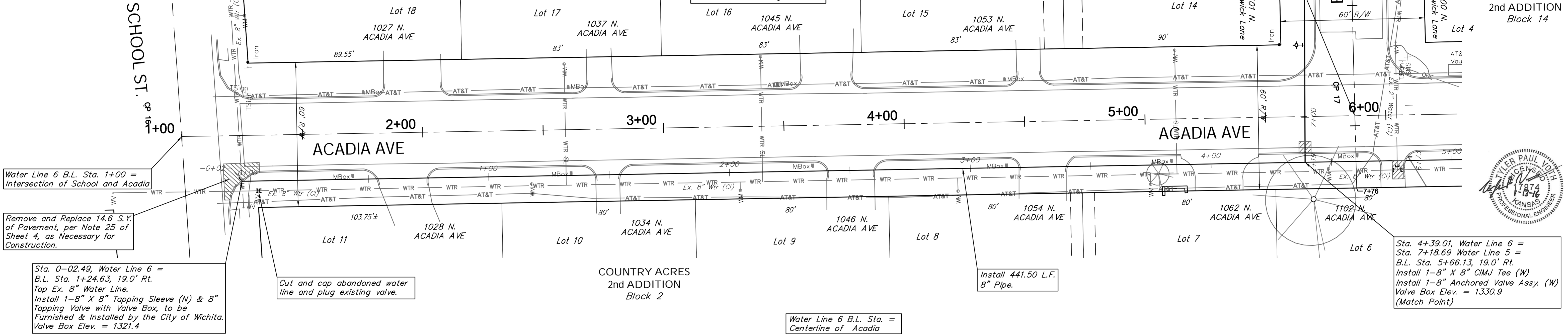


Location of Existing Line is Based on Record Information from the City. The Contractor Shall Excavate the Ex. Water and to Verify Size and Location PRIOR to Beginning Construction. This Work Shall be Considered SUBSIDIARY to the Water Line Installation.

1045 N. Acadia cannot be shut down until Contractor talks to Homeowner and confirms if there is a Kidney Machine. IF confirmed, then Contractor shall work with Homeowner on best possible Line 6 shut down and re-connection times.

Water Line 6 B.L. Sta. 5+87.16 = Intersection of Brunswick and Acadia

SCALE:
HORIZONTAL: 1" = 20'
VERTICAL: 1" = 5'



Water Line 6 B.L. Sta. 1+00 = Intersection of School and Acadia

Remove and Replace 14.6 S.Y. of Pavement, per Note 25 of Sheet 4, as Necessary for Construction.

Sta. 0-02.49, Water Line 6 = B.L. Sta. 1+24.63, 19.0' Rt. Tap Ex. 8" Water Line. Install 1-8" X 8" Tapping Sleeve (N) & 8" Tapping Valve with Valve Box, to be Furnished & Installed by the City of Wichita. Valve Box Elev. = 1321.4

Cut and cap abandoned water line and plug existing valve.

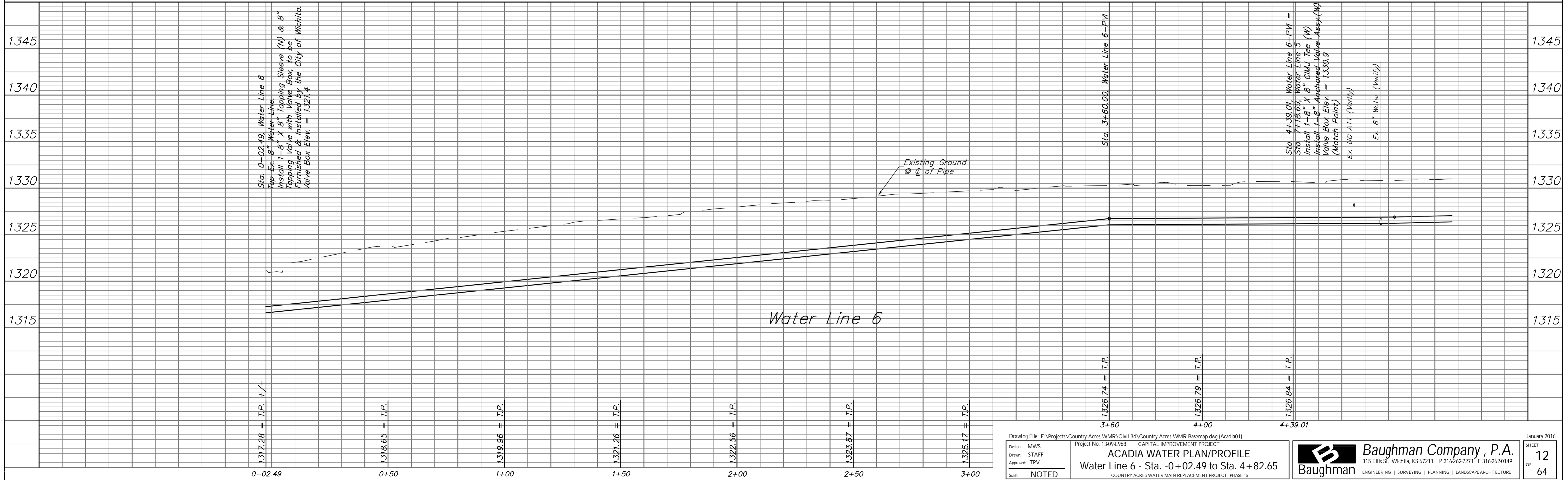
Install 441.50 L.F. 8" Pipe.

Sta. 4+39.01, Water Line 6 = Sta. 7+18.69 Water Line 5 = B.L. Sta. 5+66.13, 19.0' Rt. Install 1-8" X 8" CIMJ Tee (W) Install 1-8" Anchored Valve Assy. (W) Valve Box Elev. = 1330.9 (Match Point)

Water Line 6 B.L. Sta. = Centerline of Acadia



Water Line 6



Drawing File: E:\Projects\Country Acres WMR\Civil 3d\Country Acres WMR Basemap.dwg (Acadia01)

Design: MWS
Drawn: STAFF
Approved: TPV
Scale: NOTED

Project No. 1309E968 CAPITAL IMPROVEMENT PROJECT
ACADIA WATER PLAN/PROFILE
Water Line 6 - Sta. -0+02.49 to Sta. 4+82.65
COUNTRY ACRES WATER MAIN REPLACEMENT PROJECT - PHASE 1a

Baughman Company, P.A.
315 Ellis St., Wichita, KS 67211 P 316.262.7271 F 316.262.0149
ENGINEERING | SURVEYING | PLANNING | LANDSCAPE ARCHITECTURE

January 2016
SHEET 12 OF 64