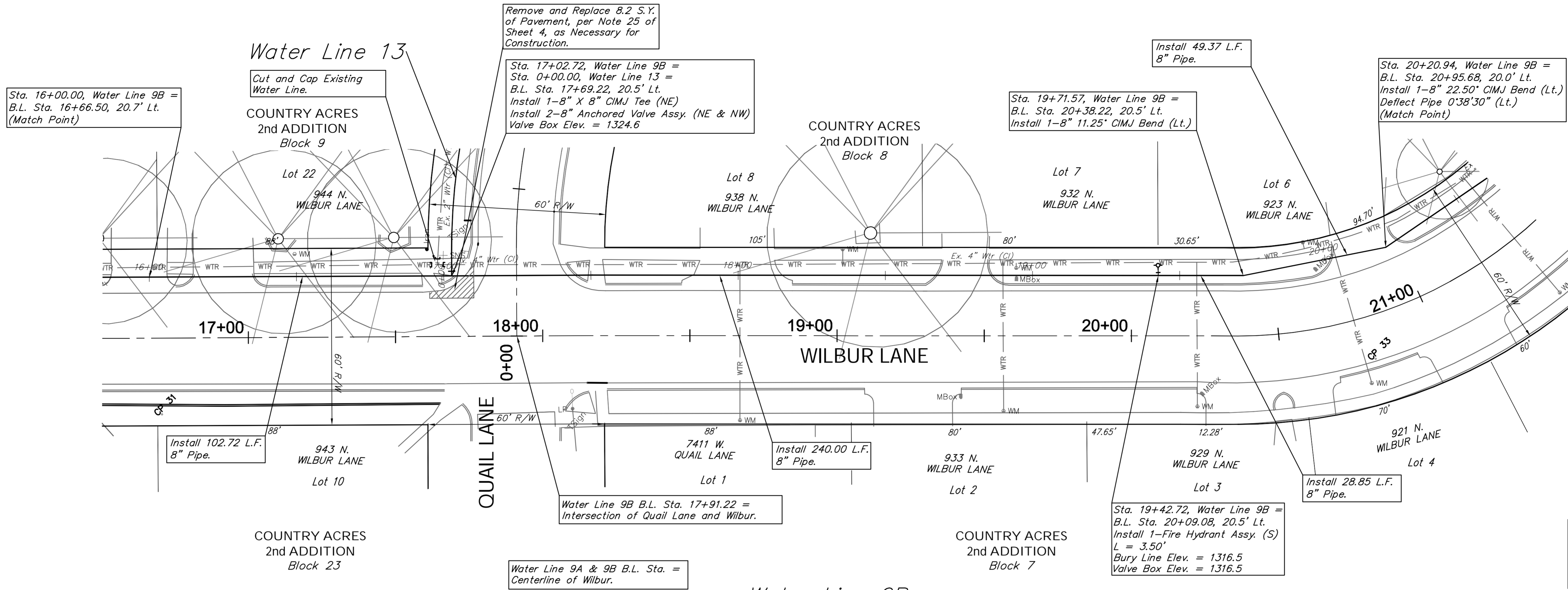
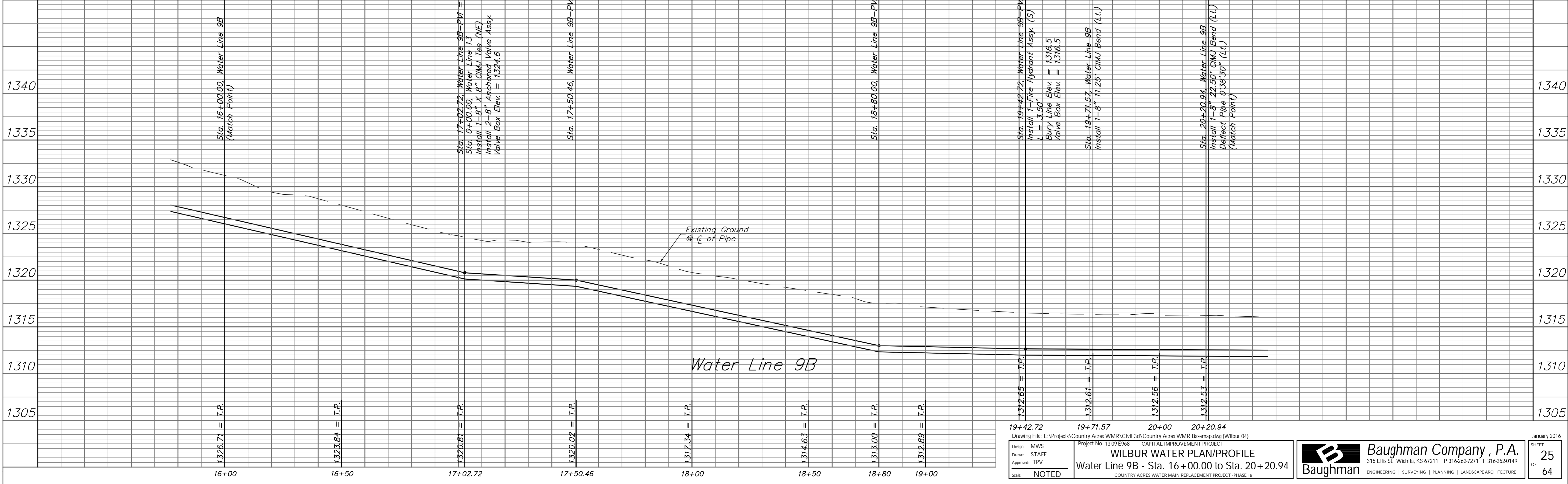


SCALE:
HORIZONTAL: 1" = 20'
VERTICAL: 1" = 5'



Location of Existing Line is Based on Record Information from the City. The Contractor Shall Excavate the Ex. Water and to Verify Size and Location PRIOR to Beginning Construction. This Work Shall be Considered SUBSIDIARY to the Water Line Installation.

Water Line 9B



19+42.72 19+71.57 20+00 20+20.94
 Drawing File: E:\Projects\Country Acres WMR\Civil 3d\Country Acres WMR Basemap.dwg (Wilbur 04)
 Project No. 1309E968 CAPITAL IMPROVEMENT PROJECT
WILBUR WATER PLAN/PROFILE
 Water Line 9B - Sta. 16+00.00 to Sta. 20+20.94
 COUNTRY ACRES WATER MAIN REPLACEMENT PROJECT - PHASE 1a

Baughman Company, P.A.
 315 Ellis St., Wichita, KS 67211 P 316.262.7271 F 316.262.0149
 ENGINEERING | SURVEYING | PLANNING | LANDSCAPE ARCHITECTURE

January 2016
 SHEET
 OF 25
 64