

SCALE:
 HORIZONTAL: 1" = 20'
 VERTICAL: 1" = 5'

Water Line 12A & 12B B.L. Sta. =
 Centerline of Country Acres.

Install 46.12 L.F.
 8" Pipe

B.L. Sta. 45+87.10, 36.8' Lt.
 Install 1-2" 90° Bend (S).
 Install 20.0 L.F. 2" Pipe with
 Tracer Wire.

Sta. 45+52.07, Water Line 12B =
 B.L. Sta. 46+96.36, 20.0' Lt.
 Install 1-8" 45° CIMJ Bend (Rt.)

CAUTION!
 Existing
 OHE
 Crossing

Sta. 46+67.26, Water Line 12B =
 B.L. Sta. 48+11.54, 20.0' Lt.
 Deflect Pipe 1'42" (Lt.)

Sta. 47+39.72, Water Line 12B =
 B.L. Sta. 48+83.98, 22.0' Lt.
 Remove existing 12" Cap from existing
 Tee (Per Water Dept. Records).
 Install 1-12"x8" CIMJ Reducer (S)
 Connect to existing Tee.

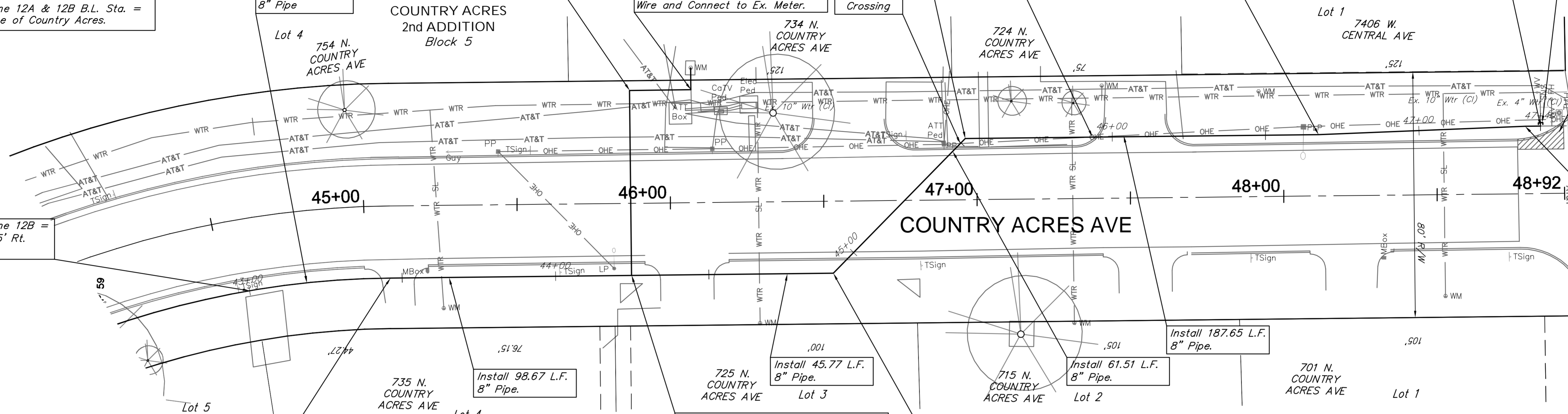
Cut and Cap Existing
 Water Line.

Remove and Replace 8.8 S.Y.
 of Pavement, per Note 25 of
 Sheet 4, as Necessary for
 Construction.

Water Line 12A & 12B
 B.L. Sta. 49+42.41 =
 Intersection of Central Ave.
 and Country Acres.

Sta. 47+34.72, Water Line 12B =
 B.L. Sta. 48+78.98, 22.0' Lt.
 Deflect Pipe 1'42" (Rt.)

Location of Existing Line is Based on Record
 Information from the City. The Contractor Shall
 Excavate the Ex. Water and to Verify Size and
 Location PRIOR to Beginning Construction. This
 Work Shall be Considered SUBSIDIARY to the
 Water Line Installation.



Sta. 43+46.12, Water Line 12B =
 B.L. Sta. 45+08.43, 23.5' Rt.
 P.T. of 290.1' Radius Curve.

COUNTRY ACRES
 2nd ADDITION
 Block 2

Sta. 44+24.79, Water Line 12B =
 B.L. Sta. 45+87.10, 23.5' Rt.
 Install 1 - Service Outlet Assy, 2"
 Install 60.3 L.F. 2" Pipe with Tracer
 Wire by Trenchless Methods.

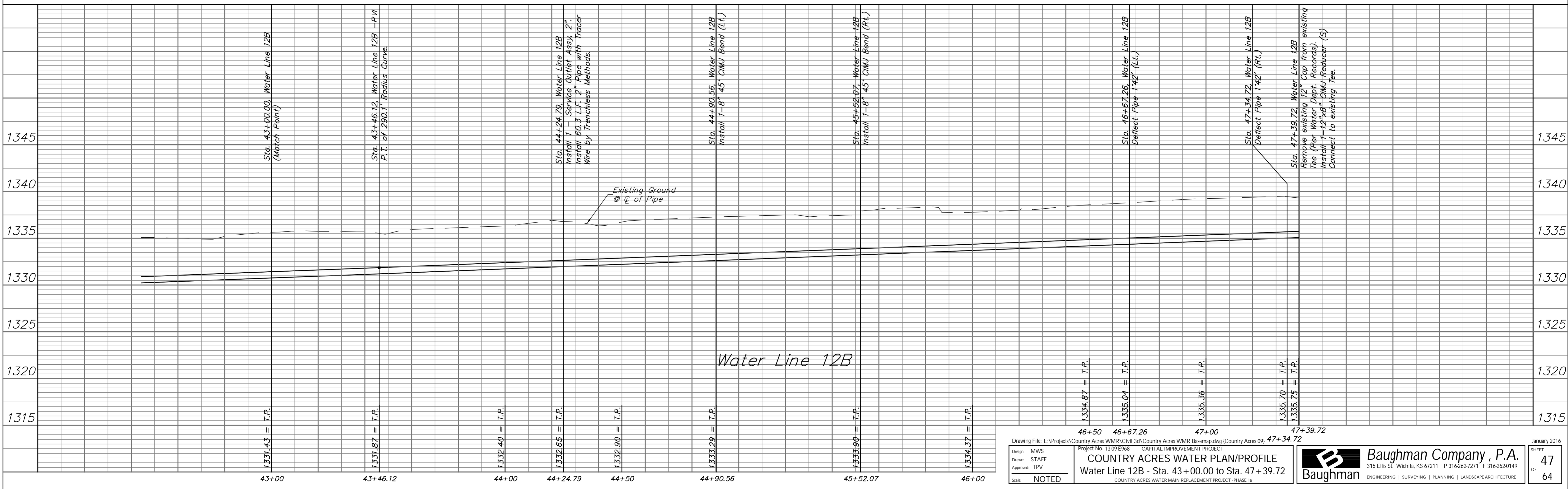
Sta. 44+90.56, Water Line 12B =
 B.L. Sta. 46+52.86, 23.5' Rt.
 Install 1-8" 45° CIMJ Bend (Lt.)

Install 61.51 L.F.
 8" Pipe.

Install 45.77 L.F.
 8" Pipe.

Install 98.67 L.F.
 8" Pipe.

Install 187.65 L.F.
 8" Pipe.



Design: MWS
 Drawn: STAFF
 Approved: TPV
 Scale: NOTED

Country Acres Water Main Replacement Project - Phase 1a
 Water Line 12B - Sta. 43+00.00 to Sta. 47+39.72

Baughman Company, P.A.
 315 Ellis St., Wichita, KS 67211 P 316-262-7271 F 316-262-0149
 ENGINEERING | SURVEYING | PLANNING | LANDSCAPE ARCHITECTURE

January 2016
 SHEET 47 OF 64