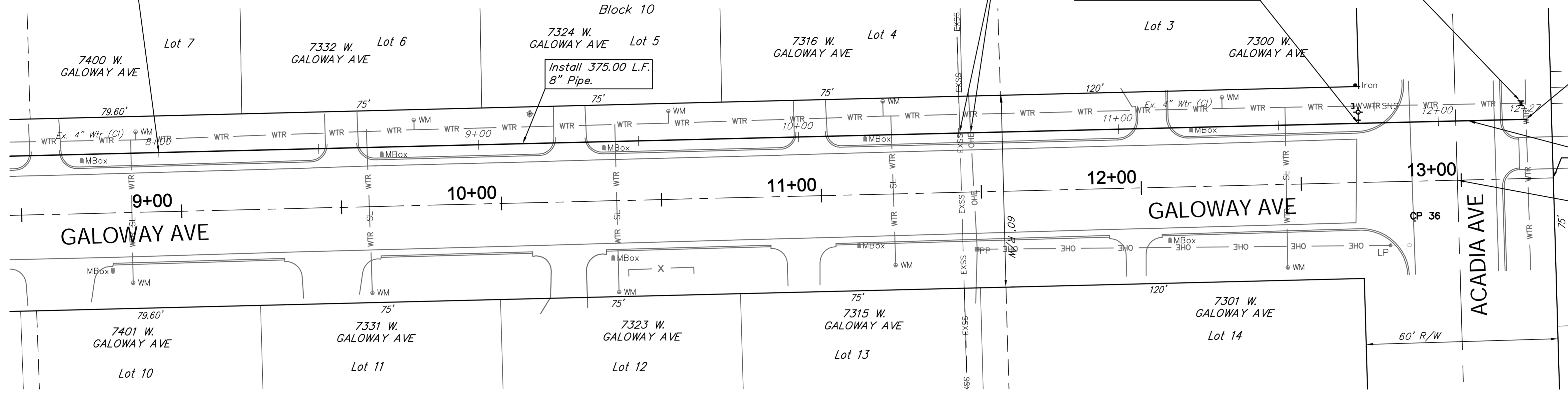


Sta. 8+00.00, Water Line 14B =  
B.L. Sta. 8+93.30, 18.5' Lt.  
(Match Point)



Sta. 12+27.47, Water Line 14B =  
B.L. Sta. 13+20.76, 18.5' Lt.  
Tap Ex. 8" Water Line.  
Install 1-8" X 8" Tapping Sleeve (W) & 8"  
Tapping Valve with Valve Box, to be  
Furnished & Installed by the City of Wichita.  
Valve Box Elev. = Match (All Valves)

Sta. 11+75.00, Water Line 14 =  
B.L. Sta. 12+68.30, 18.5' Lt.  
Install 1-Fire Hydrant Assy. (N)  
L = 3.50'  
Bury Line Elev. = 1317.4  
Valve Box Elev. = 1317.2

Install 52.47 L.F.  
8" Pipe.

Water Line 14A & 14B B.L. Sta. 1298.81 =  
Intersection of Acadia and Galoway.

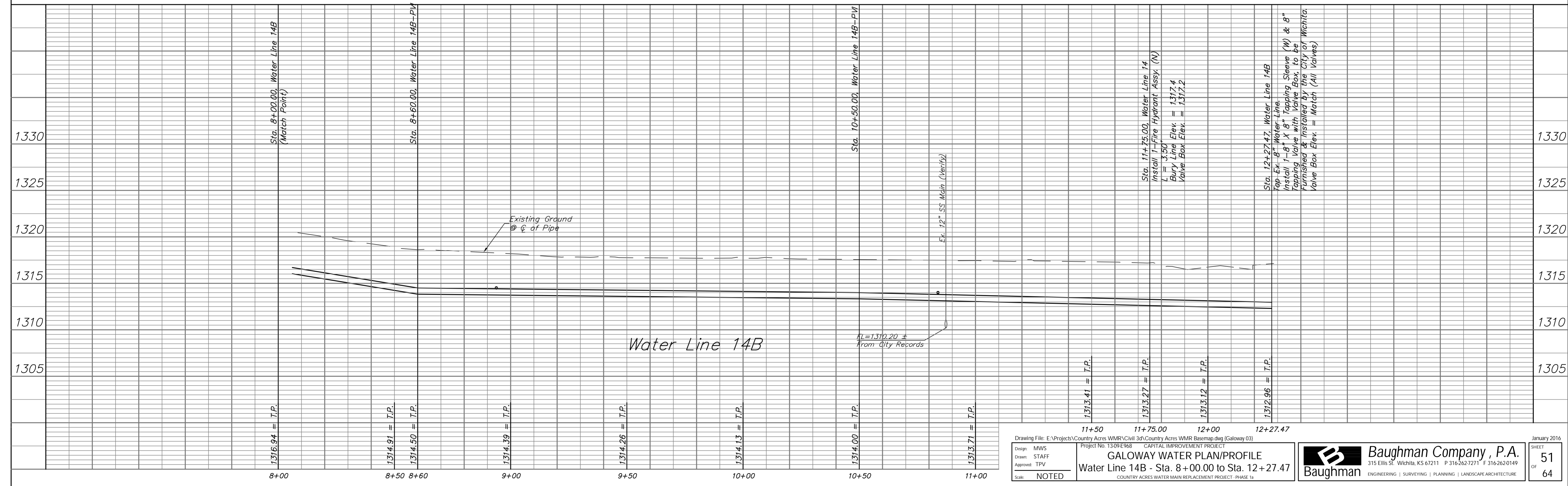
Water Line 14A & 14B B.L. =  
Centerline of Galoway.

SCALE:  
HORIZONTAL: 1" = 20'  
VERTICAL: 1" = 5'



Location of Existing Line is Based on Record  
Information from the City. The Contractor Shall  
Excavate the Ex. Water and to Verify Size and  
Location PRIOR to Beginning Construction. This  
Work Shall be Considered SUBSIDIARY to the  
Water Line Installation.

### Water Line 14B



Drawing File: E:\Projects\Country Acres WMR\Civil 3d\Country Acres WMR Basemap.dwg (Galoway 03)  
Project No. 1309E968 CAPITAL IMPROVEMENT PROJECT  
Design: MWS  
Drawn: STAFF  
Approved: TPV  
Scale: NOTED  
GALOWAY WATER PLAN/PROFILE  
Water Line 14B - Sta. 8+00.00 to Sta. 12+27.47  
COUNTRY ACRES WATER MAIN REPLACEMENT PROJECT - PHASE 1a

**Baughman Company, P.A.**  
315 Ellis St., Wichita, KS 67211 P 316-262-7271 F 316-262-0149  
ENGINEERING | SURVEYING | PLANNING | LANDSCAPE ARCHITECTURE

January 2016  
SHEET  
OF  
51  
64