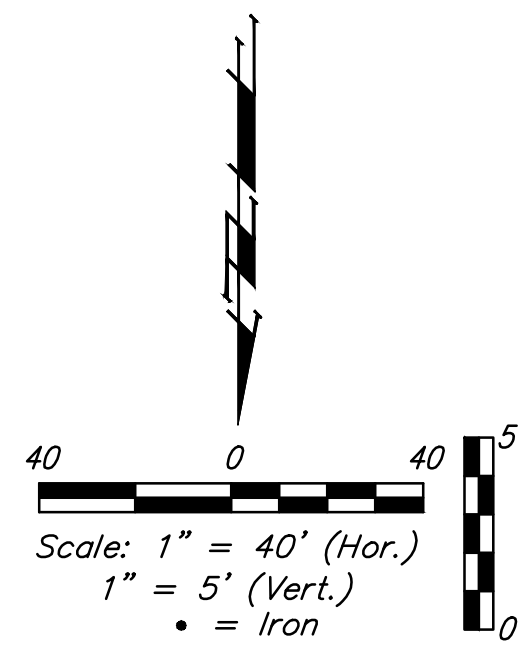
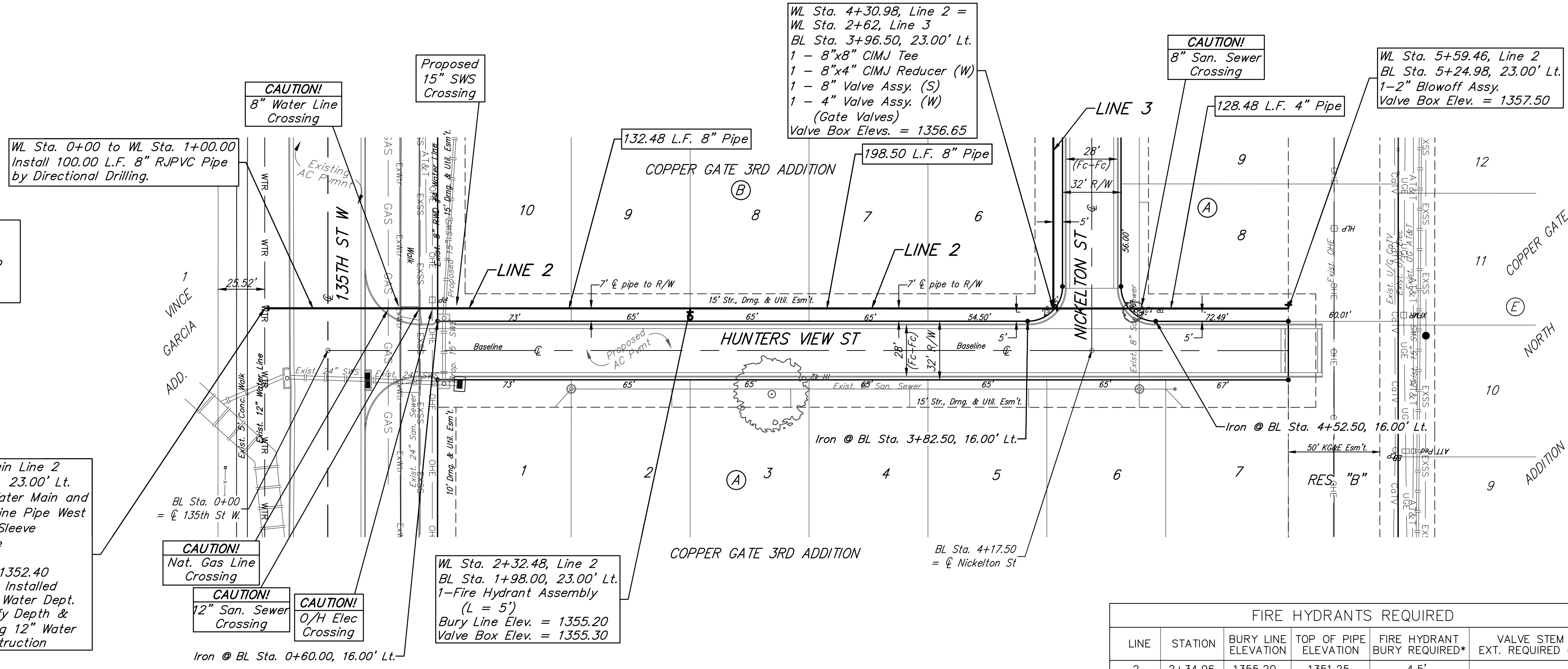


BENCHMARK:
 "X" cut top of the NE corner of
 drop inlet. 82.5'± north & 30.5'±
 west of the SE Cor., SE 1/4, Sec.
 11, TWP. 27-S, R-2-W.
 Elev. = 1353.75 (NAVD88)



Contractor shall contact Jim
 Hopper at 316-794-8891
 2 weeks prior to construction to
 coordinate crossing the Rural
 Water Dist. water line.

WL Sta. 0+00, Begin Line 2
 BL Sta. -0+34.48, 23.00' Lt.
 Tap Existing 12" Water Main and
 Extend 8" Water Line Pipe West
 1-12"x8" Tapping Sleeve
 1-8" Tapping Valve
 1-6" Valve Box
 Valve Box Elev. = 1352.40
 To Be Furnished & Installed
 by City of Wichita Water Dept.
 Contractor to Verify Depth &
 Location of Existing 12" Water
 Line Prior to Construction



CAUTION!
 Nat. Gas Line
 Crossing

CAUTION!
 12" San. Sewer
 Crossing

CAUTION!
 O/H Elec
 Crossing

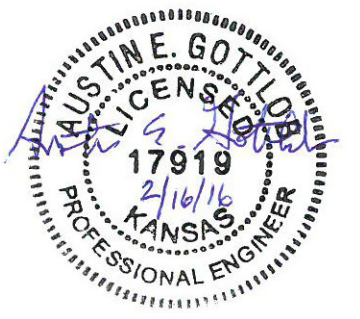
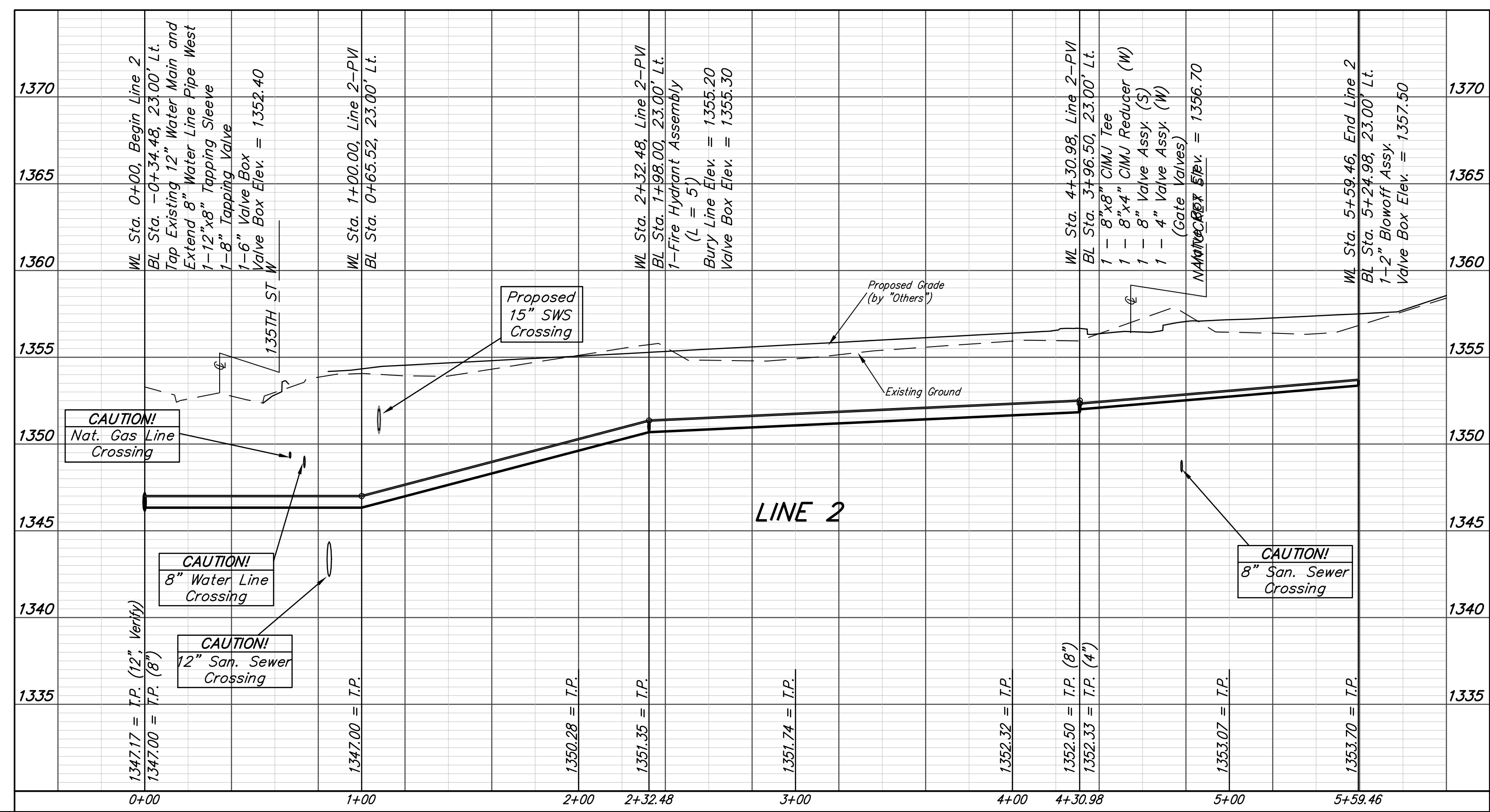
WL Sta. 4+30.98, Line 2 =
 WL Sta. 2+62, Line 3
 BL Sta. 3+96.50, 23.00' Lt.
 1 - 8"x8" CIMJ Tee
 1 - 8"x4" CIMJ Reducer (W)
 1 - 8" Valve Assy. (S)
 1 - 4" Valve Assy. (W)
 (Gate Valves)
 Valve Box Elev. = 1356.65

CAUTION!
 8" San. Sewer
 Crossing

WL Sta. 5+59.46, Line 2
 BL Sta. 5+24.98, 23.00' Lt.
 1-2" Blowoff Assy.
 Valve Box Elev. = 1357.50

FIRE HYDRANTS REQUIRED					
LINE	STATION	BURY LINE ELEVATION	TOP OF PIPE ELEVATION	FIRE HYDRANT BURY REQUIRED*	VALVE STEM EXT. REQUIRED (ft)*
2	2+34.96	1355.20	1351.25	4.5'	

Baseline =
 Q Hunters View Ct



	Copper Gate 3rd Addition	
	LINE 2	
Water Distribution System		
<small>Baughman Company, P.A. 315 Ellis St. Wichita, KS 67211 P 316-262-7271 F 316-262-0149 ENGINEERING SURVEYING PLANNING LANDSCAPE ARCHITECTURE</small>		
PROJECT NUMBER 448-90708	DESIGN AEG	DRAWN JAK
REVISIONS:	APPROVED	DATE 2/15/16
	SCALE Noted	SHEET
		5 OF 15