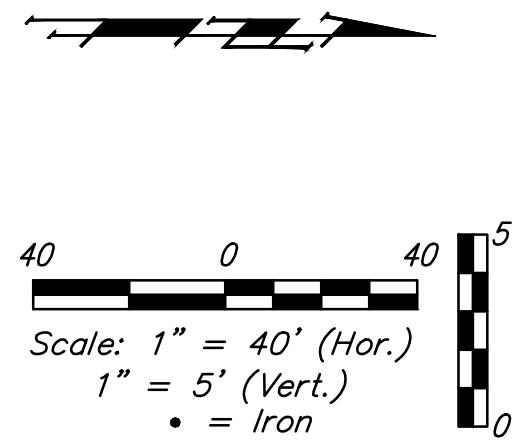
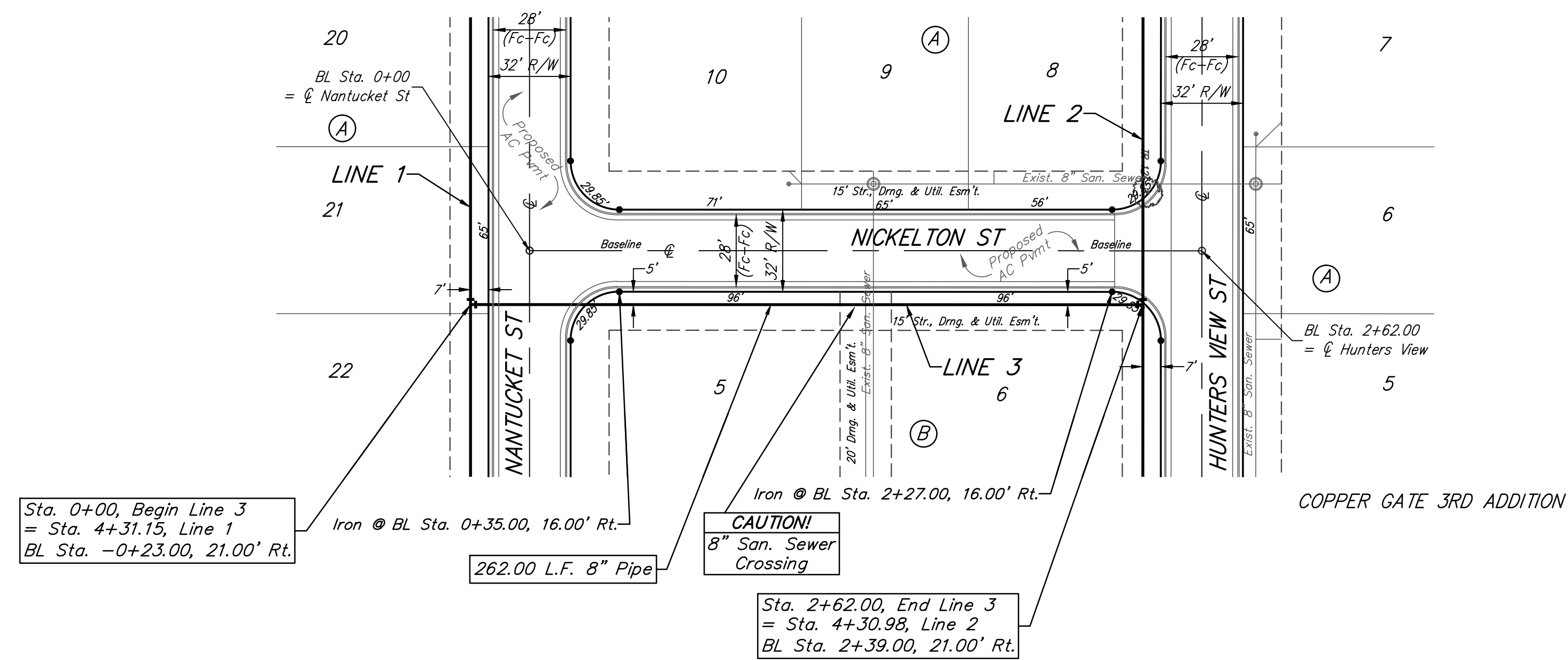
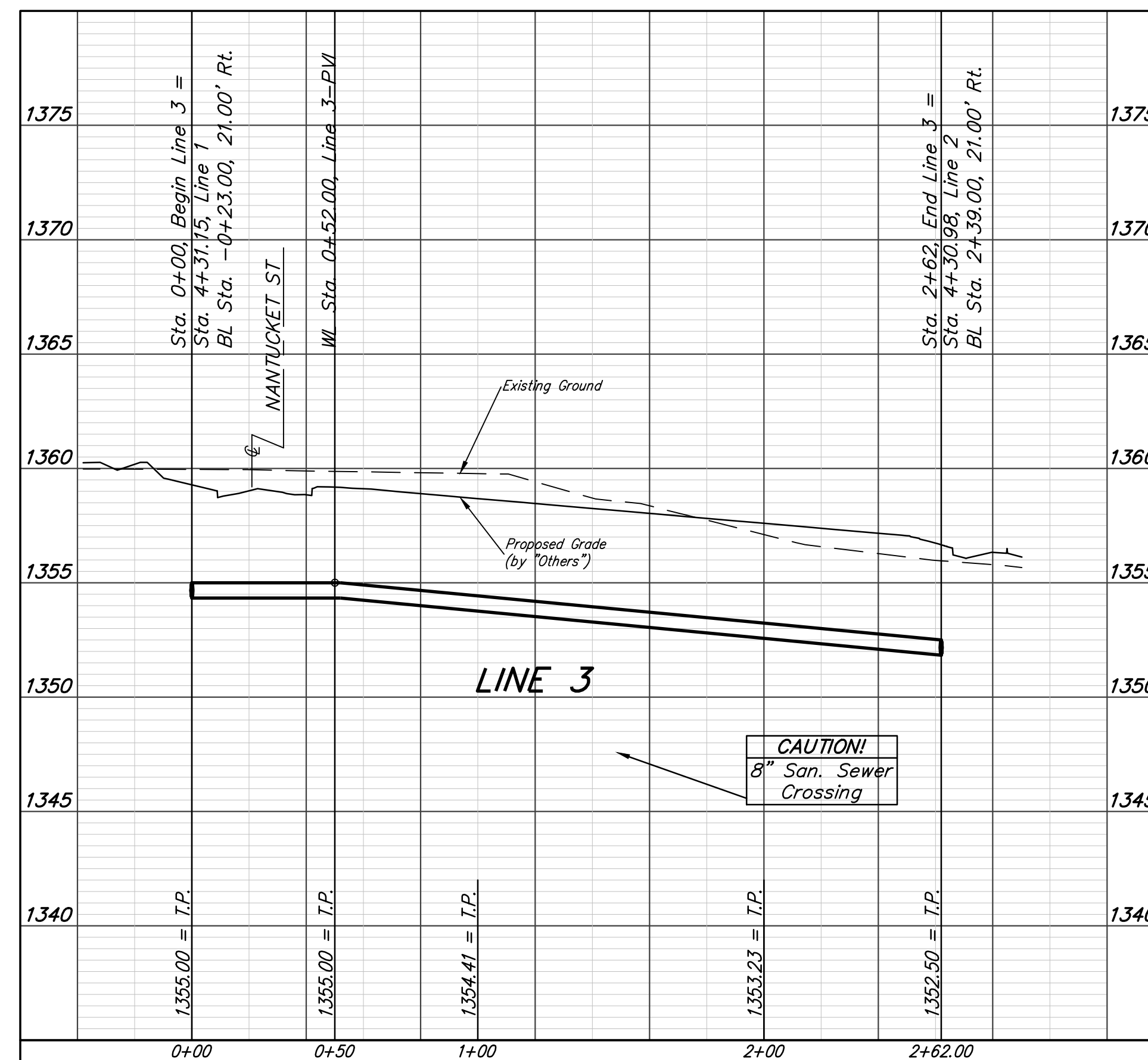


BENCHMARK:
 "X" cut top of the NE corner of
 drop inlet. 82.5'± north & 30.5'±
 west of the SE Cor., SE1/4, Sec.
 11, TWP. 27-S, R-2-W.
 Elev. = 1353.75 (NAVD88)

COPPER GATE 3RD ADDITION



Baseline =
 @ Nickelton St



		Copper Gate 3rd Addition	
		LINE 3	
Baughman Company, P.A. 315 Ellis St. Wichita, KS 67211 P 316-262-7271 F 316-262-0149 ENGINEERING SURVEYING PLANNING LANDSCAPE ARCHITECTURE		DESIGN AEG	DRAWN JAK
PROJECT NUMBER 448-90708	APPROVED	DATE 2/15/16	
REVISIONS:	SCALE Noted		
			SHEET 6 OF 15