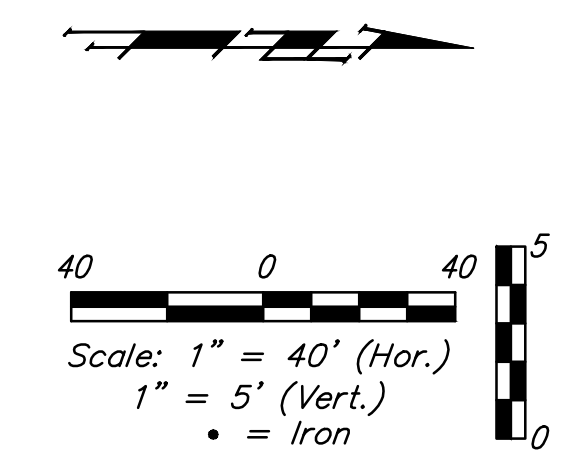
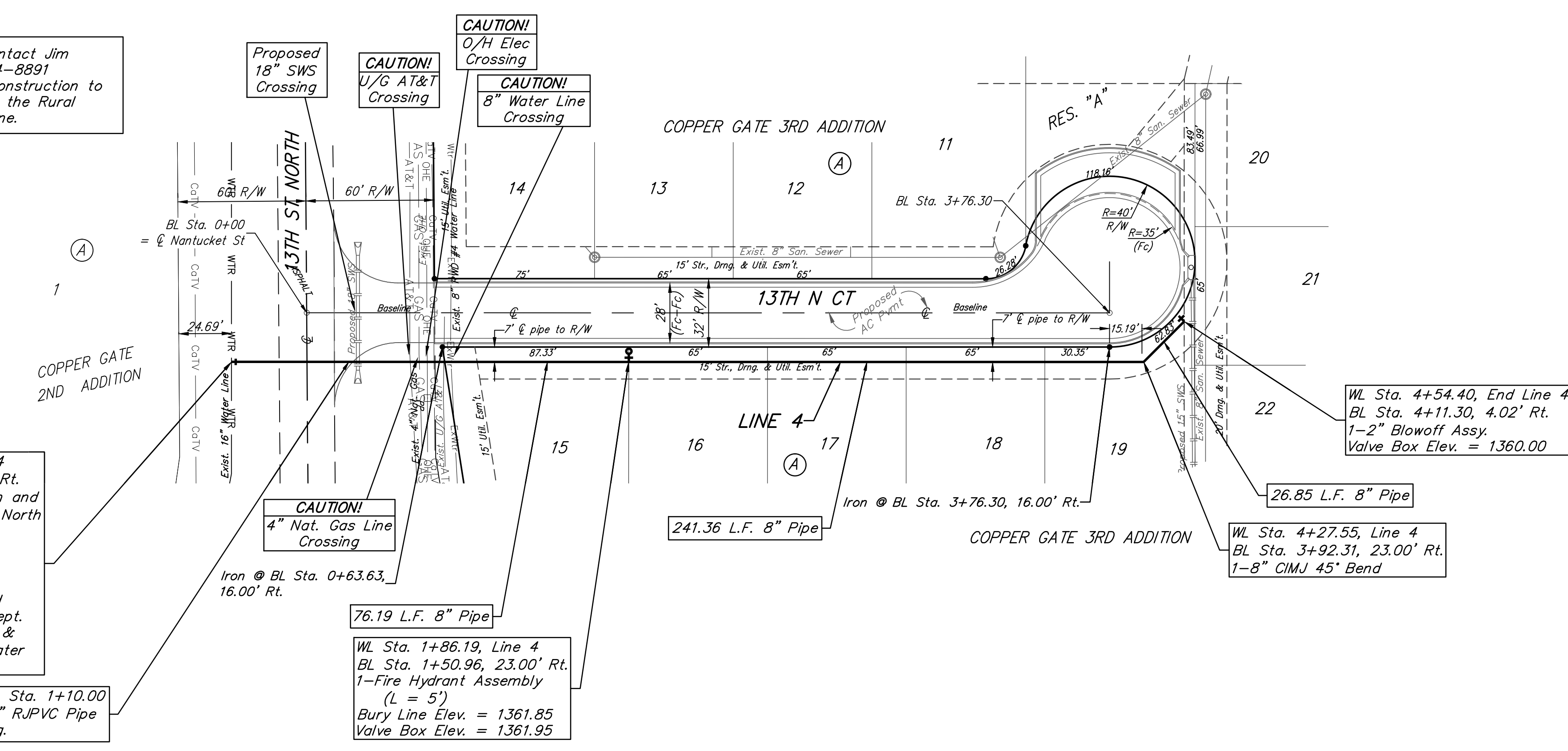


BENCHMARK:
 "X" cut top of the NE corner of
 drop inlet. 82.5'± north & 30.5'±
 west of the SE Cor., SE 1/4, Sec.
 11, TWP. 27-S, R-2-W.
 Elev. = 1353.75 (NAVD88)

Contractor shall contact Jim
 Hopper at 316-794-8891
 2 weeks prior to construction to
 coordinate crossing the Rural
 Water Dist. water line.

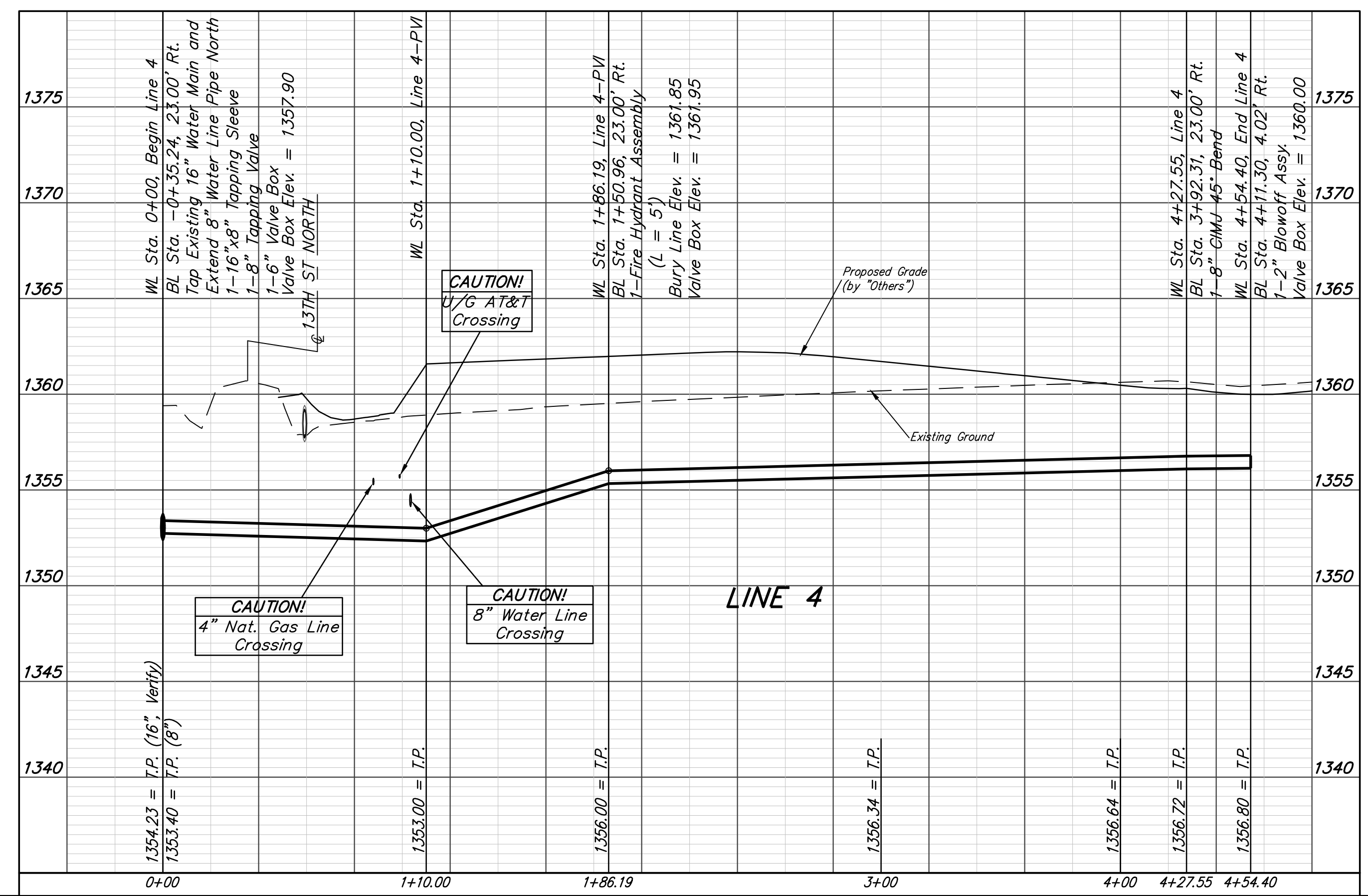
WL Sta. 0+00, Begin Line 4
 BL Sta. -0+35.24, 23.00' Rt.
 Tap Existing 16" Water Main and
 Extend 8" Water Line Pipe North
 1-16"x8" Tapping Sleeve
 1-8" Tapping Valve
 1-6" Valve Box
 Valve Box Elev. = 1357.90
 To Be Furnished & Installed
 by City of Wichita Water Dept.
 Contractor to Verify Depth &
 Location of Existing 16" Water
 Line Prior to Construction

WL Sta. 0+00 to WL Sta. 1+10.00
 Install 110.00 L.F. 8" R/PVC Pipe
 by Directional Drilling.



FIRE HYDRANTS REQUIRED					
LINE	STATION	BURY LINE ELEVATION	TOP OF PIPE ELEVATION	FIRE HYDRANT BURY REQUIRED*	VALVE STEM EXT. REQUIRED (ft)*
3	1+86.19	1361.85	1356.00	6.5'	

Baseline =
 ☉ 13th St N



Baughman Copper Gate 3rd Addition
LINE 4
 Water Distribution System

Baughman Company, P.A. 315 Ellis St. Wichita, KS 67211 P 316-262-7271 F 316-262-0149
 ENGINEERING | SURVEYING | PLANNING | LANDSCAPE ARCHITECTURE

<small>PROJECT NUMBER 448-90708</small>	<small>DESIGN AEG</small>
<small>REVISIONS:</small>	<small>DRAWN JAK</small>
	<small>APPROVED DATE 2/15/16</small>
	<small>SCALE Noted</small>
	<small>SHEET</small>

7 OF 15

E:\Projects\Copper Gate 3rd Addition_Engineering\Wtr_1510E321\WTR PLANS.dwg