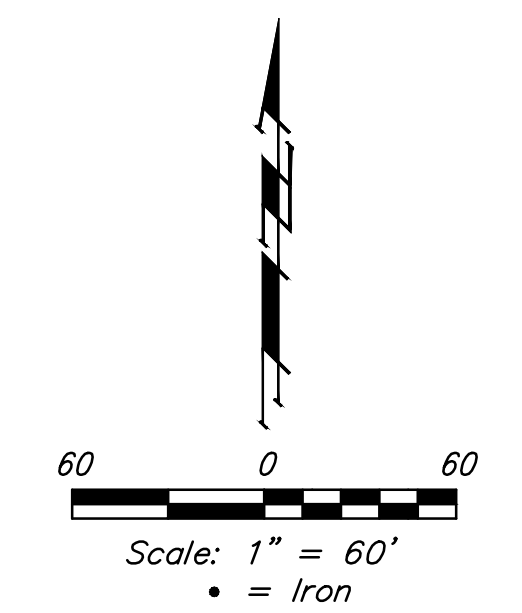
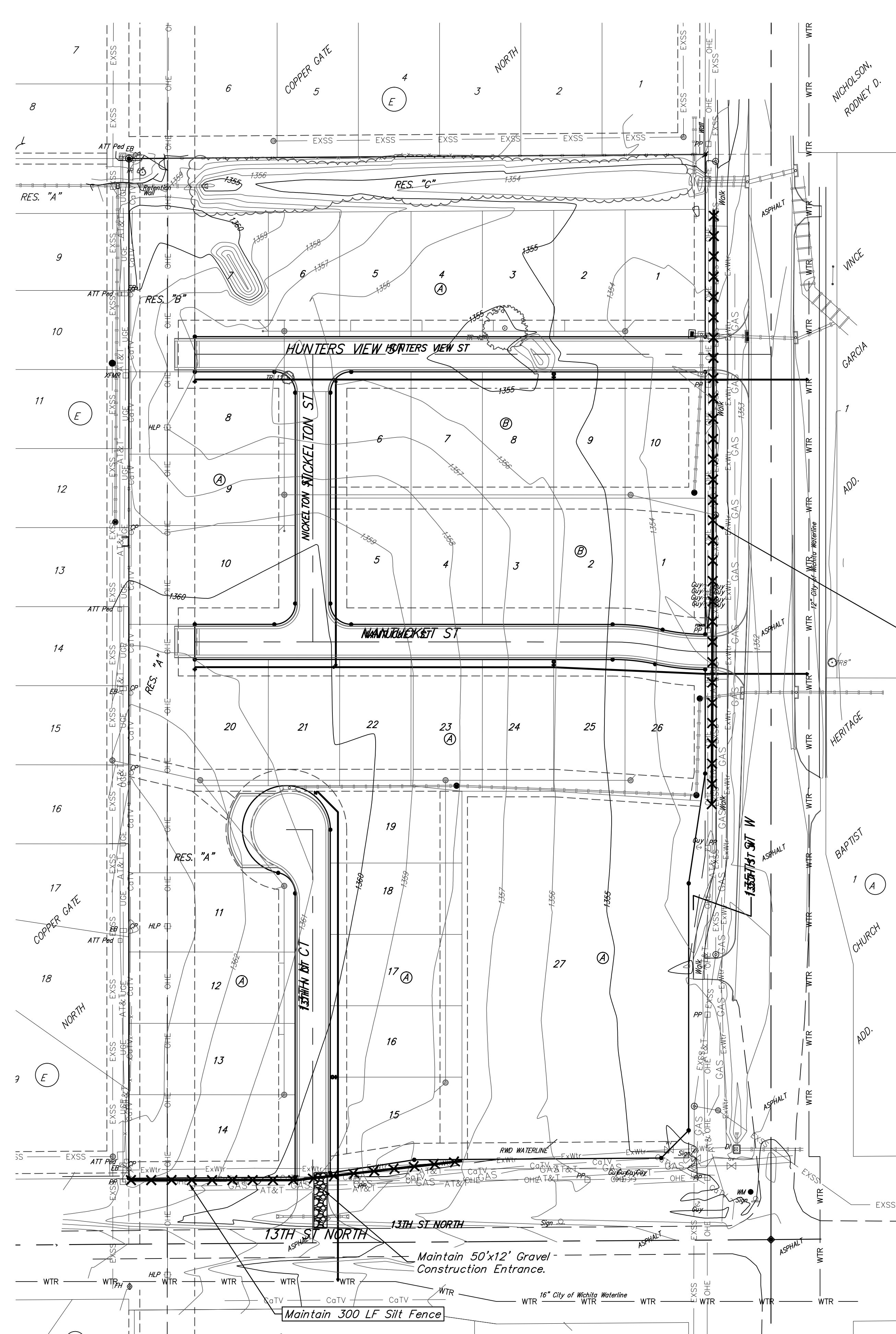


BENCHMARK:
 "X" cut top of the NE corner of drop inlet. 82.5'± north & 30.5'± west of the SE Cor., SE1/4, Sec. 11. TWP. 27-S, R-2-W. Elev. = 1353.75 (NAVD88)



Existing Ground ——— 1364 ———
 X — SILT FENCING

Maintain 550 LF Silt Fence

Maintain 50'x12' Gravel Construction Entrance.

Maintain 300 LF Silt Fence

NOTES:
 Contractor shall make sure all erosion control is in place before project is accepted. This plan represents the minimum standard. Any additional erosion control measures shall be installed by the Contractor as needed.

All areas disturbed during construction shall be seeded, mulched, and fertilized as per Cover Sheet General Notes.

EROSION CONTROL MEASURE	MAINTAIN
CUTT-OFF TRENCH (LF)	0
CONSTRUCTION ENTRANCE (EA)	1
CURB INLET BARRIER (EA)	0
DITCH CHECK (EA)	0
DROP INLET PROTECTION (EA)	0
EROSION CONTROL (LS)	0
MULCH WATTLES (LF)	0
SILT FENCE (LF)	850
EROSION CONTROL MAT (SY)	0
MAINTAIN EROSION CONTROL BMP's (LS)	1

* ALL EXISTING BMPs INCLUDING CONSTRUCTION ENTRANCE, SEDIMENT BARRIERS, SILT FENCE, CUT-OFF TRENCH, AND EROSION CONTROL MAT SHALL BE MAINTAINED AND REPAIRED IF NECESSARY.



Baughman Engineering & Surveying | Planning | Landscape Architecture

Copper Gate 3rd Addition
EROSION CONTROL
 Water Distribution System

Baughman Company, P.A. 315 Ellis St. Wichita, KS 67211 P 316-262-7271 F 316-262-0149
 ENGINEERING | SURVEYING | PLANNING | LANDSCAPE ARCHITECTURE

PROJECT NUMBER 448-90708	DESIGN AEG	DRAWN JAK
REVISIONS:	APPROVED	DATE 2/15/16
	SCALE Noted	SHEET 8 OF 15