

N. 1646811.281, E. 1657877.994
 16" WL Line No. 1, Sta. 1+00.00
 Remove Existing 16" Cap and salvage to the City of Wichita.
 Connect to Exist. 16" WL
 Install 16" Valve Assembly
 Top of Valve Box El.=1263.43
 See detail sht. 10.
 Field verify horizontal and vertical location prior to construction. Coordinate connection with City of Wichita.

N. 1646812.638, E. 1657952.981
 16" WL Line No. 1, Sta. 1+75.00
 Horiz. Defl. Angle=00°55'36" (Lt.)

N. 1646822.288, E. 1658407.866
 16" WL Line No. 1, Sta. 6+30.00
 1" Air Release Assembly
 See detail sht. 11.

N. 1646822.372, E. 1658412.865
 16" WL Line No. 1, Sta. 6+35.00
 Install 16" Valve Assembly
 Top of Valve Box El.=1265.23
 See detail sht. 10.
 Install 16"x18" CIMJ Reducer
 Transition to 18" HDPE WL Pipe
 See HDPE Transition Detail A sht. 7.

N. 1646816.564, E. 1658067.477
 16" WL Line No. 1, Sta. 2+89.56
 Horiz. Defl. Angle=01°00'01" (Rt.)

N. 1646821.783, E. 1658377.870
 16" WL Line No. 1, Sta. 6+00.00
 Install Fire Hydrant Assembly
 L=19.00'
 Fire hydrant pipe shall be ductile iron restrained joint.
 Top of Valve Box El.=1265.20
 Fire Hydrant Bury El.=1267.40
 See detail sht. 10.

NOTES:

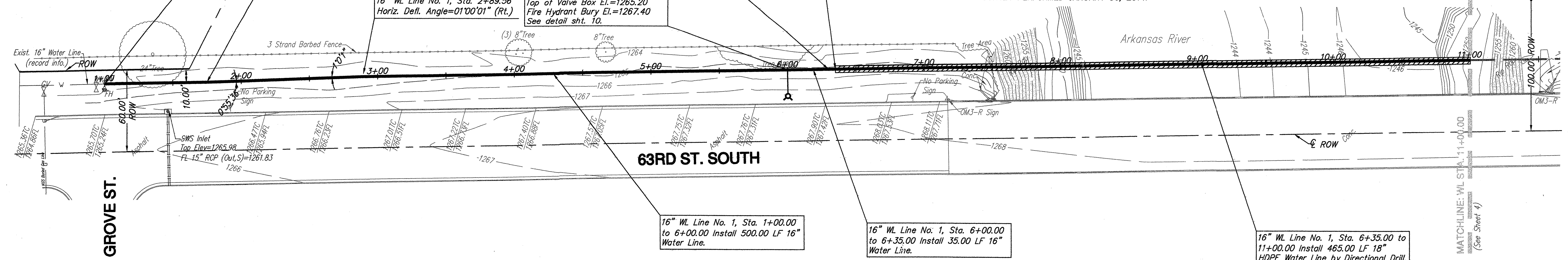
1. THE CONTRACTOR SHALL USE BEST MANAGEMENT PRACTICES TO CONTROL EROSION AND SEDIMENT DISCHARGE IN ALL DISTURBED AREAS OF CONSTRUCTION. THE CONTRACTOR SHALL PROVIDE ALL NECESSARY MATERIALS, AND EQUIPMENT, AND LABOR TO CONSTRUCT, OPERATE AND MAINTAIN TEMPORARY EROSION AND SEDIMENT CONTROLS DURING CONSTRUCTION.
2. THE CONTRACTOR SHALL FIELD VERIFY HORIZONTAL AND VERTICAL LOCATIONS OF ALL EXISTING BURIED UTILITY LINES PRIOR TO CONSTRUCTION. REPORT ANY DISCREPANCIES TO THE ENGINEER.
3. ITEMS TO BE SALVAGED TO THE CITY SHALL BE DELIVERED TO THE CITY'S CENTRAL MAINTENANCE FACILITY (CMF) AT 1801 S. McLEAN BLVD.
4. THE TOPOGRAPHIC INFORMATION IN THE PLAN VIEW AND "EXISTING GROUND" IN THE PROFILE ARE BASED ON A SURVEY PERFORMED JANUARY 30, 2014.

LEGEND:

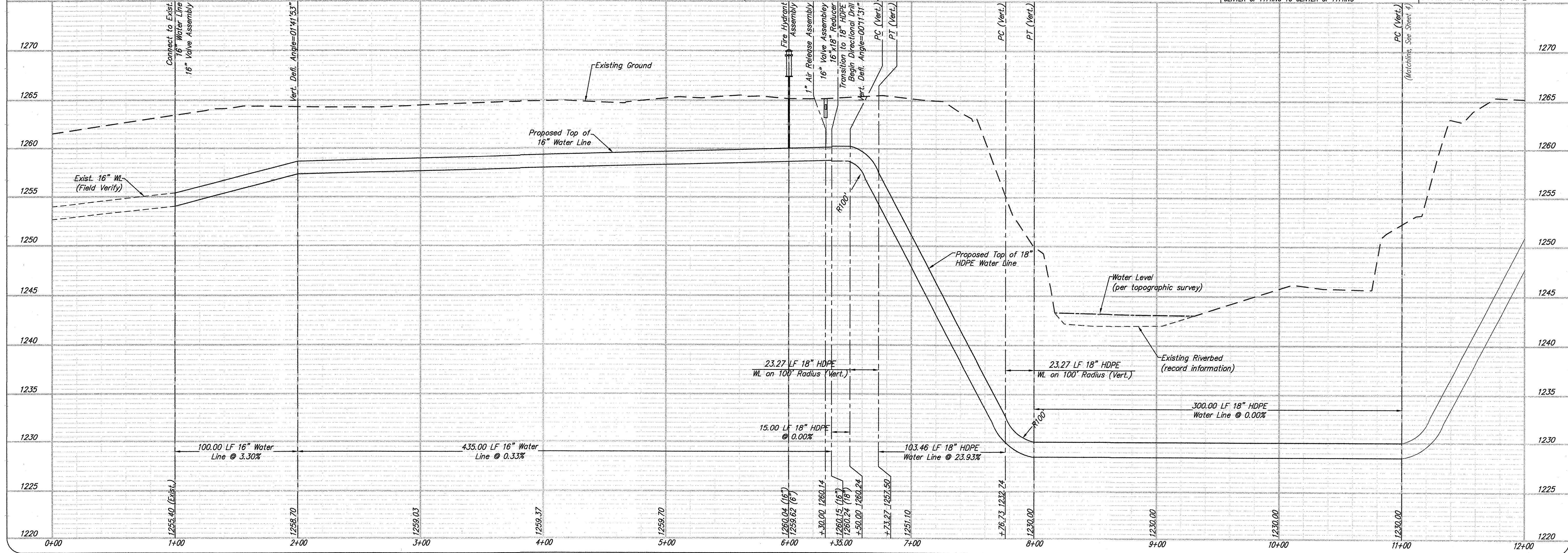
- W — Water Line
- T — Buried Telephone Line
- G — Gas Line
- S — Storm Water Sewer Line
- - - - - Exist. Contour (1-ft. Intervals)
- ⊗ GV — Gas Valve
- ⊗ WV — Water Valve
- ⊗ FH — Fire Hydrant



HORIZ. (FEET)
 VERT. (FEET)
 GRAPHIC SCALE FOR 1" = 40'



WATER LINE NO. 1 (STA. 1+00.00 TO 11+00.00) - PROFILE



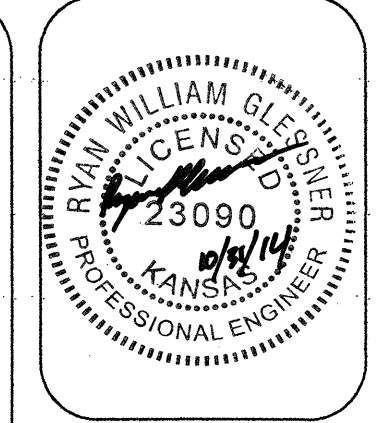
UNLESS OTHERWISE NOTED, DIMENSIONS SHOWN ARE CENTER OF FITTING TO CENTER OF FITTING

UNLESS OTHERWISE NOTED, ELEVATIONS SHOWN ARE TO TOP OF PIPE

16" WATER LINE NO. 1 - STA 1+00.00 TO 11+00.00 PLAN & PROFILE
 63rd Street South 16" Water Main Extension
 City of Wichita
 Sedgwick County, Kansas

scale: as noted

Design By: RWG
 Drawn By: DSB
 Checked By: CRY
 P/N: 13-348
 Prints Issued:
 Field Check, 2-14-14
 Office Check, 5-9-14
 Final Plans, 10-30-14
 Revisions:



YOUNG & ASSOCIATES, P.A.
 Professional Civil Engineering Consultants
 100 S. Geary, Derby, KS 67037
 tel: (316) 788-2552 fax: (316) 788-4408 email: engineering@ynypca.com
 This plan and design are the exclusive property of Young & Associates, P.A. The plan and design are not to be used for any other project without the written consent of Young & Associates, P.A. This plan and design are not to be used for any other project without the written consent of Young & Associates, P.A. This plan and design are not to be used for any other project without the written consent of Young & Associates, P.A.