

NOTES:

1. THE CONTRACTOR SHALL USE BEST MANAGEMENT PRACTICES TO CONTROL EROSION AND SEDIMENT DISCHARGE IN ALL DISTURBED AREAS OF CONSTRUCTION. THE CONTRACTOR SHALL PROVIDE ALL NECESSARY MATERIALS, AND EQUIPMENT, AND LABOR TO CONSTRUCT, OPERATE AND MAINTAIN TEMPORARY EROSION AND SEDIMENT CONTROLS DURING CONSTRUCTION.
2. THE CONTRACTOR SHALL FIELD VERIFY HORIZONTAL AND VERTICAL LOCATIONS OF ALL EXISTING BURIED UTILITY LINES PRIOR TO CONSTRUCTION. REPORT ANY DISCREPANCIES TO THE ENGINEER.
3. ITEMS TO BE SALVAGED TO THE CITY SHALL BE DELIVERED TO THE CITY'S CENTRAL MAINTENANCE FACILITY (CMF) AT 1801 S. McLEAN BLVD.
4. THE TOPOGRAPHIC INFORMATION IN THE PLAN VIEW AND "EXISTING GROUND" IN THE PROFILE ARE BASED ON A SURVEY PERFORMED JANUARY 30, 2014.

N. 1646832.964, E. 1659042.776
16" WL Line No. 1, Sta. 12+65.00
Install 16"x18" CIMJ Reducer
Transition to 16" WL Pipe
See HDPE Transition Detail B sht. 7.
Install 16" Valve Assembly
Top of Valve Box El.=1265.20
See detail sht. 10.

Remove and Reset existing Wood Post and Cable Fence, In Kind. Posts shall not be reset directly above the water main. Cables shall be tensioned to match pre-construction conditions. Subsidiary to Site Restoration.

N. 1646833.552, E. 1659077.771
16" WL Line No. 1, Sta. 13+00.00
Install Fire Hydrant Assembly
L=19.00'
Fire hydrant pipe shall be ductile iron restrained joint.
Top of Valve Box El.=1265.10
Fire Hydrant Bury El.=1267.40
See detail sht. 10.

N. 1646841.454, E. 1659547.705
16" WL Line No. 1, Sta. 17+70.00
Install 1" Air Release Assembly.
See detail sht. 11.

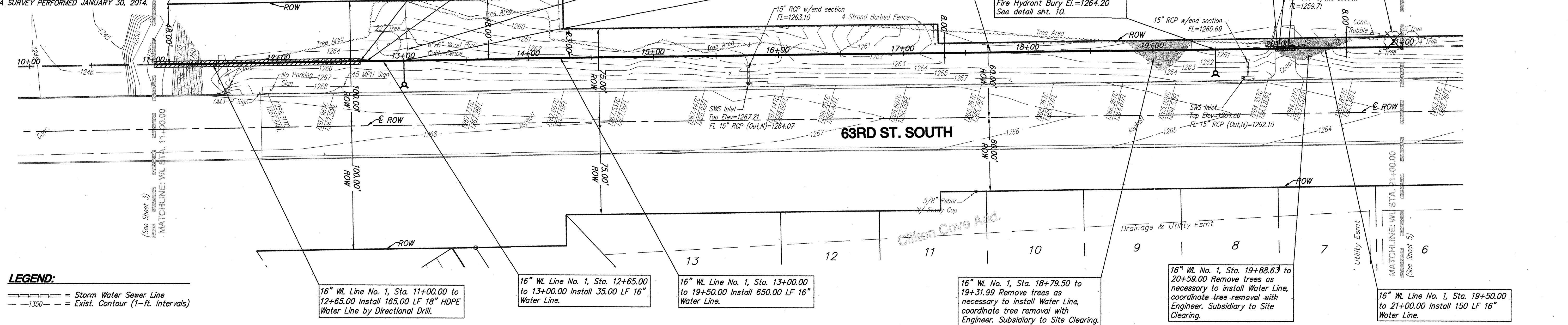
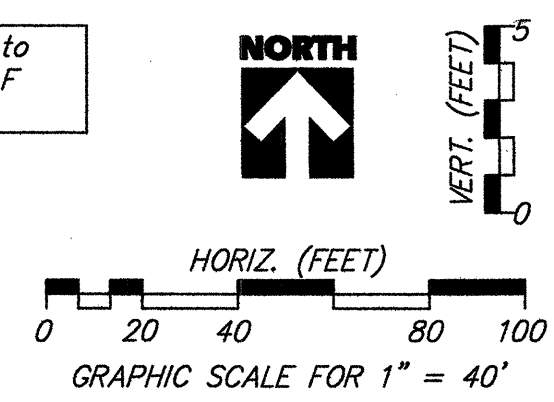
16" WL Line No. 1, Sta. 19+98.05 to 20+14.01
Remove & Replace approx. 15.96 LF of Concrete Pavement, In Kind.
Tie both sides of proposed pavement to existing pavement, see detail sht. 5.

16" WL No. 1, Sta. 19+96.03 to 20+16.03 Install approx. 20 LF Flowable Fill.

16" WL No. 1, Remove Small Tree, Subsidiary to Site Clearing.

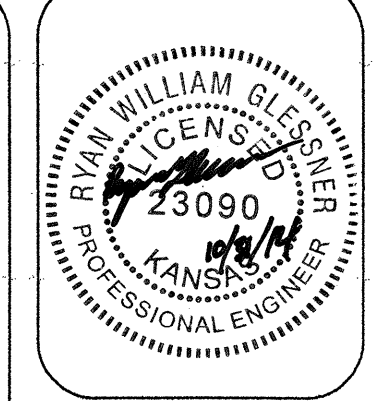
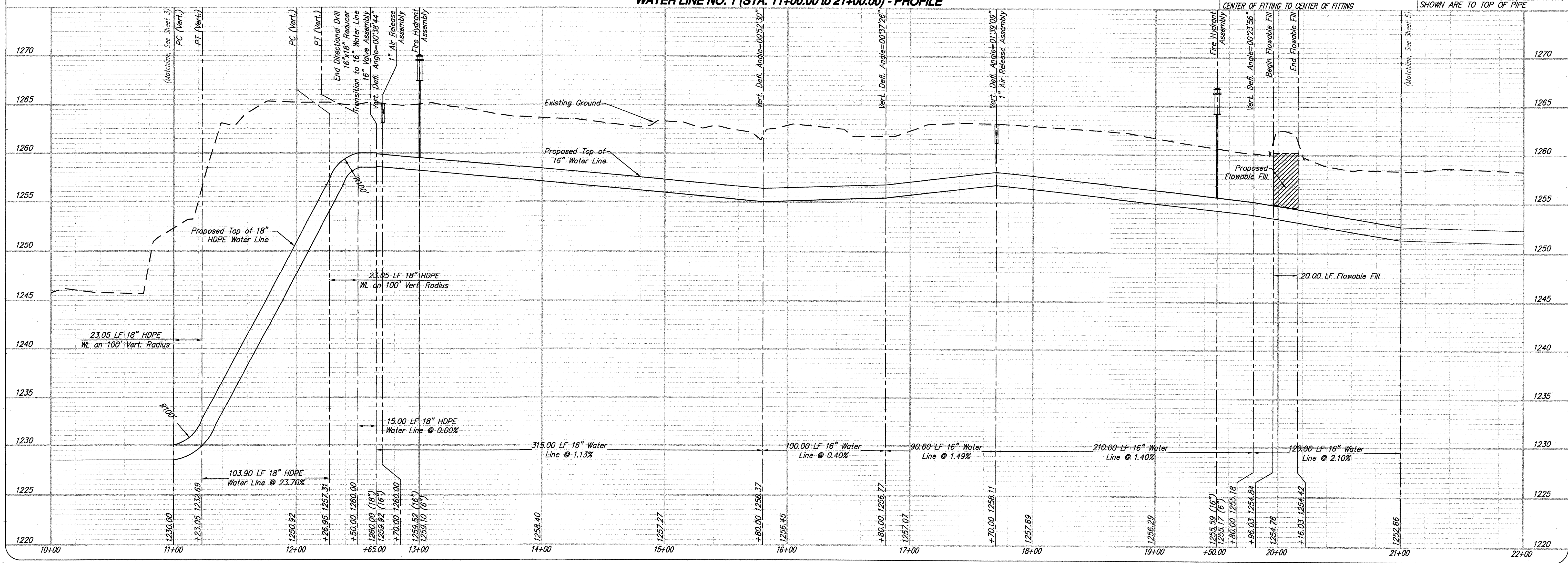
N. 1646844.480, E. 1659727.679
16" WL Line No. 1, Sta. 19+50.00
Install Fire Hydrant Assembly
L=19.00'
Fire hydrant pipe shall be ductile iron restrained joint.
Top of Valve Box El.=1260.70
Fire Hydrant Bury El.=1264.20
See detail sht. 10.

Remove and Reset existing 15" CMP, In Kind. Subsidiary to Site Restoration.



LEGEND:
 = Storm Water Sewer Line
 = Exist. Contour (1-ft. Intervals)

WATER LINE NO. 1 (STA. 11+00.00 to 21+00.00) - PROFILE



YOUNG & ASSOCIATES, P.A.
 Professional Civil Engineering Consultants
 100 S. George, Derby, KS 67037
 Tel: (316)788-2552 fax: (316)788-4408 email: engineering@yanga.com
Copyright 2014 by Young & Associates, P.A. All rights reserved. Prepared by the Underwriting Division of Y&A. This document, or parts thereof, or design concepts contained herein, are deemed confidential and proprietary information of Young & Associates, P.A. and may not be reproduced in any form without the specific written permission of Young & Associates, P.A. The delivery of this report or copies thereof does not constitute publication thereof.

16" WATER LINE NO. 1 - STA 11+00.00 to 21+00.00 PLAN & PROFILE
 63rd Street South 16" Water Main Extension
 City of Wichita
 Sedgwick County, Kansas

scale: as noted
 Design By: RWC
 Drawn By: DSB
 Checked By: CRY
 P/N: 13-348
 Prints Issued:
 Field Check, 2-14-14
 Office Check, 5-9-14
 Final Plans, 10-30-14
 Revisions: